

BERNAT® COZY CABLES BLANKET | KNIT



 KNIT | SKILL LEVEL: INTERMEDIATE

MEASUREMENTS

Approx 54" x 60" [137 x 152.5 cm].

GAUGE

8 sts and 13 rows = 4" [10 cm] in stocking stitch.

MATERIALS

Bernat® Blanket™ (10.5 oz/300 g; 220 yds/201 m) or (5.3 oz/150 g; 108 yds/98 m) Vintage White (10006) or (00006) **1065 yds/970 m or 5 (10) balls**

Size U.S. 11 (8 mm) circular knitting needle 36" [90 cm] long **or size needed to obtain gauge.** Cable needle.

ABBREVIATIONS:

Alt = Alternate(ing)

Approx = Approximate(ly)

Beg = Beginning

C12B = Slip next 6 stitches onto cable needle and leave at back of work. K6, then K6 from cable needle.

C12F = Slip next 6 stitches onto cable needle and leave at front of work. K6, then K6 from cable needle.

Cont = Continue(ity)

K = Knit

P = Purl

Pat = Pattern

Rep = Repeat

RS = Right side

St(s) = Stitch(es)

INSTRUCTIONS

Cable Panel (worked over 24 sts).

1st row: (RS). K12. C12F.

2nd and alt rows: P24.

3rd, 5th, 7th, 9th and 11th rows: K24.

13th row: C12B. K12.

15th, 17th, 19th, 21st and 23rd rows: K24.

24th row: P24.

Rep Rows 1-24 for Cable Panel.

BLANKET

Cast on 132 sts. Do **not** join. *Working back and forth across needle in rows*, proceed as follows:

1st row: (RS). K26. (P2. K24) 3 times. P2. K26.

2nd row: K2. (P24. K2) 5 times.

Rep last 2 rows 3 times more.

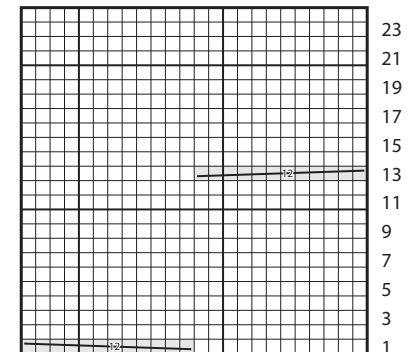
Next row: K2. (Work 1st row of Cable Panel. P2) 4 times. Work 1st row of Cable Panel. K2.

Next row: (K2. Work 2nd row of Cable Panel) 5 times. K2.



Cable Panel is now in position.

Cont in pat until Blanket from beg measures approx 60" [152.5 cm], ending on a 6th or 18th row of Cable Panel. Cast off in pat.

Cable Panel



Key

 = C12B
 = C12F