



KNIT | SKILL LEVEL: EASY

## ABBREVIATIONS

**Approx** = Approximately

**Beg** = Beginning

**Cont** = Continue(ity)

**K** = Knit

**K2tog** = Knit next 2 stitches together

**P** = Purl

**P2tog** = Purl next 2 stitches together

**Pat** = Pattern

**Rem** = Remaining

**Rep** = Repeat

**Rnd(s)** = Round(s)

**RS** = Right side

**St(s)** = Stitch(es)

**WS** = Wrong side

## MEASUREMENTS

**Scarf:** Approx 8" x 64" [20.5 x 162.5 cm]

**Hat:** One size to fit Adult.

## GAUGE

**Hat:** 18 sts and 24 rows = 4" [10 cm] with U.S. 8 (5 mm) knitting needles in stocking st

**Scarf:** 17 sts and 22 rows = 4" [10 cm] with U.S. 9 (5.5 mm) knitting needles in stocking st

## INSTRUCTIONS

### SCARF

With pair of U.S. 9 (5.5 mm) needles, cast on 42 sts.

**1st row:** (RS). K2. \*P2. K2. Rep from \* to end of row.

**2nd row:** K1. P1. \*K2. P2. Rep from \* to last 4 sts. K2. P1. K1.

Rep last 2 rows of (K2. P2) ribbing (with 1 st at each end in garter st) once more.

**Note:** See chart on page 2.

**\*\*1st row:** (RS). K1. \*K1. P1. K1. P5. Rep from \* to last st. K1.

**2nd row:** K1. \*K5. P1. K1. P1. Rep from \* to last st. K1.

**3rd row:** K1. \*K1. P1. K5. P1. Rep from \* to last st. K1.

**4th and 5th rows:** K1. \*K1. P5. K1. P1. Rep from \* to last st. K1.

**6th row:** As 3rd row.

## MATERIALS

**Red Heart® Heat Wave™** (3.5 oz/100 g; 198 yds/181 m)

Project	Hat	Scarf	Set	ball(s)
Luggage (0959)	1	2	3	

**Scarf:** Size U.S. 9 (5.5 mm) knitting needles.

**Hat:** Sizes U.S. 7 (4.5 mm) and U.S. 8 (5 mm) circular knitting needles 16" [40.5 cm] long. Set of 4 size U.S. 8 (5 mm) double-pointed knitting needles **or size needed to obtain gauge.** Stitch marker.

**7th row:** As 2nd row.

**8th row:** As 1st row.

**9th row:** K1. P4. K1. P1. K1. \*P5. K1. P1. K1. Rep from \* to last 2 sts. P1. K1.

**10th row:** K1. (K1. P1) twice. \*K5. P1. K1. P1. Rep from \* to last 5 sts. K5.

**11th row:** K4. P1. K1. P1. \*K5. P1. K1. P1. Rep from \* to last 3 sts. K3.

**12th and 13th rows:** K1. P2. K1. P1. K1. \*P5. K1. P1. K1. Rep from \* to last 4 sts. P3. K1.

**14th row:** As 11th row.

**15th row:** As 10th row.

**16th row:** As 9th row.

These 16 rows form pat.\*\*

Cont in pat until work from beg measures approx 63" [160 cm], ending on an 8th or 16th row of pat.

Work 4 rows of (K2. P2) ribbing with 1 st at each end in garter st as given above.

Cast off in pat.

## HAT

**Note:** Change to set of double-pointed needles for crown shaping.

With smaller circular needle, cast on 96 sts. Join in rnd. Place marker for beg of rnd.

**1st rnd:** (WS). \*K2. P2. Rep from \* around.

Rep last 2 rnd of (K2. P2) ribbing for 3" [7.5 cm].

Change to larger circular needle and proceed in pat as follows:

**1st and 2nd rnds:** \*K1. P1. K1. P5. Rep from \* around.

**3rd and 4th rnds:** \*K1. P1. K5. P1. Rep from \* around.

**5th and 6th rnds:** \*K1. P5. K1. P1. Rep from \* around.

**7th and 8th rnds:** \*K5. P1. K1. P1. Rep from \* around.

**9th and 10th rnds:** P4. K1. P1. K1. \*P5. K1. P1. K1. Rep from \* to last st. P1.

**11th and 12th rnds:** K3. P1. K1. P1. \*K5. P1. K1. P1. Rep from \* to last 2 sts. K2.

**13th and 14th rnds:** P2. K1. P1. K1. \*P5. K1. P1. K1. Rep from \* to last 3 sts. P3.

**15th and 16th rnds:** (K1. P1) twice. \*K5. P1. K1. P1. Rep from \* to last 4 sts. K4.

Rep last 16 rnds of pat once more.

**Shape crown: 1st rnd:** \*K1. P1. K1. P2tog. P3. Rep from \* around. 84 sts.

**2nd rnd:** \*K1. P1. K1. P4. Rep from \* around.

**3rd rnd:** \*K1. P1. K4. P1. Rep from \* around.

**4th rnd:** \*K1. P1. K2tog. K2. P1. Rep from \* around. 72 sts.

**5th rnd:** \*K1. P2tog. P1. K1. P1. Rep from \* around. 60 sts

**6th rnd:** \*K1. P2. K1. P1. Rep from \* around.

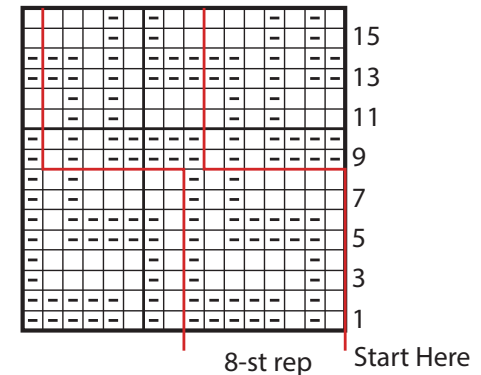
**7th rnd:** \*K1. P2tog. K1. P1. Rep from \* around. 48 sts.

**8th rnd:** \*K1. P1. Rep from \* around.

**9th rnd:** \*ssk. Rep from \* around. 24 sts.

Break yarn, leaving a long end. Thread end through rem sts. Pull tightly. Fasten securely.

## Chart



## Key

- = Knit on RS rows. Purl on WS rows.
- ◻ = Purl on RS rows. Knit on WS rows.