



MATERIALS

Patons® Classic Wool DK Superwash™ (1.75 oz/50 g; 125 yds/114 m)

To complete all 10 balls pictured:

Contrast A Red (12705) **2 balls**

Contrast B Aran (12008) **2 balls**

Note: 1 ball each of A and B will make approx 6 balls of any design.

Set of five size U.S. 4 (3.5 mm) double-pointed knitting needles **or size needed to obtain gauge.** Stitch marker. Stuffing. Ribbon.

ABBREVIATIONS: www.yarnspirations.com/abbreviations

Approx = Approximate(ly)

K = Knit

Kfb = Increase 1 stitch by knitting into front and back of next stitch

K2tog = Knit next 2 stitches together

M1 = Make 1 stitch by picking up horizontal loop lying before next stitch and knitting into back of loop

Rem = Remaining

Rep = Repeat

Rnd(s) = Round(s)

Ssk = Slip next 2 stitches knitwise one at a time. Pass them back onto left-hand needle, then knit through back loops together

St(s) = Stitch(es)

WS = Wrong side



INTERMEDIATE

MEASUREMENT

Approx 1 1/4" [11 cm] diameter.

GAUGE

24 sts and 30 rows = 4" [10 cm] in stocking st.

INSTRUCTIONS

Note: Make 10 balls in total.

Make 1 of each Chart design using A as Color 1 and B as Color 2.

Make 1 of each Chart design using B as Color 1 and A as Color 2.

Follow Charts on page 2 for color design placement, working in fair isle technique as follows: carry color not in use loosely across WS of work, but never over more than 5 sts. When it must pass over more than 5 sts, weave it over and under color in use at center point of sts it passes over. The colors are never twisted around one another.

Ball

With pair of double-pointed needles and color of choice, cast on 4 sts.

1st rnd: *Kfb. Rep from * around. 8 sts. Divide sts onto 4 needles. Join in rnd. Place marker at first st. Row 1 of Chart is now complete.

2nd rnd (Row 2 of Chart): K8.

3rd rnd (Row 3 of Chart): *Kfb. Rep from * around. 16 sts.

4th rnd (Row 4 of Chart): K16.

5th rnd (Row 5 of Chart): *K1. M1. K2. M1. K1. Rep from * around. 24 sts.

6th rnd (Row 6 of Chart): K24.

7th rnd (Row 7 of Chart): *K1. M1. K4. M1. K1. Rep from * around. 32 sts.

8th rnd (Row 8 of Chart): K32.

9th rnd (Row 9 of Chart): *K1. M1. K6. M1. K1. Rep from * around. 40 sts.

10th rnd (Row 10 of Chart): K40.

11th rnd (Row 11 of Chart): *K1. M1. K8. M1. K1. Rep from * around. 48 sts.

12th rnd (Row 12 of Chart): K48.

13th rnd (Row 13 of Chart): *K1. M1. K10. M1. K1. Rep from * around. 56 sts.

14th to 23rd rnds (Rows 14 to 23 of Chart): K56.

24th rnd (Row 24 of Chart): *K2tog. K10. ssk. Rep from * around. 48 sts.



25th rnd (Row 25 of Chart): K48.

26th rnd (Row 26 of Chart):

*K2tog, K8, ssk. Rep from * around.
40 sts.

27th rnd (Row 27 of Chart): K40.

28th rnd (Row 28 of Chart):

*K2tog, K6, ssk. Rep from * around.
32 sts.

29th rnd (Row 29 of Chart): K32.

30th rnd (Row 30 of Chart):

*K2tog, K4, ssk. Rep from * around.
24 sts.

31st rnd (Row 31 of Chart): K24.

Carefully block ball, leaving sts on needles and pinning to flat surface, covering with a damp cloth and leaving cloth to dry. Stuff ball, taking care to not overstuff.

32nd rnd (Row 32 of Chart):

*K2tog, K2, ssk. Rep from * around.
16 sts.

33rd rnd (Row 33 of Chart): K16.

34th rnd (Row 34 of Chart):

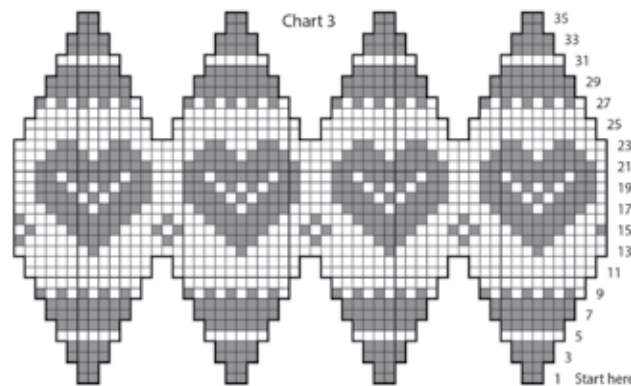
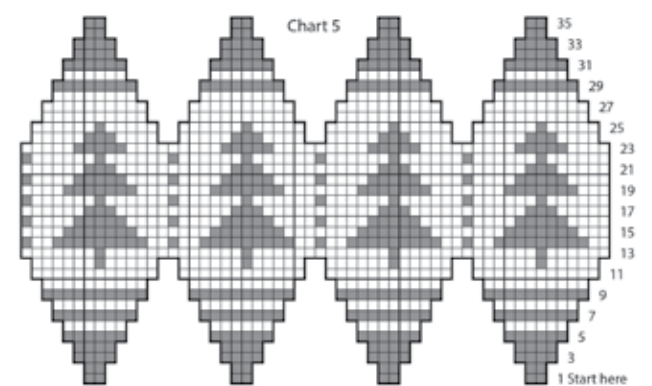
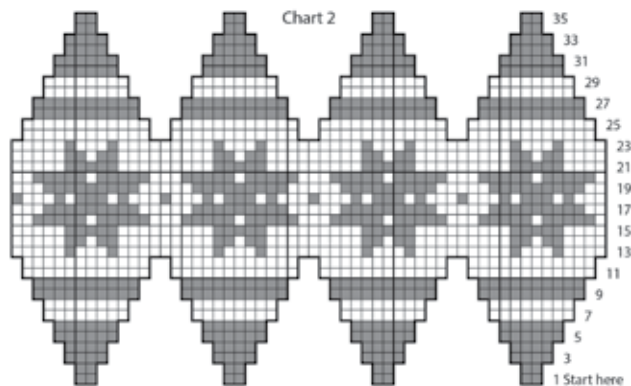
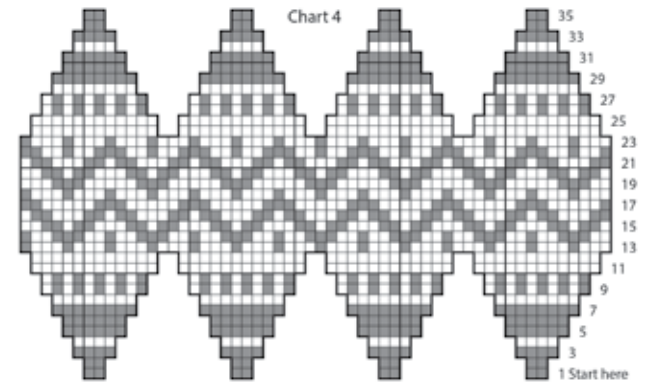
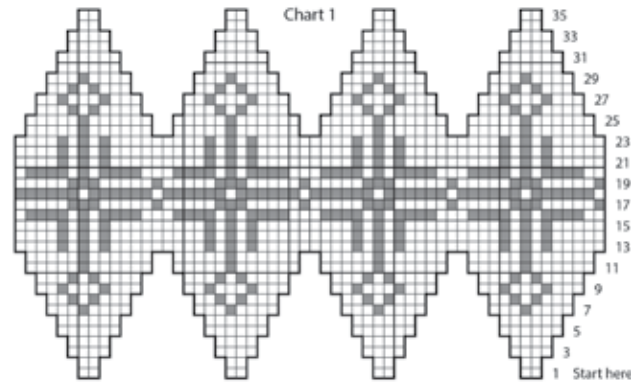
*K2tog, ssk. Rep from * around. 8 sts.

35th rnd (Row 35 of Chart): K8.

Break yarn, leaving a long end. Draw end tightly through rem sts and fasten securely.

FINISHING

Cut ribbon to desired length and tie at one end for hanging loop. Sew loop to top of ball.



Key
□ = Color 1
■ = Color 2