



MATERIALS

Lily® Sugar'n Cream® (2.5 oz/70.9 g; 120 yds/109 m)

Version I

Main Color (MC) Warm Brown (01130)

Contrast A Light Blue (00026)

2 balls (174 m/190 yds)

1 ball (64 m/70 yds)

Version II

Main Color (MC) Warm Brown (01130)

Contrast A Rose Pink (00046)

2 balls (174 m/190 yds)

1 ball (64 m/70 yds)

Size 4 mm (U.S. G/6) crochet hook **or size needed to obtain gauge.**
8 purchased pompoms.

ABBREVIATIONS:

Approx = Approximately
Ch = Chain(s)
Cont = Continue(ity)
Dc = Double crochet

Rem = Remaining
Rep = Repeat
Rnd(s) = Round(s)
RS = Right side

Sc = Single crochet
Sl st = Slip stitch
St(s) = Stitch(es)
WS = Wrong side

CROCHET | SKILL LEVEL: INTERMEDIATE

MEASUREMENTS

Approx 23" [58.5 cm] around x 6½"
[16.5 cm] high, excluding handle.

GAUGE

15 sc and 16 rows = 4" [10 cm].

INSTRUCTIONS

Note: Basket is worked in rnds, but work is turned at end of each rnd so color-work design will not shift to the left.

When working from chart and joining colors, work to last 2 loops on hook of first color. Draw new color through last 2 loops and proceed. Carry color when not in use loosely across top of previous row and work sts around it to avoid stranding.

BASKET

With MC, ch 2.

1st rnd: 8 sc in 2nd ch from hook. Join with sl st to first sc.

2nd rnd: Ch 1. 2 sc in each sc around. Join with sl st to first sc.

Turn. 16 sc.

3rd rnd: Ch 1. (1 sc in next sc. 2 sc in next sc) 8 times. Join with sl st to first sc. **Turn.** 24 sc.

4th rnd: Ch 1. 1 sc in next sc. (2 sc in next sc. 1 sc in each of next 2 sc) 7 times. 2 sc in next sc. 1 sc in next sc. Join with sl st to first sc. **Turn.** 32 sc.

5th rnd: Ch 1. (1 sc in each of next 3 sc. 2 sc in next sc) 8 times. Join with sl st to first sc. **Turn.** 40 sc.

6th rnd: Ch 1. 1 sc in each of next 2 sc. (2 sc in next sc. 1 sc in each of next 4 sc) 7 times. 2 sc in next sc. 1 sc in each of next 2 sc. Join with sl st to first sc. **Turn.** 48 sc.

7th rnd: Ch 1. (1 sc in each of next 5 sc. 2 sc in next sc) 8 times. Join with sl st to first sc. **Turn.** 56 sc.

8th rnd: Ch 1. 1 sc in each of next 3 sc. (2 sc in next sc. 1 sc in each of next 6 sc) 7 times. 2 sc in next sc. 1 sc in each of next 3 sc. Join with sl st to first sc. **Turn.** 64 sc.

9th rnd: Ch 1. (1 sc in each of next 7 sc. 2 sc in next sc) 8 times. Join with sl st to first sc. **Turn.** 72 sc.

10th rnd: Ch 1. 1 sc in each of next 4 sc. (2 sc in next sc. 1 sc in each of



next 8 sc) 7 times. 2 sc in next sc.
1 sc in each of next 4 sc. Join with
sl st to first sc. **Turn.** 80 sc.

11th rnd: Ch 1. (1 sc in each of next
9 sc. 2 sc in next sc) 8 times. Join
with sl st to first sc. **Turn.** 88 sc.

12th rnd: Ch 1. *Working in back
loops only*, 1 sc in each sc around.
Join with sl st to first sc. **Turn.**

13th rnd: Ch 1. *Working in both
loops*, 1 sc in each sc around. Join
with sl st to first sc. **Turn.**

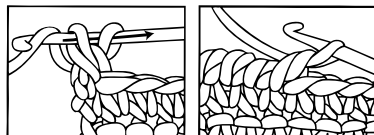
14th rnd: Ch 1. Work 1st row of
Chart, *reading rows from right to
left*, noting 11-st rep will be worked
8 times. Join with sl st to first sc.
Turn.

Keeping cont of Chart, cont as
established until all 20 rows of
Chart are complete. Break A.

Next 2 rnds: With MC, ch 1. 1 sc in
each sc around. Join with sl st to first
sc. **Turn.**

Next rnd: Ch 1. *Working from left
to right, instead of right to left as
usual*, work 1 reverse sc in each sc
around. Join with sl st to first st.
Fasten off.

REVERSE Sc Diagram



HANDLE

With MC, ch 47.

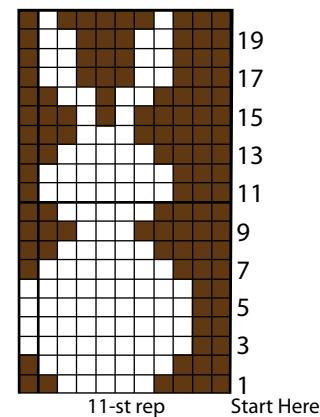
1st rnd: 1 dc in 4th ch from hook.
1 dc in each ch to end of chain.
*Working into rem loops along
opposite side of ch*, work 1 dc in
each ch to end of chain. Ch 1. **Do
not** fasten off.

Fold Handle in half lengthwise
with RS facing each other (WS of
last rnd will show). Join Handle
by working 1 sl st through tops of
corresponding dc and foundation
ch to end of row. Fasten off.

FINISHING

Sew Handle to Basket as shown in
picture. Sew 1 pompom to each
Bunny for tail as shown in picture.

Chart



Key

- = Main Color (MC)
- = Contrast A