

Version 1



Version 2



KNIT | SKILL LEVEL: INTERMEDIATE

## ABBREVIATIONS

**Alt** = Alternate  
**Beg** = Beginning  
**Cont** = Continue  
**Inc** = Inceas(e)(ing)  
**K** = Knit  
**K2tog** = Knit next 2 stitches together

**P** = Purl  
**Rep** = Repeat  
**Rnd(s)** = Round(s)  
**St(s)** = Stitch(es)  
**WS** = Wrong side

## MATERIALS

**Bernat® Premium™** (7 oz/198 g; 360 yds/329 m)

Sizes	2	4	6	
<b>Version 1</b>				
<b>Main Color (MC)</b> Magenta (58526)	2	3	4	<b>balls</b>
<b>Contrast A</b> Aran (58500)	1	1	1	<b>ball</b>
<b>Contrast B</b> Navy (58522)	1	1	1	<b>ball</b>
<b>Contrast C</b> Teal (58517)	1	1	1	<b>ball</b>
<b>Version 2</b>				
<b>Main Color (MC)</b> Navy (58522)	2	3	4	<b>balls</b>
<b>Contrast A</b> Aran (58500)	1	1	1	<b>ball</b>
<b>Contrast B</b> Botany Teal (58538)	1	1	1	<b>ball</b>
<b>Contrast C</b> Med Grey Heather (58505)	1	1	1	<b>ball</b>

Sizes U.S. 7 (4.5 mm) and U.S. 8 (5 mm) circular knitting needles 29" [75 cm] long. Set of 4 sizes U.S. 7 (4.5 mm) and U.S. 8 (5 mm) double-pointed knitting needles **or size needed to obtain gauge.** Stitch marker. 4 st holders. Tapestry needle.

## SIZES

### To fit chest measurement

2	22" [56 cm]
4	24" [61 cm]
6	26" [66 cm]

### Finished chest

2	24½" [62 cm]
4	26½" [67.5 cm]
6	28½" [72.5 cm]

## GAUGE

18 sts and 24 rows = 4" [10 cm] in stocking st with larger needles.

## INSTRUCTIONS

*The instructions are written for smallest size. If changes are necessary for larger sizes the instructions will be written thus ( ). Numbers for each size are shown in the same color throughout the pattern. When only one number is given in black, it applies to all sizes.*

### Notes:

- Sweater is worked in round in one piece on circular needle from the bottom up.
- Sleeves are worked on double-pointed needles, then joined to Body for Yoke.

## BODY

With MC and smaller circular needle, cast on **112 (120-128)** sts. Join in rnd, placing a marker on first st. Proceed in (K1. P1) ribbing for **1½ (2-2)" [4 (5-5) cm]**.

Change to larger circular needle and knit in rnds until work from beg measures **8 (10-11½)" [20.5 (25.5-29) cm]**.

**Next rnd:** With MC, K2. Slip these 2 sts and last 2 sts from previous rnd onto a st holder. **K56 (60-64)**. Slip last 4 sts onto a st holder. Knit to end of rnd. Leave these sts on a st holder.

## SLEEVES

With MC and set of smaller double-pointed needles, cast on **32 (36-36)** sts. Divide sts onto 3 needles. Join in rnd, placing a marker on first st. Proceed in (K1. P1) ribbing for **1½ (2-2)" [4 (5-5) cm]**.

Change to set of larger double-pointed needles and knit 4 rnds. Inc 1 st at each end of next and every following 8th rnd until there are **40 (42-46)** sts.

Cont even until work from beg measures **8½ (10-11½)" [21.5 (25.5-29) cm]**.

**Next rnd:** K2. Slip these 2 sts and last 2 sts onto a safety pin for armhole. Break yarn leaving an end 12" [30.5 cm] long for grafting at underarm. Leave **36 (38-42)** sts on a spare needle.

## YOKE

**Note:** When working from chart, carry yarn not in use loosely across WS of work but never over more than 5 sts. When it must pass over more than 5 sts, weave it over and under color in use on next st or at center point of sts it passes over. The colors are never twisted around one another.

**Next rnd:** \*With MC, K**36 (38-42)** of Sleeve. **K52 (56-60)** of Body. Rep from \* once more. **176 (188-204)** sts. Mark last st as end of rnd.

**Sizes 4 and 6 only:** Knit **(2-4)** rnds even.

**All sizes: Next rnd:** With MC, \*K2tog. **K20 (21-15)**. Rep from \* to last **0 (4-0)** sts. **K0 (4-0)**. **168 (180-192)** sts.

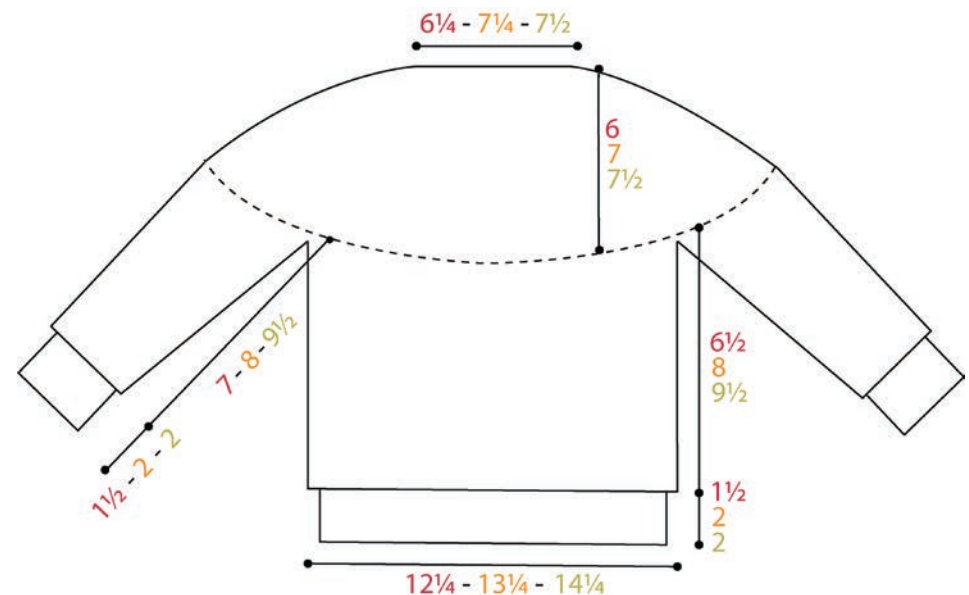
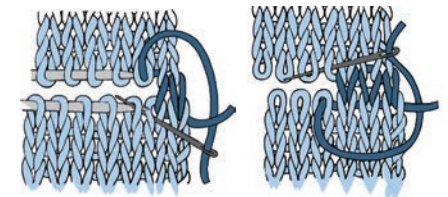
Work Chart to end of chart, reading rows from **right to left** and noting 12-st rep will be worked **14 (15-16)** times. Chart is shown on page 3. **56 (60-64)** sts.

**Note:** Change to set of larger double-pointed needles as necessary.

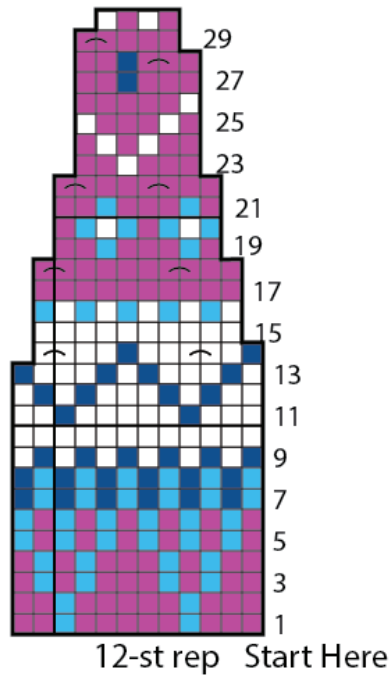
**Next 2 rnds:** With MC, knit.

**Collar:** With set of smaller double-pointed needles proceed in (K1. P1) ribbing until Collar measures 3½" [11.5 cm]. Cast off loosely in ribbing. Fold Collar in half to WS and sew cast off edge in position. Graft underarms.

## Grafting



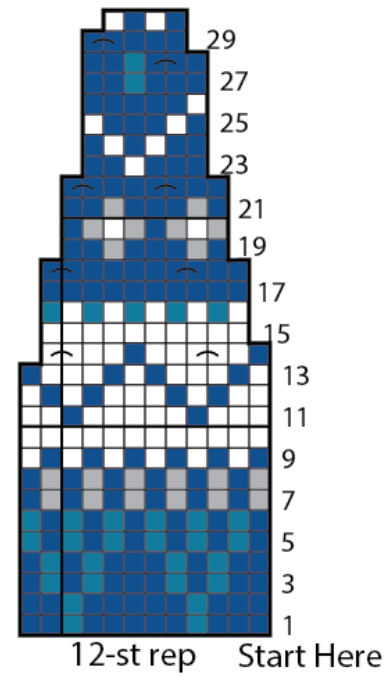
Version 1 - Chart



Key - Version 1

- = Main Color (MC)
- = Contrast A
- = Contrast B
- = Contrast C
- ↖ = K2tog

Version 2 - Chart



Key - Version 2

- = Main Color (MC)
- = Contrast A
- = Contrast B
- = Contrast C
- ↖ = K2tog