



CROCHET | SKILL LEVEL: INTERMEDIATE

## ABBREVIATIONS

**Approx** = Approximately

**Beg** = Begin(ning)

**Ch** = Chain(s)

**Cont** = Continue(ity)

**Hdc** = Half double crochet

**Hdcbp** = Yoh and draw up a loop around post of next stitch at back of work, inserting hook from right to left. Yoh and draw through 3 loops on hook.

**Hdcfp** = Yoh and draw up a loop around post of next stitch at front of work, inserting hook from right to left. Yoh and draw through 3 loops on hook.

**Hdcbp2tog** = (Yoh and draw up a loop around post of next stitch at back of work, inserting hook from right to left) twice. Yoh and draw through all loops on hook.

**Hdcfp2tog** = (Yoh and draw up a loop around post of next stitch at front of work, inserting hook from right to left) twice. Yoh and draw through all loops on hook.

**Hdc5tog** = (Yoh and draw up a loop) in each of next 5 stitches. Yoh and draw through all loops on hook.

**Popcorn** = Work 4 hdc into next stitch. Drop loop from hook. Insert hook from front to back into first hdc of 4 hdc group. Pull dropped loop through st. Ch 1 to secure popcorn.

**PM** = Place marker

**Rep** = Repeat

**Rnd(s)** = Round(s)

**Sc** = Single crochet

**Sl st** = Slip stitch

**Sp(s)** = Space(s)

**St(s)** = Stitch(es)

**Tr** = Treble crochet

**Trfp** = (Yoh) twice and draw up a loop around post of next stitch at front of work, inserting hook from right to left. (Yoh and draw through 2 loops on hook) 3 times.

**WS** = Wrong side

**Yoh** = Yarn over hook

## MATERIALS

**Lily® Sugar'n Cream®** (2.5 oz/70.9 g; 120 yds/109 m)

Stonewash (01118)

**5 balls or 600 yds/545 m**

Size U.S. H/8 (5 mm) crochet hook **or size needed to obtain gauge.**  
Locking stitch markers. Yarn needle.

## MEASUREMENTS

Approx 14" [35.5 cm] wide x  
4" [10 cm] deep x 17" [43 cm] tall.

## GAUGE

13 sc and 14 rows = 4" [10 cm].



## INSTRUCTIONS

### BOTTOM

Ch 15.

**1st row:** 1 sc in 2nd ch from hook. 1 sc in each ch to end of chain. Turn. 14 sc.

**2nd row:** Ch 1. 1 sc in each sc to end of row. Turn.

Rep 2nd row until work from beg measures 14" [35.5 cm]. PM on 7th st of last row. Fasten off.

### SIDES

**Notes:** Join all rnds with sl st to first st.

Turn at end of each rnd to alternate working around RS and WS.

With **WS** facing, join yarn with sl st to marked stitch. Remove marker. See diagram on page 5.

**1st rnd:** (WS). Ch 1. 1 sc in same st as sl st. 1 sc in each of next 6 sc. Work 49 sts along long edge of Bottom. Work 14 sts along short end of Bottom. Cont down long edge, working (19 sc. 5 hdc in each of next 2 sps. 7 sc. 5 hdc in each of next 2 sps. 19 sc) evenly along Bottom. 1 sc in each of next 7 sc. 142 sts. Join. **Turn.**

**2nd rnd:** (RS). Ch 1. 1 sc in each of first 16 sc. 1 hdcbp around each of next 3 sts. 1 hdcfp around next st. PM on post of st just worked. 1 hdcbp around each of next 6 sts. Hdcfp2tog. 1 hdcfp around each of next 6 sts. Hdcfp2tog. 1 hdcbp around each of next 3 sts. 1 hdcfp around next st. 1 hdcbp around each of next 3 sts. Hdcfp2tog. 1 hdcfp around each of next 6 sts. Hdcfp2tog. 1 hdcbp around each of next 6 sts. 1 hdcfp around next st. PM on post of st just worked. 1 hdcbp around each of next 3 sts. 1 sc in each sc to end of rnd. Join. **Turn.**

**3rd rnd:** Ch 1. 1 sc in each of first 79 sc. 1 hdcfp around each of next 3 hdc. 1 hdcbp around next hdc. 1 hdcfp around each of next 6 hdc. Hdcbp2tog. 1 hdcbp around each of next 4 hdc. Hdcbp2tog. 1 hdcfp around each of next 3 hdc. 1 hdcbp around next hdc. 1 hdcfp around each of next 3 hdc. Hdcbp2tog. 1 hdcbp around each of next 4 hdc. Hdcbp2tog. 1 hdcfp around each of next 6 hdc. 1 hdcbp around next hdc. 1 hdcfp around each of next 3 hdc. 1 sc in each sc to end of rnd. Join. **Turn.**

**4th rnd:** Ch 1. 1 sc in each of first 16 sc. 1 hdcbp around next hdc. 1 trfp around marked hdc 2 rows below. Skip next hdc. \*1 hdcbp around next hdc. 1 hdcfp around next hdc. 1 hdcbp around next hdc. 1 trfp around marked hdc 2 rows below. Remove marker.\* 1 hdcbp around each of next 4 hdc. Hdcfp2tog. 1 hdcfp around each of next 2 hdc. Hdcfp2tog. 1 hdcbp around each of next 3 hdc. 1 hdcfp around next hdc. 1 hdcbp around each of next 3 hdc. Hdcfp2tog. 1 hdcfp around each of next 2 hdc. Hdcfp2tog. 1 hdcbp around each of next 4 hdc. 1 trfp around marked hdc 2 rows below. Remove marker. Skip next hdc. Rep from \* to \* once more. Skip next hdc. 1 hdcbp around next hdc. 1 sc in each sc to end of rnd. Join. **Turn.**

**5th rnd:** Ch 1. 1 sc in each of first 79 sc. 1 hdcfp around next hdc. Popcorn in next tr. 1 hdcfp around next hdc. 1 hdcbp around next hdc. 1 hdcfp around next hdc. Popcorn in next tr. 1 hdcfp around each of next 4 hdc. Hdcbp2tog twice. 1 hdcfp around each of next 3 hdc. 1 hdcbp around next hdc. 1 hdcfp around each of next 3 hdc. Hdcbp2tog twice. 1 hdcfp around

each of next 4 hdc. Popcorn in next hdc. 1 hdcfp round next hdc. 1 hdcbp around next hdc. 1 hdcfp around next hdc. Popcorn in next hdc. 1 hdcfp around next hdc. 1 sc in each sc to end of rnd. Join. **Turn.**

**6th rnd:** Ch 1. 1 sc in each of first 16 sc. 1 hdcbp around each of next 3 sts. 1 hdcfp around next st. PM on post of st just worked. 1 hdcbp around each of next 6 sts. Hdcfp2tog. 1 hdcbp around each of next 3 hdc. (1 hdcfp. Ch 1. 1 hdcfp) all around next hdc. 1 hdcbp around each of next 3 hdc. Hdcfp2tog. 1 hdcbp around each of next 6 sts. 1 hdcfp around next st. PM on post of st just worked. 1 hdcbp around each of next 3 sts. 1 sc in each sc to end of rnd. Join. **Turn.**

**7th rnd:** Ch 1. 1 sc in each of first 79 sc. 1 hdcfp around each of next 3 hdc. 1 hdcbp around next hdc. 1 hdcfp around each of next 6 hdc. 1 hdcbp around next hdc. 1 hdcfp around each of next 3 hdc. 1 hdcbp around next hdc. (1 hdc. Ch 1. 1 hdc) all in next ch-1 sp. 1 hdcbp around next hdc. 1 hdcfp around each of next 3 hdc. 1 hdcbp around next hdc. 1 hdcfp around each of next 6 hdc. 1 hdcbp around next



hdc. 1 hdcfp around each of next 3 hdc. 1 sc in each sc to end of rnd. Join. **Turn.**

**8th rnd:** Ch 1. 1 sc in each of first 16 sc. 1 hdcbp around next hdc. \*1 trfp around marked hdc 2 rows below. Remove marker. Skip next hdc. 1 hdcbp around next hdc. 1 hdcfp around next hdc. 1 hdcbp around next hdc. 1 trfp around marked hdc 2 rows below. Remove marker.\* 1 hdcbp around each of next 4 hdc. 1 hdcfp around next hdc. 1 hdcbp around each of next 3 hdc. 1 hdcfp around each of next 2 hdc. (1 hdc. Ch 1. 1 hdc) all in next ch-1 sp. 1 hdcfp around each of next 2 hdc. 1 hdcbp around each of next 3 hdc. 1 hdcfp around next hdc. 1 hdcbp around each of next 4 hdc. Rep from \* to \* once more. Skip next hdc. 1 hdcbp around next hdc. 1 sc in each sc to end of rnd. Join. **Turn.**

**9th rnd:** Ch 1. 1 sc in each of first 79 sc. 1 hdcfp around next hdc. Popcorn in next tr. 1 hdcfp around next hdc. 1 hdcbp around next hdc. 1 hdcfp around next hdc. Popcorn in next tr. 1 hdcfp around each of next 4 hdc. 1 hdcbp around next hdc. 1 hdcfp around each of next 3 hdc. 1 hdcbp around each of next

3 hdc. (1 hdc. Ch 1. 1 hdc) all in next ch-1 sp. 1 hdcbp around each of next 3 hdc. 1 hdcfp around each of next 3 hdc. 1 hdcbp around next hdc. 1 hdcfp around each of next 4 hdc. Popcorn in next hdc. 1 hdcfp around next hdc. 1 hdcbp around next hdc. 1 hdcfp around next hdc. Popcorn in next hdc. 1 hdcfp around next hdc. 1 sc in each sc to end of rnd. Join. **Turn.**

**10th rnd:** Ch 1. 1 sc in each of first 16 sc. 1 hdcbp around each of next 3 sts. 1 hdcfp around next st. PM on post of st just worked. 1 hdcbp around each of next 6 sts. 1 hdcfp around next hdc. 1 hdcbp around each of next 3 hdc. 1 hdcfp around each of next 4 hdc. (1 hdc. Ch 1. 1 hdc) all in next ch-1 sp. 1 hdcfp around each of next 4 hdc. 1 hdcbp around each of next 3 hdc. 1 hdcfp around next hdc. 1 hdcbp around each of next 6 sts. 1 hdcfp around next st. PM on post of st just worked. 1 hdcbp around each of next 3 sts. 1 sc in each sc to end of rnd. Join. **Turn.**

**11th rnd:** Ch 1. 1 sc in each of first 79 sc. 1 hdcfp around each of next 3 hdc. 1 hdcbp around next hdc. 1 hdcfp around each of next 6 hdc. 1 hdcbp around next hdc. 1 hdcfp

around each of next 3 hdc. 1 hdcbp around each of next 5 hdc. Skip next ch-1. 1 hdcbp around each of next 5 hdc. 1 hdcfp around each of next 3 hdc. 1 hdcbp around next hdc. 1 hdcfp around each of next 6 hdc. 1 hdcbp around next hdc. 1 hdcfp around each of next 3 hdc. 1 sc in each sc to end of rnd. Join. **Turn.**

**12th rnd:** Ch 1. 1 sc in each of first 16 sc. 1 hdcbp around next hdc. \*1 trfp around marked hdc 2 rows below. Remove marker. Skip next hdc. 1 hdcbp around next hdc. 1 hdcfp around next hdc. 1 hdcbp around next hdc. 1 trfp around marked hdc 2 rows below. Remove marker.\* 1 hdcbp around each of next 4 hdc. 1 hdcfp around next hdc. 1 hdcbp around each of next 3 hdc. Hdcbp2tog. 1 hdcfp around each of next 6 hdc. Hdcbp2tog. 1 hdcbp around each of next 3 hdc. 1 hdcfp around next hdc. 1 hdcbp around each of next 4 hdc. Rep from \* to \* once. Skip next hdc. 1 hdcbp around next hdc. 1 sc in each sc to end of rnd. Join. **Turn.**

**13th rnd:** Ch 1. 1 sc in each of first 79 sc. 1 hdcfp around next hdc. Popcorn in next tr. 1 hdcfp around next hdc. 1 hdcbp around next hdc.

1 hdcfp around next hdc. Popcorn in next tr. 1 hdcfp around each of next 4 hdc. 1 hdcbp around next hdc. 1 hdcfp around each of next 3 hdc. Hdcbp2tog. 1 hdcbp around each of next 4 hdc. Hdcbp2tog. 1 hdcfp around each of next 3 hdc. 1 hdcbp around next hdc. 1 hdcfp around each of next 4 hdc. Popcorn in next hdc. 1 hdcfp around next hdc. 1 hdcbp around next hdc. 1 hdcfp around next hdc. Popcorn in next hdc. 1 hdcfp around next hdc. 1 sc in each sc to end of rnd. Join. **Turn.**

**14th rnd:** Ch 1. 1 sc in each of first 16 sc. 1 hdcbp around each of next 3 sts. 1 hdcfp around next st. PM on post of st just worked. 1 hdcbp around each of next 6 sts. 1 hdcfp around next hdc. 1 hdcbp around each of next 3 hdc. Hdcbp2tog. 1 hdcfp around each of next 2 hdc. Hdcbp2tog. 1 hdcbp around each of next 3 sts. 1 hdcfp around next st. 1 hdcbp around each of next 6 sts. 1 hdcfp around next st. PM on post of st just worked. 1 hdcbp around each of next 3 sts. 1 sc in each sc to end of rnd. Join. **Turn.**

**15th rnd:** Ch 1. 1 sc in each of first 79 sc. 1 hdcfp around each of next 3 hdc. 1 hdcbp around next





hdc. 1 hdcfp around each of next 6 hdc. 1 hdcbp around next hdc. 1 hdcfp around each of next 3 hdc. Hdcbp2tog twice. 1 hdcfp around each of next 3 hdc. 1 hdcbp around next hdc. 1 hdcfp around each of next 6 hdc. 1 hdcbp around next hdc. 1 hdcfp around each of next 3 hdc. 1 sc in each sc to end of rnd. Join. **Turn.**

**16th rnd:** Ch 1. 1 sc in each of first 16 sc. 1 hdcbp around next hdc. \*1 trfp around marked hdc 2 rows below. Remove marker. Skip next hdc. 1 hdcbp around next hdc. 1 hdcfp around next hdc. 1 hdcbp around next hdc. 1 trfp around marked hdc 2 rows below. Remove marker.\* 1 hdcbp around each of next 4 hdc. (1 hdcfp. Ch 1. 1 hdcfp) all around next hdc. 1 hdcbp around each of next 3 hdc. Hdcfp2tog. 1 hdcbp around each of next 3 hdc. (1 hdcfp. Ch 1. 1 hdcfp) all around next hdc. 1 hdcbp around each of next 4 hdc. Rep from \* to \* once more. Skip next hdc. 1 hdcbp around next hdc. 1 sc in each sc to end of rnd. Join. **Turn.**

**17th rnd:** Ch 1. 1 sc in each of first 79 sc. 1 hdcfp around next hdc. Popcorn in next tr. 1 hdcfp around next hdc. 1 hdcbp around next hdc.

1 hdcfp around next hdc. Popcorn in next tr. 1 hdcfp around each of next 4 hdc. 1hdcbp around next hdc. (1 hdc. Ch 1. 1 hdc) all in next ch-1 sp. 1hdcbp around next hdc. 1 hdcfp around each of next 3 hdc. 1 hdcbp around next hdc. 1 hdcfp around each of next 3 hdc. 1hdcbp around next hdc. (1 hdc. Ch 1. 1 hdc) all in next ch-1 sp. 1hdcbp around next hdc. 1 hdcfp around each of next 4 hdc. Popcorn in next hdc. 1 hdcfp round next hdc. 1 hdcbp around next hdc. 1 hdcfp around next hdc. Popcorn in next hdc. 1 hdcfp around next hdc. 1 sc in each sc to end of rnd. Join. **Turn.**

**18th rnd:** Ch 1. 1 sc in each of first 16 sc. 1 hdcbp around each of next 3 sts. 1 hdcfp around next st. PM on post of st just worked. 1 hdcbp around each of next 6 sts. 1 hdcfp around each of next 2 hdc. (1 hdc. Ch 1. 1 hdc) all in next ch-1 sp. 1 hdcfp around each of next 2 hdc. 1 hdcbp around each of next 3 hdc. 1 hdcfp around next hdc. 1 hdcbp around each of next 3 hdc. 1 hdcfp around each of next 2 hdc. (1 hdc. Ch 1. 1 hdc) all in next ch-1 sp. 1 hdcfp around each of next 2 hdc. 1 hdcbp around each of next 6 sts. 1 hdcfp around next st. PM on post

of st just worked. 1 hdcbp around each of next 3 sts. 1 sc in each sc to end of rnd. Join. **Turn.**

**19th rnd:** Ch 1. 1 sc in each of first 79 sc. 1 hdcfp around each of next 3 hdc. 1 hdcbp around next hdc. 1 hdcfp around each of next 6 hdc. 1 hdcbp around each of next 3 hdc. (1 hdc. Ch 1. 1 hdc) all in next ch-1 sp. 1 hdcbp around each of next 3 hdc. 1 hdcfp around each of next 3 hdc. 1 hdcbp around next hdc. 1 hdcfp around each of next 3 hdc. 1 hdcbp around each of next 3 hdc. (1 hdc. Ch 1. 1 hdc) all in next ch-1 sp. 1 hdcbp around each of next 3 hdc. 1 hdcfp around each of next 3 hdc. 1 hdcbp around next hdc. 1 hdcfp around each of next 3 hdc. 1 sc in each sc to end of rnd. Join. **Turn.**

**20th rnd:** Ch 1. 1 sc in each of first 16 sc. 1 hdcbp around next hdc. \*1 trfp around marked hdc 2 rows below. Remove marker. Skip next hdc. 1 hdcbp around next hdc. 1 hdcfp around next hdc. 1 hdcbp around next hdc. 1 trfp around marked hdc 2 rows below. Remove marker.\* 1 hdcbp around each of next 4 hdc. 1 hdcfp around each of next 4 hdc. (1 hdc. Ch 1. 1 hdc) all in next ch-1 sp. 1 hdcfp around

each of next 4 hdc. 1 hdcbp around each of next 3 hdc. 1 hdcfp around next hdc. 1 hdcbp around each of next 3 sts. 1 hdcfp around each of next 4 hdc. (1 hdc. Ch 1. 1 hdc) all in next ch-1 sp. 1 hdcfp around each of next 4 hdc. 1 hdcbp around each of next 4 hdc. Rep from \* to \* once more. Skip next hdc. 1 hdcbp around next hdc. 1 sc in each sc to end of rnd. Join. **Turn.**

**21st rnd:** Ch 1. 1 sc in each of first 79 sc. 1 hdcfp around next hdc. Popcorn in next tr. 1 hdcfp around next hdc. 1 hdcbp around next hdc. 1 hdcfp around next hdc. Popcorn in next tr. 1 hdcfp around each of next 4 hdc. 1 hdcbp around each of next 5 hdc. Skip next ch-1 sp. 1 hdcbp around each of next 5 hdc. 1 hdcfp around each of next 3 hdc. 1 hdcbp around next hdc. 1 hdcfp around each of next 3 hdc. 1 hdcbp around each of next 3 hdc. 1 hdcfp around each of next 5 hdc. Skip next ch-1 sp. 1 hdcbp around each of next 5 hdc. 1 hdcfp around each of next 4 hdc. Popcorn in next hdc. 1 hdcfp around next hdc. 1 hdcbp around next hdc. 1 hdcfp around next hdc. 1 sc in each sc to end of rnd. Join. **Turn.** Rep 2nd to 21st rnds once more.



**Next rnd:** Ch 1. 1 sc in each of first 26 sts. (Hdc5tog) twice. 1 sc in each of next 7 sts. (Hdc5tog) twice. 1 sc in each sc to end of rnd. 126 sts. Join.

**Turn.**

**Next 8 rnds:** Ch 1. 1 sc in each st around. Join. **Turn at end of each rnd.**

**Next rnd (handle openings):** Ch 1. 1 sc in each of first 22 sc. Ch 19. Skip next 19 sc. 1 sc in each of next 44 sc. Ch 19. Skip next 19 sc. 1 sc in each sc to end of rnd. Join. **Turn.**

**Next 9 rnds:** Ch 1. 1 sc in each st around. Join. **Turn at end of each rnd.**

Fasten off.

**STRAP** (worked lengthwise)

Ch 91.

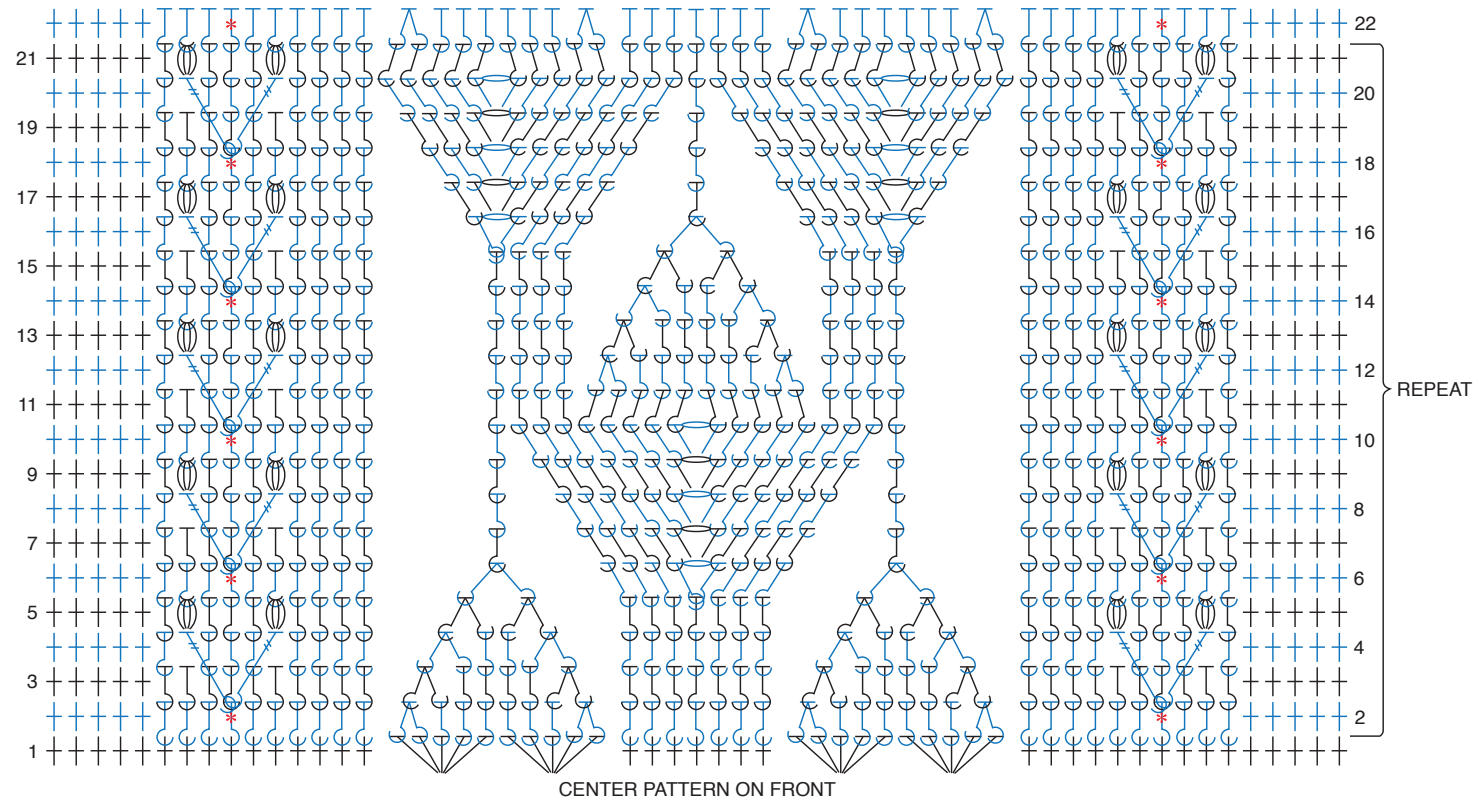
**1st row:** 1 sc in 2nd ch from hook. 1 sc in each ch to end of chain. Turn. 90 sc.

**2nd row:** Ch 1. 1 sc in each sc to end of row. Turn.

Rep 2nd row until Strap measures 1½" [4 cm].

Fasten off.

Sew ends of Strap in position as shown in photo.



### STITCH KEY

- = chain (ch)
- = single crochet (sc)
- = half double crochet (hdc)
- = front post half double crochet (hdcfp)
- = back post half double crochet (hdcbp)
- = front post treble crochet (trfp)
- = front post half double crochet 2 together (hdcfp2tog)
- = back post half double crochet 2 together (hdcbp2tog)
- = popcorn
- = marker

