



KNIT
SKILL LEVEL
INTERMEDIATE



Designed by Lisa Gentry

What you will need:

RED HEART® Dreamy™: 2 balls 8372 Rose

Susan Bates® Circular Knitting Needle: 6mm [US 10] 32" [80 cm] circular needle.

Stitch markers, yarn needle

GAUGE: 15 sts = 4" [10 cm]; 18 rows = 4" [10cm] in Stockinette stitch (knit on right side, purl on wrong side). **CHECK YOUR GAUGE.** Use any size needles to obtain the gauge.



RED HEART® Dreamy™, Art E861 available in 8.8 oz (250 g), 466 yd (426 m) balls

Warming Hearts Sofa Shawl

Let someone know you care with a shawl that is an expression of your love. This beautiful lace knit heart design is the perfect choice.

Shawl measures about 26½" [67.5 cm] wide and 70" [178 cm] long.

Notes

1. Shawl is worked back and forth in rows.
2. The Shawl begins and ends with Seed stitch lower and top borders.
3. Each row of the main section is worked with Seed stitch side borders and separators with Heart Panel patterns worked between the borders and separators, as shown on the pattern stitch layout diagram.
4. Heart Panel patterns can be worked by following written instructions or reading charts. Read right side rows of charts from right to left and wrong side rows from left to right.

PATTERN STITCHES

Seed Stitch (worked over an odd number of sts)

Row 1 (right side): K1, *p1, k1; repeat from * to end of row.

Row 2: Purl the knit sts and knit the purl sts, as they appear.
Repeat Row 2 for Seed stitch.

Single Heart Panel (worked over 23 sts)

Row 1 (right side): K9, k2tog, yo, k1, yo, ssk, k9.

Row 2: Purl.

Row 3: K8, k2tog, yo, k3, yo, ssk, k8.

Row 4: Purl.

Row 5: K7, k2tog, yo, k5, yo, ssk, k7.

Row 6 and all wrong side rows: Purl.

Row 7: K6, k2tog, yo, k7, yo, ssk, k6.

Row 9: K5, k2tog, yo, k9, yo, ssk, k5.

Row 11: K6, yo, k2tog, k3, yo, k1, yo, k3, ssk, yo, k6—25 sts.

Row 13: K7, yo, ctd, yo, k3, yo, ctd, yo, k7—23 sts.

Row 14: Purl.

Repeat Rows 5-14 for Single Heart Panel.

Double Heart Center Panel (worked over 35 sts)

Row 1 (right side): K9, k2tog, yo, k1, yo, ssk, k7, k2tog, yo, k1, yo, ssk, k9.

Row 2 and all wrong side rows: Purl.

Row 3: K8, k2tog, yo, k3, yo, ssk, k5, k2tog, yo, k3, yo, ssk, k8.

Row 5: K7, k2tog, yo, k5, yo, ssk, k3, k2tog, yo, k5, yo, ssk, k7.

Row 7: K6, k2tog, yo, k7, yo, ssk, k1, k2tog, yo, k7, yo, ssk, k6.

Row 9: K5, k2tog, yo, k9, yo, cdd, yo, k9, yo, ssk, k5.

Row 11: K6, yo, k2tog, k3, yo, k1, yo, k3, ssk, yo, k1, yo, k2tog, k3, yo, k1, yo, k3, ssk, yo, k6—39 sts..

Row 13: K7, yo, ctd, yo, k3, yo, ctd, yo, k3, yo, ctd, yo, k3, yo, ctd, yo, k7—35 sts.

Row 14: Purl.

Repeat Rows 5-14 for Double Heart Center Panel.

Special Stitches

cdd (center double decrease) = Slip next 2 stitches together as if to knit the 2 stitches together, knit next stitch, pass the 2 slipped stitches over – 2 sts decreased.

ctd (center treble decrease) = Slip next 3 stitches together as if to knit the 3 stitches together, knit next stitch, pass the 3 slipped stitches over – 3 sts decreased.

ssk (slip, slip, knit) = Slip next 2 stitches, one at a time, as if to knit to right needle, insert point of left needle through front of stitches, knit these sts together through back loop – 1 st decreased.

continued...



2015 - 2018
WOMEN'S CHOICE AWARD™
AMERICA'S MOST RECOMMENDED
YARN BRAND

SHOP KIT

SHAWL

Cast on 101 sts.

Lower Border

Beginning with Row 1 of pattern, work in Seed stitch for 6 rows.

Main Section - Heart Panel Patterns

Row 1 (set-up row - right side): [K1, p1] twice, k1 (for Seed stitch side border), place marker, work Row 1 of Single Heart Panel, place marker, [k1, p1] twice, k1 (for Seed stitch separator), place marker, work Row 1 of Double Heart Center Panel, place marker, [k1, p1] twice, k1 (for Seed stitch separator), place marker, work Row 1 of Single Heart Panel, place marker, [k1, p1] twice, k1 (for Seed stitch side border).

Row 2: Work in Seed stitch to first marker, slip marker, purl to next marker (for Row 2 of Single Heart Panel), slip marker, work in Seed stitch to next marker, slip marker, purl to next marker (for Row 2 of Double Heart Center Panel), slip marker, work in Seed stitch to next marker, slip marker, purl to next marker (for Row 2 of Single Heart Panel), slip marker, work in Seed stitch to end of row.

Row 3: Work in Seed stitch to first marker, slip marker, work Row 3 of Single Heart Panel to next marker, slip marker, work in Seed stitch to next marker, slip marker, work Row 3 of Double Heart Center Panel to next marker, slip marker, work in Seed stitch to next marker, slip marker, work Row 3 of Single Heart Panel to next marker, slip marker, work in Seed stitch to end of row.

Row 4: Work in Seed stitch to first marker, slip marker, purl to next marker (for Row 4 of Single Heart Panel), slip

marker, work in Seed stitch to next marker, slip marker, purl to next marker (for Row 4 of Double Heart Center Panel), slip marker, work in Seed stitch to next marker, slip marker, purl to next marker (for Row 4 of Single Heart Panel), slip marker, work in Seed stitch to end of row.

Row 5: Work in Seed stitch to first marker, slip marker, work next row of Single Heart Panel to next marker, slip marker, work in Seed stitch to next marker, slip marker, work next row of Double Heart Center Panel to next marker, slip marker, work in Seed stitch to next marker, slip marker, work next row of Single Heart Panel to next marker, slip marker, work in Seed stitch to end of row.

Row 6 and all even rows: *Work in Seed stitch to next marker, slip marker, purl to next marker (for next row of Heart Panel), slip marker; repeat from * 2 more times, work in Seed stitch to end of row.

Rows 7-294: Repeat Rows 5 and 6, working the next row of each Heart Panel pattern in each row, until there are 29 hearts in each column of hearts, or to desired length. Note: **A** longer shawl may require more yarn.

Top Border

Work in Seed stitch for 6 rows.
Bind off in pattern.

FINISHING

Weave in ends. Block piece to measurements.

ABBREVIATIONS

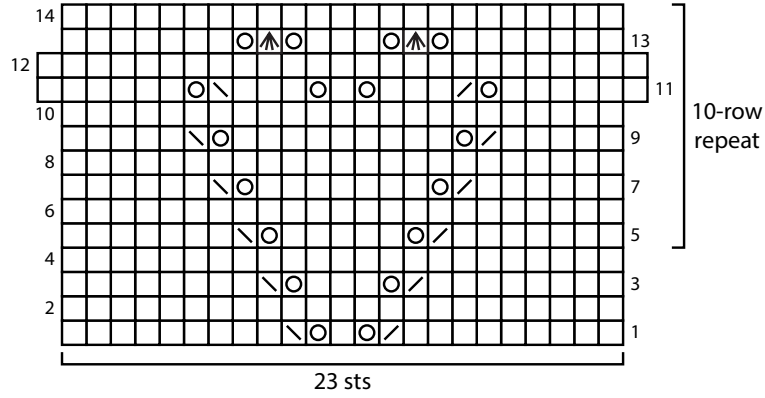
k = knit; **k2tog** = knit next 2 sts together; **p** = purl; **st(s)** = stitch(es); **yo** = yarn over; **[]** = work directions in brackets the number of times specified; * = repeat whatever follows the * as indicated.

See next page for charts





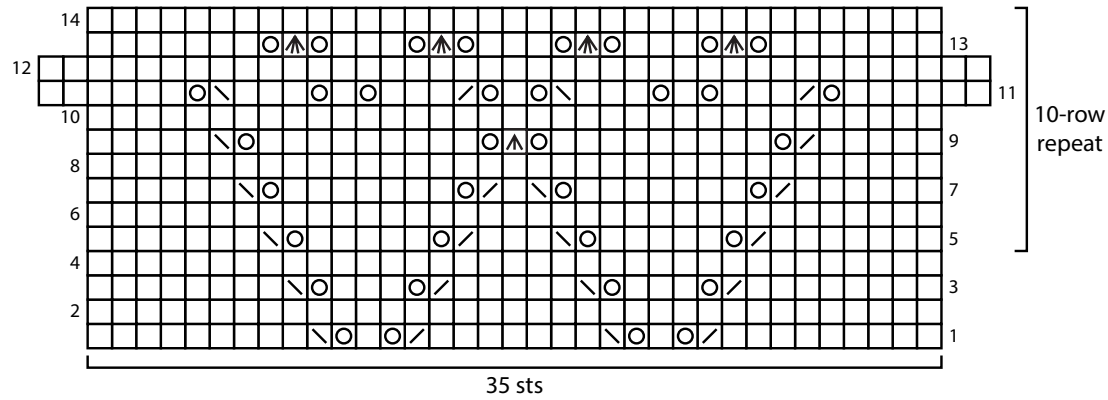
Single Heart Panel



KEY

- knit on right side, purl on wrong side
- purl on right side, knit on wrong side
- k2tog (knit 2 stitches together)
- ssk (slip, slip, knit)
- yarn over
- cdd (center double decrease)
- ctd (center triple decrease)

Double Heart Center Panel



Pattern Stitch Layout

