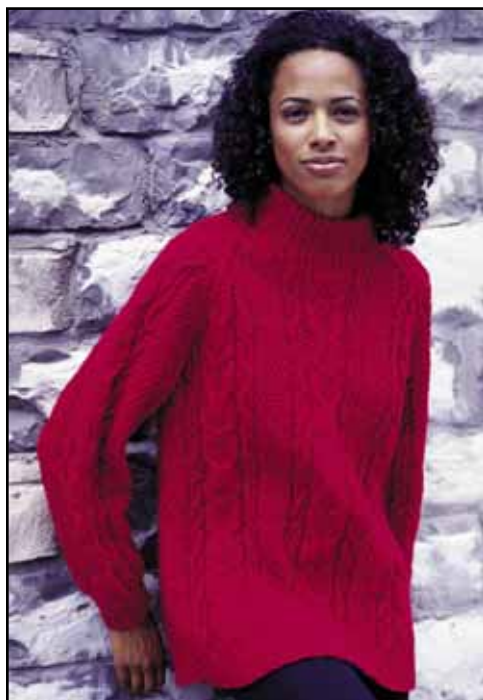


Patons
Classic Wool

Patons
DECOR



CABLED RAGLAN

SIZES

Bust measurement

Small	30-32 ins	[76-81 cm]
Medium	34-36 ins	[86-91 cm]
Large	38-40 ins	[97-102 cm]

Finished bust

Small	41 ins	[104 cm]
Medium	45 ins	[114.5 cm]
Large	47½ ins	[120.5 cm]

MATERIALS

Patons Decor (100 g/3.5 oz) or
Patons Classic Wool (100 g/3.5 oz)

Size	S	M	L
	9	9	10 balls

Sizes 4 mm (U.S. 6) and 4.5 mm (U.S. 7) knitting needles **or size needed to obtain tension**. Cable needle. 4 st holders.

TENSION

20 sts and 26 rows = 4 ins [10 cm] with larger needles in stocking st.

ABBREVIATIONS

KB1 = knit into back of next st.

PB1 = purl into back of next st.

C7TwB = slip next 4 sts onto cable needle and leave at back of work. KB1. P1. KB1, then (P1. K3) from cable needle.

C7TwF = slip next 3 sts onto cable needle and leave at front of work. K3. P1, then (KB1. P1. KB1) from cable needle.

C7B = slip next 4 sts onto cable needle and leave at back of work. K3, then (P1. KB1) twice from cable needle.

C7F = slip next 3 sts onto cable needle and leave at front of work. (KB1. P1) twice, then K3 from cable needle.

C5TwF = slip next 2 sts onto cable needle and leave at front of work. KB1. P2, then (KB1) twice from cable needle.

C5TwB = slip next 3 sts onto cable needle and leave at back of work. (KB1) twice, then slip 2 purl sts from cable needle onto left hand needle and purl them. (KB1) rem st from cable needle.

C5F = slip next 3 sts onto cable needle and leave at front of work. (KB1) twice, then slip 2 purl sts from cable needle onto left hand needle and purl them. (KB1) rem st from cable needle.

C5B = slip next 4 sts onto cable needle and leave at back of work. KB1, then slip 2 purl sts from cable needle onto left hand needle and purl them. (KB1) twice rem sts from cable needle.

INSTRUCTIONS

The instructions are written for smallest size. If changes are necessary for larger sizes the instructions will be written thus ().

PANEL PAT A (worked over 21 sts)

1st row: (RS). P3. K3. (P1. KB1) 4 times. P1. K3. P3.

2nd row: K3. P3. (K1. PB1) 4 times. K1. P3. K3.

3rd row: As 1st row.

4th row: As 2nd row.

5th row: P3. C7TwB. P1. C7TwF. P3.

6th row: K3. (PB1. K1) twice. P3. K1. P3. (K1. PB1) twice. K3.

7th row: P3. (KB1. P1) twice. K3. P1. K3. (P1. KB1) twice. P3.

8th to 15th rows: Rep 6th and 7th rows 4 times.

16th row: As 6th row.

17th row: P3. C7B. P1. C7F. P3.

18th row: As 2nd row.

19th to 24th rows: Rep 1st and 2nd rows 3 times.

These 24 rows form Panel Pat A.

PANEL PAT B (worked over 5 sts)

1st row: (RS). (KB1) twice. P2. KB1.

2nd row: PB1. K2. (PB1) twice.

3rd row: C5TwF.

4th row: (PB1) twice. K2. PB1.

5th row: KB1. P2. (KB1) twice.

6th to 9th rows: Rep 4th and 5th rows twice.

10th row: As 4th row.

11th row: C5F.

12th row: As 2nd row.

13th to 16th rows: Rep 1st and 2nd rows twice.

These 16 rows form Panel Pat B.



ABBREVIATIONS: www.patonsyarns.com/glossary

PANEL PAT C (worked over 5 sts)

1st row: (RS). KB1. P2. (KB1) twice.

2nd row: (PB1) twice. K2. PB1.

3rd row: C5TwB.

4th row: PB1. K2. (PB1) twice.

5th row: (KB1) twice. P2. KB1.

6th to 9th rows: Rep 4th and 5th rows twice.

10th row: As 4th row.

11th row: C5B.

12th row: As 2nd row.

13th to 16th rows: Rep 1st and 2nd rows twice.

These 16 rows form Panel Pat C.

BACK

With smaller needles cast on 122 (**127-132**) sts.

1st row: (RS). K2. *P1. KB1. P1. K2. Rep from * to end of row.

2nd row: P2. *K1. PB1. K1. P2. Rep from * to end of row.

Rep these 2 rows ribbing for 2½ ins [6 cm] ending on a 2nd row and inc 7 (**14-17**) sts evenly across last row. 129 (**141-149**) sts.

Change to larger needles and proceed in pat as follows:

1st row: (RS). (K1. P1) 1 (**4-6**) time(s). K1. *P2. Work 1st row Panel Pat B. Work 1st row Panel Pat A. Work 1st row Panel Pat C. P2**. (K1. P1) 4 times. K1. Rep from * once more, then from * to ** once. K1. (P1. K1) 1 (**4-6**) time(s).

2nd row: (P1. K1) 1 (**4-6**) time(s). P1. *K2. Work 2nd row Panel Pat C. Work 2nd row Panel Pat A. Work 2nd row Panel Pat B. K2**. (P1. K1) 4 times. P1. Rep from * once more, then from * to ** once. P1. (K1. P1) 1 (**4-6**) time(s).

3rd row: (P1. K1) 1 (**4-6**) time(s). P1. *P2. Work 3rd row Panel Pat B. Work 3rd row Panel Pat A. Work 3rd row Panel Pat C. P2**. (P1. K1) 4 times. P1. Rep from * once more, then from * to ** once. P1. (K1. P1) 1 (**4-6**) time(s).

4th row: (K1. P1) 1 (**4-6**) time(s). K1. *K2. Work 4th row Panel Pat C. Work 4th row Panel Pat A. Work 4th row Panel Pat B. K2**. (K1. P1) 4 times. K1. Rep from * once more, then from * to ** once. K1. (P1. K1) 1 (**4-6**) time(s).

These 4 rows form Irish moss st pat.

Panel pats are now in position.

Keeping cont of panel pats, cont in Irish moss st pat until work from beg measures 16½ (**17¼-17½**) ins [42 (**44-44.5**) cm], ending with RS facing for next row.

Shape raglans: Keeping cont of pat, cast off 2 sts beg next 2 rows.

1st row: K2. Sl1. K1. pssso. Pat to last 4 sts. K2tog. K2.

2nd row: P2. P2tog. Pat to last 4 sts. P2togtbl. P2.

3rd row: As 1st row.

4th row: P3. Pat to last 3 sts. P3.**

Rep last 4 rows 9 (**13-15**) times more. 65 (**53-49**) sts.

Next row: K2. Sl1. K1. pssso. Pat to last 4 sts. K2tog. K2.

Next row: P3. Pat to last 3 sts. P3.

Sizes S and M only: Rep last 2 rows 10 (**3**) times more.

All Sizes: Leave rem 43 (**45-47**) sts on a st holder.

FRONT

Work from ** to ** as given for Back.

Rep last 4 rows 9 (**10-10**) times more. 65 (**71-79**) sts.

Size S only: Next row: K2. Sl1. K1. pssso. Pat to last 4 sts. K2tog. K2. 63 sts.

Next row: P3. Pat to last 3 sts. P3.

All Sizes: Neck shaping: Next row: K2. Sl1. K1. pssso. Pat across 18 (**21-25**) sts (neck edge). **Turn.** Leave rem sts on a spare needle.

Size S only: Next row: Work 2tog. Pat to last 3 sts. P3.

Next row: K2. Sl1. K1. pssso. Pat to last 2 sts. Work 2tog.

Rep last 2 rows twice more. 12 sts.

Next row: Pat to last 3 sts. P3.

Next row: K2. Sl1. K1. pssso. Pat to last 2 sts. Work 2tog.

Rep last 2 rows 3 times more. 4 sts.

Next row: P4.

Next row: K2. Sl1. K1. pssso.

Next row: P3.

Sizes M and L only: 1st row: Work 2tog. Pat to last 4 sts. P2togtbl. P2.

2nd row: K2. Sl1. K1. pssso. Pat to last 2 sts. Work 2tog.

3rd row: Work 2tog. Pat to last 3 sts. P3.

4th row: As 2nd row.

Rep last 4 rows once more, then 1st and 2nd rows once. (**6-10**) sts.

Size M only: Next row: Pat to last 3 sts. P3.

Next row: K2. Sl1. K1. pssso. Pat to end of row.

Rep last 2 rows once more. 4 sts.

Next row: P4.

Next row: K2. Sl1. K1. pssso.

Next row: P3.

Size L only: Next row: Work 2tog. Pat to last 3 sts. P3.

Next row: K2. Sl1. K1. pssso. Pat to end of row.

Next row: Pat to last 4 sts. P2togtbl. P2.

Next row: K2. Sl1. K1. pssso. Pat to end of row.

Next row: Pat to last 3 sts. P3.

Next row: K2. Sl1. K1. pssso. Pat to end of row.

Next row: P1. P2togtbl. P2.

Next row: K2. Sl1. K1. pssso.

Next row: P3.

All Sizes: Next row: K1. Sl1. K1. pss0.

Next row: P2.

Next row: Sl1. K1. pss0. Fasten off.

With RS of work facing slip next 19 (**21-21**) sts from spare needle onto a st holder. Join yarn to rem sts and pat to last 4 sts. K2tog. K2.

Size S only: Next row: P3. Pat to last 2 sts. Work 2tog.

Next row: Work 2tog. Pat to last 4 sts. K2tog. K2.

Rep last 2 rows twice more. 12 sts.

Next row: P3. Pat to end of row.

Next row: Work 2tog. Pat to last 4 sts. K2tog. K2.

Rep last 2 rows 3 times more. 4 sts.

Next row: P4.

Next row: K2tog. K2.

Next row: P3.

Sizes M and L only: 1st row: P2. P2tog. Pat to last 2 sts. Work 2tog.

2nd row: Work 2tog. Pat to last 4 sts. K2tog. K2.

3rd row: P3. Pat to last 2 sts. Work 2tog.

4th row: As 2nd row.

Rep last 4 rows once more, then 1st and 2nd rows once. (**6-10**) sts.

Size M only: Next row: P3. Pat to end of row.

Next row: Pat to last 4 sts. K2tog. K2.

Rep last 2 rows once more. 4 sts.

Next row: P4.

Next row: K2tog. K2.

Next row: P3.

Size L only: Next row: P3. Pat to last 2 sts. Work 2tog.

Next row: Pat to last 4 sts. K2tog. K2.

Next row: P2. P2tog. Pat to end of row.

Next row: Pat to last 4 sts. K2tog. K2.

Next row: P3. Pat to end of row.

Next row: Pat to last 4 sts. K2tog. K2.

Next row: P2. P2tog. P1.

Next row: K2tog. K2.

Next row: P3.

All Sizes: Next row: K2tog. K1.

Next row: P2.

Next row: K2tog. Fasten off.

SLEEVES

With smaller needles cast on 47 (**52-52**) sts. Work 2½ ins [6 cm] in ribbing as given for Back ending on a 2nd row and inc 26 (**25-29**) sts evenly across last row. 73 (**77-81**) sts.

Change to larger needles and proceed in pat as follows:

1st row: (RS). (K1. P1) 0 (**1-2**) time(s). K1. P2. Work 1st row Panel Pat B. P2. (K1. P1) 4 times. K1. P2. Work 1st row Panel Pat C. Work 1st row Panel Pat A. Work 1st row Panel Pat B. P2. (K1. P1) 4 times. K1. P2. Work 1st row Panel Pat C. P2. K1. (P1. K1) 0 (**1-2**) time(s).

2nd row: (P1. K1) 0 (**1-2**) time(s). P1. K2. Work 2nd row Panel Pat C. K2. (P1. K1) 4 times. P1. K2. Work 2nd row Panel Pat B. Work 2nd row Panel Pat A. Work 2nd row Panel Pat C. K2. (P1. K1) 4 times. P1. K2. Work 2nd row Panel Pat B. K2. P1. (K1. P1) 0 (**1-2**) time(s).

3rd row: (P1. K1) 0 (**1-2**) time(s). P3. Work 3rd row Panel Pat B. P2. (P1. K1) 4 times. P3. Work 3rd row Panel Pat C. Work 3rd row Panel Pat A. Work 3rd row Panel Pat B. P2. (P1. K1) 4 times. P3. Work 3rd row Panel Pat C. P3. (K1. P1) 0 (**1-2**) time(s).

4th row: (K1. P1) 0 (**1-2**) time(s). K3. Work 4th row Panel Pat C. K2. (K1. P1) 4 times. K3. Work 4th row Panel Pat B. Work 4th row Panel Pat A. Work 4th row Panel Pat C. K2. (K1. P1) 4 times. K3. Work 4th row Panel Pat B. K3. (P1. K1) 0 (**1-2**) time(s).

These 4 rows form Irish moss st pat.

Panel pats are now in position.

Cont in Irish moss st pat, keeping cont of panel pats, inc 1 st each end of needle on next and following 6th rows until there are 89 (**89-93**) sts, then every following 8th row until there are 97 (**101-105**) sts taking inc sts in to pat.

Cont even in pat until Sleeve from beg measures 17 (**17½-18**) ins [43 (**44.5-45.5**) cm] ending with a WS row.

Shape raglans: Keeping cont of pat, cast off 2 sts beg next 2 rows.

1st row: K2. Sl1. K1. pss0. Pat to last 4 sts. K2tog. K2.

2nd row: P2. P2tog. Pat to last 4 sts. P2togtbl. P2.

3rd row: As 1st row.

4th row: P3. Pat to last 3 sts. P3.

Rep last 4 rows 9 (**10-11**) times more. 33 (**31-29**) sts.

Next row: K2. Sl1. K1. pss0. Pat to last 4 sts. K2tog. K2.

Next row: P3. Pat to last 3 sts. P3.

Rep last 2 rows 10 (**9-8**) times more.

Leave rem 11 sts on a st holder.

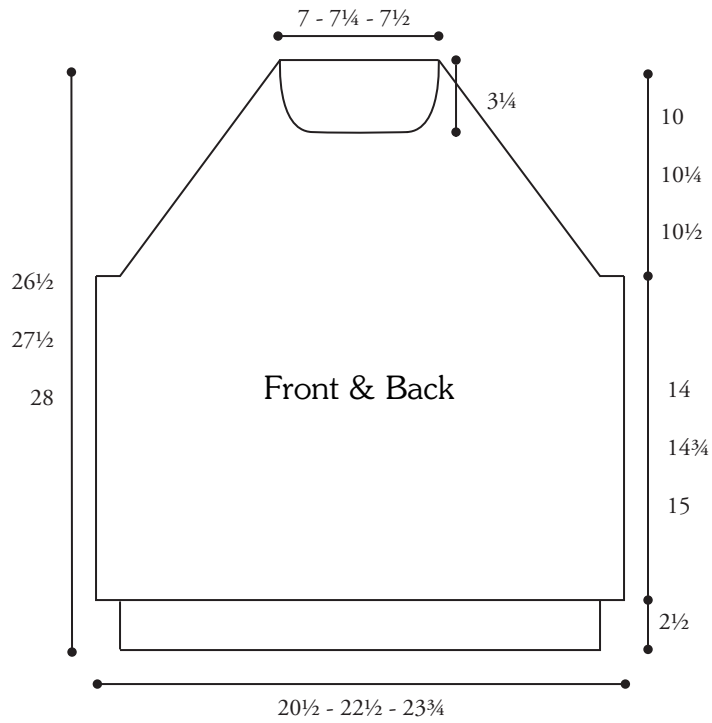
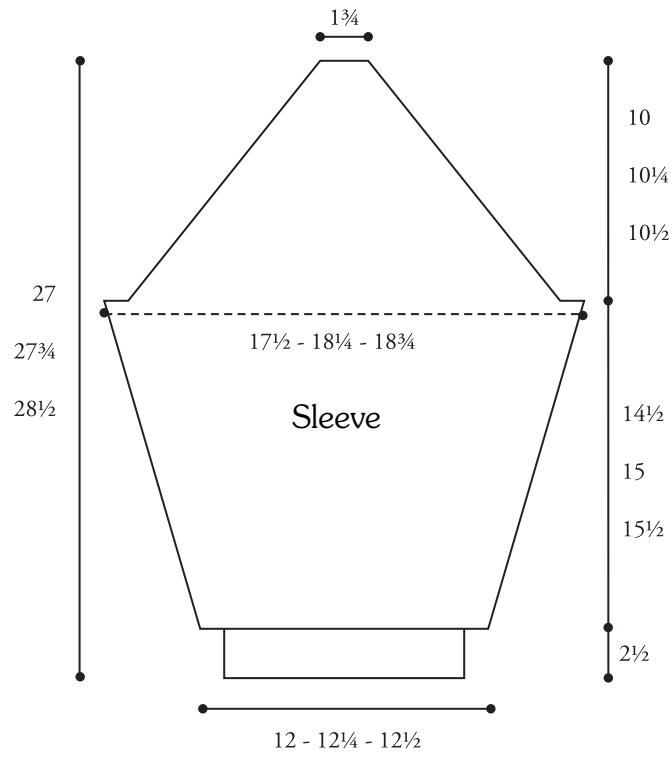
FINISHING

Pin garment pieces to measurements and cover with a damp cloth leaving to dry.

Neckband: Sew raglan seams leaving left back raglan seam open. With RS of work facing and smaller needles, K11 from left sleeve st holder dec 3 sts evenly across. Pick up and knit 19 (**19-21**) sts down left front neck edge. K19 (**21-21**) from front st holder dec 4 sts evenly across. Pick up and knit 19 (**19-21**) sts up right front neck edge. K11 from right sleeve st holder dec 3 sts evenly across and 43 (**45-47**) sts from back st holder dec 5 (**4-5**) sts evenly across. 107 (**112-117**) sts.

Beg and ending on a 2nd row, work 6 ins [15 cm] in ribbing as given for Back. Cast off.

Sew left back raglan and neckband seam. Fold neckband in half to WS and sew loosely in position. Sew side and sleeve seams.



Patons

... a part of your life.

P.O. Box 40, Listowel ON N4W 3H3