



 KNIT | SKILL LEVEL: **INTERMEDIATE**

ABBREVIATIONS

Approx = Approximately

Cont = Continue

Pat = Pattern

Rem = Remain(ing)(s)

Rep = Repeat

St(s) = Stitch(es)

Tog = Together

WS = Wrong side

MEASUREMENTS

Approx 10½" [26.5 cm] wide x 100" [254 cm] long.

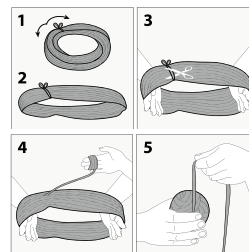
GAUGE

13 sts and 28 rows = 4" [10 cm] in garter st.

INSTRUCTIONS

Notes:

- Before working with Caron x Pantone multi-shade yarn braid, separate each color link and wind into 5 separate balls.



- Designate each different shade of the 5 separate yarn balls as Contrast A, B, C, D and E as noted on page 2 (or as desired).
- Due to finite amount of yarn in each shade, pattern gauge must be matched to ensure successful results
- When working from chart, use intarsia technique and wind small balls of colors to be used, one for each separate area of color in the chart. To change colors, twist the 2 colors around each other where they meet, on WS, to avoid hole. **Do not** strand colors across WS.
- Scarf is worked in sections. Refer to Color Table for shades in each section.

- Each color link will be referenced by its Pantone # (see label).

With A (as shown on page 2 Section 1 Chart), cast on 35 sts.

MATERIALS

Caron® x Pantone™ (3.5 oz/100 g; 127 yds/116 m)

Contrast A Coconut Cream (01001)

3 braids

Contrast 1 Summer Forest (01015)

3 braids

Contrast 2 Morning Blues (01016)

3 braids

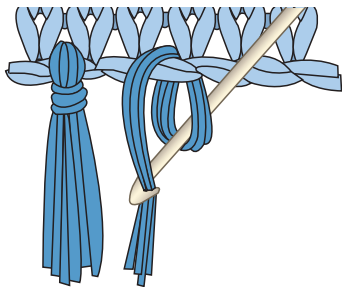
Size U.S. 10 (6 mm) knitting needles **or size needed to obtain gauge.**

Work Section 1 Chart (see page 2) in garter st (knit every row), reading RS rows from right to left and WS rows from left to right until 128 rows of chart are complete.

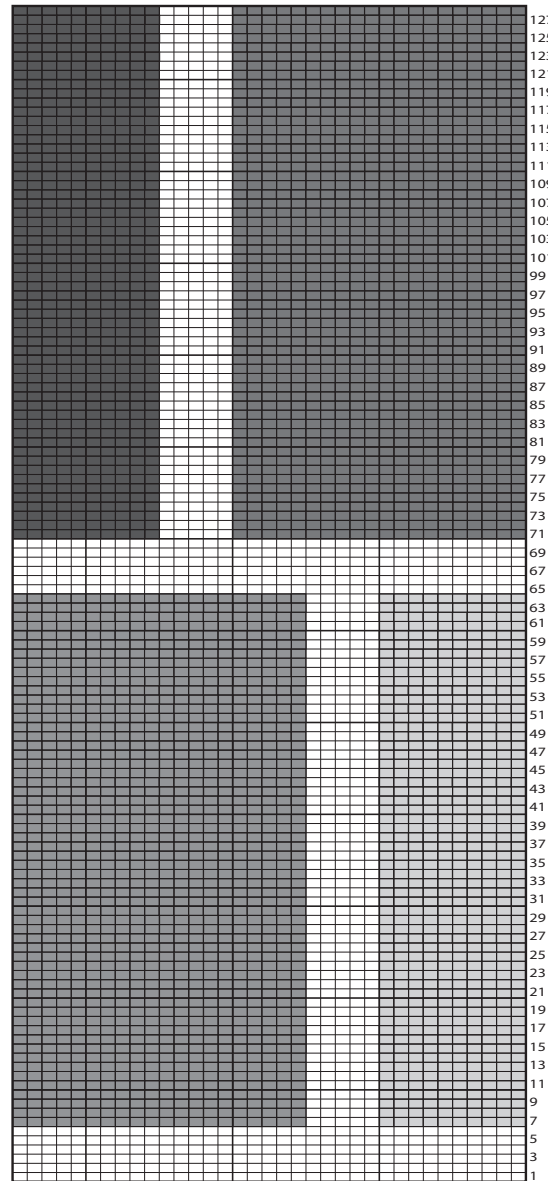
Following same chart, cont working Sections 2, 3, 4 and 5 in garter st, referencing Color Table for color changes for each Section, until 5 Sections of Scarf are complete.

With A, knit 6 rows (garter st).
Cast off.

Fringe: Cut strands of A 20" [51 cm] long. Taking 4 strands tog, fold in half and knot into fringe across ends of Scarf. Trim fringe evenly.



Chart



Section 1

A - 11-4302 B - 19-4340 C - 17-5034 D - 16-5806 E - 19-4026

Section 2

A - 11-4302 B - 13-0442 C - 19-0315 D - 14-4809 E - 19-0516

Section 3

A - 11-4302 B - 15-5706 C - 19-4024 D - 19-4340 E - 17-5034

Section 4

A - 11-4302 B - 16-5806 C - 19-4026 D - 13-0442 E - 19-0315

Section 5

A - 11-4302 B - 14-4809 C - 19-0516 D - 15-5706 E - 19-4024

Key
 □ = A
 □ = B
 □ = C
 □ = D
 □ = E

