



MATERIALS

Bernat® Softee® Cotton™ (4.2 oz/120 g; 254 yds/232 m)

Contrast A Warm Red (69007) **1 ball**

Contrast B Sandstone (69009) **1 ball**

Bernat® Softee® Baby Cotton™ (4.2 oz/120 g; 254 yds/232 m)

Contrast C Blush (52006) **1 ball**

Contrast D Feather Gray (52003) **1 ball**

Contrast E Cotton (52001) **1 ball**

Contrast F Aqua Mist (52010) **1 ball**

Size U.S. 6 (4 mm) Susan Bates® circular knitting needle 36" [91.5 cm] long **or size needed to obtain gauge.** Susan Bates® Steel Yarn Needle.



KNIT 1 SKILL LEVEL: **EASY**

ABBREVIATIONS

Approx = Approximately

Cont = Continue(ity)

K = Knit

K2tog = Knit next 2 stitches together

Pat = Pattern

Rep = Repeat

RS = Right side

Ssk = Slip next 2 stitches knitwise one at a time. Pass them back onto left-hand needle, then knit through back loops together

St(s) = Stitch(es)

Yo = Yarn over

MEASUREMENTS

Approx 36" x 48" [91.5 x 122 cm].

GAUGE

22 sts and 28 rows = 4" [10 cm] in stocking st.

INSTRUCTIONS

Note: Carry color not in use loosely up side of work unless otherwise stated.

Stripe Pat

With A, 46 rows. Join B. (With B, 2 rows. With A, 2 rows) 6 times. Break A.

With B, 44 rows. Join C. (With C, 2 rows. With B, 2 rows) 6 times. Break B.

With C, 44 rows. Join D. (With D, 2 rows. With C, 2 rows) 6 times. Break C.

With D, 44 rows. Join E. (With E, 2 rows. With D, 2 rows) 6 times. Break D.

With E, 44 rows. (With F, 2 rows. With E, 2 rows) 6 times. Break E.

With F, 46 rows.

These 388 rows form Stripe Pat.

BLANKET

With A, cast on 187 sts (multiple of 12 sts + 7). **Do not** join. See chart. Working back and forth across needle in rows, proceed as follows:

1st to 6th rows: Knit, noting first row is RS.

7th row: K4. *(K2tog) twice. (yo. K1) 3 times. yo. (ssk) twice. K1. Rep from * to last 3 sts. K3.

8th row: K4. Purl to last 4 sts. K4.

9th to 14th rows: Rep 7th and 8th rows 3 times more.

15th and 16th rows: Knit.

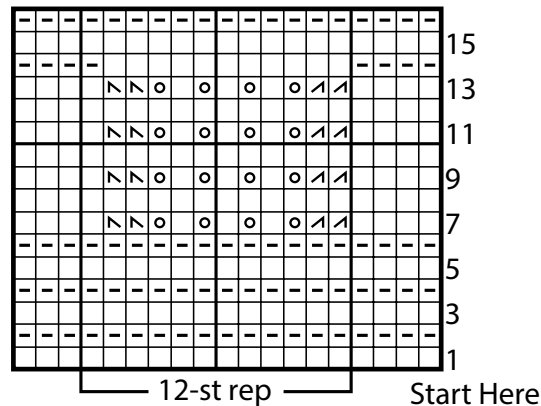
Last 16 rows form Lace Pat.

First 16 rows of Stripe Pat are complete.

Cont in Lace Pat as established until 388 rows of Stripe Pat are complete (ending on 4th row of Lace Pat).

Cast off.

Lace Pat Chart



Key

- Knit on RS rows. Purl on WS rows.
- Purl on RS rows. Knit on WS rows.
- K2tog
- ssk
- yo

