




MATERIALS

Bernat® Pop! Bulky™ (9.8 oz/280 g; 147 yds/138 m)
Café au Lait (93001) **5 balls**

Size U.S. N/15 (10 mm) crochet hook **or size needed to obtain gauge.**

 CROCHET | SKILL LEVEL: **EASY**

ABBREVIATIONS

Approx = Approximate(ly)

Beg = Begin(ning)

Ch = Chain(s)

Dc = Double crochet

Pat = Pattern

Rep = Repeat

RS = Right side

Sc = Single crochet

Sp = Space

MEASUREMENTS

Approx 54" x 60" [137 x 152.5 cm].

GAUGE

7 sc and 8 rows = 4" [10 cm].

INSTRUCTIONS

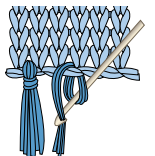
Ch 111.

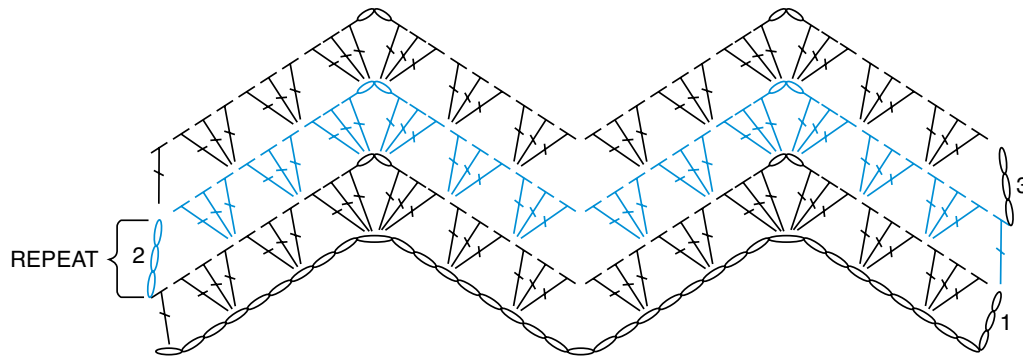
1st row: (RS). 3 dc in 6th ch from hook (turning ch counts as 1 dc and ch 2 sp). Skip next 2 ch. 3 dc in next ch. Skip next 2 ch. (3 dc. Ch 2. 3 dc) in next ch. (Skip next 2 ch. 3 dc in next ch) twice. *Skip next 5 ch. (3 dc in next ch. Skip next 2 ch) twice. (3 dc. Ch 2. 3 dc) in next ch. (Skip next 2 ch. 3 dc in next ch) twice. Rep from * 4 more times. Skip next 2 ch. 1 dc in last ch. Turn.

2nd row: Ch 3 (counts as dc). (3 dc between 2-dc groups) twice. (3 dc. Ch 2. 3 dc) in next ch-2 sp. *(3 dc between 2-dc groups) twice. Skip next two 2-dc groups. (3 dc between next 2-dc groups) twice. (3 dc. Ch 2. 3 dc) in next ch-2 sp. (3 dc between next 2-dc groups) twice. Rep from * to end of row. 1 dc in top of turning ch. Turn.

Rep last row for pat until work from beg measures 60" [152.5 cm]. Fasten off.

Fringe: Cut 14" [35.5 cm] lengths of yarn. With 4 strands tog, knot into fringe at points of Blanket. Trim fringe evenly.





REDUCED SAMPLE OF PATTERN

STITCH KEY

○ = chain (ch)

┆ = double crochet (dc)

