



KNIT | SKILL LEVEL: EASY

ABBREVIATIONS

Approx =

Approximately

Beg = Beginning

Cont = Continue(ity)

K = Knit

Kfb = Increase

1 stitch by knitting
into front and back of
next stitch

K2tog = Knit next
2 stitches together

P = Purl

Pat = Pattern

PM = Place marker

Rem = Remain(ing)

Rep = Repeat

RS = Right side

St(s) = Stitch(es)

Tog = Together

WS = Wrong side

MEASUREMENTS

Blanket measures approx 22¾" [58 cm] wide x 35¼" [89.5] long.

GAUGES

16 sts and 30 rows = 4" [10 cm] in
garter st.

17 sts and 23 rows = 4" [10 cm] in
Circle St Pat.

INSTRUCTIONS

BLANKET

Note: Circle St Pat is worked over
multiple of 13 sts + 18.

With MC, cast on 91 sts. **Do not**
join. Working back and forth
across needle, knit 14 rows (garter
st), noting first row is WS.

Next row: (WS). (K14. Kfb) 5 times.
K16. 96 sts.

Proceed in Circle St Pat as follows
(see chart on page 3).

1st row: (RS). K8. Purl to last 8 sts.
K8.

2nd row: Knit.

3rd row: K8. P5. *K5. P8. Rep from
* to last 18 sts. K5. P5. K8.

4th row: K12. P7. *K6. P7. Rep from
* to last 12 sts. K12.

5th row: K8. P4. *K7. P6. Rep from
* to last 19 sts. K7. P4. K8.

6th row: K11. P9. *K4. P9. Rep from
* to last 11 sts. K11.

7th row: K8. P2. *K11. P2. Rep from
* to last 8 sts. K8.

MATERIALS

Red Heart® Super Saver® (7 oz/198 g; 364 yds/333 m)

Main Color (MC) Jade (3862)

3 balls or 981 yds/897 m

Contrast A Lemon (235)

1 ball or 45 yds/41 m

Size U.S. 8 (5 mm) Susan Bates® Silvalume® circular knitting needle
36" [91.5] long **or size needed to obtain gauge.** Susan Bates® yarn
needle. Susan Bates® split-lock stitch count markers. Polyester
stuffing. 2½" [6 cm] wide piece of cardboard for tassels.

8th row: K10. P11. *K2. P11. Rep from * to last 10 sts. K10.

9th to 13th rows: Rep 7th and 8th rows twice more, then rep 7th row once.

14th row: As 6th row.

15th row: As 5th row.

16th row: As 4th row.

17th row: As 3rd row.

18th row: As 2nd row.

Rep 1st to 18th rows for Circle St Pat until work from beg measures approx 33¼" [84.5 cm], ending on a 1st row.

Next row: (WS). (K14. K2tog) 5 times. K16. 91 sts. Knit 14 rows (garter st). Cast off.

PILLOW TUBE

With MC, cast on 171 sts. **Do not** join. Working back and forth across needle, work in garter st (knit every row) until piece measures 12½" [32 cm].

Cast off.

Sew cast-on and cast-off edges tog to form long tube.

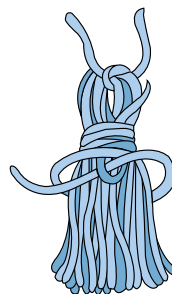
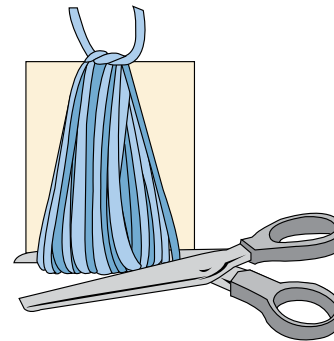
ASSEMBLY

PM to mark center of Pillow Tube. With RS facing, PM at center of cast-off edge of Blanket. Loosely stuff middle 22¾" [58 cm] of Pillow Tube leaving open ends unstuffed.

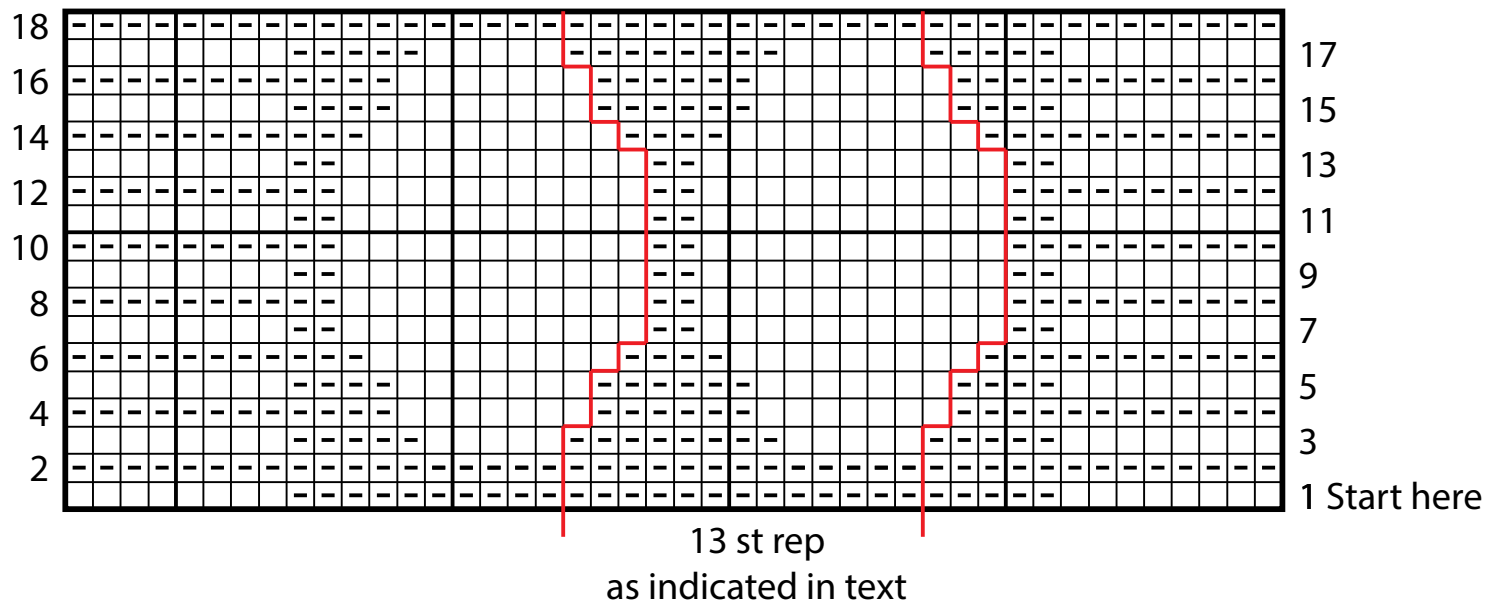
Match markers and align sewn seam of Pillow Tube with edge of Blanket, sew Pillow Tube seam to cast-off edge of Blanket, leaving unstuffed Pillow ends detached.

Cont stuffing 1 side of Pillow Tube, shaping as you stuff to turn at corner and align with side edges of Blanket. With MC, weave through end sts of Tube, and cinch tightly to close creating slightly flattened end. Fasten off tightly. With MC, sew seam of Pillow Tube to side edge of Blanket. Rep for other side of Pillow making sure sides are even (as shown in photo).

Tassel (make 4): Cut a piece of cardboard 2½" [6 cm] wide. Wind A around cardboard 60 times. Break yarn leaving a long end and thread end through a needle. Slip needle through all loops and tie tightly. Remove cardboard and wind yarn tightly around loops ¾" [2 cm] below fold. Fasten securely. Cut through rem loops and trim ends evenly. Sew 1 tassel to center of each cinched end of Pillow Tube and each corner at bottom edge of Blanket.



Circle St Pat



KEY

- ☐ = Knit on RS rows. Purl on WS rows.
- ◻ = Purl on RS rows. Knit on WS rows.