



CROCHET | SKILL LEVEL: INTERMEDIATE

ABBREVIATIONS

Approx = Approximately
Beg = Beginning
Ch = Chain(s)
Cont = Continue(ity)
Dc = Double crochet
Dec = Decrease
Hdc = Half double crochet
Rem = Remaining

Rep = Repeat
Rnd(s) = Round(s)
RS = Right side
Sc = Single crochet
Sl st = Slip stitch
Sp(s) = Space(s)
St(s) = Stitch(es)
Yoh = Yarn over hook

MEASUREMENTS

Approx 48 x 58" [122 x 147.5 cm]

GAUGE

11 dc and 6 rows = 4" [10 cm]

INSTRUCTIONS

Note: Afghan is worked diagonally from corner to corner. When working from chart, wind small balls of the colors to be used, one for each separate area of color in the design. Start new colors at appropriate points. To change color, work to last 2 loops on hook, yoh with new color. Pull through 2 loops on hook to complete st and proceed in new color.

With MC, ch 6. See diagram on page 2 and Chart on page 3 – each square of chart represents 1 block.
1st row: (RS). 1 dc in 4th ch from hook (counts as 2 dc). 1 dc in each of last 2 ch. Turn. 1 block made.
2nd row: Ch 6. 1 dc in 4th ch from hook. 1 dc in each of next 2 ch – beg block made. (Sl st. Ch 3. 3 dc) in next ch-3 sp – block made. Turn. 2 blocks.
3rd row: Beg block. *Block in next ch-3 sp. Rep from * to end of row. Turn. 3 blocks.
 Keeping cont of color changes in Chart (each square on grid represents 1 block), rep last row until 70th row of chart is complete. 70 blocks.

MATERIALS

Caron® One Pound™ (16 oz/454 g; 812 yds/742 m)

Main Color (MC) Off White (10514) **2 balls or 950 yds/870 m**

Contrast A Living Coral (02003) **1 ball or 360 yds/330 m**

Contrast B Raspberry Pink (10646) **2 balls or 1195 yds/1095 m**

Contrast D Black (10503) **1 ball or 82 yds/75 m**

Caron® Jumbo™ (12 oz/340 g; 595 yds/544 m)

Contrast C Bouquet (09042) **2 balls or 965 yds/885 m**

Size U.S. I/9 (5.5 mm) crochet hook **or size needed to obtain gauge.**

Proceed as follows:

71st row: (RS). Sl st in each of first 3 dc. *Block in next ch-3 sp. Rep from * to end of row. Turn. 70 blocks.

72nd row: Beg block. *Block in next ch-3 sp. Rep from * to last ch-3 sp. Sl st in last ch-3 sp. (**Do not** make a block.) Turn. 70 blocks. Keeping cont of Chart, rep last 2 rows until 84th row of chart is complete.

Proceed as follows to dec corner:

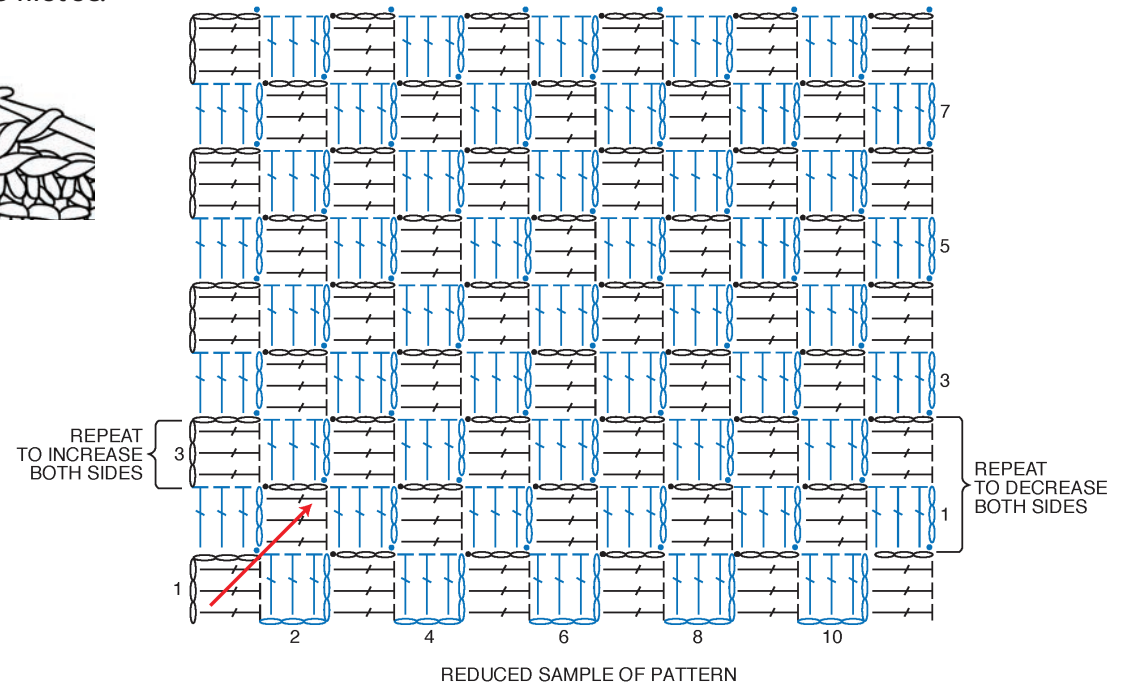
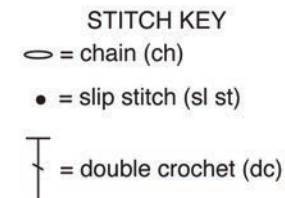
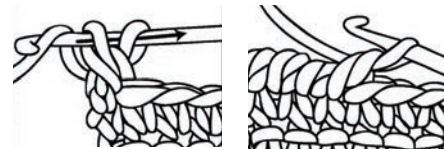
85th row: Sl st in each of first 3 dc. *Block in next ch-3 sp. Rep from * to last ch-3 sp. Sl st in last ch-3 sp. (**Do not** make a block.) Turn. Keeping cont of Chart, rep last row until 1 block rem. Fasten off.

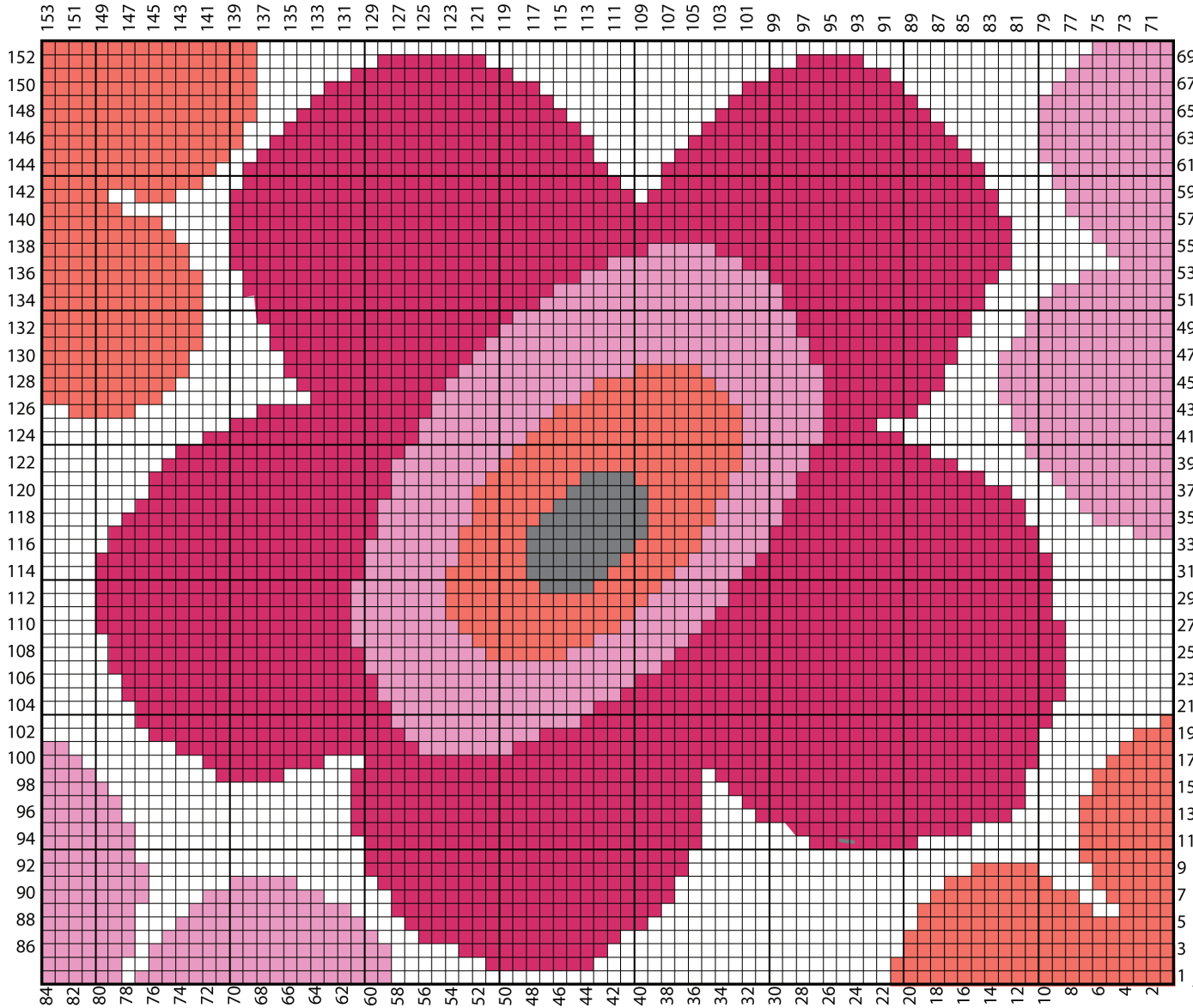
Edging: 1st rnd: (RS). Join MC with sl st at bottom corner. *Ch 3. Sl st between next 2 blocks. Rep from * to next corner. (Sl st. Ch 3. Sl st) in next corner.** Rep from * to **, ending last rep with sl st in first corner. Join with hdc to first sl st.

2nd rnd: Ch 3 (counts as dc). (2 dc. Ch 1. 3 dc) around post of hdc for first corner. *3 dc in next ch-3 sp. Rep from * around, having (3 dc. Ch 1. 3 dc) in corners. Join with sl st to top of ch-3.

3rd rnd: Ch 1. 3 sc around post of joining sc. 1 sc in each dc around, working 3 sc in corner ch-1 sps. Join with sl st to first sc.

4th rnd: Ch 1. Working from **left to right**, instead of from **right to left**, as usual, work 1 reverse sc in each sc around. Join with sl st to first sc. Fasten off.





Key

- = MC
- = Contrast A
- = Contrast B
- = Contrast C
- = Contrast D

Start Here
Blanket is worked diagonally - corner-to-corner