

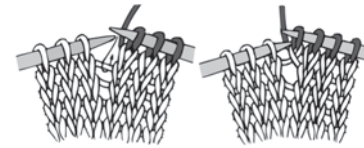


BULKY **5** **KNIT** | SKILL LEVEL: **EASY**

ABBREVIATIONS

Beg = Beginning
Dec = Decreasing
K = Knit
M1 = Make 1 stitch by picking up horizontal loop lying before next stitch and knitting into back of loop

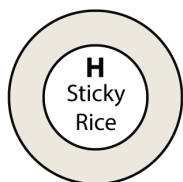
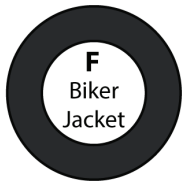
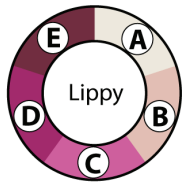
M1P = Make 1 stitch by picking up horizontal loop lying before next stitch and purling into back of loop
P = Purl
Pat = Pattern
PM = Place marker
Rep = Repeat
Rnd(s) = Round(s)
St(s) = Stitch(es)



MATERIALS

Caron® Colorama™ O'Go™ (6.4 oz/180 g; 228 yds/208 m)

Sizes	XS/S	M	L	XL	2/3XL	4/5XL	O'Go(s)
Lippy (68004)	1	1	1	1	2	2	O'Go(s)
Contrast F Biker Jacket (68021)	1	1	1	1	2	2	O'Go(s)
Contrast G Pave the Way (68022)	1	1	1	1	2	2	O'Go(s)
Contrast H Sticky Rice (68024)	1	1	1	1	2	2	O'Go(s)



Sizes U.S. 10 (6 mm) and U.S. 10½ (6.5 mm) circular knitting needles 16" [40.5 cm] and 29" [73.5 cm] long. Set of 4 sizes U.S. 10 (6 mm) and U.S. 10½ (6.5 mm) double-pointed knitting needles **or size needed to obtain gauge.** 2 stitch holders. Stitch markers. Yarn needle.

SIZES

To fit bust measurement

XS/S	28-34" [71-86.5 cm]
M	36-38" [91.5-96.5 cm]
L	40-42" [101.5-106.5 cm]
XL	44-46" [112-117 cm]
2/3XL	48-54" [122-137 cm]
4/5XL	56-62" [142-157.5 cm]

Finished bust

XS/S	37" [94 cm]
M	41" [104 cm]
L	44" [112 cm]
XL	49" [124.5 cm]
2/3XL	58" [147.5 cm]
4/5XL	64" [162.5 cm]

GAUGE

12 sts and 18 rows = 4" [10 cm] with larger needles in stocking st.

INSTRUCTIONS

The instructions are written for smallest size. If changes are necessary for larger sizes the instructions will be written thus (). Numbers for each size are shown in the same color throughout the pattern. When only one number is given in black, it applies to all sizes.

Notes:

- To begin working with the O'Go format, carefully cut plastic tie where the ends of the O'Go meet.
- Pull tie to remove
- Contrast colors can be easily separated by gently pulling apart and cutting at the color transition. Each color is ready to use. Follow color guide shown in Materials section for each O'Go (Contrast A, B, C, D, E, F, G, H). You may find it helpful to place each color section in its own resealable (zip lock) bag and label each bag A, B, C, D, E.

Note: Sweater is knit in one piece from top down.

Stripe Pat I

Work 4 rnds of each color in the following sequence: D, C, B, A, B, C, D and E.

These 32 rnds form Stripe Pat.



Stripe Pat II

Purl 2 rnds of each color in the following sequence: F, G, H and G. These 8 rnds form Stripe Pat.

BODY

Neckband: With smaller/short circular needle and E, cast on **44 (48-52-56-64-68)** sts. Join in rnd. PM on first st.

1st rnd: *P1. K1. Rep from * around.

Rep last rnd of (K1. P1) ribbing for 3" [7.5 cm].

Change to larger/short circular needle.

Proceed in Stripe Pat I, work Chart to end of chart [see chart on page 3 noting 4-st chart rep will be worked **11 (12-13-14-16-17)** times]. **165 (180-195-210-240-255)** sts.

Note: Change to larger/long circular needle when necessary to accommodate all sts.

Next rnd: Keeping cont of Stripe Pat I, P**3 (0-6-0-0-0)**. *M1P. P**18 (15-27-21-30-51)**. Rep from * around. **174 (192-202-220-248-260)** sts.

Keeping cont of Stripe Pat I, purl next **7 (9-13-15-17-19)** rnds.

Divide for Sleeves and Body:

1st rnd: With appropriate color, P**51 (58-61-68-80-86)** for Back. Slip next **36 (38-40-42-44-44)** sts for Left Sleeve onto a st holder. Cast on **4 (4-6-6-8-10)** sts for underarm. P**51 (58-61-68-80-86)** for Front. Slip last **36 (38-40-42-44-44)** sts for Right Sleeve onto a st holder. Cast on **4 (4-6-6-8-10)** sts for underarm. Join in rnd. PM after **2nd (2nd-3rd-3rd-4th-5th)** cast on st. **110 (124-134-148-176-192)** sts for Body. Stripe Pat I section is complete. Break yarn.

Join F and proceed in Stripe Pat II, purl in rnds until Body from dividing rnd measures **13 (13-14½-14½-14-13)" [33 (33-37-37-35.5-33)** cm]. Break G and H.

Change to smaller/long circular needle and with F work 2" [5 cm] in (K1. P1) ribbing as given for neckband. Cast off in ribbing.

SLEEVES

With larger set of double-pointed needles and F beg at underarm marker, pick up and knit **2 (2-3-3-4-5)** sts. P**36 (38-40-42-44-44)** from st holder. Pick up and knit **2 (2-3-3-4-5)** sts. Divide sts onto 3 needles. Join in rnd. PM for beg of rnd. **40 (42-46-48-52-54)** sts. First rnd of Stripe Pat II is complete.

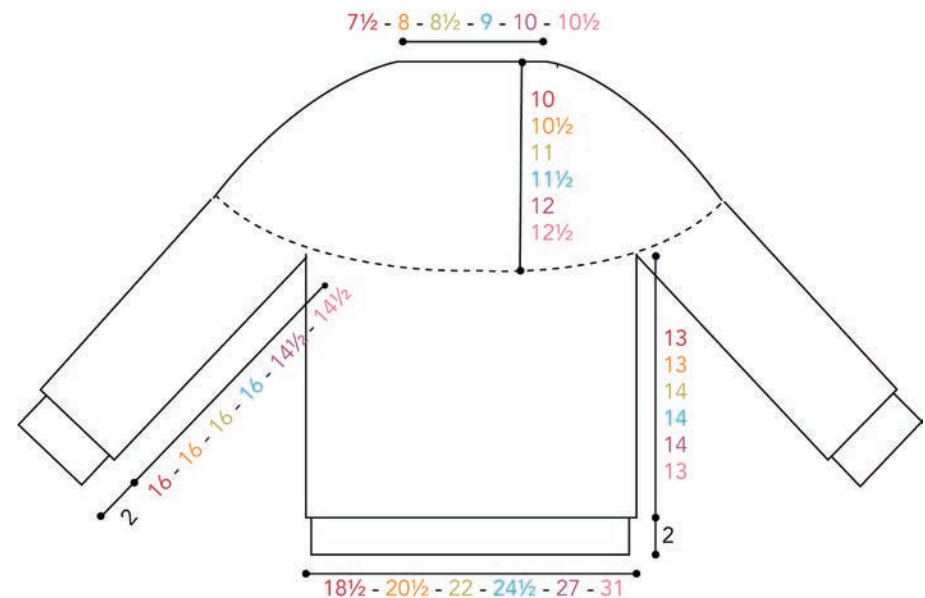
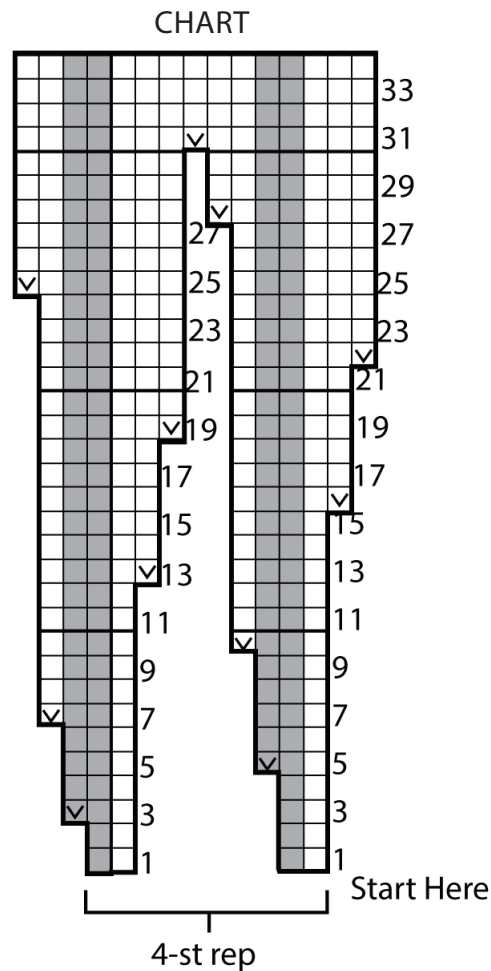
Keeping cont of Stripe Pat II, purl **8 (8-5-5-6-6)** rnds.

Dec 1 st at beg and end of next rnd and every following **12th (10th-9th-9th-7th-7th)** rnd until there are **30 (30-32-34-36-38)** sts.

Cont even in Stripe Pat II until Sleeve from pick up rnd measures **16 (16-16-16-14½-14½)" [40.5 (40.5-40.5-40.5-37-37) cm]**. Break G and H.

Change to smaller set of double-pointed needles and with F, work 2" [5 cm] in (K1. P1) ribbing as given for neckband.

Cast off in ribbing.



Key

- = Knit
- = Purl
- ☑ = M1
- ☑ = M1P

