



## MATERIALS

**Bernat® Roving™** (3.5 oz/100 g; 120 yds/109 m)

**Contrast A** Quartz Pink (00717) **2 balls**

**Contrast B** Cherry (00436) **2 balls**

**Contrast C** Raspberry (00435) **2 balls**

Size U.S. 11 (8 mm) knitting needles **or size needed to obtain gauge.**  
Cable needle.

## ABBREVIATIONS:

**Approx** = Approximate(ly)

**Beg** = Begin(ning)

**C4B** = Slip next 2 stitches onto cable needle and leave at back of work. K2, then K2 from cable needle.

**Dec** = Decrease(ing)

**Inc** = Increase(ing)

**K** = Knit

**K2tog** = Knit next 2 stitches together

**P** = Purl

**P2tog** = Purl next 2 stitches together

**P2togtbl** = Purl next 2 stitches together through back loops

**Pat** = Pattern

**Pss** = Pass slipped stitch over

**RS** = Right side

**Sl1** = Slip next stitch knitwise

**St(s)** = Stitch(es)

**T3B** = Slip next stitch onto cable needle and leave at back of work. K2, then P1 from cable needle.

**T3F** = Slip next 2 stitches onto cable needle and leave at front of work. P1, then K2 from cable needle.

**T3Bdec** = Slip next 2 stitches onto cable needle and hold at back of work. K2, then P2tog from cable needle.

**T3Fdec** = Slip next 2 stitches onto cable needle and leave at front of work. P2tog, then K2 from cable needle.

**Tog** = Together

**Yo** = Yarn over

 KNIT | SKILL LEVEL: INTERMEDIATE

## MEASUREMENTS

Approx 12" [30.5 cm] wide x 100" [254 cm] long, excluding fringe.

## GAUGES

10 sts and 14 rows = 4" [10 cm] in stocking stitch.

## INSTRUCTIONS

With C, cast on 30 sts.

Knit 14 rows (garter st), noting 1st row is RS and inc 4 sts evenly across last row. 34 sts. Break C. Join A.

With A, proceed as follows:

**1st row:** (RS). Knit.

**2nd row:** K1. P5. K9. P4. K9. P5. K1.

Beg working Argyle Cable Lace Pat as follows: See chart on page 3.

**1st row:** K2. yo. Sl1. K2tog. pssso. yo. K1. P2. yo. P2tog. P5. C4B. P5. P2togtbl. yo. P2. K1. yo. Sl1. K2tog. pssso. yo. K2.

**2nd row:** K1. P5. K9. P4. K9. P5. K1. **3rd row:** K6. P3. yo. P2tog. P3. T3B. T3F. P3. P2togtbl. yo. P3. K6.

**4th row:** K1. P5. K8. P2. K2. P2. K8. P5. K1.

**5th row:** K2. yo. Sl1. K2tog. pssso. yo. K1. P4. yo. P2tog. P1. T3B. P2. T3F. P1. P2togtbl. yo. P4. K1. yo. Sl1. K2tog. pssso. yo. K2.

**6th row:** K1. P5. K7. P2. K4. P2. K7. P5. K1.

**7th row:** K6. P6. T3B. P4. T3F. P6. K6.

**8th row:** K1. P5. K6. P2. K6. P2. K6. P5. K1.

**9th row:** K2. yo. Sl1. K2tog. pssso. yo. K1. P5. T3B. P6. T3F. P5. K1. yo. Sl1. K2tog. pssso. yo. K2.

**10th row:** K1. P5. K5. P2. K8. P2. K5. P5. K1.

**11th row:** K6. P4. T3B. yo. P2tog. P4. P2togtbl. yo. T3F. P4. K6.

**12th row:** K1. P5. K4. P2. K10. P2. K4. P5. K1.

**13th row:** K2. yo. Sl1. K2tog. pssso. yo. K1. P3. T3B. P2. yo. P2tog. P2. P2togtbl. yo. P2. T3F. P3. K1. yo. Sl1. K2tog. pssso. yo. K2.

**14th row:** K1. P5. K3. P2. K12. P2. K3. P5. K1.

**15th row:** K6. P2. T3B. P4. yo. P2tog. P2togtbl. yo. P4. T3F. P2. K6. **16th row:** K1. P5. K2. P2. K14. P2. K2. P5. K1.

**17th row:** K2. yo. Sl1. K2tog. pssso. yo. K1. P2. K2. P14. K2. P2. K1. yo. Sl1. K2tog. pssso. yo. K2.

**18th row:** As 16th row.

**19th row:** K6. P2. T3F. P3. P2togtbl. yo. P2. yo. P2tog. P3. T3B. P2. K6.

**20th row:** As 14th row.

**21st row:** K2. yo. Sl1. K2tog. pssso. yo. K1. P3. T3F. P1. P2togtbl. yo. P4. yo. P2tog. P1. T3B. P3. K1. yo. Sl1. K2tog. pssso. yo. K2.

**22nd row:** As 12th row.

**23rd row:** K6. P4. T3Fdec. yo. P6. yo. T3Bdec. P4. K6.

**24th row:** As 10th row.

**25th row:** K2. yo. Sl1. K2tog. pssso. yo. K1. P5. T3F. P6. T3B. P5. K1. yo. Sl1. K2tog. pssso. yo. K2.

**26th row:** As 8th row.

**27th row:** K6. P4. P2togtbl. yo. T3F. P4. T3B. yo. P2tog. P4. K6.

**28th row:** As 6th row.

**29th row:** K2. yo. Sl1. K2tog. pssso. yo. K1. P3. P2togtbl. yo. P2. T3F. P2. T3B. P2. yo. P2tog. P3. K1. yo. Sl1. K2tog. pssso. yo. K2.

**30th row:** As 4th row.

**31st row:** K6. P2. P2togtbl. yo. P4. T3F. T3B. P4. yo. P2tog. P2. K6.

**32nd row:** As 2nd row.

These 32 rows form Argyle Cable Lace Pat.

Work 32 rows of Argyle Cable Lace Pat 4 times more. Break A, join B.

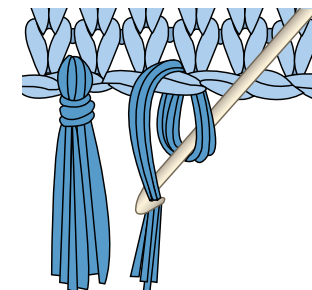
With B, work 32 rows of Argyle Cable Lace Pat 5 times.

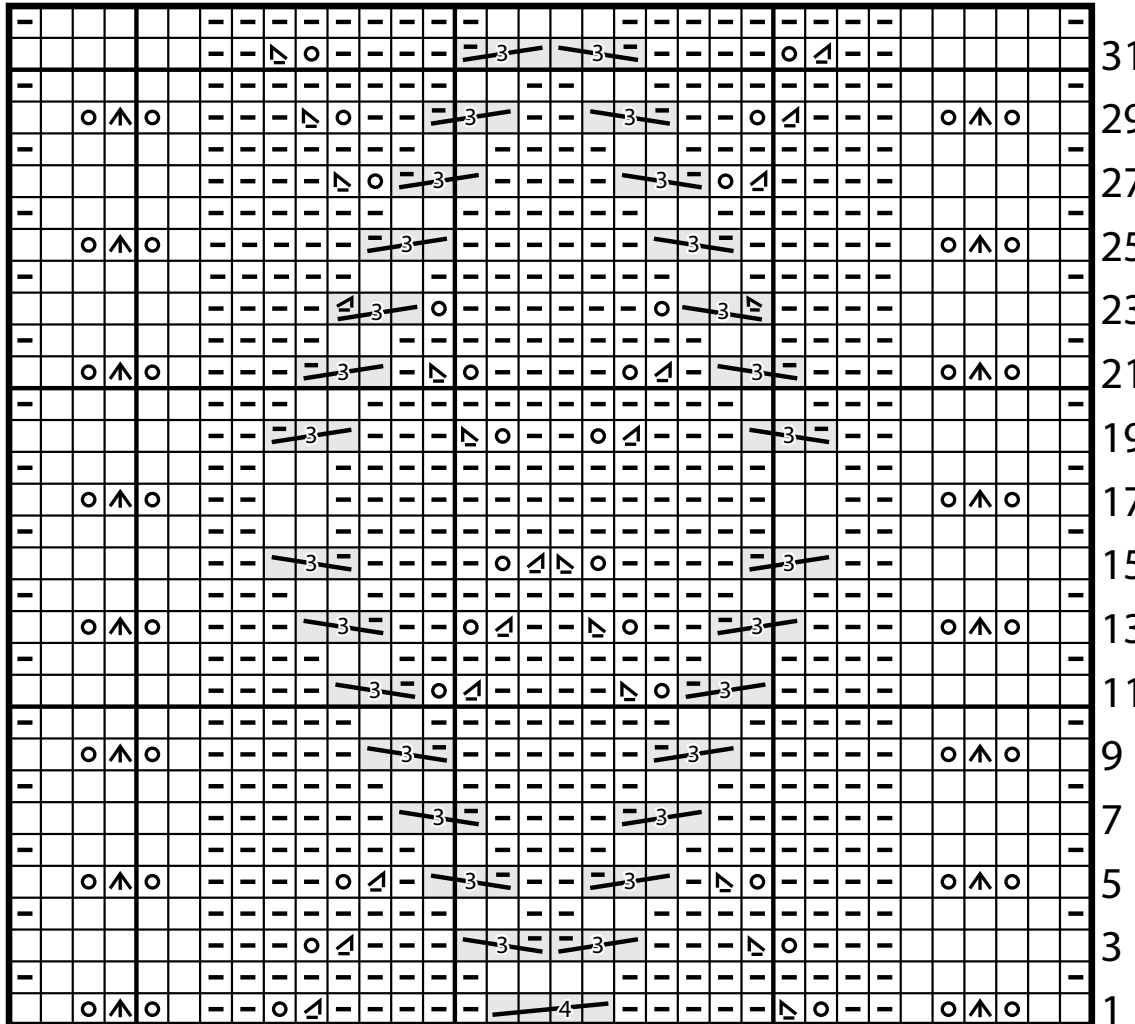
Break B. Join C.

With C, knit 14 rows (garter st), dec 4 sts evenly across first row. 30 sts. Cast off knitwise.

### Fringe

Cut lengths of C 20" [51 cm] long. Taking 3 strands tog, knot into fringe evenly across each end of Scarf. Make a second layer of fringe along last garter st row worked in C across each end of Scarf. Trim fringe evenly.





### Key

- = Knit on RS rows. Purl on WS rows.
- ◻ = Purl on RS rows. Knit on WS rows.
- = Yarn over
- ⋈ = Sl1. K2tog. pss0.
- ◻ = P2tog
- ◻ = P2togtbl
- = T3B
- = T3F
- = T3Bdec
- = T3Fdec
- = C4B

Start Here