

## BERNAT® SIMPLE CABLE KNIT CARDIGAN



KNIT | SKILL LEVEL: INTERMEDIATE

### ABBREVIATIONS

**Approx** = Approximately

**Beg** = Begin(ning)

**C6B** = Slip next 3 stitches onto cable needle and leave at back of work. K3, then K3 from cable needle

**C6F** = Slip next 3 stitches onto cable needle and leave at front of work. K3, then K3 from cable needle

**Cont** = Continue(ity)

**K** = Knit

**K2tog** = Knit next 2 stitches together

**M1L** = Make 1 stitch by picking up horizontal loop lying before next stitch from *front to back* and knitting into back of loop.

**M1R** = Make 1 stitch by picking up horizontal loop lying before next stitch from *back to front* and knitting into front of loop

**P** = Purl

**Pat** = Pattern

**P2tog** = Purl next 2 stitches together

**P2togtbl** = Purl next 2 stitches together through back loops

**PM** = Place marker

**Rem** = Remain(ing)

**Rep** = Repeat

**Rnd(s)** = Round(s)

**RS** = Right side

**SM** = Slip marker

**Ssk** = Slip next 2 stitches one at a time. Pass them back onto left-hand needle, then knit through the back loops together.

**St(s)** = Stitch(es)

**WS** = Wrong side

**Yo** = Yarn over

### MATERIALS

**Bernat® Softee Chunky Tweeds™** (10.5 oz/300 g; 316 yds/289 m)

**Sizes** XS/S M L XL 2/3XL 4/5XL  
Soft Gray Tweed (11004) 3 3 4 4 5 5 balls

Sizes U.S. 10½ (6.5 mm) and U.S. 11 (8 mm) circular knitting needles 29" [73.5 cm] long. Set of 4 sizes U.S. 10½ (6.5 mm) and U.S. 11 (8 mm) double-pointed knitting needles **or sizes needed to obtain gauge.** Cable needle. 2 stitch markers. Stitch holder. 6 buttons.

### SIZES

#### To fit bust measurement

**XS/S** 28-34" [71-86.5 cm]  
**M** 36-38" [91.5-96.5 cm]  
**L** 40-42" [101.5-106.5 cm]  
**XL** 44-46" [112-117 cm]  
**2/3XL** 48-54" [122-137 cm]  
**4/5XL** 56-62" [142-157.5 cm]

#### Finished bust measurement

**XS/S** 37" [94 cm]  
**M** 41½" [105.5 cm]  
**L** 46" [117 cm]  
**XL** 49" [124.5 cm]  
**2/3XL** 57½" [146 cm]  
**4/5XL** 62" [157.5 cm]

## BERNAT® SIMPLE CABLE KNIT CARDIGAN

### GAUGE

11 sts and 14 rows = 4" [10 cm] in stocking st on larger needles.

### INSTRUCTIONS

*The instructions are written for smallest size. If changes are necessary for larger size(s) the instructions will be written thus ( ). Numbers for each size are shown in the same color throughout the pattern. When only one number is given in black, it applies to all sizes.*

**Right Cable Panel** (worked over 8 sts). See chart on page 4.

**1st row:** P1. C6F. P1.

**2nd row:** K1. P6. K1.

**3rd row:** P1. K6. P1.

**4th row:** As 2nd row.

**5th to 8th rows:** Rep 3rd and 4th rows twice.

These 8 rows form Right Cable Panel.

**Left Cable Panel** (worked over 8 sts). See chart on page 4.

**1st row:** P1. C6B. P1.

**2nd row:** K1. P6. K1.

**3rd row:** P1. K6. P1.

**4th row:** As 2nd row.

**5th to 8th rows:** Rep 3rd and 4th rows twice.

These 8 rows form Left Cable Panel.

**Note:** Body is worked in one piece to armholes. Sleeves are worked in the round until the cap shaping, then they are worked back and forth in rows to top.

### BODY

With smaller circular needle, cast on **98** (**110-122-130-154-166**) sts.

**1st row:** (RS). K2. \*P2. K2. Rep from \* across.

**2nd row:** P2. \*K2. P2. Rep from \* across.

Rep last 2 rows (K2. P2) ribbing for 2½" [6.5 cm], ending on a WS row.

Change to larger circular needle and proceed as follows:

**1st row:** K**9** (**9-11-11-12-12**). Work 1st row of Right Cable Panel across next 8 sts. Knit to last **17** (**17-19-19-20-20**) sts. Work 1st row of Left Cable Panel across next 8 sts. K**9** (**9-11-11-12-12**).

**2nd row:** P**9** (**9-11-11-12-12**). Work 2nd row of Left Cable Panel across next 8 sts. Purl to last **17** (**17-19-19-20-20**) sts. Work 2nd row of Right Cable Panel across next 8 sts. P**9** (**9-11-11-12-12**). Cable Panels are now in position. Cont in pat, keeping cont of Cable Panels, until work from beg measures 18½" [42 cm], ending on a WS row.

Keeping cont of Cable Panels, begin front shaping:

**1st row:** (RS). K1. ssk. Pat to last 3 sts. K2tog. K1. **96** (**108-120-128-152-164**) sts.

**2nd row:** Work even in pat.

**Divide for Right Front: 1st row:** K1. ssk. Pat across next **18** (**20-23-24-28-29**) sts. **Turn.** Leave rem sts on spare needle. **20** (**22-25-26-30-31**) sts for Right Front. **Next row:** Work even in pat.

**Sizes XS/S, M, L, XL only:**  
**1st row:** K1. ssk. Pat to last 3 sts. K2tog. K1. **18** (**20-23-24**) sts.  
**2nd row:** Work even in pat.  
**3rd row:** Pat to last 3 sts. K2tog. K1. **17** (**19-22-23**) sts.  
**4th row:** As 2nd row.

**Sizes M, L and XL only:** Rep last 4 rows once more. (**16-19-20**) sts.

**Sizes XS/S, L and XL only: Next row:** K1. ssk. Pat to last 3 sts. K2tog. K1. **15** (**17-18**) sts.

**Sizes 2/3XL and 4/5XL only: 1st row:** K1. ssk. Pat to last 3 sts. K2tog. K1. (**28-29**) sts.

**2nd row:** P1. P2tog. Pat to end of row. (**27-28**) sts.

**3rd row:** Pat to last 3 sts. K2tog. K1. (**26-27**) sts.

**4th row:** P1. P2tog. Pat to end of row. (**25-26**) sts.

**5th row:** As 1st row. (**23-24**) sts.

**6th row:** Work even in pat.

**7th row:** Pat to last 3 sts. K2tog. K1. (**22-23**) sts.

**8th row:** As 6th row.

**9th row:** As 1st row. (**20-21**) sts.

**10th row:** As 6th row.

**Sizes XS/S, L, XL, 2/3XL and 4/5XL only:** Work 2 rows even in pat.

**All Sizes: 1st row:** (RS). K1. ssk. Pat to end of row. **14** (**15-16-17-19-20**) sts.

**2nd to 4th rows:** Work even in pat. Rep last 4 rows until **11** (**12-12-12-13-14**) sts rem.

## BERNAT® SIMPLE CABLE KNIT CARDIGAN

Cont even in pat until armhole measures **8 (8-9-9½-10-10½)"** [**20.5 (20.5-23-24-25.5-26.5)** cm], ending on a RS row.

**Shape shoulder:** Cast off **5 (6-6-6-7-7)** sts at beg of next row.

Purl 1 row.

Cast off rem **6 (6-6-6-6-7)** sts.

**Back:** With larger circular needle, join yarn to next unworked st.

**Next row:** (RS). Cast off **6 (8-8-10-14-16)** sts. K**42 (46-52-54-62-68)** (including rem st on needle after cast off). **Turn.** Leave rem sts on spare needle.

**Next row:** Purl. **42 (46-52-54-62-68)** sts.

**Sizes XS/S, M, L and XL only:**

**1st row:** (RS). K1. ssk. Knit to last 3 sts. K2tog. K1. **40 (44-50-52)** sts.

**2nd row:** Purl.

Rep these 2 rows until **36 (38-42-44)** sts rem, ending on a WS row.

**Sizes 2/3XL and 4/5XL only:**

**1st row:** K1. ssk. Knit to last 3 sts. K2tog. K1. **(60-66)** sts.

**2nd row:** P1. P2tog. Purl to last 3 sts. P2togtbl. P1. **(58-64)** sts.

**3rd row:** As 1st row. **(56-62)** sts.

**4th row:** As 2nd row. **(54-60)** sts.

**5th row:** As 1st row. **(52-58)** sts.

**6th row:** Purl.

**7th row:** As 1st row. **(50-56)** sts.

**8th row:** Purl.

**9th row:** As 1st row. **(48-54)** sts.

**10th row:** Purl.

**All sizes:** Cont even in stocking st until armhole measures **8 (8-9-9½-10-10½)"** [**20.5 (20.5-23-24-25.5-26.5)** cm], ending on a WS row.

**Shape shoulders:** Cast off **5 (6-6-6-7-7)** sts at beg of next 2 rows, then **6 (6-6-6-6-7)** sts at beg of following 2 rows.

Leave rem **14 (14-18-20-22-26)** sts on a st holder.

**Left Front:** With larger circular needle, join yarn to next unworked st.

**1st row:** (RS). Cast off **6 (8-8-10-14-16)** sts. Pat to last 3 sts. K2tog. K1. **20 (22-25-26-30-31)** sts.

**2nd row:** Work even in pat.

**Sizes XS/S, M, L and XL only:**

**1st row:** K1. ssk. Pat to last 3 sts. K2tog. K1. **18 (20-23-24)** sts.

**2nd row:** Work even in pat.

**3rd row:** K1. ssk. Pat to end of row. **17 (19-22-23)** sts.

**4th row:** As 2nd row.

**Sizes M, L and XL only:** Rep last 4 rows once more. **(16-19-20)** sts.

**Size XS/S, L and XL only: Next row:** K1. ssk. Pat to last 3 sts. K2tog. K1. **15 (17-18)** sts.

**Sizes 2/3XL and 4/5XL only:**

**1st row:** K1. ssk. Pat to last 3 sts. K2tog. K1. **(28-29)** sts.

**2nd row:** Pat to last 3 sts. P2togtbl. P1. **(27-28)** sts.

**3rd row:** K1. ssk. Pat to end of row. **(26-27)** sts.

**4th row:** As 2nd row. **(25-26)** sts.

**5th row:** As 1st row. **(23-24)** sts.

**6th row:** Work even in pat.

**7th row:** K1. ssk. Pat to end of row. **(22-23)** sts.

**8th row:** As 6th row.

**9th row:** As 1st row. **(20-21)** sts.

**10th row:** As 6th row.

**Sizes XS/S, L, XL, 2/3XL and 4/5XL only:** Work 2 rows even in pat.

**All Sizes: 1st row:** (RS). Pat to last 3 sts. K2tog. K1. **14 (15-16-17-18)** sts.

**2nd to 4th rows:** Work even in pat. Rep last 4 rows until **11 (12-12-12-13-14)** sts rem.

Cont even in pat until armhole measures **8 (8-9-9½-10-10½)"** [**20.5 (20.5-23-24-25.5-26.5)** cm], ending on a WS row.

**Shape shoulder:** Cast off **5 (6-6-6-7-7)** sts at beg of next row.

Knit 1 row.

Cast off rem **6 (6-6-6-6-7)** sts.

### SLEEVES

With smaller double-pointed needles, cast on **24 (24-28-28-32-32)** sts. Divide sts onto 3 needles and join in rnd, PM on first st.

**1st rnd:** \*K2. P2. Rep from \* around.

Rep last rnd of (K2. P2) ribbing for **2½"** [6.5 cm].

Change to larger set of double-pointed needles and knit 2 rnds.

### Begin Sleeve Increases

**Inc rnd:** K1. M1L. Knit to last st. M1R. K1. **26 (26-30-30-34-34)** sts.

## BERNAT® SIMPLE CABLE KNIT CARDIGAN

Rep inc rnd every following **6th** (5th-5th-4th-4th-3rd) rnd **6** (8-7-9-9-11) times more. **38** (42-44-48-52-56) sts.

Cont even until Sleeve from beg measures **18** (18-17-16½-16½-16)" [**45.5** (45.5-43-42-42-40.5) cm].

**Next rnd:** Knit to last **3** (3-4-5-6-7) sts. Bind off next **6** (6-8-10-12-14) sts. **32** (36-36-38-40-42) sts.

Working back and forth in rows, proceed as follows:

**1st row:** (RS). K1. ssk. Knit to last 3 sts. K2tog. K1. **30** (34-34-36-38-40) sts.

**2nd row:** Purl.

Rep these 2 rows to **18** (18-18-22-22-22) sts, ending on a WS row.

**Next row:** (RS). ssk. Knit to last 2 sts. K2tog.

**Next row:** P2tog. Purl to last 2 sts. P2togtbl.

Rep last 2 rows to 6 sts. Cast off.

### FINISHING

Sew shoulder seams. Sew in Sleeves.

### Button and Buttonhole Band:

With RS facing and smaller circular needle, pick up and knit **72** (72-74-75-78-80) sts up Right Front to shoulder seam. **K14** (14-18-20-22-26) from Back st holder. Pick up and knit **72** (72-74-75-78-80) sts down Left Front edge to cast on edge. **158** (158-166-170-178-186) sts.

**1st row:** (WS). \*P2. K2. Rep from \* to last 2 sts. P2.

**2nd row:** \*K2. P2. Rep from \* to last 2 sts. K2.

**3rd row:** As 1st row.

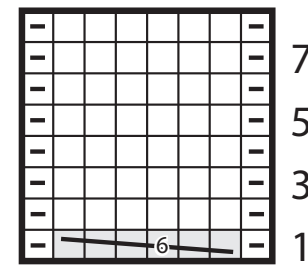
**4th row:** K2. P2tog. yo. (K2. P2. K2. P2tog. yo) 5 times. \*K2. P2. Rep from \* to last 2 sts. K2.

**5th and 6th rows:** As 1st and 2nd rows.

Cast off in ribbing.

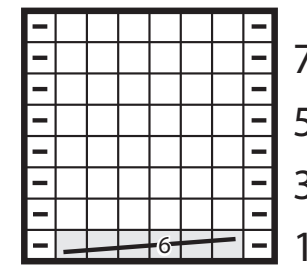
Sew buttons to left side of button band to correspond to buttonholes.

Right Cable Panel



Start Here

Left Cable Panel



Start Here

### Key

□ = Knit on RS rows; Purl on WS rows

◻ = Purl on RS rows; Knit on WS rows

= C6B

= C6F

FRONT



BACK



BERNAT® SIMPLE CABLE KNIT CARDIGAN

