



CROCHET | SKILL LEVEL: INTERMEDIATE

ABBREVIATIONS

Approx =

Approximately

Beg = Beginning

Ch = Chain(s)

Cont = Continuity

Dc = Double crochet

Rem = Remain(ing)

Rep = Repeat

RS = Right side

Sl st = Slip stitch

Sp(s) = Space(s)

MEASUREMENTS

Approx 45" [114.5 cm] square.

GAUGE

6 dc and 3½ rows = 4" [10 cm]

INSTRUCTIONS

Notes:

- Due to thick pile of Bernat® Sheepy™ yarn, you may find it useful to place a safety pin or st marker on RS of work to help keep track.
- Ch 3 at beg of row counts as dc.
- When working from chart, wind small balls of the colors to be used, one for each separate area of color in the design. Start new colors at appropriate points.
- To change color, work to last 2 loops on hook, yoh with new color. Pull through 2 loops on hook to complete st and proceed in new color.

With A, ch 6. (See diagram and chart on page 2).

1st row: (RS). 1 dc in 4th ch from hook. 1 dc in each of next 2 ch. Turn. 1 block made.

2nd row: Ch 6. 1 dc in 4th ch from hook. 1 dc in each of next 2 ch – beg block made. (Sl st. Ch 3. 3 dc) in next ch-3 sp – block made. Turn. 2 blocks.

3rd row: Beg block. (Block in next ch-3 sp) twice. Turn. 3 blocks.

4th row: Beg block. (Block in next ch-3 sp) 3 times. Turn. 4 blocks.

5th row: Beg block. (Block in next ch-3 sp) 4 times. Turn. 5 blocks.

6th row: Beg block. (Block in next ch-3 sp) 5 times. Turn. 6 blocks.

7th row: Beg block. (Block in next ch-3 sp) 6 times. Turn. 7 blocks.

Keeping cont of color changes in Chart (each square on grid represents 1 block), cont in this manner, increasing 1 block each row until there are 28 blocks.

MATERIALS

Bernat® Sheepy™ (8.8 oz/250 g; 149 yds/136 m)

Contrast A Plush Pink (43002)

2 balls

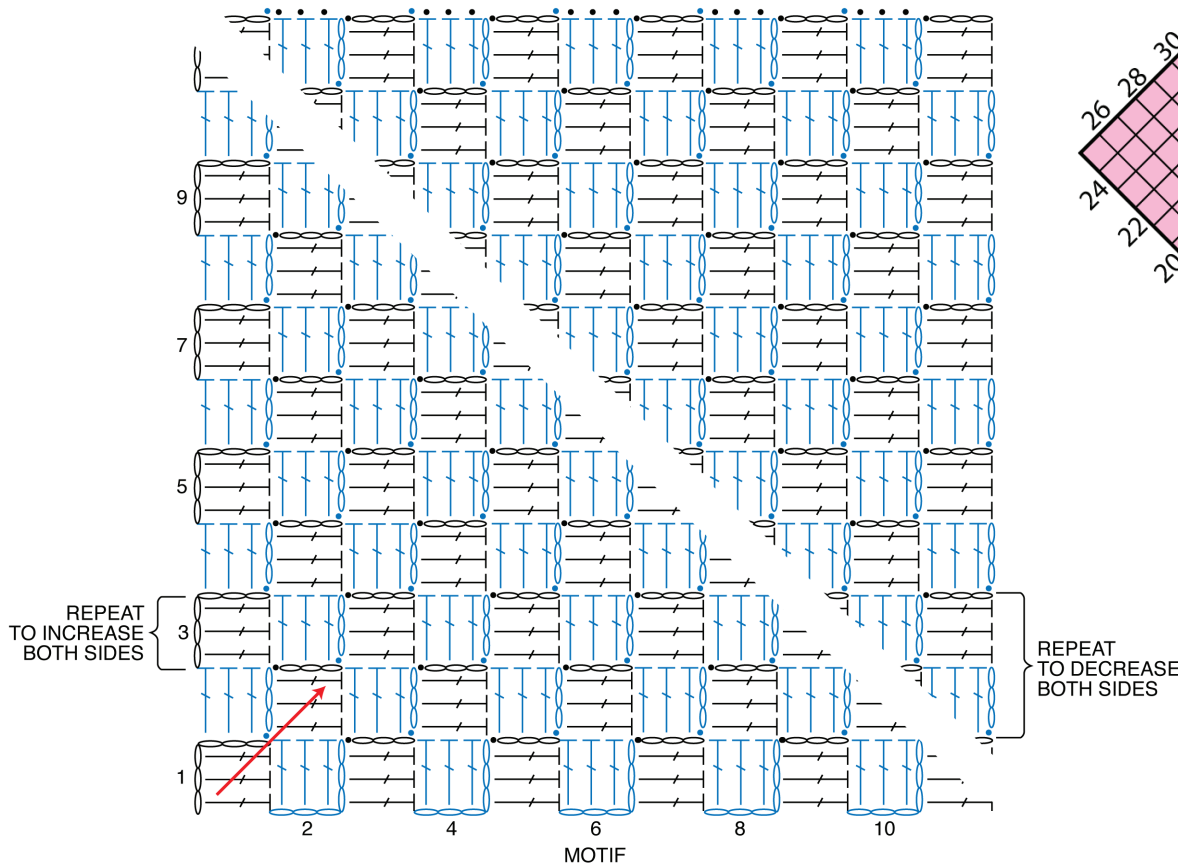
Contrast B Cotton Tail (43001)

2 balls

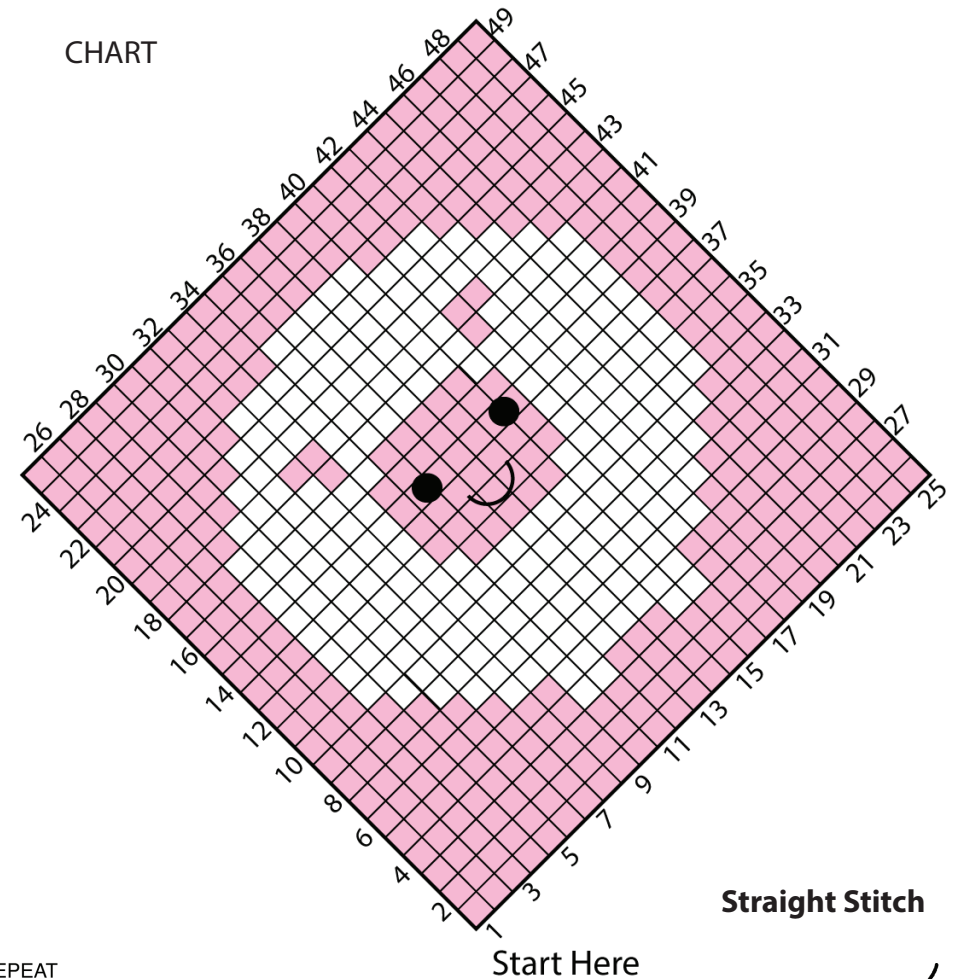
Size U.S. N/15 (10 mm) crochet hook **or size needed to obtain gauge.** Small amount of black bulky weight yarn for face embroidery. Yarn needle.

Begin decreases: Next row: Sl st in each of first 3 dc. *Block in next ch-3 sp. Rep from * to last ch-3 sp. Sl st in last ch-3 sp. (**Do not** make a block). Turn.
 Keeping cont of chart, rep last row until 1 block rem. Fasten off.

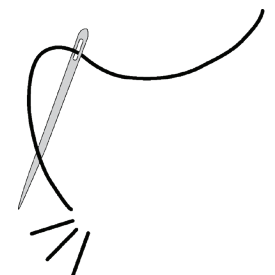
FINISHING
 With Black bulky weight yarn, embroider eyes and mouth on Sheep's face with straight stitch as shown in picture.



CHART



Straight Stitch



- STITCH KEY
- = chain (ch)
 - = slip stitch (sl st)
 - ⌋ = double crochet (dc)