



MATERIALS

Patons® Grace™ (1.75 oz/50 g; 136 yds/125 m)

Size	4	6	8	10
Boat Version				
Main Color (MC) Navy (62110)	5	6	7	8
Contrast A Clay (62044)	1	1	1	1
Contrast B Snow (62005)	1	1	1	1
Fish Version				
Main Color (MC) Blue Bayou (62134)	5	6	7	8
Contrast A Azure (62104)	1	1	1	1
Contrast B Snow (62005)	1	1	1	1

Sizes U.S. 3 (3.25 mm) and U.S. 5 (3.75 mm) knitting needles **or size needed to obtain gauge**. Size U.S. 3 (3.25 mm) circular knitting needle 24" [60 cm] long. 3 stitch holders.

ABBREVIATIONS: www.yarnspirations.com/abbreviations

Beg = Beginning
Cont = Contine(ity)
Dec = Decrease(ing)
Inc = Increase(ing)
K = Knit
K2tog = Knit next 2

stitches together
P = Purl
Pat = Pattern
Psso = Pass slipped stitch over
Rep = Repeat

RS = Right side
Sl1 = Slip next stitch knitwise
St(s) = Stitch(es)
WS = Wrong side
Yo = Yarn over



SIZES

Chest Measurements

4	23"	[58.5 cm]
6	25"	[63.5 cm]
8	27"	[68.5 cm]
10	29"	[73.5 cm]

Finished chest

4	28"	[71 cm]
6	30"	[76 cm]
8	32"	[81.5 cm]
10	34"	[86.5 cm]

GAUGE

24 sts and 32 rows = 4" [10 cm] with larger needles in stocking st.

INSTRUCTIONS

The instructions are written for smallest size. If changes are necessary for larger sizes the instructions will be written thus ().

BACK

**With A and smaller needles, cast on 82 (86-90-98) sts.

1st row: (RS). *K2. P2. Rep from * to last 2 sts. K2.

2nd row: *P2. K2. Rep from * to last 2 sts. P2. Break A.

With MC, rep last 2 rows (K2. P2) ribbing 3 times more (8 rows in all), inc 2 (4-6-4) sts evenly across last row. 84 (90-96-102) sts.

Change to larger needles and proceed in stocking st until work from beg measures 9 (10-11-12)" [23 (25.5-28-30.5) cm] ending with RS facing for next row.

Shape raglans: Cast off 2 sts beg next 2 rows. 80 (86-92-98) sts.

1st row: (RS). K2. K2tog. Knit to last 4 sts. Sl1. K1. psso. K2.

Work 3 rows even.

Rep last 4 rows 1 (2-2-2) time(s) more. 76 (80-86-92) sts.

1st row: (RS). K2. K2tog. Knit to last 4 sts. Sl1. K1. psso. K2.

2nd row: Purl.**

Rep last 2 rows until there are 36 (38-40-42) sts, ending with a purl row. Leave rem sts on a st holder.

FRONT

Work from ** to ** as given for Back.

Rep last 2 rows until there are 70 (74-78-80) sts, ending with a purl row.

Shape placket opening: 1st row: (RS). K2. K2tog. K31 (33-35-36) (placket opening). **Turn.** Leave rem sts on a spare needle.

2nd row: Purl.

3rd row: K2. K2tog. Knit to end of row.

4th row: Purl.

Rep last 2 rows until there are 26 (28-30-31) sts, ending with a purl row.

Shape neck: 1st row: (RS). K2. K2tog. K15 (16-18-18) (neck edge). **Turn.** Leave rem 7 (8-8-9) sts on a safety pin.

2nd row: P2togtbl. Purl to end of row.

3rd row: K2. K2tog. Knit to last 2 sts. Sl1. K1. psso.

Sizes 6, 8 and 10 only: Rep last 2 rows once more.



All Sizes: Next row: Purl.

Next row: K2. K2tog. Knit to last 2 sts. Sl1. K1. pssso.

Rep last 2 rows until there are 5 sts, ending with a purl row.

Next row: K1. K2tog. Sl1. K1. pssso.

Next row: P3.

Next row: K1. K2tog.

Next row: P2.

Next row: K2tog. Fasten off.

With RS of work facing, join MC to rem **35 (37-39-40)** sts.

1st row: Knit to last 4 sts. Sl1. K1. pssso. K2.

2nd row: Purl.

Rep last 2 rows until there are **26 (28-30-31)** sts, ending with a purl row.

Shape neck: 1st row: (RS). **K7 (8-8-9)** (neck edge). Slip these sts onto a safety pin. Knit to last 4 sts. Sl1. K1. pssso. K2.

2nd row: Purl to last 2 sts. P2tog.

3rd row: K2tog. Knit to last 4 sts. Sl1. K1. pssso. K2.

Sizes 6, 8 and 10 only: Rep last 2 rows once more.

All Sizes: Next row: Purl.

Next row: K2tog. Knit to last 4 sts. Sl1. K1. pssso. K2.

Rep last 2 rows until there are 5 sts, ending with a purl row.

Next row: K2tog. Sl1. K1. pssso. K1.

Next row: P3.

Next row: Sl1. K1. pssso. K1.

Next row: P2.

Next row: Sl1. K1. pssso. Fasten off.

SLEEVES

With A and smaller needles cast on **42 (42-46-46)** sts.

Work 2 rows in (K2. P2) ribbing as given for Back. Break A.

With MC, work a further 6 rows in (K2. P2) ribbing, inc **4 (6-4-6)** sts evenly across last row. **46 (48-50-52)** sts.

Change to larger needles and proceed in stocking st inc 1 st each end of needle on 7th and following 6th rows until there are **68 (74-78-84)** sts.

Cont even until work from beg measures **10½ (12½-14-16½)" [26.5 (32-35.5-42) cm]** ending with RS facing for next row.

Shape raglans: Cast off 2 sts beg next 2 rows. **64 (70-74-80)** sts.

1st row: K2. K2tog. Knit to last 4 sts. Sl1. K1. pssso. K2.

2nd row: P2. P2togtbl. Purl to last 4 sts. P2tog. P2.

3rd row: As 1st row.

4th row: Purl.

Rep last 4 rows **1 (2-1-2)** time(s) more. **52 (52-62-62)** sts.

1st row: K2. K2tog. Knit to last 4 sts. Sl1. K1. pssso. K2.

2nd row: Purl.

Rep last 2 rows until there are **10 (10-12-12)** sts, ending with a purl row. Leave rem sts on a st holder.

KANGAROO POCKET

Note: When working from chart, wind small balls of the colors to be used, one for each separate area of color in the design. Start new colors at appropriate points. To change colors, twist the two colors around each other where they meet, on WS, to avoid a hole. Work small areas of color in duplicate stitch.

With MC and larger needles, cast on **59 (59-65-65)** sts.

Work Chart I or II in stocking st to end of chart reading **knit** rows from **right** to left and **purl** rows from **left** to right, noting dec rows will be worked as follows: K2. K2tog. Knit to last 4 sts. Sl1. K1. pssso. K2. Cast off rem **31 (31-33-33)** sts. Charts I and II are shown on pages 4 and 5.

Neck Edging: Sew raglan seams. With RS of work facing, circular needle and MC, **K7 (8-8-9)** from Right Front safety pin. Pick up and knit **12 (12-14-14)** sts up Right Front neck edge. **K10 (10-12-12)** from right sleeve st holder, dec 2 sts evenly across. **K36 (38-40-42)** from Back st holder, dec 4 sts evenly across. **K10 (10-12-12)** from left sleeve st holder, dec 2 sts evenly across. Pick up and knit **12 (12-14-14)** sts down Left Front neck edge. **K7 (8-8-9)** from Left Front safety pin. **86 (90-100-104)** sts. **Do not** join. Working back and forth across needle in rows, proceed as follows:

Next row: (WS). Knit.

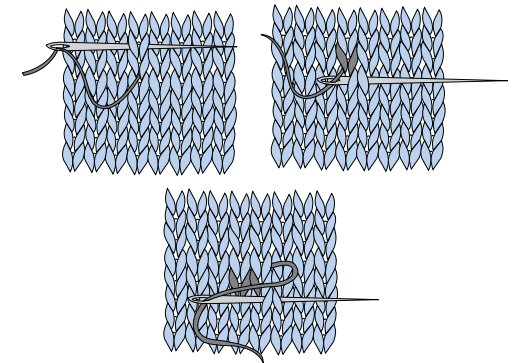
With B, knit 2 rows.

With A, knit 2 rows. Cast off.

Placket Edging: With RS of work facing, smaller needles and MC, pick up and knit 36 sts evenly around Placket opening (including sides of neck edging). Cast off knitwise (WS).

Sew Pocket in position to Front as illustrated. Sew side and sleeve seams.

Duplicate Stitch Diagram



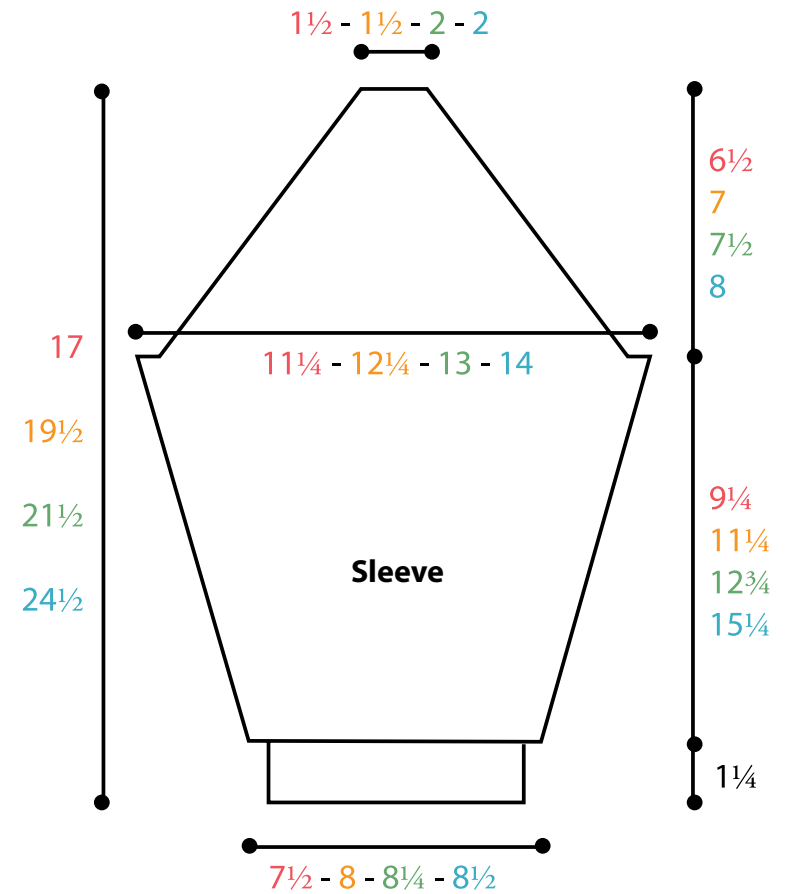
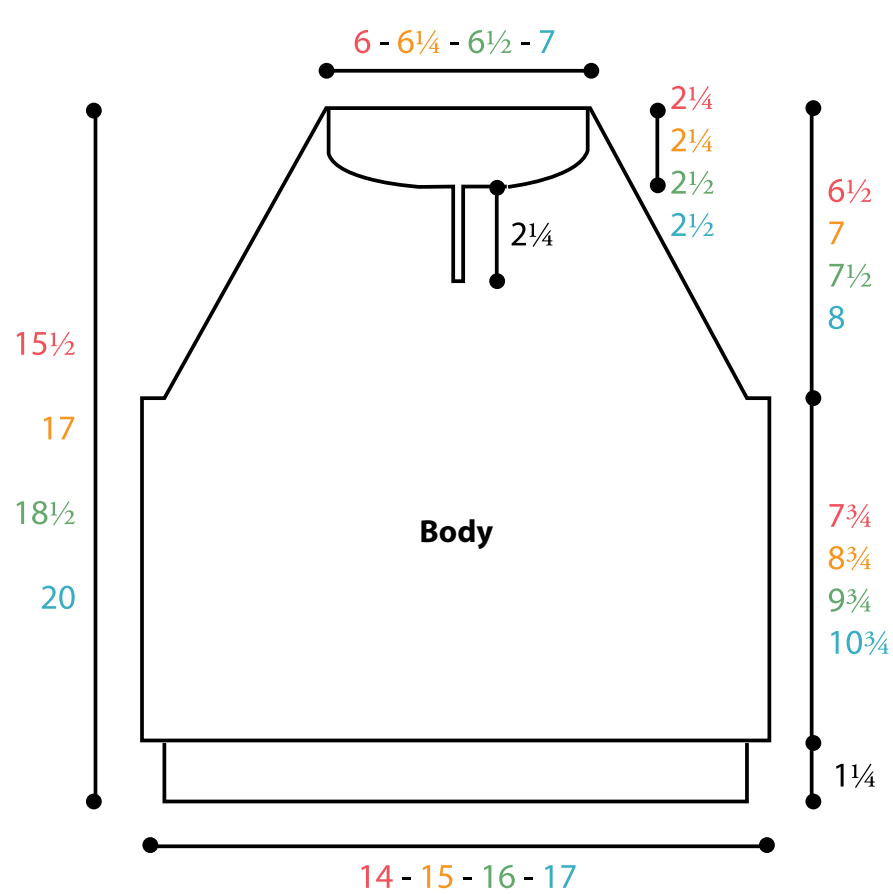



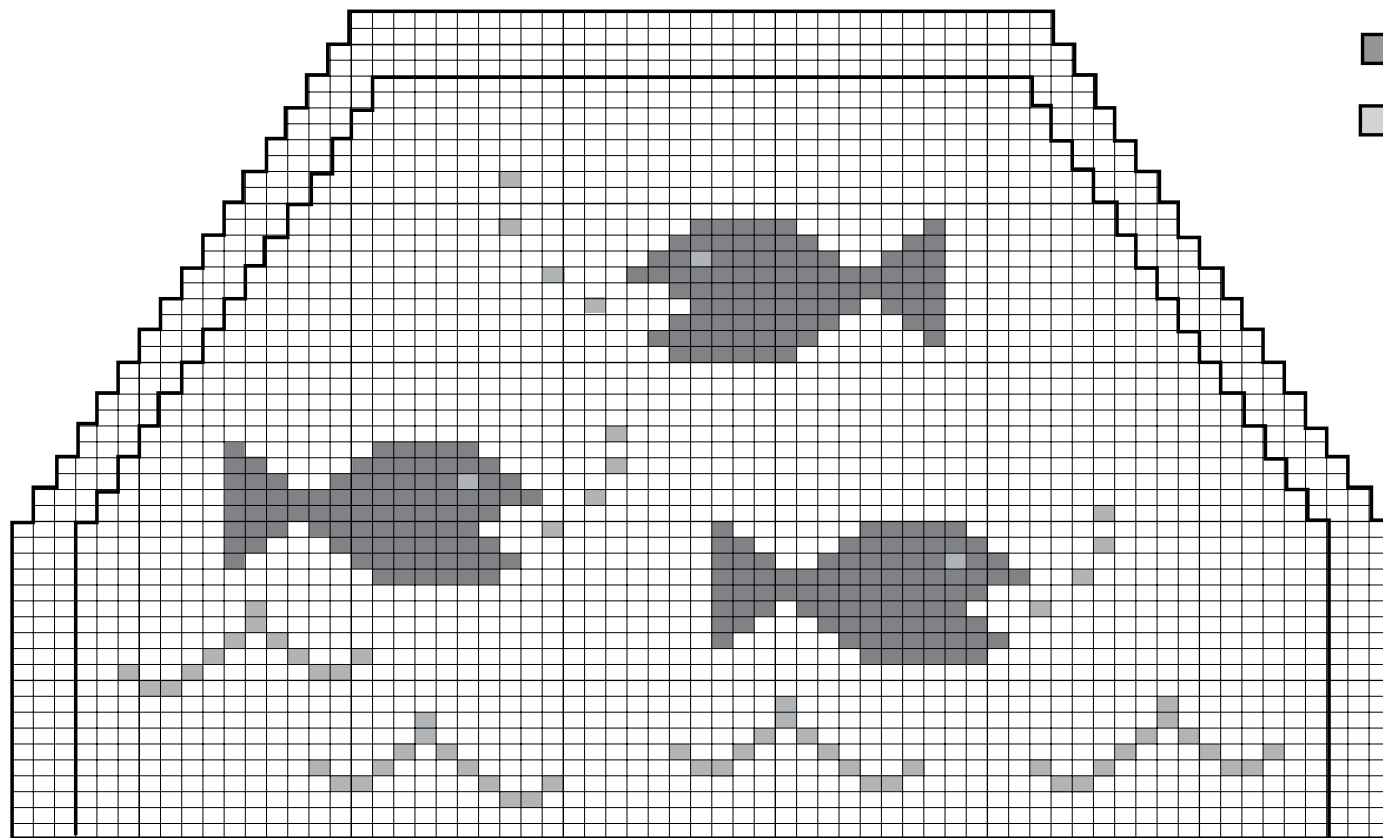




Chart I

- Key
-  = MC
 -  = Contrast A
 -  = Contrast B



8 4
10 6

4 8
6 10
Start Here

