



CROCHET
SKILL LEVEL
EASY

Designed by J. Erin Boland



What you will need:

RED HEART® Super Saver:
1 skein each of 400 Grey Heather
A, 3945 Blue Suede B, 347 Light
Periwinkle C

Susan Bates® Crochet Hooks:
5.00mm [US H-8]

Yarn Needle, Black Wooden Purse
Handles

GAUGE: 14 sts and 15 rows in ssc
pattern = 4" (10 cm). **CHECK
YOUR GAUGE.** Use any size
needles/hook to obtain the gauge
given.



**RED HEART® Super
Saver®**, Art. E300
available in solid color
7 oz (198 g), 364 yd (333 m);
multicolor, heather and print 5 oz
(141 g), 244 yd (223 m), flecks 5 oz
(141 g), 260 yds (238 m) skeins

Urban Squares Purse

*Combine mod retro squares and long
wearing yarn for a crocheted purse that
is very today. Choose any three of the
many colors of this yarn for a totally unique
accessory.*

Finished Measurement: 13" (33 cm) wide x
8½" (21.5 cm) tall

NOTE

Short Single Crochet (ssc): Sc in center (in
center of v) of next sc.

PATTERN

With **A**, ch 38.

Round 1 (right side): Sc in 2nd ch from
hook and in each ch across to last ch, 3 sc
in last ch, working across opposite side of
foundation, sc in each ch across to last chain,
(sc, hdc) in last ch, do not join, work in a
spiral—76 sts. Place marker in last hdc.

Row 2: 2 ssc in next st, ssc in each of next 35
sts, 2 ssc in next st, 3 ssc in next st, 2 ssc in
next st, ssc in each st across to last 2 sts, 2
ssc in next st, 3 ssc in last st. Move marker to
center st of last 3 ssc group—84 sts.

Row 3: Ssc in each st across to next 3-ssc
group, 2 ssc in next st, ssc in next st, 2 ssc
in next st, ssc in each st across to last 3 ssc
group, 2 ssc in next st, ssc in next st, 2 ssc in
next st, sl st in next st. Fasten off. Weave in
ends. Move marker up to ssc between last two
2-ssc groups—88 sts.

Row 4: With right side facing, join yarn with
sl st in st with marker, ch 1, ssc in each st
around to last st, hdc in last st, do not join,
work in a spiral. Place marker in last hdc.

Row 5-8: Ssc in each st around, moving
marker up each round.

Move Marker back one st.

Row 9: With **A**, ssc in each of next 11 sts,
change to **B**, *with **B**, ssc in each of next 11
sts, change to **A****, with **A**, ssc in each of
next 11 sts, change to **B**; repeat * around,
ending last repeat at **—4 sections of 11 **A**
sts; 4 sections of 11 **B** sts. First row of Chart
complete.

Rows 10-30: Work in ssc following Chart for
color changes. Work following Chart from **A** to
B; repeat from **A** to **B** around.

Row 31-33: With **A**, ssc in each st around; join
with a slip st in first ssc. Fasten off. Weave in
ends.

FINISHING

With yarn needle and yarn, sew handles to
bag making sure the handles are centered on
the front and back of bag.

ABBREVIATIONS

A, B, C = Color A, B, C; **ch** = chain; **dc** =
double crochet; **sc** = single crochet; **ssc** =
short single crochet; **st(s)** = stitch(es); **()** =
work directions in parentheses into same st;
[] = work directions in brackets the number
of times specified; * **or** ** = repeat whatever
follows the * or ** as indicated.

See Chart on next page.

SHOP KIT

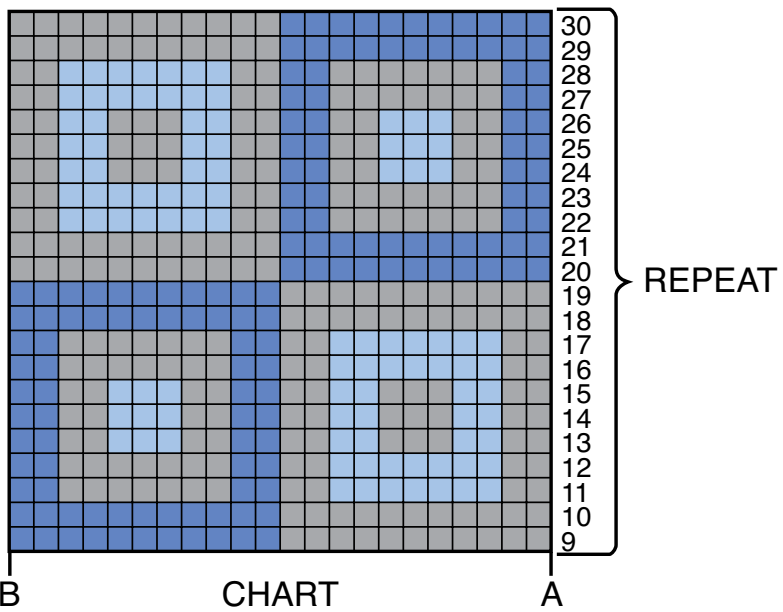


CHART KEY

- = ssc in A
- = ssc in B
- = ssc in C

