



KNIT | SKILL LEVEL: EASY

ABBREVIATIONS

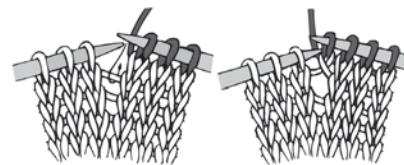
Alt = Alternate

Approx = Approximately

Beg = Begin(ning)

Cont = Continue(ity)

M1 = Make 1 stitch by picking up horizontal loop lying before next stitch from back to front and knitting into front of loop



K2tog = Knit next 2 stitches together

Rem = Remain(ing)

Rep = Repeat

RS = Right side

Ssk = Slip next 2 stitches knitwise one at a time. Pass them back onto left-hand needle, then knit through back loops together

St(s) = Stitch(es)

Tog = Together

WS = Wrong side

MATERIALS

Bernat® Baby Blanket™ (10.5 oz/300 g; 220 yds/201 m)

Main Color (MC) Mushroom (45020) **1 ball or 135 yds/123.5 m**

Contrast A Strawberry Sprinkles (45017) **1 ball or 70 yds/64 m**

Size U.S. 10½ (6.5 mm) circular knitting needle 29" [73.5 cm] long
or size needed to obtain gauge. Yarn needle. Stuffing. Small quantity of black bulky yarn for embroidery.

MEASUREMENTS

Approx 15" x 20" [38 x 51 cm].

GAUGE

10 sts and 15 rows = 4" [10 cm] in stocking st.

INSTRUCTIONS

Note: When working from chart, wind small balls of the colors to be used, one for each separate area of color in the design. To change colors, wind the 2 colors around each where they meet, on WS, to avoid a hole.

FRONT and BACK (make 2 pieces alike)

With MC, cast on 42 sts.

1st row: (RS). Knit.

2nd and alt rows: Purl.

3rd row: K1. M1. Knit to last 2 sts. M1. K1. 44 sts.

5th, 7th, and 9th rows: As 3rd row. 50 sts.

Beg on a purl row, cont in stocking st for 5 more rows.

1st row: (RS). Knit 1st row of chart, reading row from right to left.
2nd row: Purl 2nd row of chart, reading row from left to right.

Keeping cont of chart, work even until chart is complete.

Beg shaping as follows:

1st row: K1. ssk. Knit to last 3 sts. K2tog. K1. 48 sts.

2nd and alt rows: Purl.

3rd, 5th, and 7th rows: As 1st row. 42 sts.

8th row: Purl.

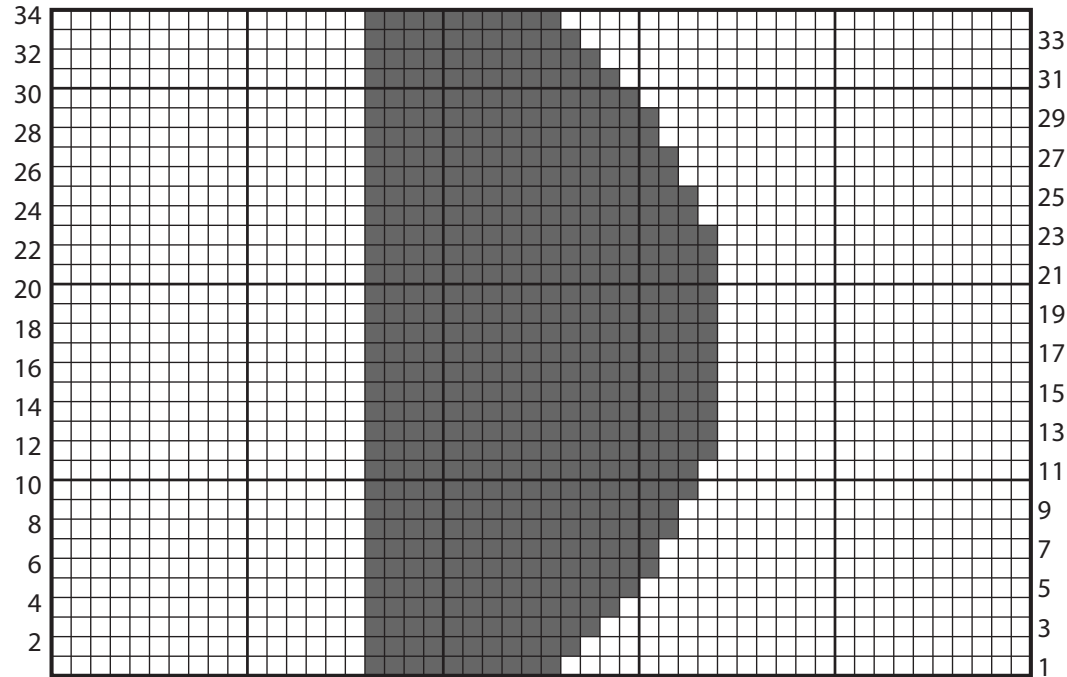
9th row: Knit.

Cast off knitwise.

FINISHING

Rotate Back piece so cast off edge becomes lower edge. With WS facing each other, sew Front and Back tog, leaving a small space open for stuffing. Stuff Pillow. Sew rem seam closed. With black yarn, embroider Eyes using chain stitch as shown in photo. With black yarn, outline "Trunk" as shown in photo using chain st, working through all thicknesses. With A, outline "Ear" as shown in photo using chain st, working through all thicknesses.

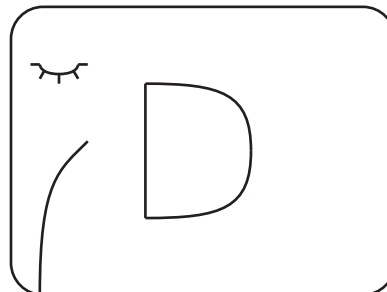
CHART



Key
 □ = MC
 ■ = A

Start here

CHAIN STITCH DIAGRAM



CHAIN STITCH

