



MATERIALS

Sugar Bush® Cabot™ (3.5 oz/100 g; 291 yds/266 m)

Sizes	S	M	L	XL	2XL	
Mango (9011)	3	3	4	4	5	balls

Size U.S. 6 (4 mm) knitting needles **or size needed to obtain gauge.**
Stitch marker.



KNIT | SKILL LEVEL: **INTERMEDIATE**

ABBREVIATIONS

Alt = Alternate

Approx = Approximately

Beg = Begin(ing)

Cont = Continue

Dec = Decreas(e)(ing)

Inc = Inceas(e)(ing)

K = Knit

K2(3)tog = Knit next 2(3) stitches together

P = Purl

P2tog = Purl next 2 stitches together

P2togtbl = Purl next 2 stitches together through back loops

Pat = Pattern

PM = Place marker

Rem = Remain(ing)

Rep = Repeat

RS = Right side

SM = Slip marker

Ssk = Slip next 2 stitches one at a time. Pass them back onto left-hand needle, then knit through the back loops together.

Ss3k = Slip next 3 stitches one at a time. Pass them back onto left-hand needle, then knit through the back loops together.

St(s) = Stitch(es)

WS = Wrong side

Yo = yarn over

SIZES

To fit bust measurement

S 28-34" [71-86.5 cm]

M 36-38" [91.5-96.5 cm]

L 40-42" [101.5-106.5 cm]

XL 44-46" [112-117 cm]

2XL 48-50" [122-127 cm]

GAUGE

22 sts and 30 rows = 4" [10 cm] in stocking st.

INSTRUCTIONS

The instructions are written for smallest size. If changes are necessary for larger size(s) the instructions will be written thus (). Numbers for each size are shown in the same color throughout the pattern. When only one number is given in black, it applies to all sizes.

SUGAR BUSH SUNSET SLEEVELESS KNIT TUNIC | KNIT

BACK

Cast on **114 (**130-130-146-162**) sts.

1st row: (RS). K1. *ssk. K5. yo. K2. yo. K5. K2tog. Rep from * to last st. K1.

2nd row: P2. *K6. P2. Rep from * to end of row.

Rep last 2 rows for Border pat until work from beg measures approx 1½" [4 cm], ending on a WS row.

Proceed in Santorini Pat as follows:

1st row: (RS). K1. *K1. yo. ssk. K3. yo. ssk. K2tog. yo. K3. K2tog. yo. K1. Rep from * to last st. K1.

2nd and alt rows: Purl.

3rd row: K1. *K2. yo. ssk. K2. yo. ssk. K2tog. yo. K2. K2tog. yo. K2. Rep from * to last st. K1.

5th row: K1. *K3. yo. ss3k. yo. K4. yo. K3tog. yo. K3. Rep from * to last st. K1.

7th row: K1. *K3. K2tog. yo. K1. yo. ssk. K2tog. yo. K1. yo. ssk. K3. Rep from * to last st. K1.

9th row: K1. *K2. K2tog. yo. K2. yo. ssk. K2tog. yo. K2. yo. ssk. K2. Rep from * to last st. K1.

11th row: K1. *K1. K2tog. yo. K3. yo. ssk. K2tog. yo. K3. yo. ssk. K1. Rep from * to last st. K1.

13th row: K1. *K2tog. yo. K4. yo. ssk. K2tog. yo. K4. yo. ssk. Rep from * to last st. K1.

15th row: K1. *K2tog. yo. K3. K2tog. yo. K2. yo. ssk. K3. yo. ssk. Rep from * to last st. K1.

17th row: K1. *K2tog. yo. K2. K2tog. yo. K4. yo. ssk. K2. yo. ssk. Rep from * to last st. K1.

19th row: K1. *K2. yo. K3tog. yo. K6. yo. ss3k. yo. K2. Rep from * to last st. K1.

21st row: K1. *K2tog. yo. K1. yo. ssk. K6. K2tog. yo. K1. yo. ssk. Rep from * to last st. K1.

23rd row: K1. *K2tog. yo. K2. yo. ssk. K4. K2tog. yo. K2. yo. ssk. Rep from * to last st. K1.

25th row: K1. *K2tog. yo. K3. yo. ssk. K2. K2tog. yo. K3. yo. ssk. Rep from * to last st. K1.

27th row: K1. *K2tog. yo. K4. yo. ssk. K2tog. yo. K4. yo. ssk. Rep from * to last st. K1.

28th row: As 2nd row.
Rep 1st to 28th rows for Santorini Pat until work from beg measures approx 13½" [34.5 cm], ending on a WS row.

Next row: (RS). Knit, dec **14** (**24-12-18-20**) sts evenly spaced across. **100** (**106-118-128-142**) sts rem.

Beg with a purl row, proceed in stocking st until work from beg measures approx 17" [43 cm], ending on a purl row.**

Shape armholes: Cast off **5** (**5-6-7-7**) sts beg of next 2 rows. **90** (**96-106-114-128**) sts.

Next row: (RS). K1. ssk. Knit to last 3 sts. K2tog. K1.

Next row: P1. P2tog. Purl to last 3 sts. P2togtbl. P1.

Rep last 2 rows **2** (**2-4-6-8**) time(s) more. **78** (**84-86-86-92**) sts.

Next row: (RS). K1. ssk. Knit to last 3 sts. K2tog. K1.

Next row: Purl.
Rep last 2 rows **5** (**5-3-1-1**) time(s) more. **66** (**72-78-82-88**) sts.

Cont even until work from beg measures approx **24** (**24-24½-25-25½**)" [**61** (**61-62-63.5-65**) cm], ending on a purl row.

Shape neck: 1st row: (RS). K**15** (**18-21-23-26**). **Turn.** Leave rem sts on a spare needle.

2nd row: Purl.

3rd row: Knit to last 3 sts. K2tog. K1. **14** (**17-20-22-25**) sts.

Beg with purl row, work 3 rows even in stocking st.

Shape shoulders: Cast off **5** (**6-7-7-8**) sts beg of next and following alt row. Work 1 row even. Cast off rem **4** (**5-6-8-9**) sts.

With RS facing, join yarn to rem sts. Cast off next 36 sts. Knit to end of row.

2nd row: Purl.

3rd row: K1. ssk. Knit to end of row. **14** (**17-20-22-25**) sts.

Beg with purl row, work 2 rows even in stocking st.

Shape shoulders: Cast off **5** (**6-7-7-8**) sts beg of next and following alt row. Work 1 row even. Cast off rem **4** (**5-6-8-9**) sts.

FRONT

Work from ** to ** as given for Back.

Work armhole shaping as given for Back until work measures approx **18 (18-18½-19-19½)" [45.5 (45.5-47-48-49.5) cm]**, ending on a purl row.

PM between 2 center sts.

Shape neck: Keeping cont of armhole shaping, AT THE SAME TIME, work neck shaping as follows:

1st row: (RS). Pat to 3 sts before marker. K2tog. K1. **Turn.** Leave rem sts on a spare needle.

2nd row: Purl, keeping armhole shaping.

3rd row: Pat to last 3 sts. K2tog. K1. Rep last 2 rows 8 times more, then 2nd row once.

1st row: (RS). Pat to last 3 sts. K2tog. K1.

2nd row: Purl, keeping armhole shaping.

3rd row: Knit, keeping armhole shaping.

4th row: As 2nd row. Rep last 4 rows 6 times more.

Cont even until armhole measures same length as Back to shoulder shaping, ending on a purl row.

Shape shoulders: Cast off **5 (6-7-7-8)** sts beg of next and following alt row. Work 1 row even. Cast off rem **4 (5-6-8-9)** sts.

With RS facing, join yarn to rem sts.

Shape neck: Keeping cont of armhole shaping, AT THE SAME TIME, work neck shaping as follows:

1st row: (RS). K1. ssk. Pat to end of row.

2nd row: Purl, keeping armhole shaping. Rep last 2 rows 9 times more.

1st row: (RS). K1. ssk. Pat to end of row.

2nd row: Purl, keeping armhole shaping.

3rd row: Knit, keeping armhole shaping.

4th row: As 2nd row. Rep last 4 rows 5 times more.

Cont even until armhole measures same length as Back to shoulder shaping, ending on a knit row.

Shape shoulders: Cast off **5 (6-7-7-8)** sts beg of next and following alt row. Work 1 row even. Cast off rem **4 (5-6-8-9)** sts.

FINISHING

Pin garment pieces to measurements. Cover with a damp cloth leaving cloth to dry. Sew left shoulder seam.

Neckband: With RS facing, pick up and knit 133 sts along the neck edge.

Purl 1 row.

Knit 1 row.

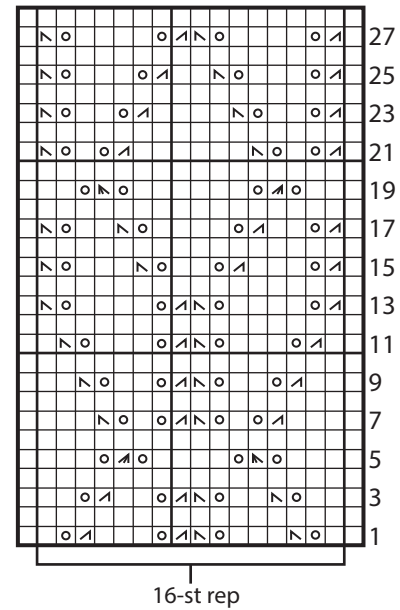
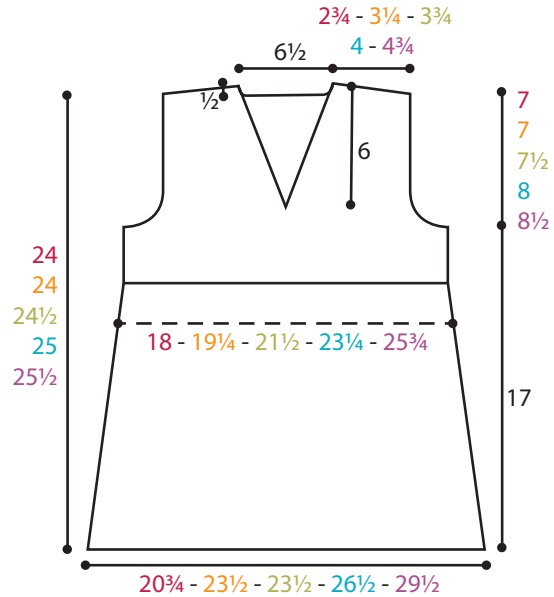
Cast off knit-wise (WS).

Sew right shoulder seam and neckband.

Armhole bands: With RS facing, pick up and knit **90 (90-96-102-108)** sts along armhole.

Work as given for Neckband.

Sew side seams.



Key

- = Knit on RS rows. Purl on WS rows.
- ⊙ = yo
- ↖ = ssk
- ⊠ = K2tog
- ⊡ = ss3k
- ⊢ = K3tog