



**MATERIALS**

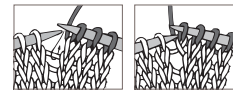
Patons® Canadiana™ (3.5 oz/100 g; 205 yds/187 m)

Sizes	A	B	C	D	E	
<b>Toque and Mittens Set</b>						
<b>Main Color (MC)</b> Cardinal (10707)	1	1	1	2	2	ball(s)
<b>Contrast A</b> Winter White (10006)	1	1	1	1	1	ball

Sizes U.S. 5 (3.75 mm) and U.S. 7 (4.5 mm) knitting needles **or size needed to obtain gauge.**

**ABBREVIATIONS:** [yarnspirations.com/abbreviations](http://yarnspirations.com/abbreviations)

- Alt** = Alternate(ing)
- Approx** = Approximate(ly)
- Beg** = Begin(ning)
- Cont** = Continue
- Dec** = Decrease(ing)
- Inc** = Increase(ing)
- K** = Knit
- K2tog** = Knit next 2 stitches together
- M1** = Make 1 stitch by picking up horizontal loop lying before next stitch and knitting into back of loop



- P** = Purl
- Pat** = Pattern
- PM** = Place marker
- Rem** = Remain(ing)
- Rep** = Repeat
- RS** = Right side
- Ssk** = Slip next 2 stitches knitwise one at a time. Pass them back onto left-hand needle, then knit through back loops together
- St(s)** = Stitch(es)
- WS** = Wrong side



**SIZES**

**Toque: To fit head size**

- A (4/6)** 19" [48 cm]
- B (8)** 20" [51 cm]
- C (10)** 21" [53 cm]
- D (Ladies)** 22" [56 cm]
- E (Men)** 23" [58 cm]

**Mitten: Width around palm of hand**

- A (4/6)** 4½" [11 cm]
- B (8)** 5½" [14 cm]
- C (10)** 6½" [17 cm]
- D (Ladies)** 7½" [19 cm]
- E (Men)** 8½" [22 cm]

**GAUGE**

20 sts and 26 rows = 4" [10 cm] in stocking stitch with larger needles.

**INSTRUCTIONS**

The instructions are written for smallest size. If changes are necessary for larger sizes the instructions will be written thus ( ). When only one number is given, it applies to all sizes. For ease in working, circle all numbers pertaining to your size.



**Note:** When working Chart I or II in Fair Isle technique, carry color not in use loosely across WS of work but never over more than 5 sts. When it must pass over more than 5 sts, weave it loosely over and under color in use on WS.

Work Maple Leaf Motif Chart using intarsia technique. When working from chart, wind small balls of the colors to be used, one for each separate area of color in the design. Start new colors at appropriate points. To change colors, twist the two colors around each other where they meet, on WS, to avoid a hole.

## TOQUE

With A and smaller needles, cast on **95 (101-107-113-117)** sts.

**1st row:** (RS). K1. \*P1. K1. Rep from \* to end of row.

**2nd row:** With MC, purl.

**3rd row:** With MC, as 1st row.

**4th row:** With A, purl.

**5th row:** As 1st row.

**6th row:** P1. \*K1. P1. Rep from \* to end of row.

Rep last 2 rows **3 (3-4-5-5)** times more, then 5th row once.

**Next row:** With MC, purl.

**Next row:** With MC, as 1st row.

**Next row:** With A, purl.

**Next row:** K1. \*P1. K1. Rep from \* to end of row.

**Next row:** (Fold line). Knit.

**Next row:** K1. \*P1. K1. Rep from \* to end of row.

**Next row:** P1. \*K1. P1. Rep from \* to end of row.

Rep last 2 rows **5 (5-6-7-7)** times more.

**Next row:** K1. \*P1. K1. Rep from \* to end of row.

Change to larger needles and work Chart I in stocking st to end of chart, reading **knit** rows from **right** to left and **purl** rows from **left** to right. Break A. See Chart I on page 4.

**Shape top: 1st row:** (RS). K**3 (1-4-2-4)**. [ssk. K**7 (8-8-9-9)**] 10 times. K**2 (0-3-1-3)**. **85 (91-97-103-107)** sts.

**2nd and alt rows:** Purl.

**3rd row:** K**3 (1-4-2-4)**. [ssk. K**6 (7-7-8-8)**] 10 times. K**2 (0-3-1-3)**.

**75 (81-87-93-97)** sts.

**5th row:** K**3 (1-4-2-4)**. [ssk. K**5 (6-6-7-7)**] 10 times. K**2 (0-3-1-3)**.

**65 (71-77-83-87)** sts.

**7th row:** K**3 (1-4-2-4)**. [ssk. K**4 (5-5-6-6)**] 10 times. K**2 (0-3-1-3)**. **55 (61-67-73-77)** sts.

**9th row:** K**3 (1-4-2-4)**. [ssk. K**3 (4-4-5-5)**] 10 times. K**2 (0-3-1-3)**.

**45 (51-57-63-67)** sts.

**11th row:** K**3 (1-4-2-4)**. [ssk. K**2 (3-3-4-4)**] 10 times. K**2 (0-3-1-3)**.

**35 (41-47-53-57)** sts.

**13th row:** K**3 (1-4-2-4)**. [ssk. K**1 (2-2-3-3)**] 10 times. K**2 (0-3-1-3)**.

**25 (31-37-43-47)** sts.

**14th row:** Purl.

**Sizes B, C, D and E only: Next row:** (RS). K**(1-4-2-4)**. [ssk. K**(1-1-2-2)**] 10 times. K**(0-3-1-3)**. **(21-27-33-37)** sts.

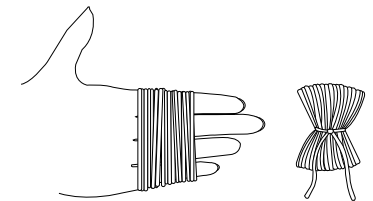
**Next row:** Purl.

**Sizes D and E only: Next row:** (RS). K**(2-1)**. (ssk. K1) **(10-12)** times. K**(1-0)**. **(23-25)** sts.

**Next row:** Purl.

**All sizes:** Break MC, leaving a long end. Thread end through rem sts. Draw up and fasten securely. Sew seam, reversing for cuff turn back at fold line.

**Pompom:** Wind A around 4 fingers 90 times. Tie tightly in the middle and leave a long end. Cut loops at both ends and trim to form pompom. Sew to top of Toque.



## MITTENS

### Right Mitten

\*\*With A and smaller needles, cast on **29 (33-37-41-45)** sts.

**1st row:** (RS). K1. \*P1. K1. Rep from \* to end of row.

**2nd row:** With MC, purl.

**3rd row:** With MC, as 1st row.

**4th row:** With A, purl.

**5th row:** As 1st row.

**6th row:** P1. \*K1. P1. Rep from \* to end of row.

Rep last 2 rows **5 (5-7-9-9)** times more, then 5th row once.

**Next row:** With MC, purl.

**Next row:** With MC, as 1st row.

**Next row:** With A, purl.

**Next row:** As 1st row.

**Next row:** As 6th row. Break A.



Change to MC, larger needles and work **4 (4-6-8-10)** rows in stocking st.\*\*

**Thumb gusset: 1st row:** (RS). **K15 (17-19-21-23)**. M1. K2. M1. Knit to end of row.

**2nd and alt rows:** Purl.

**3rd row:** **K15 (17-19-21-23)**. M1. K4. M1. Knit to end of row.

**5th row:** **K15 (17-19-21-23)**. M1. K6. M1. Knit to end of row.

Cont inc in this manner, having 2 sts more between incs for thumb gusset every following alt row to **37 (41-47-53-57)** sts.

Purl 1 row.

**To make Thumb: K25 (27-31-35-37)**. **Turn.** Cast on 1 st. **P11 (11-13-15-15)**, including cast on st. **Turn.** Cast on 1 st.

\*\*\*Working on these **12 (12-14-16-16)** sts, cont even in stocking st for **1 (1¼-1½-1¾-2)" [2.5 (3-4-4.5-5) cm]**, ending on a purl row.

**Next row:** \*K2tog. Rep from \* to end of row. Break yarn. Thread yarn through rem **6 (6-7-8-8)** sts. Pull tightly and fasten securely. Sew thumb seam.

With RS facing, join yarn to last st on right-hand needle. Pick up and knit 2 sts at base of thumb. Knit to end of row. **29 (33-37-41-45)** sts.

**Next row:** Purl.

Cont even in stocking st until work from last row of ribbing measures **3½ (3½-4½-5-5½)" [9 (9-11.5-12.5-14) cm]**, ending on a purl row.

**Shape top: 1st row:** (RS). [K1. ssk. **K9 (11-13-15-17)**. K2tog] twice. K1.

**2nd and alt rows:** Purl.

**3rd row:** [K1. ssk. **K7 (9-11-13-15)**. K2tog] twice. K1.

**5th row:** [K1. ssk. **K5 (7-9-11-13)**. K2tog] twice. K1.

Cont dec in this manner, having 2 sts less between decs every following alt row to **9 (9-17-17-21)** sts, ending on a purl row.

**Sizes A and B only: Next row:** (RS). (K1. Sl1. K2tog. pss0) twice. K1. 5 sts.

Break yarn, leaving a long end. Thread yarn through rem sts. Pull tightly and fasten securely.

**Sizes C, D and E only: Next row:** (RS). K1. ssk. **K(3-3-5)**. K3tog. ssk. **K(3-3-5)**. K2tog. K1. (**12-12-16**) sts.

Break yarn, leaving a long end. Graft 2 sets of (**6-6-8**) sts.

**All sizes:** Work Maple Leaf Chart **II (II-III-III-III)** in duplicate st on back of Mitten. See charts on page 4.

Sew side seam, reversing seam for cuff turn back.\*\*\*

#### Left Mitten

Work from \*\* to \*\* as given for Right Mitten.

**Thumb gusset: 1st row:** (RS). **K12 (14-16-18-20)**. M1. K2. M1. Knit to end of row.

**2nd and alt rows:** Purl.

**3rd row:** **K12 (14-16-18-20)**. M1. K4. M1. Knit to end of row.

**5th row:** **K12 (14-16-18-20)**. M1. K6. M1. Knit to end of row.

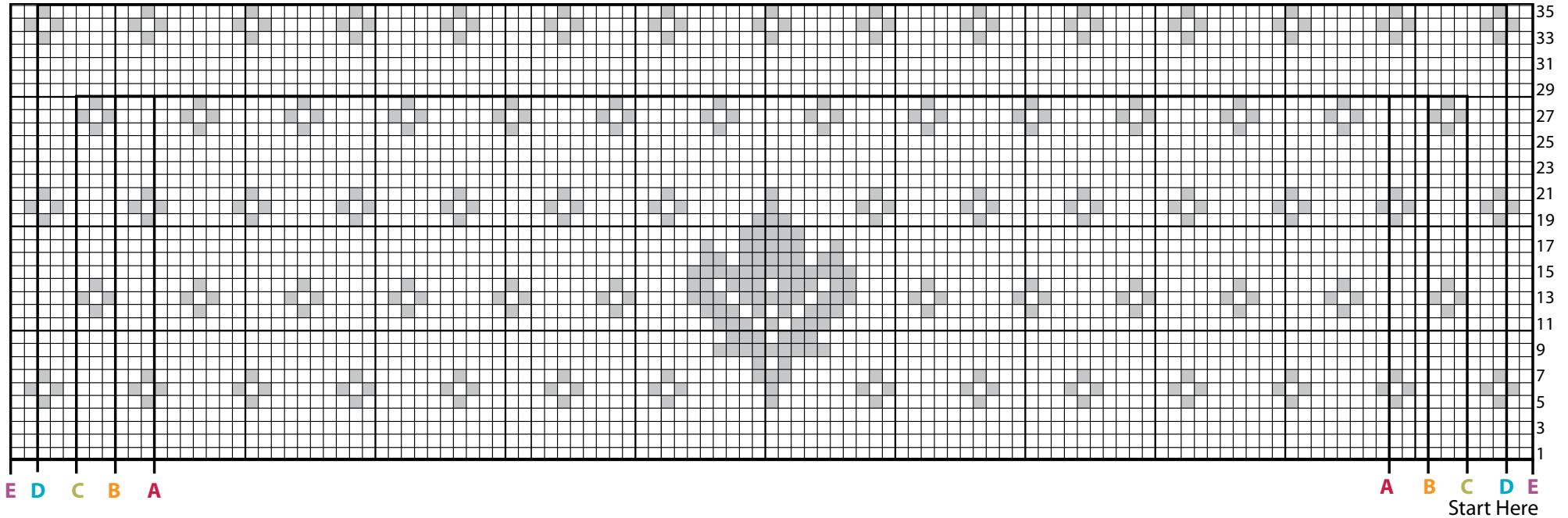
Cont inc in this manner, having 2 sts more between incs for thumb gusset every following alt row to **37 (41-47-53-57)** sts.

Purl 1 row.

**To make Thumb: K22 (24-28-32-34)**. **Turn.** Cast on 1 st. **P11 (11-13-15-15)**, including cast on st. **Turn.** Cast on 1 st. Work from \*\*\* to \*\*\* as given for Right Mitten.



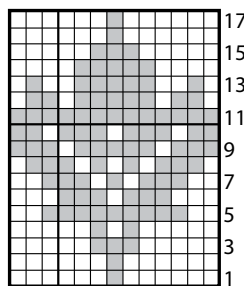
Chart I



Key

- MC
- Contrast A

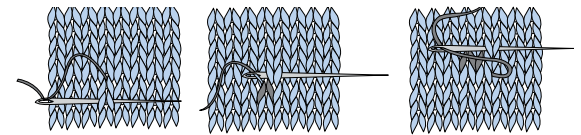
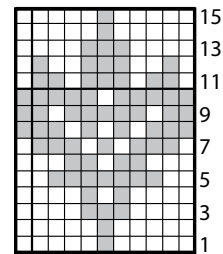
Chart II (Adult Version)



Key

- MC
- Duplicate st with A

Chart III (Child Version)



Duplicate Stitch Diagram