



KNIT  
SKILL LEVEL  
INTERMEDIATE

Designed by Edie Eckman



## What you will need:

RED HEART® Soft®: 9 balls 9388  
Wheat

**Note:** 8 balls may be sufficient. Designer recommends buying a 9th ball to allow for making swatches, and leaving long tails for weaving in and sewing squares together.

Susan Bates® Knitting Needles: 5 mm [US 8]

Susan Bates® Circular Knitting Needles: 5mm [US 8]  
32" (80 cm) or longer (for border)

Cable needle, yarn needle

**GAUGE:** 18 sts = 4" (10 cm); 36 rows = 4" (10 cm) in Garter st (knit every row); 19 sts = 4" (10 cm); 23 rows = 4" (10 cm) in Stockinette st (knit on right side, p on wrong side); Each square = 10 x 10" (25.5 x 25.5 cm). **CHECK YOUR GAUGE.** Use any size needles to obtain the gauge.



RED HEART® Soft®, Art. E728 available in 5 oz (141 g), 256 yd (234 m) balls.

SHOP KIT

# Knit Your Cables Afghan

*This is a wonderful throw for those who like to learn new stitch patterns with a variety of cabled textures. Each of the 10 squares is a knitting adventure! A garter stitched square is placed between the cabled squares in a checkerboard arrangement. We've shown it in all one neutral shade, but of course you can use whatever colors you choose for your own unique design.*

Afghan measures 42" (106.5 cm) wide x 52" (132 cm) long

## Notes

1. The afghan is worked in individual pieces, then seamed.
2. A border is added after all the pieces have been sewn together. The garter stitch squares (Square A) are worked corner-to-corner on the bias.
3. Row 1 is the right side on some squares and the wrong side on other squares; all cable twists take place on right side rows.

## Special Abbreviations

**1/1 LC (1 over 1 Left Cross):** Slip next st to cable needle and hold in front, k1, k1 from cable needle OR bring right needle behind next st on left needle; knit into 2nd st on left needle but do not drop st off needle; knit into first st on right needle, drop both sts off needle.

**1/1 RC (1 over 1 Right Cross):** Slip next st to cable needle and hold in back, k1, k1 from cable needle OR knit into 2nd st on left needle but do not drop st off needle; knit into first st on left needle, drop both sts off needle.

**1/2 LPC (1 over 2 Left Purl Cross):** Slip next st to cable needle and hold in front, p2, k1 from cable needle.

**1/2 RPC (1 over 2 Right Purl Cross):** Slip next 2 sts to cable needle and hold in back, k1, p2 from cable needle.

**2/1 LPC (2 over 1 Left Purl Cross):** Slip next 2 sts to cable needle and hold in front, p1, k2 from cable needle.

**2/1 RPC (2 over 1 Right Purl Cross):** Slip next st to cable needle and hold in back, k2, p1 from cable needle.

**2/2 LC (2 over 2 Left Cross):** Slip next 2 sts to cable needle and hold in front, k2, k2 from cable needle.

**2/2 RC (2 over 2 Right Cross):** Slip next 2 sts to cable needle and hold in back, k2, k2 from cable needle.

**2/2 LPC (2 over 2 Left Purl Cross):** Slip next 2 sts to cable needle and hold in front, p2, k2 from cable needle.

**2/2 RPC (2 over 2 Right Purl Cross):** Slip next 2 sts to cable needle and hold in back, k2, p2 from cable needle.

**3/1 LPC (3 over 1 Left Purl Cross):** Slip next 3 sts to cable needle and hold in front, p1, k3 from cable needle.

**3/1 RPC (3 over 1 Right Purl Cross):** Slip next st to cable needle and hold in back, k3, p1 from cable needle.

**3/3 LC (3 over 3 Left Cross):** Slip next 3 sts to cable needle and hold in front, k3, k3 from cable needle.

**3/3 RC (3 over 3 Right Cross):** Slip next 3 sts to cable needle and hold in back, k3, k3 from cable needle.

**k1-tbl:** Knit 1 stitch through back loop.

**kfb (knit into front and back):** Knit next st but do not remove from needle, knit into back loop of same st and remove from needle.

## Special Technique

**Cable Cast On** = Place a slip knot on left needle, insert right needle into stitch on left needle as if to knit, pull loop through and place on left needle (2 sts on left needle), \*insert needle between first 2 stitches on left needle, pull loop through and place on left needle; repeat from \* until the required number of stitches are on the left needle.

## SQUARE A (make 10)

Cast on 3 sts.

Knit 1 row.

**Increase Row:** Knit to last 2 sts, kfb, k1—1 st increased.

Continued...



Repeat Increase Row until there are 57 sts on the needle.

**Next row:** Knit.

**Decrease Row:** Knit to last 3 sts, k2tog, k1—1 st decreased.

Repeat Decrease Row until 3 sts remain.

Bind off.

## SQUARE B

Cable cast on 50 sts.

**Rows 1 and 5 (right side):** P7, [k4, p4] 5 times, p3.

**Rows 2 and 4:** K3, [k4, p4] 5 times, k7.

**Row 3:** P7, [2/2 LC, p4] 5 times, p3.

**Row 6:** Repeat Row 2.

Repeat Rows 1-6 ten more times. Bind off in pattern on right side.

## SQUARE C

Cable cast on 50 sts.

**Rows 1, 5, 7, 9, 13 and 15 (right side):** P7, \*k6, p4; repeat from \* to last 3 sts, p3.

**Row 2 and all wrong side rows:** K7, \*p6, k4; repeat from \* to last 3 sts, k3.

**Row 3:** P7, [3/3 RC, p4] 2 times, [3/3 LC, p4] 2 times, p3.

**Row 11:** P7, [3/3 LC, p4] 2 times, [3/3 RC, p4] 2 times, p3.

**Row 16:** K7, \*p6, k4; repeat from \* to last 3 sts, k3.

Repeat Rows 1-16 three more times, then work Rows 1-4 once more. Bind off in pattern on right side.

## SQUARE D

Cable cast on 50 sts.

**Rows 1, 3 and 7 (right side):** P3, k4, \*p6, k4; repeat from \* to last 3 sts, p3.

**Rows 2, 4, 6 and 8:** K3, \*p4, k6; repeat from \* to last 7 sts, p4, k3.

**Row 5:** P3, 2/2 LC, \*p6, 2/2 LC; repeat from \* to last 3 sts, p3.

**Rows 9, 11, and 15:** P7, \*p1, k4, p5; repeat from \* to last 3 sts, p3.

**Rows 10, 12, and 14:** K3, \*k5, p4, k1; repeat from \* to last 7 sts, k7.

**Row 13:** P7, \*p1, 2/2 RC, p5; repeat from \* to last 3 sts, p3.

**Row 16:** K3, \*k5, p4, k1; repeat from \* to last 7 sts, k7.

Repeat Rows 1-16 two more times, then work Rows 1-8 once. Bind off in pattern on right side.

## SQUARE E

Cable cast on 50 sts.

**Rows 1 and 5 (right side):** Knit.

**Row 2 and all wrong side rows:** Purl.

**Row 3:** K1, \*2/2 RC, k4; repeat from \* to last st, k1.

**Row 7:** K1, \*k4, 2/2 LC; repeat from \* to last st, k1.

**Row 8:** Purl.

Repeat Rows 1-8 six more times. Bind off in pattern on right side.

## SQUARE F

Long-tail cast on 48 sts.

**Row 1 and all wrong side rows:** [K4, p2] 2 times, k4, p16, k4, [p2, k4] 2 times.

**Row 2:** [P4, 1/1 RC] 2 times, p4, k4, 2/2 RC, 2/2 LC, k4, p4, [1/1 LC, p4] 2 times.

**Row 4:** [P4, 1/1 RC] 2 times, p4, k2, 2/2 RC, k4, 2/2 LC, k2, p4, [1/1 LC, p4] 2 times.

**Row 6:** [P4, 1/1 RC] 2 times, p4, 2/2 RC, k8, 2/2 LC, p4, [1/1 LC, p4] 2 times.

Repeat Rows 1-6 nine more times, then work Rows 1-3 once more. Bind off in pattern on right side.

## SQUARE G

Cable cast on 54 sts.

**Set-Up Row 1 (right side):** P5, k8, p6, k6, p4, k6, p6, k8, p5.

**Set-Up Row 2:** K5, p8, k6, p6, k4, p6, k6, p8, k5.

**Row 1:** P5, 2/2 RC, 2/2 LC, p6, 3/3 RC, p4, 3/3 LC, p6, 2/2 RC, 2/2 LC, p5.

**Rows 2, 12 and 14:** K5, p8, k6, p6, k4, p6, k6, p8, k5.

**Rows 3 and 15:** P5, k8, p5, 3/1 RPC, 3/1 LPC, p2, 3/1 RPC, 3/1 LPC, p5, k8, p5.

**Rows 4, 10, 16 and 22:** K5, p8, k5, [p3, k2] 3 times, p3, k5, p8, k5.

**Rows 5 and 17:** P5, k8, p4, [3/1 RPC, p2, 3/1 LPC] 2 times, p4, k8, p5.

**Rows 6, 8, 18 and 20:** K5, p8, k4, [p3, k4, p3] 2 times, k4, p8, k5.

**Rows 7:** P5, 2/2 LC, 2/2 RC, p4, k3, p4, 3/3 RC, p4, k3, p4, 2/2 LC, 2/2 RC, p5.

**Rows 9 and 21:** P5, k8, p4, [3/1 LPC, p2, 3/1 RPC] 2 times, p4, k8, p5.

**Rows 11 and 23:** P5, k8, p5, 3/1 LPC, 3/1 RPC, p2, 3/1 LPC, 3/1 RPC, p5, k8, p5.

**Row 13:** P5, 2/2 LC, 2/2 RC, p6, 3/3 LC, p4, 3/3 RC, p6, 2/2 LC, 2/2 RC, p5.

**Row 19:** P5, 2/2 RC, 2/2 LC, p4, k3, p4, 3/3 LC, p4, k3, p4, 2/2 RC, 2/2 LC, p5.

**Row 24:** Rep Row 2.

Repeat Rows 1-24 one more time, then repeat Rows 1-14 once more. Bind off in pattern on right side.

## SQUARE H

Cable cast on 50 sts.

**Set-Up Row 1 (right side):** K1, \*k1, p4, k1; repeat from \* to last st, k1.

**Set-Up Row 2:** P1, \*p1, k4, p1; repeat from \* to last st, p1.

**Row 1 (right side):** K1, \*1/2 LPC, 1/2 RPC; repeat from \* to last st, k1.

**Rows 2 and 4:** K1, \*k2, p2, k2; repeat from \* to last st, k1.

**Row 3:** P1, \*p2, k2, p2; repeat from \* to last st, p1.

**Row 5:** K1, \*1/2 RPC, 1/2 LPC; repeat from \* to last st, k1.

**Rows 6:** P1, \*p1, k4, p1; repeat from \* to last st, p1.

**Row 7:** K1, \*k1, p4, k1; repeat from \* to last st, k1.

**Row 8:** Repeat Row 6.

Repeat Rows 1-8 seven more times. Bind off in pattern on right side.

## SQUARE I

Cable cast on 56 sts.

**Rows 1 and 5 (right side):** P2, k1-tbl, p2, k6, p2, k1-tbl, p2, k24, p2, k1-tbl, p2, k6, p2, k1-tbl, p2.

**Row 2 and all wrong side rows:** K2, p1, k2, p6, k2, p1, k2, p24, k2, p1, k2, p6, k2, p1, k2.

**Row 3:** P2, k1-tbl, p2, 2/2 RC, k2, p2, k1-tbl, p2, [2/2 RC, 2/2 LC] 3 times, p2, k1-tbl, p2, 2/2 RC, k2, p2, k1-tbl, p2.

**Row 7:** P2, k1-tbl, p2, k2, 2/2 LC, p2, k1-tbl, p2, [2/2 LC, 2/2 RC] 3 times, p2, k1-tbl, p2, k2, 2/2 LC, p2, k1-tbl, p2.

**Row 8:** K2, p1, k2, p6, k2, p1, k2, p24, k2, p1, k2, p6, k2, p1, k2.

Repeat Rows 1-8 six more times. Bind off in pattern on right side.

## SQUARE J

Long-tail cast on 50 sts.

**Rows 1 and 3 (wrong side):** K3, \*k4, p4, k4, p2, [k1, p1] 3 times, p2; repeat from \* once, k3.

**Row 2:** P3, \*k2, [p1, k1] 3 times, k2, p4, 2/2 RC, p4; repeat from \* once, p3.

**Row 4:** P3, \*2/1 LPC, [k1, p1] 2 times, 2/1 RPC, p3, 2/1 RPC, 2/1 LPC, p3; repeat from \* once, p3.

**Row 5:** K3, \*k3, p2, k1, p3, k4, p3, k1, p1, k1, p2, k1; repeat from \* once, k3.

**Row 6:** P3, \*p1, 2/1 LPC, p1, k1, 2/1 RPC, p3, 2/1 RPC, p1, k1, 2/1 LPC, p2; repeat from \* once, p3.

Continued...

**Row 7:** K3, \*k2, p3, k1, p1, k1, p2, k4, p2, k1, p3, k2; repeat from \* once, k3.

**Row 8:** P3, \*p2, 2/1 LPC, 2/1 RPC, p3, 2/1 RPC, [k1, p1] 2 times, 2/1 LPC, p1; repeat from \* once, p3.

**Row 9:** K3, \*k1, p2, [k1, p1] 3 times, p2, k4, p4, k3; repeat from \* once, k3.

**Row 10:** P3, \*p3, 2/2 RC, p4, k2, [p1, k1] 3 times, k2, p1; repeat from \* once, p3.

**Row 11:** K3, \*k1, p2, [k1, p1] 3 times, p2, k4, p4, k3; repeat from \* once, k3.

**Row 12:** P3, \*p2, 2/1 RPC, 2/1 LPC, p3, 2/1 LPC, [k1, p1] 2 times, 2/1 RPC, p1; repeat from \* once, p3.

**Row 13:** K3, \*k2, p3, k1, p1, k1, p2, k4, p2, k1, p3, k2; repeat from \* once, k3.

**Row 14:** P3, \*p1, 2/1 RPC, p1, k1, 2/1 LPC, p3, 2/1 LPC, p1, k1, 2/1 RPC, p2; repeat from \* once, p3.

**Row 15:** K3, \*k3, p2, k1, p3, k4, p3, k1, p1, k1, p2, k1; repeat from \* once, k3.

**Row 16:** P3, \*2/1 RPC, [k1, p1] 2 times, 2/1 LPC, p3, 2/1 LPC, 2/1 RPC, p3; repeat from \* once, p3.

Repeat Rows 1-16 two more times, then work Rows 1-11 once more. Bind off in pattern on right side.

## SQUARE K

Long-tail cast on 68 sts.

**Rows 1 and 3 (wrong side):** K1, \*k2, p4; repeat from \* to last st, k1.

**Row 2:** P1, \*2/2 LC, p2; repeat from \* to last st, p1.

**Row 4:** P3, \*k2, 2/2 RPC; repeat from \* to last 5 sts, k4, p1.

**Rows 5 and 7:** K1, \*p4, k2; repeat from \* to last st, k1.

**Row 6:** P1, \*p2, 2/2 RC; repeat from \* to last st, p1.

**Row 8:** P1, k4, \*2/2 LPC, k2; repeat from \* to last 3 sts, p3.

Repeat Rows 1-8 seven more times. Repeat Row 1 once more. Bind off in pattern on right side.

## Finishing

Block pieces to approximately 10" (25.5 cm) square. Sew squares together according to assembly diagram, taking care to keep the ridges of all A squares going in the same direction.

## Edging

With long circular needle and right side facing, pick up and knit 215 sts evenly spaced along one long edge of afghan. Knit 5 rows. Bind off. Repeat for other long edge.

With long circular needle and right side of one short edge facing, pick up and knit 3 sts from end of edging, pick up and knit 172 sts evenly spaced to opposite edging, then pick up and knit 3 sts from edging—178 sts.

**Row 1:** Knit to last st, slip 1 purlwise with yarn in front.

**Rows 2-5:** K1-tbl, knit to last st, slip 1 purlwise with yarn in front.

Bind off. Repeat for other short edge. Weave in ends.

## ABBREVIATIONS

**k** = knit; **k2tog** = knit next 2 sts together; **p** = purl; **st(s)** = stitch(es); **[ ]** = work directions in brackets the number of times specified; **\*** = repeat whatever follows the \* as indicated.

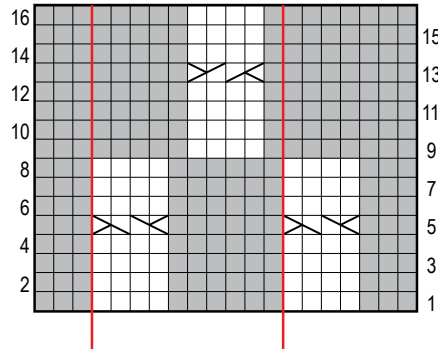
*All Charts and the Assembly Diagram on next pages*



A	D	A	K
B	A	I	A
A	H	A	E
F	A	C	A
A	J	A	G

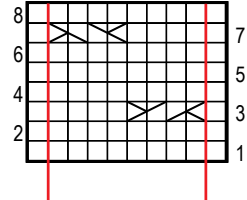
Assembly Diagram

Square D



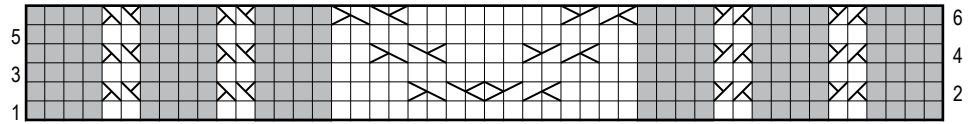
10-st repeat

Square E

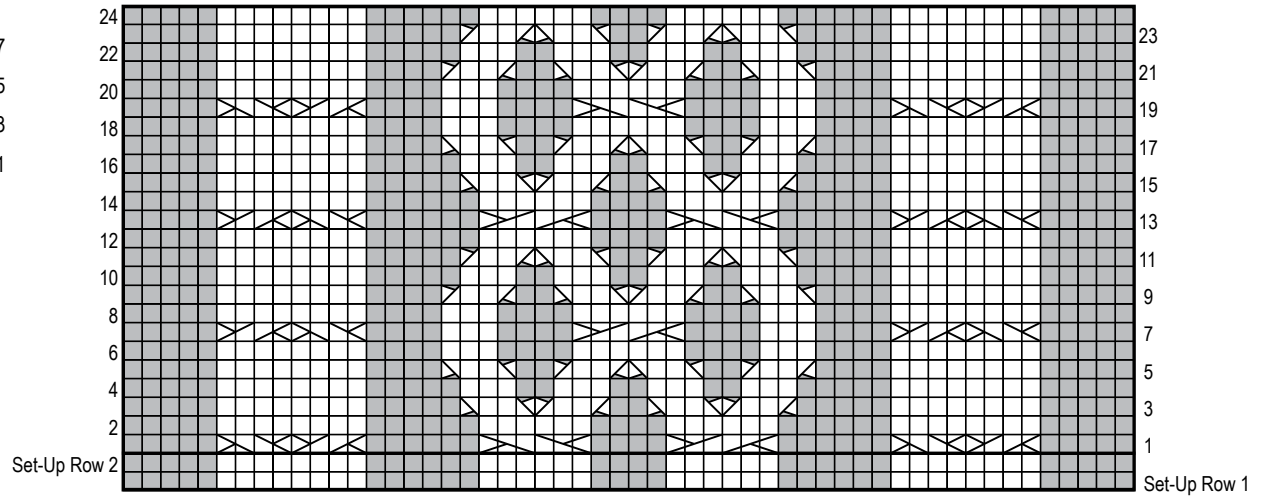


8-st repeat

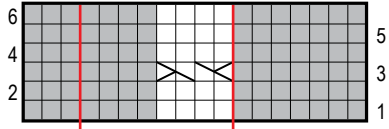
Square F



Square G

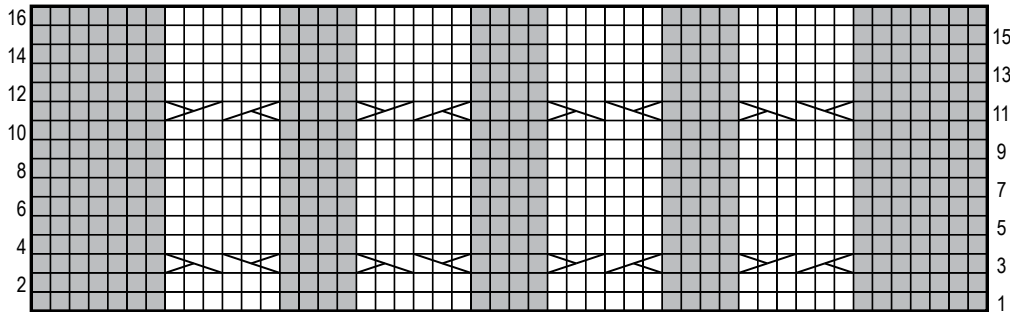


Square B

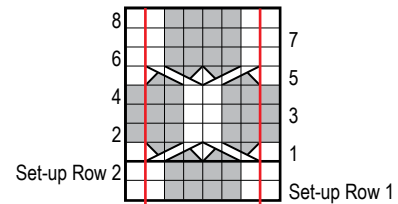


8-st repeat

Square C



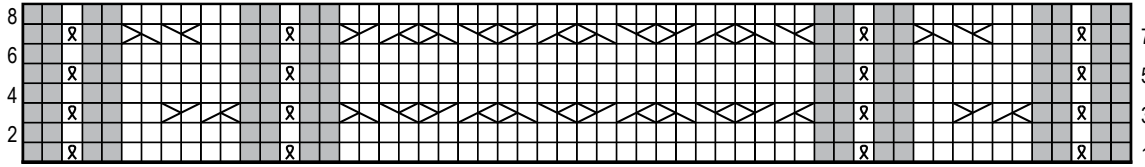
Square H



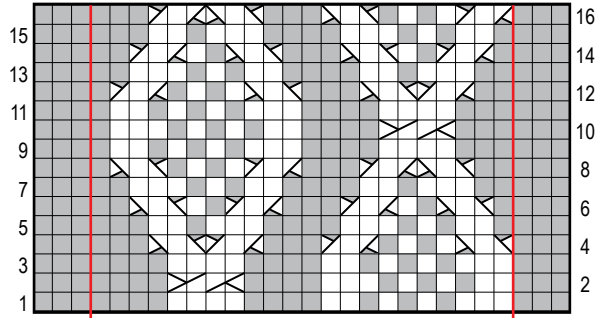
6-st repeat

Charts Continued...

### Square I

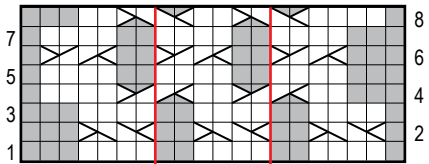


### Square J



22-st repeat

### Square K



6-st repeat

### KEY

- k on RS, p on WS
- p on RS, k on WS
- k tbl
- 1/1 RC
- 1/1 LC
- 2/1 LPC
- 2/1 RPC
- 1/2 LPC
- 1/2 RPC
- 2/2 RC
- 2/2 LC
- 2/2 RPC
- 2/2 LPC
- 3/1 LPC
- 3/1 RPC
- 3/3 RC
- 3/3 LC

*See photo key on next page*



**A.** Bias Garter Stitch Square



**B.** Basic Cables Square



**C.** Snake Cables Square



**D.** Checkerboard Cables Square



**E.** Stockinette Cables Square



**F.** Horseshoe Panel with Twists Square



**G.** XO Panels and Ensign's Braid Square



**H.** Honeycomb Trellis Square



**I.** Honeycomb and Braided Cables



**J.** Seed Stitch Diamonds Square



**K.** Lattice Cables Square