



MATERIALS

Anchor Stitchable Felt Sheets:

3 green
1 yellow

Anchor Stranded Cotton Embroidery Floss

Red, yellow and white

Large-eye tapestry needle

Scissors

Pencil

1/8 - inch wide red satin ribbon (2 to 2 1/2 yards)

✂️ CROSS STITCH | SKILL LEVEL: **EASY**

Featuring Anchor Stitchable Felt

This assortment of Christmas tree pendants gives a modern flair to holiday decorations. Stitching is quick and easy with the Anchor Stitchable Felt.

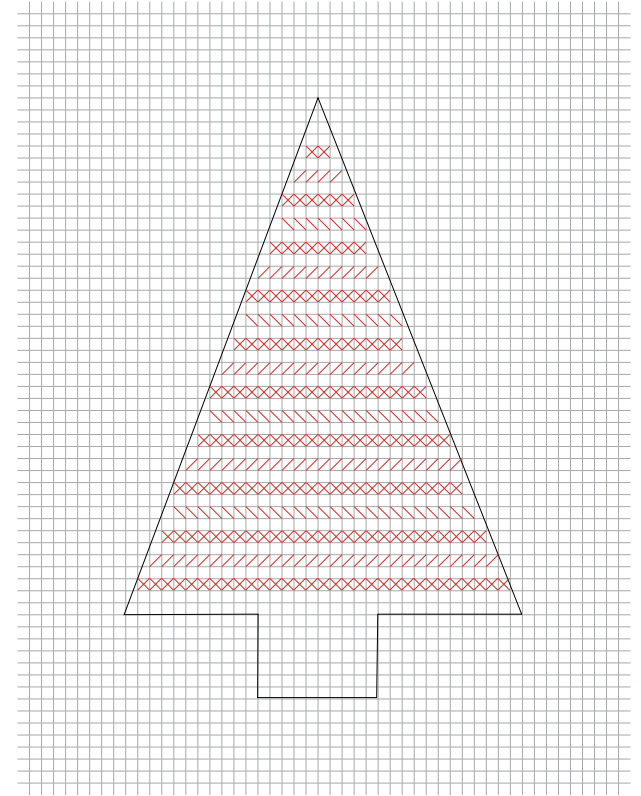
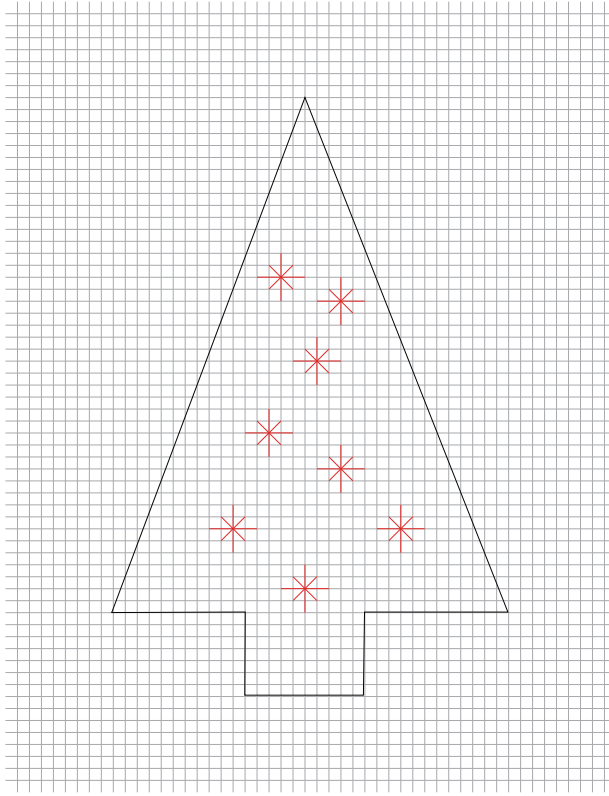
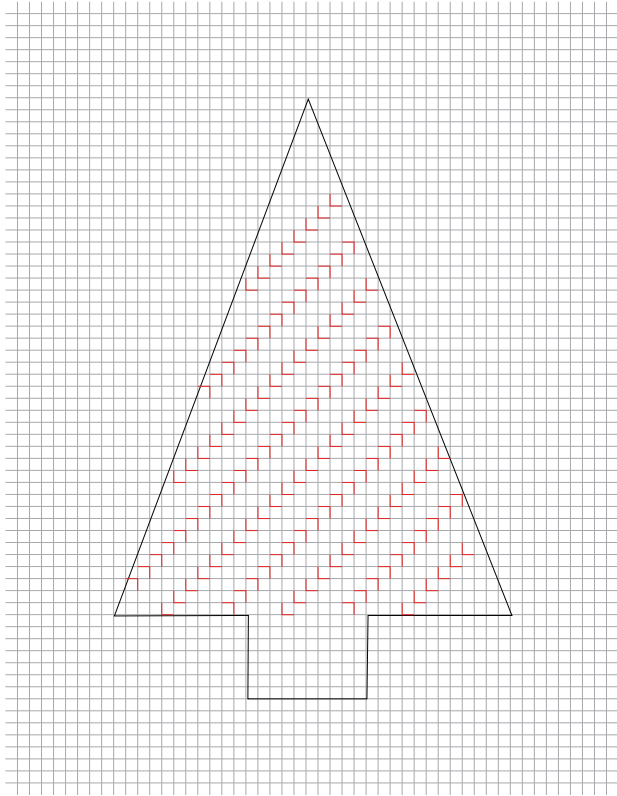
INSTRUCTIONS

1. Cut out paper tree and star patterns on page 4. Trace patterns on Anchor Stitchable Felt and cut.
2. Follow the cross-stitch charts on page 2 - 3 using 3 strands of embroidery floss to make each pendant. Refer to the photograph for floss color suggestions. For additional pendants repeat stitch designs or create new patterns as desired.
3. Using yellow floss stitch the star to the top of the tree using two parallel vertical stitches to create a casing for the satin ribbon. See diagram below:
4. Measure satin ribbon to desired length.
5. Using the large-eye tapestry needle thread the ribbon through the thread casing on the wrong side of the felt tree. Add all of the trees to the ribbon. Slide trees along ribbon to the desired length and placement. Adjust and trim ribbon as needed.

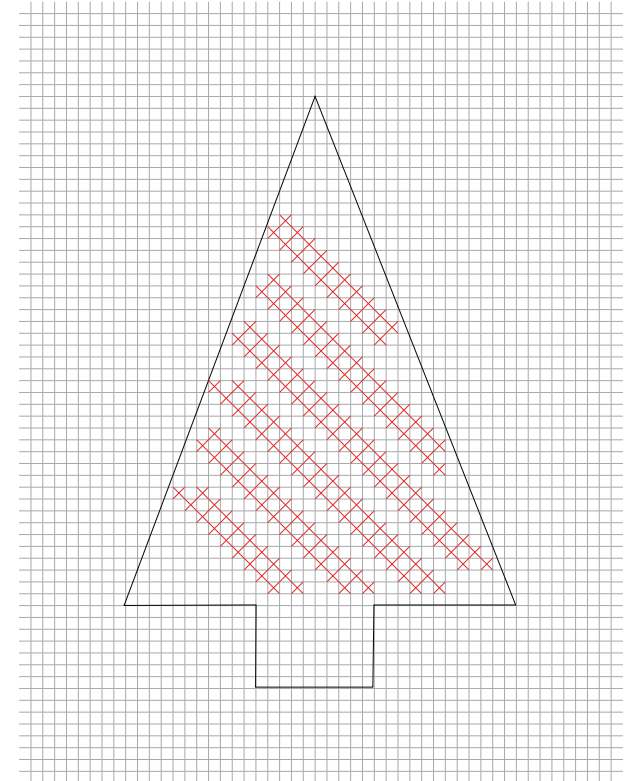
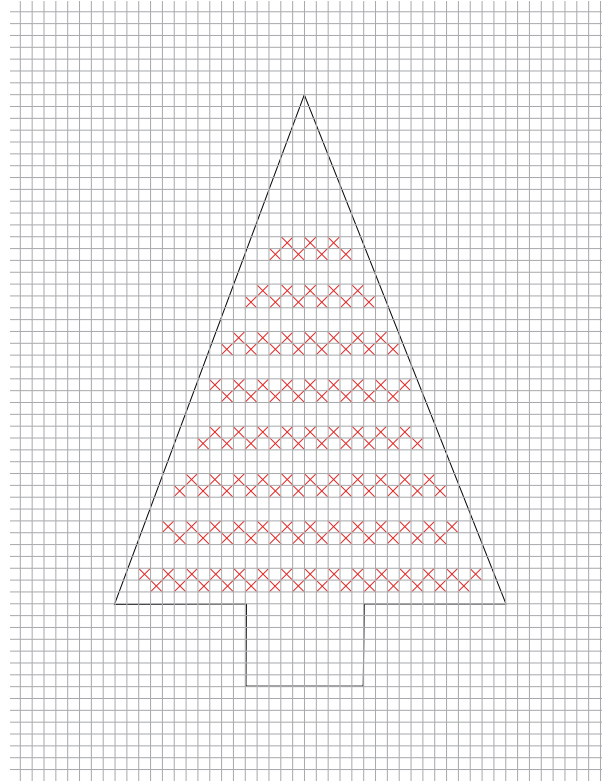
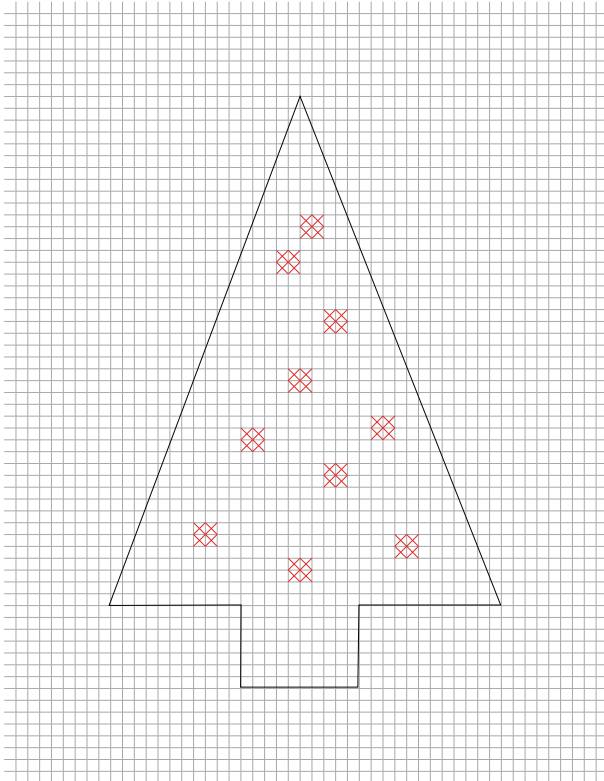
Notes:

- Crochet thread or six strands of embroidery floss may be substituted for the satin ribbon.
- For embroidery stitches with more depth use 6 strands of floss.
- Buy extra green Stitchable Felt sheets for additional tree shapes to glue to the back of the trees to cover stitches if desired.

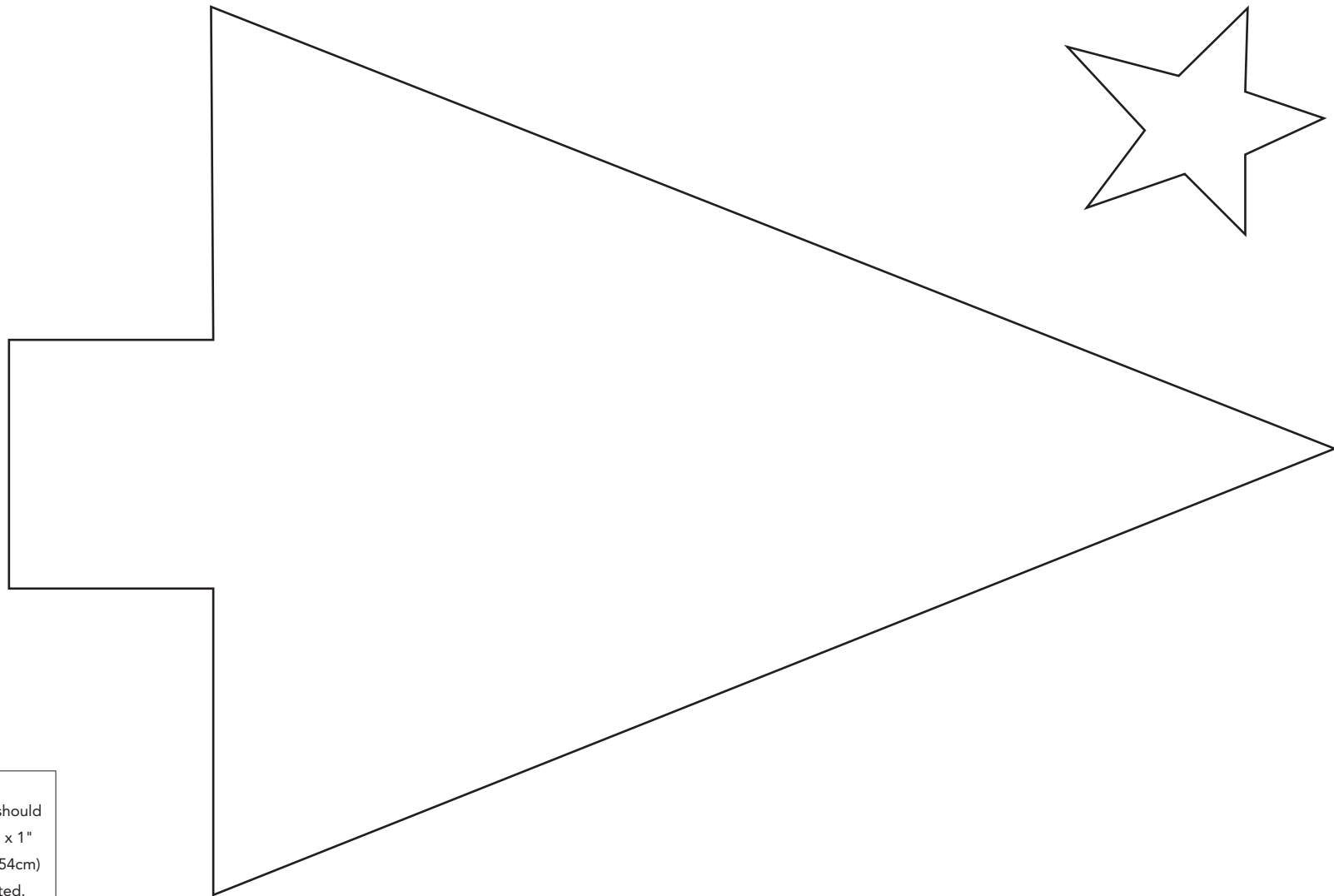




Stitch Key
X Red Cross Stitch
— Red Back Stitch



Stitch Key
X Red Cross Stitch
— Red Back Stitch



This square should
measure 1" x 1"
(2.54cm x 2.54cm)
when printed.

***** Measure templates before cutting to confirm printing at 100%*****