

**Patons**  
Classic Wool

**Patons**  
DECOR



## HATS

### SIZES

#### To fit head measurement

**Small/Medium** 21 ins [53.5 cm]  
**Large/X-Large** 22 ins [56 cm]

### MATERIALS

**Patons Decor** (100 g/3.5 oz) or  
**Patons Classic Wool** (100 g/3.5 oz)

Size	S/M	L/XL	
<b>Main Color (MC)</b> (Red or Green)	1	1	ball
<b>Contrast A</b> (White)	1	1	ball

Sizes 4 mm (U.S. 6) and 4.5 mm (U.S. 7) knitting needles for Hat **or size needed to obtain tension.**

### TENSION

20 sts and 26 rows = 4 ins [10 cm] with 4.5 mm needles in stocking st.

### INSTRUCTIONS

*The instructions are written for smaller size. If changes are necessary for larger size the instructions will be written thus ( ).*

**Note:** When working from charts, carry yarn not in use loosely across WS of work but never over more than 5 sts. When it must pass over more than 5 sts, weave it over and under color in use on next st or at centre point of sts it passes over. The colors are never twisted around one another.

#### REINDEER HAT

\*\*With MC and smaller needles, cast on 114 (118) sts.

**1st row:** K2. \*P2. K2. Rep from \* to end of row.

**2nd row:** P2. \*K2. P2. Rep from \* to end of row.

These 2 rows form (K2. P2) ribbing.

With A, work 2 rows ribbing.

With MC, cont in ribbing until work from beg measures 4 ins [10 cm] ending with a 2nd row and dec 1 st in centre of last row. 113 (117) sts.\*\*

Change to larger needles and proceed in stocking st for 4 rows.

**Place Chart I: Next row:** (RS). With MC, K47 (49). Work 1st row of Chart I across next 19 sts, reading row from right to left. With MC, knit to end of row.

**Next row:** With MC, P47 (49). Work 2nd row of Chart I across next 19 sts, reading row from left to right. With MC, purl to end of row. Chart I is now in position. Cont working Chart I to end of chart.

\*\*\*With MC, cont even until work from beg measures 9½ ins [23 cm] ending with RS facing for next row.

**Shape top: 1st row:** K1. \*Sl1K. K1. pssso. K24 (25). K2tog. Rep from \* 3 times more. 105 (109) sts.

**2nd and alt rows:** Purl.

**3rd row:** K1. \*Sl1K. K1. pssso. K22 (23). K2tog. Rep from \* 3 times more. 97 (101) sts.

**5th row:** K1. \*Sl1K. K1. pssso. K20 (21). K2tog. Rep from \* 3 times more. 89 (93) sts.

**6th row:** As 2nd row.

Cont in this manner, dec 8 sts evenly across next and following alt rows until there are 17 (13) sts. Break yarn leaving a long end. Draw end through rem sts and fasten securely. Sew centre back seam reversing for turnback 2 ins [5 cm] above cast on edge. Attach tassel to twisted cord and sew to point of Hat.



ABBREVIATIONS: [www.patonsyarns.com/glossary](http://www.patonsyarns.com/glossary)

## SNOWFLAKE HAT

Work from \*\* to \*\* as given for Reindeer Hat.

Change to larger needles and proceed in stocking st for 6 rows.

**Place Chart II: Next row:** With MC, K47 (49). Work 1st row of Chart II across next 19 sts, reading row from right to left. With MC, knit to end of row.

**Next row:** With MC, P47 (49). Work 2nd row of Chart II across next 19 sts, reading row from left to right. With MC, purl to end of row.

Chart II is now in position.

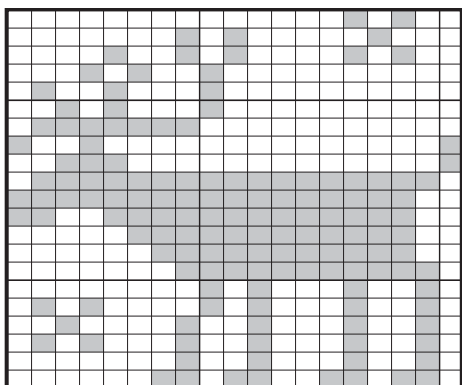
Cont working Chart II to end of chart.

Work from \*\*\* to \*\*\* as given for Reindeer Hat.

**Twisted Cord:** Cut 3 strands of MC 20 ins [51 cm] long. With all strands tog hold one end and with someone holding other end, twist strands to the right until they begin to curl. Fold the ends tog and tie in a knot so they will not unravel. The strands will now twist themselves tog. Adjust length if desired.

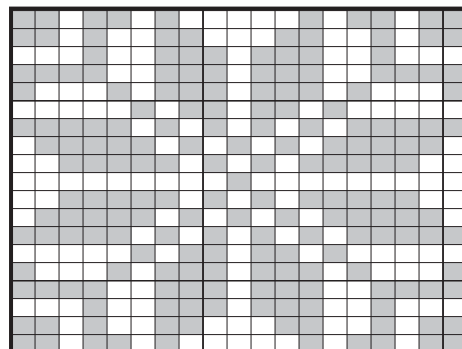
**Make Tassel:** Cut a piece of cardboard 4½ ins [11 cm] wide. Wind A around cardboard 25 times. Break yarn leaving a long end and thread end through a needle. Slip needle through all loops and tie tightly. Remove cardboard and wind yarn tightly around loops ¾ inch [2 cm] below fold. Fasten securely. Cut through rem loops and trim ends evenly.\*\*\*

Chart I





Start Here

Chart II

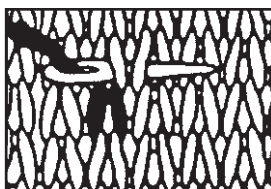


Start Here

### Key

-  = MC
-  = Contrast A

### Duplicate St Diagram



 Patons

... a part of your life.

P.O. Box 40, Listowel ON N4W 3H3