



CROCHET  
SKILL LEVEL  
INTERMEDIATE



# Delicate Shells Crochet Shawl

The openwork crochet stitches change for each section, making this drapery shawl as fun to crochet as it is to have in your wardrobe of accessories. The winsome colors of this amazing acrylic/cotton blend yarn move beautifully from one shade to the next.

**Shawl measures about 66" [167.5 cm] wide and 15" [38 cm] long**

### Notes

1. Shawl is worked lengthwise, back and forth in rows.
2. To work the last lace section in same yarn colors as first lace section, before you join the 2nd cake of yarn unwind the cake so that you can begin at about the same color as the last row of the first lace section and work towards the lighter-colored end of the cake.

### Special Stitches

**beg-dc-shell** (beginning double crochet shell) = (Slip st, ch 5, 3 dc) in indicated stitch.

**dc-shell** (double crochet shell) = Work 4 dc in indicated stitch or space.

**end-dc-shell** (end double crochet shell) = (3 dc, tr) in in indicated corner stitch.

**beg-hdc-shell** (beginning half double crochet shell) = (Slip st, ch 4, 3 hdc) in indicated stitch.

**end-hdc-shell** (end half double crochet shell) = (3 hdc, dc) in indicated stitch.

**lg-shell** (large shell) = (Dc, [ch 1, dc] 3 times) in indicated space.

### SHAWL

**Row 1 (right side):** \*Ch 5, 2 dc in 5th ch from hook; repeat from \* 94 more times—95 (2-dc groups).

Straighten Row 1 stitches so that the ch-5 spaces are all along one long edge and the 2nd dc of the 2-dc groups are all along the other long edge.

### First Lace Section

**Row 2 (right side):** Do not turn, working along the long dc edge of Row 1, beg-dc-shell around post of last dc made, ch 1, dc-shell around post of 2nd dc of each 2-dc group to last 2-dc groups, ch



1, end-dc-shell around post of 2nd dc of last 2-dc group—93 dc-shells, 2 ch-1 spaces, 1 beg-dc-shell and 1 end-dc-shell.  
**Row 3 (wrong side):** Ch 1, turn, skip first tr, slip st in next dc, beg-dc-shell in next dc, ch 3, dc in 2nd dc of next dc-shell, ch 1, dc in next dc of same dc-shell, \*ch 3, sc in space between 2nd and 3rd dc of next dc-shell, ch 3, dc in 2nd dc of next dc-shell, ch 1, dc in next dc of same dc-shell; repeat from \* to beg-dc-shell, ch 3, end-dc-shell in 2nd dc of beg-dc-shell—47 (dc, ch 1, dc) groups, 46 sc, 94 ch-3 spaces, 1 beg-dc shell and 1 end-dc-shell.

continued...

Designed by Lisa Gentry

### What you will need:

**RED HEART® It's A Wrap Rainbow™:** 2 balls 9347 Whisper

**Susan Bates® Crochet Hook:** 4mm [US G-6]

Yarn needle

**GAUGE:** 5 pattern repeats = about 7" [18 cm]; 8 rows = 3" [7.5 cm] in pattern. **CHECK YOUR GAUGE.** Use any size hook to obtain the gauge.



**RED HEART® It's A Wrap Rainbow™,** Art. E862 available

in 5.29 oz (150 g), 623 yd (570 m) cakes

SHOP KIT



2015 - 2018  
**WOMEN'S CHOICE AWARD™**  
AMERICA'S MOST RECOMMENDED  
YARN BRAND



**Row 4:** Ch 1, turn, skip first tr, slip st in next dc, beg-dc-shell in next dc, \*ch 2, lg-shell in next ch-1 space; repeat from \* to last ch-3 space, ch 2, skip last ch-3 space, end-dc-shell in 2nd dc of beg-dc-shell—93 lg-shells, 1 beg dc-shell and 1 end-dc-shell—47 lg-shells, 48 ch-2 spaces, 1 beg-dc shell and 1 end-dc-shell.

**Row 5:** Ch 1, turn, skip first tr, slip st in next dc, beg-dc-shell in next dc, ch 3, dc in 2nd dc of next lg-shell, ch 1, skip center ch-1 space of same lg-shell, dc in next dc of same lg-shell, \*ch 3, sc in next ch-2 space, ch 3, dc in 2nd dc of next lg-shell, ch 1, skip center ch-1 space of same lg-shell; repeat from \* to beg-dc-shell, ch 3, end-dc-shell in 2nd dc of beg-dc-shell—47 (dc, ch 1, dc) groups, 46 sc, 94 ch-3 spaces, 1 beg-dc shell and 1 end-dc-shell.

**Row 6:** Repeat Row 4.

### First Mesh Section

**Row 7:** Ch 1, turn, skip first tr, slip st in next dc, beg-hdc-shell in next dc, skip next ch-2 space, 2 hdc in each ch-1 space of next lg-shell, \*2 hdc in next ch-2 space, 2 hdc in each ch-1 space of next lg-shell; repeat from \* to last ch-2 space, skip last ch-2 space, end-hdc-shell in 2nd dc of beg-dc-shell—374 hdc, 1 beg-hdc-shell and 1 end-hdc-shell.

**Row 8:** Ch 1, turn, skip first dc, slip st in next dc, beg-dc-shell in next hdc, \*ch 1, dc in first hdc of next 2-hdc group; repeat from \* to beg-hdc-shell, ch 1, end-dc-shell in 2nd hdc of beg-hdc-shell—187 dc, 188 ch-1 spaces, 1 beg-dc-shell and 1 end-dc-shell.

**Rows 9–11:** Ch 1, turn, skip first tr, slip st in next dc, beg-dc-shell in next dc, \*ch 1, skip next ch-1 space, dc in next dc; repeat from \* to last ch-1 space, ch 1, end-dc-shell in 2nd dc of beg-dc-shell.

**Row 12:** Ch 1, turn, skip first tr, slip st in next dc, beg-hdc-shell in next dc, skip first ch-1 space, \*hdc in next dc, hdc in next ch-1 space; repeat from \* to beg-dc-shell, end-hdc-shell in 2nd dc of beg-dc-shell—374 hdc, 1 beg-hdc-shell, and 1 end-hdc-shell.

### Center Lace Section

**Row 13:** Ch 1, turn, skip first dc, slip st in next hdc, beg-dc-shell in next hdc, ch 3, skip last hdc of end-hdc-shell, skip next 2 hdc, dc in next hdc, ch 1, dc in next hdc, \*ch 3, skip next 3 hdc, sc in space between last skipped hdc and next hdc, ch 3, skip next 3 hdc, dc in next hdc, ch 1, dc in next hdc; repeat from \* to beg-hdc-shell, ch 3, end-dc-shell in 2nd hdc of beg-hdc-shell—47 (dc, ch 1, dc) groups, 46 sc, 94 ch-3 spaces, 1 beg-dc shell and 1 end-dc-shell.

**Rows 14–27:** Repeat Rows 4 and 5 for 7 times.

**Row 28:** Repeat Row 4.

### Second Mesh Section

**Rows 29–35:** Repeat Rows 7–13.

### Last Lace Section

**Rows 36 and 37:** Repeat Rows 4 and 5.

**Row 38 (right side):** Repeat Row 4. Fasten off.

**Row 39 (right side):** With right side facing, join yarn with slip st in first dc, beg-dc-shell in next dc, ch 1, skip first ch-2 space, dc-shell in center ch-1 space of next lg-shell, \*dc-shell in next ch-2 space, dc-shell in center ch-1 space of next lg-shell; repeat from \* to last ch-2 space, ch 1, skip last ch-2 space, end-dc-shell in 2nd dc of beg-dc-shell—93 lg-shells, 2 ch-1 spaces, 1 beg-dc-shell and 1 end-dc-shell.

Fasten off.

**Row 40 (right side):** With right side facing, join yarn with slip st in top of beginning ch-5, ch 4, dc in same st, (slip st, ch 4, dc) in first ch-1 space, (slip st, ch 4, dc) in each space between lg-shells, (slip st, ch 4, dc) in last ch-1 space, slip st in last tr—95 (slip st, ch 4, dc) groups.

Fasten off.

### FINISHING

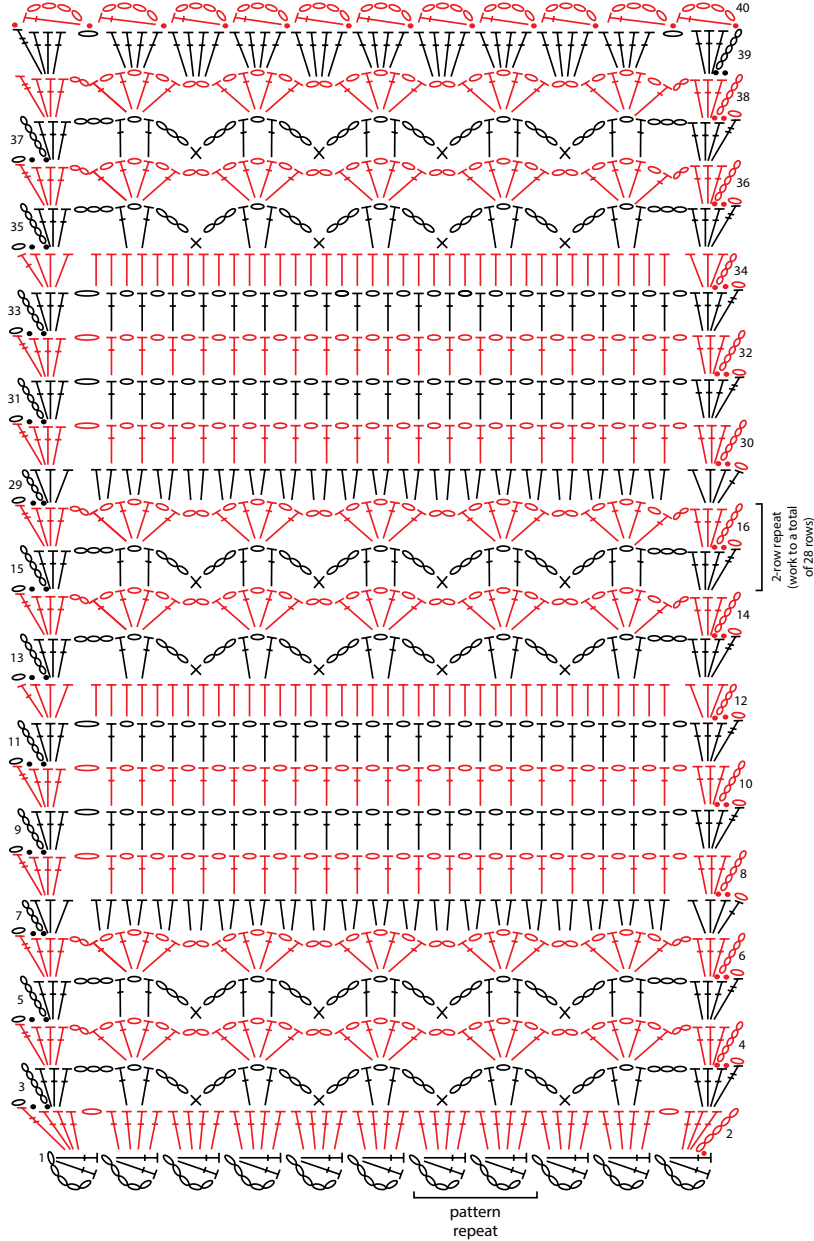
Weave in ends.

Pin piece to finished measurements and cover with a damp cloth to block. Allow piece to dry completely before unpinning.

### ABBREVIATIONS

**ch** = chain; **dc** = double crochet; **hdc** = half double crochet; **sc** = single crochet; **st(s)** = stitch(es); **tr** = treble (triple) crochet; **( )** = work directions in parentheses into same st; **[ ]** = work directions in brackets the number of times specified; \* = repeat whatever follows the \* as indicated.





**KEY**

- = slip stitch (sl st)
- = chain (ch)
- × = single crochet (sc)
- ┆ = half double crochet (hdc)
- ┆┆ = double crochet (dc)
- ┆┆┆ = treble crochet (tr)

