



KNIT | SKILL LEVEL: **INTERMEDIATE**

ABBREVIATIONS

Approx = Approximately

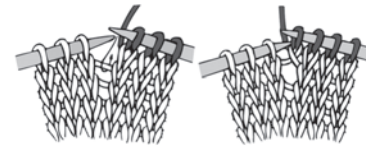
Beg = Begin(ning)

Cont = Continue

K = Knit

K2tog = Knit 2 stitches together

M1 = Make 1 stitch by picking up horizontal loop lying before next stitch and knitting into back of loop



P = Purl

P2togtbl = Purl 2 stitches together through back loops

Pat = Pattern

Rep = Repeat

RS = Right side

Ssk = Slip next 2 stitches knitwise one at a time. Pass them back onto left-hand needle, then knit through back loops together.

Ssp = Slip next 2 stitches knitwise one at a time. Pass them back onto left-hand needle, then purl together through front loops.

St(s) = Stitch(es)

WS = Wrong side

Yo = yarn over

MATERIALS

Caron® Baby Cakes™ (3.5 oz/100 g; 231 yds/211 m)

Fresh Air (50014)

5 balls

Size U.S. 8 (5 mm) circular knitting needle 29" [73.5] long **or size needed to obtain gauge.**

MEASUREMENTS

Approx 38" [96.5 cm] square.

GAUGE

18 sts and 24 rows = 4" [10 cm] in stocking stitch.

INSTRUCTIONS

Note: To maintain consistent striping throughout project, wind

off and cut yarn before desired color when joining new ball.

Cast on 158 sts. **Do not** join. Working back and forth across needle in rows proceed as follows:

Knit 17 rows (garter st), noting 1st row is RS.

Next row: (WS). K1. *M1. K13. Rep from * to last st. K1. 170 sts.

Proceed in Pat as follows:

1st row: (RS). K10. *K12. ssk. K11. yo. Rep from * to last 10 sts. K10.

2nd row: K10. *P1. yo. P10. P2togtbl. K12. Rep from * to last 10 sts. K10.

3rd row: K10. *P12. ssk. K9. yo. K2. Rep from * to last 10 sts. K10.

4th row: K10. *P3. yo. P8. P2togtbl. P12. Rep from * to last 10 sts. K10.

5th row: K10. *K12. ssk. K7. yo. K4. Rep from * to last 10 sts. K10.

6th row: K10. *P5. yo. P6. P2togtbl. K12. Rep from * to last 10 sts. K10.

7th row: K10. *P12. ssk. K5. yo. K6. Rep from * to last 10 sts. K10.

8th row: K10. *P7. yo. P4. P2togtbl. P12. Rep from * to last 10 sts. K10.

9th row: K10. *K12. ssk. K3. yo. K8. Rep from * to last 10 sts. K10.

10th row: K10. *P9. yo. P2. P2togtbl. K12. Rep from * to last 10 sts. K10.

11th row: K10. *P12. ssk. K1. yo. K10. Rep from * to last 10 sts. K10.

12th row: K10. *P11. yo. P2togtbl. P12. Rep from * to last 10 sts. K10.

13th row: K10. *yo. K11. K2tog. K12. Rep from * to last 10 sts. K10.

14th row: K10. *K12. ssp. P10. yo. P1. Rep from * to last 10 sts. K10.

15th row: K10. *K2. yo. K9. K2tog. P12. Rep from * to last 10 sts. K10.

16th row: K10. *P12. ssp. P8. yo. P3. Rep from * to last 10 sts. K10.

17th row: K10. *K4. yo. K7. K2tog. K12. Rep from * to last 10 sts. K10.

18th row: K10. *K12. ssp. P6. yo. P5. Rep from * to last 10 sts. K10.

19th row: K10. *K6. yo. K5. K2tog. P12. Rep from * to last 10 sts. K10.

20th row: K10. *P12. ssp. P4. yo. P7. Rep from * to last 10 sts. K10.

21st row: K10. *K8. yo. K3. K2tog. K12. Rep from * to last 10 sts. K10.

22nd row: K10. *K12. ssp. P2. yo. P9. Rep from * to last 10 sts. K10.

23rd row: K10. *K10. yo. K1. K2tog. P12. Rep from * to last 10 sts. K10.

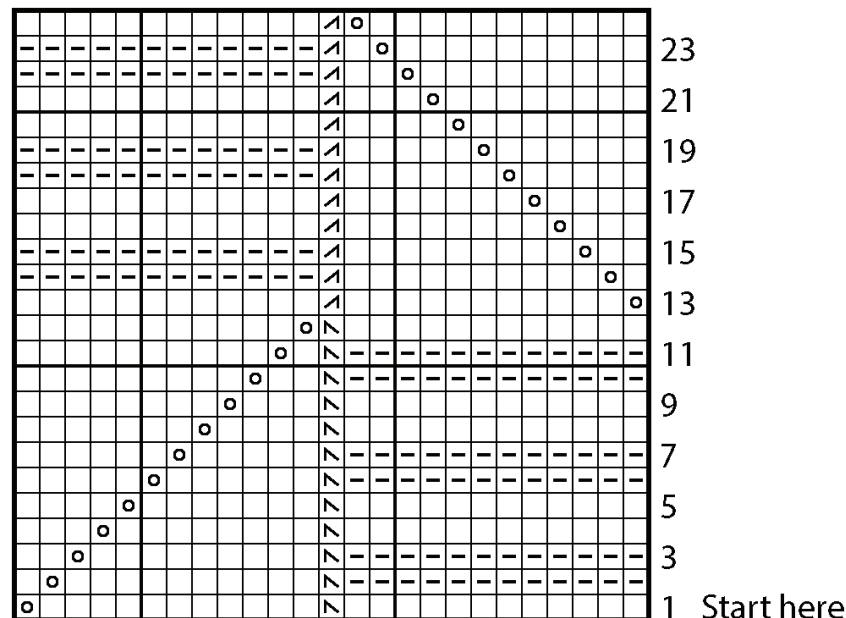
24th row: K10. *P12. ssp. yo. P11. Rep from * to last 10 sts. K10.

These 24 rows form Pat.

Cont in Pat until work from beg measures approx 35¾" [91cm] ending on a 12th or 24th row.

Next row: (RS). K1. *K2tog. K12. Rep from * to last st. K1. 158 sts.

Knit 16 rows (garter stitch). Cast off.



Key

- ☐ = Knit on RS rows. Purl on WS rows.
- ◻ = Purl on RS rows. Knit on WS rows.
- ◻ = ssk on RS rows. P2togtbl on WS rows.
- ◻ = K2tog on RS rows. ssp on WS rows.
- ◻ = yo