



ABBREVIATIONS:

Approx =	Approximate(ly)	in next ch or st. Ch 1, then work 1 dc in first skipped ch or st.	Sc = Single crochet
Beg =	Begin(ning)		Sp(s) = Space(s)
Ch =	Chain(s)		St(s) = Stitch(es)
Cr2dc =	Worked over 3 ch or 3 sts: Skip next 2 ch or sts. 1 dc		Tog = Together
		Dc = Double crochet	WS = Wrong side
		Pat = Pattern	
		Rep = Repeat	
		RS = Right side	

 CROCHET | SKILL LEVEL: EASY

MEASUREMENTS

Approx 11" [28 cm] wide x 94" [240 cm] long, excluding fringe.

GAUGE

6 sc and 7 rows = 4" [10 cm].

INSTRUCTIONS

Ch 22. See chart on page 2.

1st row: (RS). Skip first 3 ch (counts as dc). (Cr2dc over next 3 ch) 6 times. 1 dc in last ch. Turn.

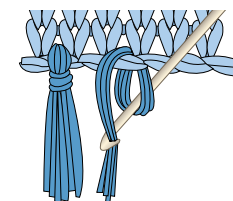
2nd row: Ch 1. 1 sc in each dc and ch-1 sp to end of row. Turn. 20 sc.

3rd row: Ch 3 (counts as dc). (*Working in back loops only*, Cr2dc over next 3 sc) 6 times. 1 dc in last sc. Turn.

4th row: As 2nd row.

Rep 3rd and 4th rows for pat until Scarf measures approx 94" [240 cm], ending on a 3rd row of pat. Fasten off.

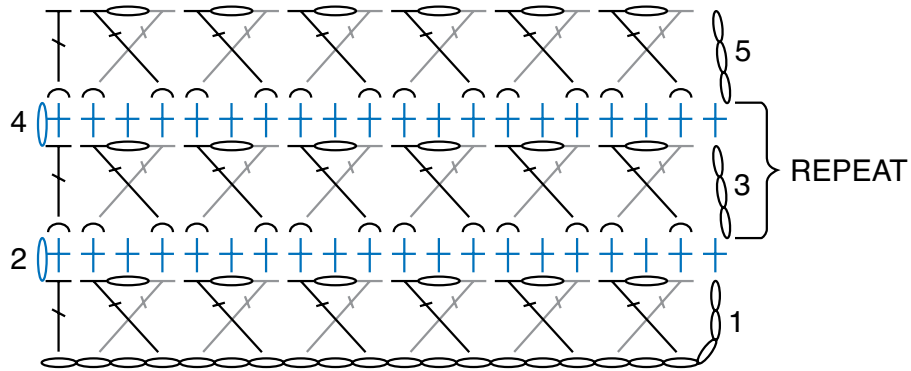
Fringe: Cut lengths of yarn 24" [61 cm] long. Taking 3 strands tog, knot into fringe evenly across each end of Scarf. Trim fringe evenly.



MATERIALS

Bernat® Softee® Chunky™ (3.5 oz/100 g; 108 yds/99 m)
Teal (28203) **4 balls**

Size U.S. M/13 (9 mm) crochet hook **or size needed to obtain gauge.**



STITCH KEY

- = chain (ch)
- ⊥ = single crochet (sc)
- ⊥ = double crochet (dc)
- ⊥ = Cr2dc
- ⊂ = work in back loop only

