



Technique:	Sewing / Fabric crafting
Designed By:	Linda Turner Griepentrog
Skill Level:	Beginner
Crafting Time:	2 hours

Gift cards are welcomed by most people and a clever presentation makes the present even more fun. These cute felt gift card holders are a great way try decorative threads and stitches by hand or machine.

Finished Size of the Project:

2½" x 4" (6.5 cm x 10 cm)

Supplies (for each):

Dual Duty XP All-Purpose thread
 1 felt rectangle, 9" x 12" (23 cm x 30 cm)
For embellishing: Dual Duty XP Heavy, Coats Metallic.
 Ribbon, Star button

Cutting:

From the felt, cut:

1 card holder, using the pattern; mark the design area with pins

Embellishing the Card Holder:

White

Using a double strand of Dual Duty XP Heavy thread, stitch the design lines across the design area of the felt. Knot the ends on the underside.

Red

Using Metallic thread in the needle and All-Purpose thread in the bobbin, sew decorative machine stitches across the design area. Thread the ends into a needle and secure on the underside.

Green

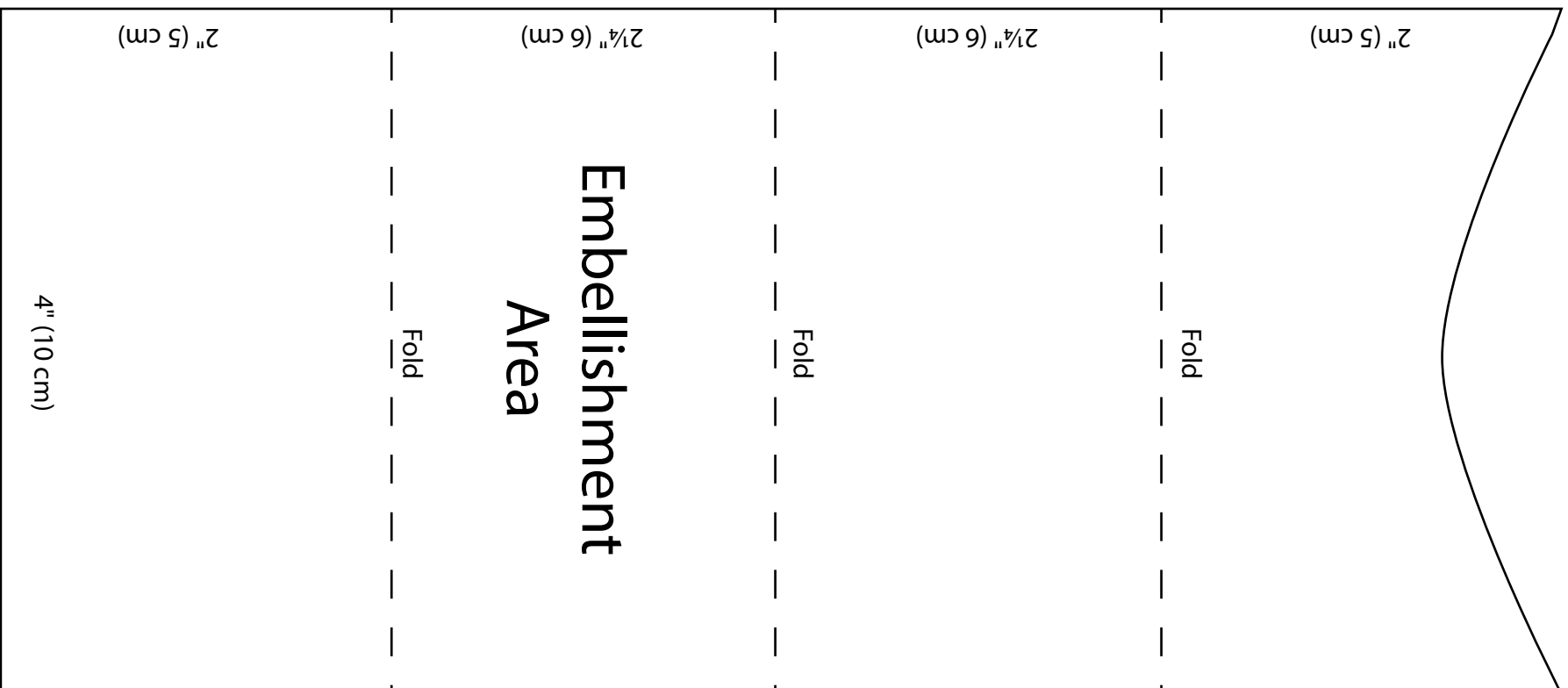
Using XP Heavy thread in the needle and All-Purpose thread in the bobbin, set the machine for a 4.0 wide/2.0 long zigzag stitch. Beginning about 1" from one long edge, stitch three vertical rows of zigzagging $\frac{1}{4}$ " (.6 cm) apart. Use the presser foot edge for spacing. Using 9" (23 cm) of $\frac{1}{4}$ " (.6 cm) wide ribbon, tie a bow. Trim ribbons ends diagonally. Sew $1\frac{1}{4}$ " (3 cm) star button over the bow, attaching it to the left side of the card holder in the marked design area.

TIP: The design area on the case can be embellished with other techniques as well—appliqué, embroidery (hand or machine), fabric paints, etc.

Assembling the Card Holder:

1. Fold the card holder $2\frac{1}{4}$ " (6.5 cm) from the shaped end and pin the edges together.
2. Fold the upper edge $2\frac{1}{4}$ " (6.5 cm) from the end and pin the edges together.
3. Edgestitch the case sides and flap lower edge using matching All-Purpose thread. Press lightly.
4. Insert the gift card into the shaped pocket area.





**Coats Gift Card
Holder**
Cut 1 from felt