



KNIT | SKILL LEVEL: **INTERMEDIATE**

### ABBREVIATIONS

**Alt** = Alternate(ing)

**Approx** = Approximate(ly)

**Beg** = Begin(ing)

**Cont** = Continue

**Dec** = Decrease(ing)

**Inc** = Increase(ing)

**K** = Knit

**K2tog** = Knit next 2 stitches together

**M1** = Make 1 stitch by picking up horizontal loop and knitting into back of loop

**P** = Purl

**Pat** = Pattern

**PM** = Place marker

**Rem** = Remain(ing)

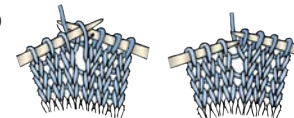
**Rep** = Repeat

**Rnd(s)** = Round(s)

**RS** = Right side

**St(s)** = Stitch(es)

**WS** = Wrong side



### MATERIALS

**Bernat® Super Value™** (7 oz/197 g; 440 yds/402 m)

Sizes	4	6	8	10	
<b>Main Color (MC)</b> Clay (53041)	1	1	2	2	ball(s)
<b>Contrast A</b> Aqua (53201)	1	1	1	1	ball
<b>Contrast B</b> Winter White (07407)	1	1	1	1	ball

Sizes 4 mm (U.S. 6) and 5 mm (U.S. 8) circular knitting needles 24" [61 cm] long. Set of four sizes 4 mm (U.S. 6) and 5 mm (U.S. 8) double-pointed knitting needles **or size needed to obtain gauge.** 4 st holders.

### SIZES

#### To fit chest measurement

4	23" [58 cm]
6	25" [63.5 cm]
8	26½" [67.5 cm]
10	28" [71 cm]

#### Finished chest

4	26½" [67.5 cm]
6	30" [76 cm]
8	32" [81.5 cm]
10	34" [86.5 cm]

### GAUGE

18 sts and 24 rows = 4" [10 cm] with larger needles in stocking st.

### INSTRUCTIONS

The instructions are written for smallest size. If changes are necessary for larger sizes the instructions will be written thus ( ). When only one number is given, it applies to all sizes. For ease in working, circle all numbers pertaining to your size.

**Note:** When working from chart, carry yarn not in use loosely across WS of work, but never over more than 5 sts. When it must pass over more than 5 sts, weave it over and under color in use on next st or at center point of sts it passes over. The colors are never twisted around one another.

**Body:** With A and smaller circular needle, cast on **120 (136-144-152)** sts. Join in rnd, placing marker on first st.

**1st rnd:** \*K1. P1. Rep from \* around. Rep last rnd of (K1. P1) ribbing for 2" [5 cm].

Change to larger circular needle and knit 1 rnd.

**Next rnd:** (Inc rnd). [K**15 (17-18-19)**. M1] 8 times. **128 (144-152-160)** sts.

Knit Chart I to end of chart, *reading rnds from right to left*, noting 8-st rep will be worked **16 (18-19-20)** times. Break A and B at end of chart.

**Next rnd:** (Dec rnd). With MC, [K**14 (16-17-18)**. K2tog] 8 times. **120 (136-144-152)** sts.

With MC, knit in rnds until work from beg measures **12½ (13-14-15)" [32 (33-35.5-38) cm]**.

**Next rnd:** K**5 (5-6-6)**. Slip these **5 (5-6-6)** sts and last **5 (5-6-6)** sts of previous rnd onto a st holder. **10 (10-12-12)** sts on holder. K**60 (68-72-76)**. Slip last **10 (10-12-12)** sts just worked onto a st holder. Knit to end of rnd.

**Sleeves:** With A and set of four smaller needles, cast on **34 (34-42-42)** sts. Divide these sts onto 3 needles. Join in rnd, placing a marker on first st. Work 2" [5 cm] in (K1. P1) ribbing as given for Body, inc 6 sts evenly around last rnd. **40 (40-48-48)** sts.

Change to larger set of needles and knit 1 rnd.

Knit Chart I to end of chart, *reading rnds from right to left*, noting 8-st rep will be worked **5 (5-6-6)** times. Break A and B.

With MC, knit in rnds inc 1 st each end of next rnd and following **8th (4th-6th-6th)** rnds until there are **48 (56-60-66)** sts. Cont even until Sleeve from beg measures **10½ (11-12-13½)" [26.5 (28-30.5-39.5) cm]**.

**Next rnd:** K**5 (5-6-6)**. Slip these **5 (5-6-6)** sts and last **5 (5-6-6)** sts of previous rnd onto a st holder. **10 (10-12-12)** sts on holder. Leave rem sts on a spare needle.

**Yoke:** With MC and larger circular needle \*K**38 (46-48-54)** of Sleeve. K**50 (58-60-64)** of Body. Rep from \* once more. PM at end of rnd. **176 (208-216-236)** sts.

**Size 10 only: Next rnd:** \*K57. K2tog. Rep from \* around. 232 sts.

**All Sizes:** Knit **2 (3-4-5)** rnds even. Work Chart II to end of chart, *reading rnds from right to left* and noting 8-st rep will be worked **22 (26-27-29)** times. **66 (78-81-87)** sts. Break MC and A.

Change to set of four smaller needles.

With B, knit **1 (1-2-2)** rnd(s) even.

**Next rnd:** With B, knit dec **0 (4-3-5)** sts evenly around. **66 (74-78-82)** sts.

Proceed in (K1. P1) ribbing as given for Body for 2½" [6 cm]. Cast off in ribbing.

Graft underarm sts.

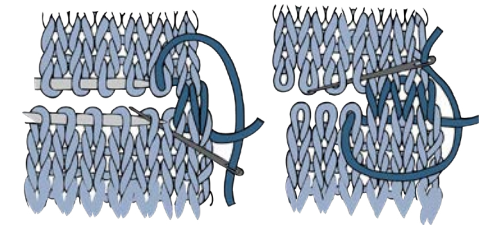


Chart I

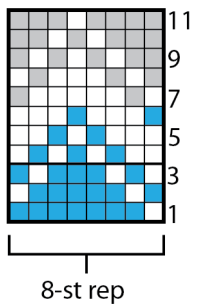
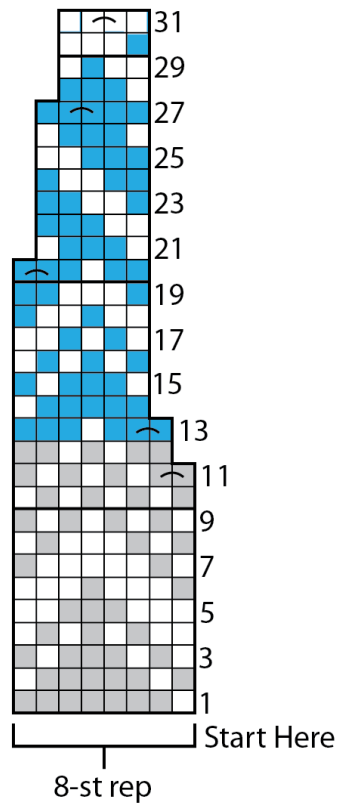


Chart II Yoke



Key

- = MC
- = Contrast A
- = Contrast B
- = With MC, K2tog
- = With A, K2tog

