

 KNIT | SKILL LEVEL: **INTERMEDIATE**

## ABBREVIATIONS

**Alt** = Alternate

**Approx** = Approximately

**Beg** = Begin(ning)

**Cont** = Continue

**Dec** = Decreasing

**Inc** = Increasing

**K** = Knit

**K2(3)tog** = Knit next 2(3) stitches together

**P** = Purl

**Pat** = Pattern

**Pss0** = Pass slipped stitch over

**Rep** = Repeat

**RS** = Right side

**Sl1** = Slip next stitch knitwise

**Ssk** = Slip next 2 stitches knitwise one at a time. Pass them back onto left-hand needle, then knit through back loops together

**St(s)** = Stitch(es)

**WS** = Wrong side

**Yo** = Yarn over

## MEASUREMENTS

Approx 40" [101.5 cm] wide x 44" [112 cm] long.

## GAUGE

8 sts and 13 rows = 4" [10 cm] in stocking st.

## INSTRUCTIONS

Cast on 73 sts.

Knit 5 rows (garter st), noting 1st row is WS and inc 8 sts evenly across last row. 81 sts (multiple of 14 sts + 11). See chart on page 2.

Proceed in pat as follows:

**1st row:** (RS). K6. \*K2tog. yo. K1. yo. ssk. K3. K2tog. yo. K4. Rep from \* to last 5 sts. K5.

**2nd and alt rows:** K4. Purl to last 4 sts. K4.

**3rd row:** K5. \*K2tog. yo. K3. yo. ssk. K1. K2tog. yo. K4. Rep from \* to last 6 sts. K6.

**5th row:** K4. K2tog. yo. \*K5. yo. Sl1. K2tog. pss0. yo. K4. K2tog. yo. Rep from \* to last 5 sts. K5.

**7th row:** K6. \*yo. ssk. K4. yo. ssk. K3. K2tog. yo. K1. Rep from \* to last 5 sts. K5.



## MATERIALS

**Bernat® Baby Blanket Dappled™** (10.5 oz/300 g; 220 yds/201 m)  
Wandering Blue (15005) **3 balls**

Size U.S. 11 (8 mm) circular knitting needle 36" [91.5 cm] long **or size needed to obtain gauge.**

## BERNAT® OVER THE GARDEN WALL KNIT BLANKET | KNIT

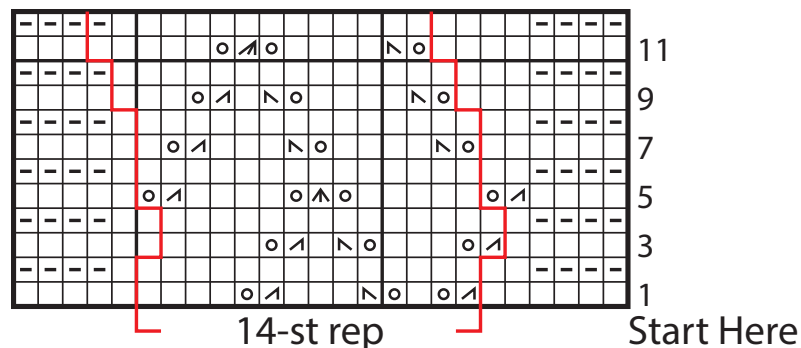
**9th row:** K7. \*yo. ssk. K4. yo. ssk. K1. K2tog. yo. K3. Rep from \* to last 4 sts. K4.

**11th row:** K8. \*yo. ssk. K4. yo. K3tog. yo. K5. Rep from \* to last 3 sts. K3.

**12th row:** As 2nd row.  
These 12 rows form pat.

Cont in pat, maintaining 4 garter sts on either side, until Blanket measures 42" [106.5 cm], ending on a WS row of pat.

**Next row:** (RS). Knit, dec 8 sts evenly across. 73 sts.  
Knit 4 rows.  
Cast off loosely (WS).



### Key

- = Knit on RS rows. Purl on WS rows.
- ◻ = Purl on RS rows. Knit on WS rows.
- ▧ = K2tog.
- ▨ = K3tog.
- ▩ = Sl1. K2tog. pssso.
- = ssk
- ◉ = yo

