



VERSION 1



VERSION 2

MATERIALS

Bernat® Softee® Baby™ (5 oz/140 g; 362 yds/331 m)

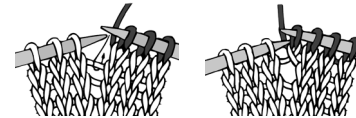
Size	6	12	18	mos
Version 1				
Gray Marl (30045)	2	2	2	balls
Version 2				
Little Red Wagon (54004)	2	2	2	balls

Size U.S. 6 (4 mm) circular knitting needle 29" [74 cm] long **or size needed to obtain gauge.** Stitch marker. 2 stitch holders. 1 button.

 **KNIT | SKILL LEVEL: INTERMEDIATE**

ABBREVIATIONS

- Alt** = Alternate
- Approx** = Approximately
- Beg** = Begin(ning)
- Cont** = Continue(ity)
- Dec** = Decrease(d)
- Inc** = Increase(d)
- K** = Knit
- K2tog** = Knit next 2 stitches together
- M1** = Make 1 stitch by picking up horizontal loop lying before next stitch and knitting into back of loop
- P** = Purl
- Pat** = Pattern
- PM** = Place marker
- Pssso** = Pass slipped stitch over
- Rem** = Remain(ing)
- Rep** = Repeat
- RS** = Right side
- Sl1** = Slip next stitch knitwise
- SM** = Slip marker
- Ssk** = Slip next 2 stitches knitwise one at a time. Pass them back onto left-hand needle, then knit through back loops together.
- St(s)** = Stitch(es)
- WS** = Wrong side
- Yo** = Yarn over



SIZES

To fit chest measurement

6 mos	17" [43 cm]
12 mos	18" [45.5 cm]
18 mos	19" [48 cm]

Finished chest

6 mos	21" [53.5 cm]
12 mos	22" [56 cm]
18 mos	23" [58.5 cm]

GAUGE

22 sts and 30 rows = 4" [10 cm] in stocking st.

INSTRUCTIONS

The instructions are written for smaller size. If changes are necessary for larger sizes the instructions will be written thus (.). Numbers for each size are shown in the same color throughout the pattern. When only one number is given in black, it applies to all sizes.

Note: Dress is worked in one piece from neck edge down.

DRESS

Beg at neck edge, cast on **51 (57-57)** sts. **Do not** join. Working back and forth across needle in rows to establish back neck opening, proceed as follows:

1st row: (RS). *K1. P1. Rep from * to last st. K1.

2nd row: Rep last row for Seed St Pat once more.

3rd row (buttonhole row): Pat across 2 sts. Cast off 2 sts. Pat to end of row.

4th row: Work in pat, casting on 2 sts over cast off sts.

Proceed in Lace Pat as follows (See Chart I on page 3):

1st row: (RS). (K1. P1) twice. (P1. K2. yo. K1. yo. K2) **7 (8-8)** times. P1. (P1. K1) twice. **65 (73-73)** sts.

2nd and alt rows: (K1. P1) twice. Knit all knit sts and purl all purl sts as they appear to last 4 sts. (P1. K1) twice.

3rd row: (K1. P1) twice. (P1. K3. yo. K1. yo. K3) **7 (8-8)** times. P1. (P1. K1) twice. **79 (89-89)** sts.

5th row: (K1. P1) twice. (P1. K4. yo. K1. yo. K4) **7 (8-8)** times. P1. (P1. K1) twice. **93 (105-105)** sts.

7th row: (K1. P1) twice. (P1. K5. yo. K1. yo. K5) **7 (8-8)** times. P1. (P1. K1) twice. **107 (121-121)** sts.

9th row: (K1. P1) twice. (P1. yo. ssk. K4. yo. K1. yo. K4. K2tog. yo) **7 (8-8)** times. P1. (P1. K1) twice. **121 (137-137)** sts.

11th row: (K1. P1) twice. (P2. yo. ssk. K4. yo. K1. yo. K4. K2tog. yo. P1) **7 (8-8)** times. P1. (P1. K1) twice. **135 (153-153)** sts.

12th row: (WS). Cast off 4 sts. Knit all knit sts and purl all purl sts as they appear to last 4 sts. (P1. K1) twice. **131 (149-149)** sts.

Join sts in rnd, placing marker on first st.

Rem rnds are worked with RS facing.

13th rnd: (K1. P1) twice. (K1. P2. yo. ssk. K9. K2tog. yo. P2) **7 (8-8)** times. P1.

14th and alt rnds: (P1. K1) twice. Knit all knit sts and purl all purl sts as they appear to end of rnd.

15th rnd: (K1. P1) twice. (K2. P2. yo. ssk. K7. K2tog. yo. P2. K1) **7 (8-8)** times. P1.

17th rnd: (K1. P1) twice. (K3. P2. yo. ssk. K5. K2tog. yo. P2. K2) **7 (8-8)** times. P1.

19th rnd: (K1. P1) twice. (K4. P2. yo. ssk. K3. K2tog. yo. P2. K3) **7 (8-8)** times. P1.

21st rnd: (K1. P1) twice. (K5. P2. yo. ssk. K1. K2tog. yo. P2. K4) **7 (8-8)** times. P1.

23rd rnd: (K1. P1) twice. (K6. yo. P2. yo. Sl1. K2tog. psso. yo. P2. yo. K5) **7 (8-8)** times. P1. **145 (165-165)** sts.

25th rnd: (K1. P1) twice. (K8. P5. K7) **7 (8-8)** times. P1.

27th rnd: (K1. P1) twice. (K9. yo. P3. yo. K8) **7 (8-8)** times. P1. **159 (181-181)** sts.

29th rnd: (K1. P1) twice. (K11. P1. K10) **7 (8-8)** times. P1.

30th rnd: (K1. P1) twice. Knit to end of rnd.

Sizes 12 and 18 mos sizes only: Rep last rnd **2 (4)** times more.

All sizes: Divide for sleeves: Skip first **25 (30-30)** sts. Slip next **33 (35-35)** sts onto st holder for Left Sleeve. Skip next **47 (55-55)** sts. Slip next **33 (35-35)** sts onto st holder for Right Sleeve. Leave rem **21 (26-26)** sts on circular

needle and proceed as follows across rem **93 (111-111)** sts for Skirt. Place marker at end of rnd.

Size 6 mos size only: Next rnd: (K1. P1) twice. *K8. M1. Rep from * to last st. K1. 104 sts.

Sizes 12 and 18 mos sizes only: (K1. P1) twice. Knit to last st. Inc 1 st in last st. 112 sts.

All sizes: Skirt Waistband: **1st rnd:** *P1. K1. Rep from * around.

2nd rnd: *K1. P1. Rep from * around.

3rd to 6th rnds: Rep 1st and 2nd rnds twice more.

Beg shaping: 1st rnd: K4. M1. *P1. M1. K7. M1. Rep from * to last 4 sts. P1. M1. K3. **130 (140-140)** sts.

2nd to 12th rnds: K5. *P1. K9. Rep from * to last 5 sts. P1. K4.

13th rnd: K5. M1. *P1. M1. K9. M1. Rep from * to last 5 sts. P1. M1. K4. **156 (168-168)** sts.

14th to 24th rnds: K6. *P1. K11. Rep from * to last 6 sts. P1. K5.

25th rnd: K6. M1. *P1. M1. K11. M1. Rep from * to last 6 sts. P1. M1. K5. **182 (196-196)** sts.

26th to 36th rnds: K7. *P1. K13. Rep from * to last 7 sts. P1. K6.

37th rnd: K7. M1. *P1. M1. K13. M1. Rep from * to last 7 sts. P1. M1. K6. **208 (224-224)** sts.

38th rnd: K8. *P1. K15. Rep from * to last 8 sts. P1. K7.

Rep last rnd until work from marker measures **7 (7½-8½)"** [**18 (19-21.5)** cm].

Next rnd: K8. Move marker on next st to indicate beg of rnd and proceed as follows:

Edging (See Chart II): 1st rnd: *P1. K5. K2tog. yo. K1. yo. ssk. K5. Rep from * around.

2nd and alt rnds: *P1. K15. Rep from * around.

3rd rnd: *P1. K4. K2tog. yo. K3. yo. ssk. K4. Rep from * around.

5th rnd: *P1. K3. (K2tog. yo) twice. K1. (yo. ssk) twice. K3. Rep from * around.

7th rnd: *P1. K2. (K2tog. yo) twice. K3. (yo. ssk) twice. K2. Rep from * around.

9th rnd: *P1. K1. (K2tog. yo) 3 times. K1. (yo. ssk) 3 times. K1. Rep from * around.

11th rnd: As 7th rnd.

13th rnd: *P1. K3. K2tog. yo. K5. yo. ssk. K3. Rep from * around.

15th rnd: *P1. K2. K2tog. yo. K1. yo. ssk. K1. K2tog. yo. K1. yo. ssk. K2. Rep from * around.

17th rnd: *P1. K1. K2tog. yo. K3. yo. Sl1. K2tog. pss0. yo. K3. yo. ssk. K1.

18th rnd: As 2nd rnd.

19th rnd: *K1. P1. Rep from * around.

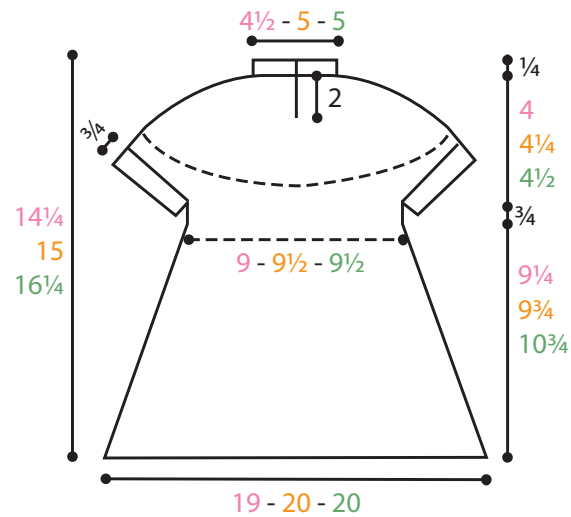
20th rnd: *P1. K1. Rep from * around.

21st to 24th rnds: Rep last 2 rnds twice more for Seed St Pat. Cast off in pat.

Sleeve Edging: With RS facing, **K33 (35-35)** from Sleeve st holder. **Do not join.** Working back and forth across needle in rows, proceed as follows:

1st row: (WS). *K1. P1. Rep from * to last st. K1.

Rep last row for Seed St Pat 4 times more. Cast off in pat. Sew sleeve edging seam. Sew cast off sts from 12th row of Yoke in position on WS. Sew button in position to correspond to buttonhole.



Key

- = Knit on RS rows.
Purl on WS rows.
- ▣ = Purl on RS rows.
Knit on WS rows.
- ⊠ = K2tog
- ⊞ = ssk
- ⊚ = yo
- ⊠ = Sl1. K2tog. pss0

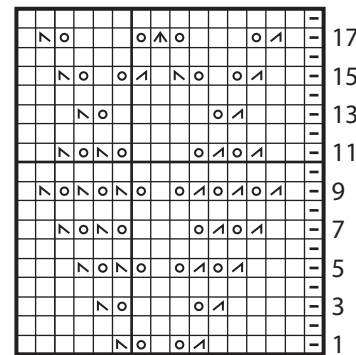


Chart II

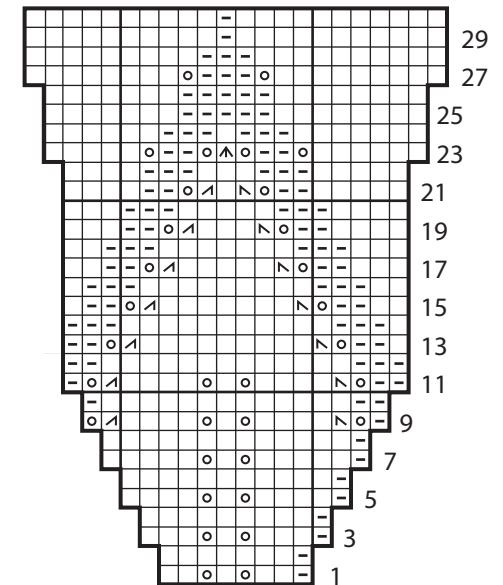


Chart I