



**MATERIALS**

**Lily® Sugar'n Cream®** (2.5 oz/70.9 g; 120 yds/109 m)  
**Main Color (MC)** Ecrú (00004) **1 ball or 44 yds/40.5 m**  
**Contrast A** Tea Rose (00042) **or** Teal (01133) **or** Meadow (01135) **or** Bright Navy (00009) **or** Light Blue (00026) **or** Orchid (01137) **or** Robin's Egg (01215) **or** Warm Brown (01130) **1 ball or 25 yds/23 m**  
**Note:** 1 ball each of MC and A will make 2 Dishcloths.  
 Size U.S. H/8 (5 mm) crochet hook **or size needed to obtain gauge.**

**ABBREVIATIONS**

<b>Approx</b> =	<b>Rep</b> = Repeat	<b>St(s)</b> = Stitch(es)
Approximately	<b>RS</b> = Right side	<b>WS</b> = Wrong side
<b>Ch</b> = Chain(s)	<b>Sc</b> = Single crochet	
<b>Cont</b> = Continue(ity)	<b>Sl st</b> = Slip stitch	



CROCHET | SKILL LEVEL: **EASY**

**MEASUREMENT**

Approx 8½" [21.5 cm] square.

**GAUGE**

13 sc and 14 rows = 4" [10 cm].

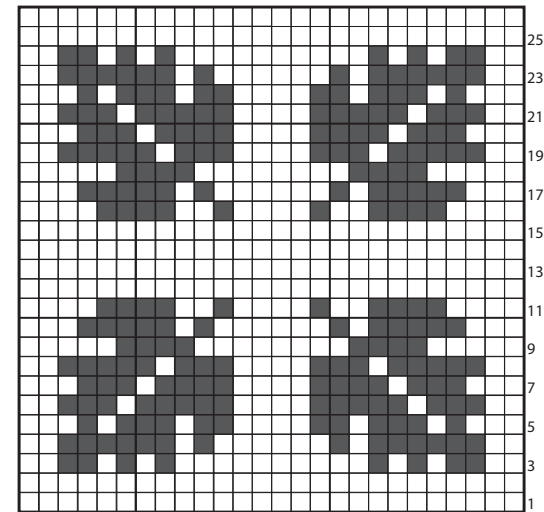
**INSTRUCTIONS**

With MC, ch 27.  
 Work Chart, noting each square of chart is equal to 1 sc and reading **RS** rows from **right** to left and **WS** rows from left to right. Carry color not in use across top of entire previous row and work sts around it. This will ensure even gauge as all sts will be worked around an extra strand of yarn held across top of previous row. Carry both colors up side of work.  
**1st row:** (RS). 1 sc in 2nd ch from hook. 1 sc in each ch to end of chain. Turn. 26 sc.  
**2nd row:** Ch 1. 1 sc in each sc to end of row. Turn.  
 First 2 rows of Chart are complete.

Rep 2nd row and cont working Chart until 26th row of Chart is complete.  
 Fasten off.

**Border:** With RS facing, join MC with sl st to any corner.

**1st rnd:** Ch 1. Work sc evenly around outer edge, working 3 sc in each corner. Join with sl st to first sc. Fasten off.



Key  
 □ = Main Color (MC)  
 ■ = Contrast A