



MATERIALS

Caron® x Pantone™ (3.5 oz/100 g; 127 yds/116 m)

Version 1 or Version 2
Purple Pops (01017) **1 braid**

Version 3
Provincial Lilac (01013) **1 braid**

Set of 4 sizes U.S. 9 (5.5 mm) and U.S. 10 (6 mm) double-pointed knitting needles **or size needed to obtain gauge.** Stitch marker.

Version 1

A - 13-3406	B - 16-3307	C - 18-3838	D - 16-0737	E - 19-4324
-------------	-------------	-------------	-------------	-------------

Version 2

A - 19-4324	B - 13-3406	C - 16-3307	D - 18-3838	E - 16-0737
-------------	-------------	-------------	-------------	-------------

Version 3

A - 15-3912	B - 11-0608	C - 16-1412	D - 18-1404	E - 14-4105
-------------	-------------	-------------	-------------	-------------

 KNIT | SKILL LEVEL: **INTERMEDIATE**

ABBREVIATIONS

- Alt** = Alternate
- Beg** = Begin(ning)
- Center Dec** (worked over 3 sts) = Slip next 2 stitches as if to K2tog. K1, then pass slipped sts over knit st – center of 3 sts should be on top of decrease, 2 sts have been decreased
- Cont** = Continue(ity)
- K** = Knit
- K2tog** = Knit next 2 stitches together

- P** = Purl
- Rem** = Remain(ing)
- Rep = Rnd(s)** = Round(s)
- Rep** = Repeat
- Ssk** = Slip next 2 stitches knitwise one at a time. Pass them back onto left-hand needle, then knit through back loops together
- St(s)** = Stitch(es)

SIZE

One size to fit adult.

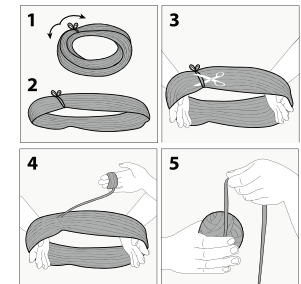
GAUGE

15 sts and 20 rows = 4" [10 cm] with larger needles in stocking stitch.

INSTRUCTIONS

Notes:

- Before working with Caron® x Pantone™ multi-shade yarn braid, separate each color link and wind into 5 separate balls for each braid.



- Each color link will be referenced by its Pantone™ color # (see label).
- Designate each different shade of the 5 separate yarn balls as Contrast A, B, C, D and E as noted in Materials section (or as desired).
- Due to finite amount of yarn in each shade, pattern gauge must be matched to ensure successful results
- When working from charts, carry yarn not in use loosely across WS of work but never over more than 5 sts. When it must pass over more than 5 sts, weave it over and under color not in use. The colors are never twisted around one another.

With A and set of smaller double-pointed needles, cast on 72 sts. Divide sts evenly over 3 needles (24-24-24). Join in rnd, placing marker on first st.

1st to 10th rnds: *K2. P2. Rep from * around. Break A.

Change to B and larger set of needles.

With B, knit 8 rnds.

Knit rnds 1 to 16 of Chart, reading rows from right to left, noting 4-st rep will be worked 18 times. Break B and C.

With D, shape top as follows:

1st rnd: *K8. Center Dec. K7. Rep from * around. 64 sts.

2nd and alt rnds: Knit.

3rd rnd: *K7. Center Dec. K6. Rep from * around. 56 sts.

5th rnd: *K6. Center Dec. K5. Rep from * around. 48 sts.

7th rnd: *K5. Center Dec. K4. Rep from * around. 40 sts.

9th rnd: *K4. Center Dec. K3. Rep from * around. 32 sts.

11th rnd: *K3. Center Dec. K2. Rep from * around. 24 sts.

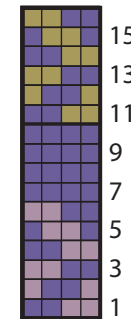
12th rnd: *K2tog. Rep from * around. 12 sts.

Break yarn, leaving a long end. Thread end through rem sts and draw up tightly. Fasten securely

Pompom: Wind E around 4 fingers approx 100 times. Remove from fingers and tie tightly in center. Cut through each side of loops. Trim to a smooth round shape. Sew to top of Hat.

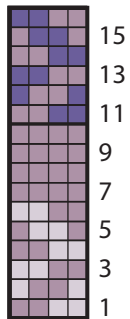
Version 1 Chart

- Key
- Contrast B
 - Contrast C
 - Contrast D



Version 2 Chart

- Key
- Contrast B
 - Contrast C
 - Contrast D



Version 3 Chart

- Key
- Contrast B
 - Contrast C
 - Contrast D

