



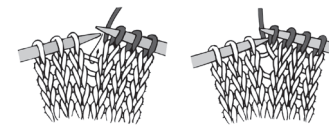
KNIT | SKILL LEVEL: INTERMEDIATE

## ABBREVIATIONS

**Alt** = Alternate  
**Approx** = Approximately  
**Beg** = Beginning  
**C4B** = Slip next 2 stitches onto cable needle and leave at back of work. K2, then K2 from cable needle  
**C4F** = Slip next 2 stitches onto cable needle and leave at front of work. K2, then K2 from cable needle  
**Cont** = Continue(ity)

**K** = Knit  
**K2tog** = Knit next 2 stitches together  
**Kfb** = Increase 1 stitch by knitting into front and back of next stitch  
**M1** = Make 1 stitch by picking up horizontal loop lying before next stitch from *back to front* and knitting into front of loop

**P** = Purl  
**P2tog** = Purl next 2 stitches together  
**Pat** = Pattern  
**PM** = Place marker  
**Rem** = Remaining  
**Rep** = Repeat  
**Rnd(s)** = Round(s)  
**St(s)** = Stitch(es)  
**Tog** = Together



## SIZE

One size to fit Adult.

## GAUGE

18 sts and 24 rows = 4" [10 cm] in stocking st.

## INSTRUCTIONS

With circular needle, cast on 100 sts. Join in rnd. PM for beg of rnd.

**1st rnd:** \*K2. P2. Rep from \* around. Rep last rnd of (K2. P2) ribbing for 3" [7.5 cm].

**Next rnd:** \*K5. M1. Rep from \* around. 120 sts.

## MATERIALS

**Caron® Simply Soft® Heathers™** (5 oz/141.7 g; 250 yds/228 m)  
 Gray Heather (H9509) **1 ball**

Size U.S. 8 (5 mm) circular knitting needle 16" [40 cm] long. Set of four size U.S. 8 (5 mm) double-pointed knitting needles **or size needed to obtain gauge.** Cable needle. Stitch marker.

Proceed in Cable Pat as follows:  
(multiple of 8 sts).

See Chart shown right.

**1st rnd:** \*C4F. P4. Rep from \* around.

**2nd and 3rd rnds:** \*K4. P4. Rep from \* around.

**4th rnd:** K2. \*C4F. C4B. Rep from \* to last 6 sts. C4F. *Working over last 2 sts and first 2 sts of next rnd,* C4B. **Do not** replace marker. Keep marker at center of last C4B.

**5th rnd:** There are 2 sts after last C4B counts as "P2". P2. \*K4. P4. Rep from \* to last 4 sts. K4.

**6th rnd:** \*P4. K4. Rep from \* around.

**7th rnd:** \*P4. C4F. Rep from \* around.

**8th and 9th rnds:** As 5th rnd.

**10th rnd:** K2. \*C4B. C4F. Rep from \* to last 6 sts. C4B. *Working over last 2 sts and first 2 sts of next rnd,* C4F. **Do not** replace marker. Keep marker at center of last C4F.

**11th rnd:** There are 2 sts after last C4F counts as "K2". K2. \*P4. K4. Rep from \* to last 4 sts. P4.

**12th rnds:** As 2nd rnd.

Rep 1st to 12th rnds for Cable Pat until work from beg measures approx 10" [25.5 cm], ending on 12th rnd.

**Note:** Move to double-pointed needles for top shaping.

**Shape crown: 1st rnd:** \*C4F. P1. P2tog. P1. Rep from \* around. 105 sts.

**2nd and alt rnds:** Knit all knit sts and purl all purl sts.

**3rd rnd:** \*K4. P1. P2tog. Rep from \* around. 90 sts.

**5th rnd:** \*K4. P2tog. Rep from \* around. 75 sts.

**7th rnd:** \*K3. K2tog. Rep from \* around. 60 sts.

**9th rnd:** \*K2. K2tog. Rep from \* around. 45 sts.

**11th rnd:** \*K1. K2tog. Rep from \* around. 30 sts.

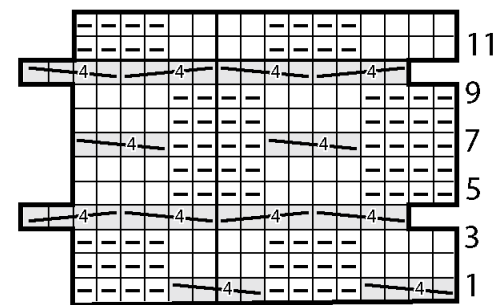
**12th rnd:** As 2nd rnd.

Break yarn, leaving a long end. Thread end through rem sts. Pull tightly. Fasten securely.

### Pom-pom

Wind yarn around 3 fingers 100 times. Tie tightly in the middle and leave a long end for attaching to Hat. Cut loops at both ends and trim to smooth round shape. Sew securely to top of Hat.

Cable Panel



Start Here

### Key

□ = Knit

◻ = Purl

= C4B

= C4F

