



# stitch Nation

BY DEBBIE STOLLER™



## snowtracks cap

snoizō



Designed by Timothy Peters.

Directions are for size Small; changes for sizes Medium/Large are in parentheses.

To Fit Head Circumference: 22" (24").

Size Small fits as a skullcap. Size Medium/Large fits as a beanie with upturned brim.

STITCH NATION by Debbie Stoller™ "Bamboo Ewe™": 1 ball 5410 Mercury.

Circular Knitting Needles: 3.75 [US 5] and 4.5mm [US 7] 16" long.  
Double Pointed Needles: 1 set 4.5mm [US 7].  
Place marker, yarn needle.

GAUGE: 28 sts = 4"; 26 rounds = 4" in Rib, slightly stretched.  
CHECK YOUR GAUGE. Use any size needle to obtain the gauge.

### SPECIAL ABBREVIATIONS

2/2 LPC = Slip next 2 sts to cable needle, hold to front; p2, k2 from cable needle.

2/2 RPC = Slip next 2 sts to cable needle, hold to back; k2, p2 from cable needle.

2/2 LC = slip next 2 sts to cable needle, hold to front; k2; k2 from cable needle.

2/2 RC = slip next 2 sts to cable needle, hold to back; k2; k2 from cable needle.

Ssk = Slip next 2 sts knitwise, one at a time to right needle; insert point of left needle into the fronts of these 2 sts and knit them together from this position.

Ssp = Slip next 2 sts knitwise, one at a time to right hand needle; pass them back to left hand needle and p2togtbl.

### NOTE

Hat is worked in the round. As stitches are decreased and no longer fit on circular needle, divide them among 3 double pointed needles to complete.

**K2, p2 Rib (worked over a multiple of 4 sts)**

**Round 1 (Right Side):** \* K2, p2; repeat from \* around.  
Repeat Round 1 for K2, p2 rib.

### CAP

With smaller needles, cast on 100 (120) sts. Place marker for beginning of round and join, being careful not to twist sts. Work in K2, p2 rib for 1½ (3½)".

**Next Round (Inc):** [(k2, p2) twice, k1, k into front and back of st, p1, p into front and back of st, (k2, p2) twice] 5 (6) times—110 (132) sts

**Next Round:** Work even in rib pattern as established, purll increased sts.

### Setup Cable Pattern

Change to larger needles, begin with Round 1, work Cable pattern from chart or instructions below:

**Round 1:** [K2, p2, k2, p2, 2/2 LPC, 2/2 RPC, p2, k2, p2] 5 (6) times.

For more ideas & inspiration -

[www.redheart.com](http://www.redheart.com)

[www.stitchnationyarn.com](http://www.stitchnationyarn.com)

[www.coatsandclark.com](http://www.coatsandclark.com)



# stitch Nation

BY DEBBIE STOLLER™

Round 2 and all even-numbered rounds: K the knit sts and p the purl sts.

Round 3: [K2, p2, k2, p4, 2/2 LC, p4, k2, p2] 5 (6) times.

Round 5: [K2, p2, (2/2 LPC, 2/2 RPC) twice, p2] 5 (6) times.

Round 7: [K2, p4, 2/2 RC, p4, 2/2 RC, p4] 5 (6) times.

Round 9: [K2, p2, (2/2 RPC, 2/2 LPC) twice, p2] 5 (6) times.

Round 11: Repeat Round 3.

Round 13: Repeat Round 5.

Round 15: Repeat Round 7.

Round 17: Repeat Round 9.

Round 19: Repeat Round 3.

Rounds 20-22: K the knit sts and p the purl sts.

Round 23: Repeat Round 3.

Round 25: [K2, p2, k2, p2, 2/2 RPC, 2/2 LPC, p2, k2, p2] 5 (6) times.

Rounds 26-28: K the knit sts and p the purl sts.

## Shape Crown

Round 1: [K2, (p2, k2) twice, ssp, p2tog, (k2, p2) twice] 5 (6) times—100 (120) sts.

Round 2 and even numbered rounds: K the knit sts and p the purl sts.

Round 3: [k2, p2tog, (k2, p2) 3 times, k2, p2tog] 5 (6) times. 90 (108) sts.

Round 5: [K2, p1, k2, p2tog, k2, p2, k2, p2tog, k2, p1] 5 (6) times—80 (96) sts.

Round 7: [K2, (p1, k2) twice, p2tog, (k2, p1) twice] 5 (6) times—75 (90) sts.

Round 9: [(K2, p1) twice, ssk, p1, k2tog, p1, k2, p1] 5 (6) times—65 (78) sts.

Round 11: [K2, p1, ssk, (p1, k1) twice, p1, k2tog, p1] 5 (6) times—55 (66) sts.

Round 13: [K2tog, p1, (k1, p1) 4 times] 5 (6) times—50 (60) sts.

Round 15: [Ssk, k1, p1, ssk, k1, p1, ssk] 5 (6) times—35 (42) sts.

Round 16: [K2, k2tog, k1, k2tog] 5 (6) times—25 (30) sts.

Round 17: [K2tog, k1, k2tog] 5 (6) times—15 (18) sts.

Round 18: K2tog around, k1 (0)—8 (9) sts.

## FINISHING

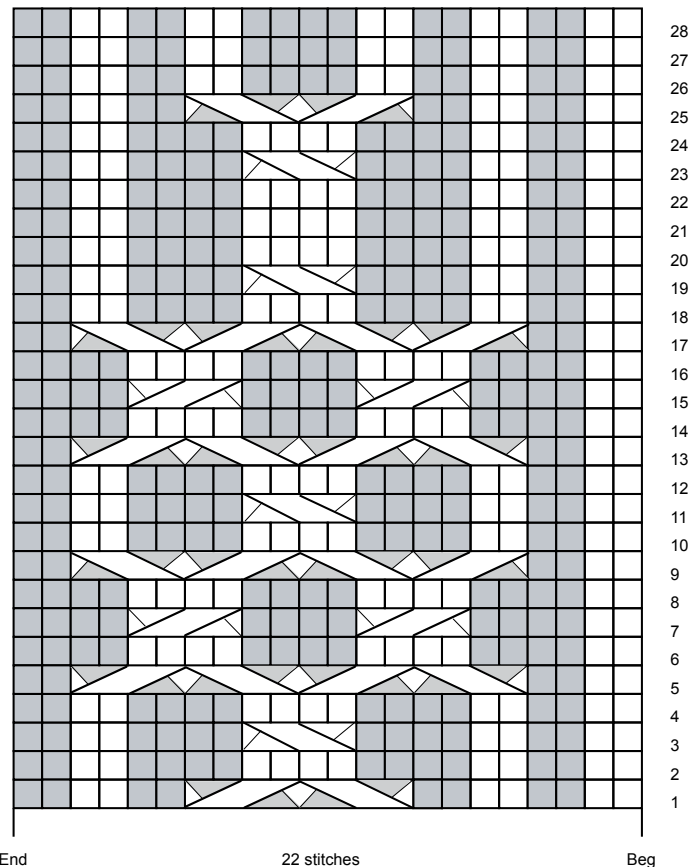
Cut yarn leaving long tail. Thread tail through remaining sts and pull tightly to secure. Weave in yarn ends.



STITCH NATION by Debbie Stoller™  
"Bamboo Ewe™" Art. T101 available in  
3.5 oz (100 g); 177 yd (162 m) balls.

ABBREVIATIONS: K = knit; mm = millimeters; p = purl; st(s) = stitch(es); tbl = through back loop; tog = together; [ ] = work directions in brackets the number of times specified; \* or \*\* = repeat whatever follows the \* or \*\* as indicated.

CABLE CHART



## STITCH KEY



Knit



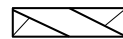
Purl



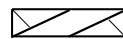
2/2 LPC = Slip 2 sts to cable needle, hold to front, p2, k2 from cable needle.



2/2 RPC = Slip 2 sts to cable needle, hold to back, k2, p2 from cable needle.



2/2 LC = Slip 2 sts to cable needle, hold to front, k2, k2 from cable needle.



2/2 RC = Slip 2 sts to cable needle, hold to back, k2, k2 from cable needle.

For more ideas & inspiration -

[www.redheart.com](http://www.redheart.com)

[www.stitchnationyarn.com](http://www.stitchnationyarn.com)

[www.coatsandclark.com](http://www.coatsandclark.com)