



**LILY® SUGAR'N CREAM®
SKELETON BANNER
(TO KNIT)**

MEASUREMENTS

Approx 18" x 19" [45.5 x 48 cm] excluding loops.

MATERIALS

Lily® Sugar'n Cream® (70.9 g/2.5 oz; 109 m/120 yds)

Contrast A (00002 Black) **4 balls**

Contrast B (00001 White) **2 balls**

Size 5 mm (U.S. 8) knitting needles **or size needed to obtain gauge.**

Wooden dowel for hanging. String.

GAUGE

18 sts and 24 rows = 4" [10 cm] in stocking st.

ABBREVIATIONS

www.sugarncream.com/abbreviations

Alt = Alternate(ing).

Approx = Approximately.

Beg = Beginning.

Cont = Continue(ity).

Inc = Increase 1 stitch by knitting into front and back of next stitch.

K = Knit.

P = Purl.

Pat = Pattern.

Rem = Remaining.

Rep = Repeat.

RS = Right side.

St(s) = Stitch(es).

WS = Wrong side.

INSTRUCTIONS

Bottom Border: With A, cast on 3 sts.

****1st row:** (WS). Knit.

2nd row: Knit to last st. Inc 1 st in last st.

Rep last 2 rows 8 times more. 12 sts.

Next row: (WS). Knit.***

Next row: Cast off 9 sts. 3 sts rem.**

Rep from ** to ** until work from beg measures approx 16" [40.5 cm], ending at ***. Cast off.

Turn bottom border sideways. With RS facing and A, pick up and knit 73 sts evenly across long edge.

Next row: (WS). Knit.

Proceed in Side Border Pat as follows:

1st and alt rows: (RS). Knit to last st. Inc 1 st in last st.

2nd row: K2. Purl to last st. Inc 1 st in last st.

4th row: K3. Purl to last 2 sts. K1. Inc 1 st in last st.

6th row: K4. Purl to last 3 sts. K2. Inc 1 st in last st.

8th row: K5. Purl to last 4 sts. K3. Inc 1 st in last st.

10th row: K6. Purl to last 5 sts. K4. Inc 1 st in last st.

12th row: K7. Purl to last 6 sts. K5. Inc 1 st in last st.

14th row: K8. Purl to last 7 sts. K6. Inc 1 st in last st.

16th row: K9. Purl to last 8 sts. K7. Inc 1 st in last st.

18th row: Cast off 9 sts. K1. Purl to last 9 sts. K8. Inc 1 st in last st.

19th row: Cast off 9 sts. Knit to end of row.

20th row: K1. Purl to last st. K1.

These 20 rows form Side Border Pat.



Place Chart: Keeping cont of Side Border Pat, proceed as follows:

1st row: (RS). With A, K11. Work 1st row of Chart, reading row from **right** to left. With A, knit to last st. Inc 1 st in last st.

2nd row: With A, K2. P11. Work 2nd row of Chart, reading row from **left** to right. P10. Inc 1 st in last st.

1st and 2nd rows of Side Border Pat are complete. Chart is now in position.

Cont in Side Border Pat and work Chart to end of Chart.

With A, cont in Side Border Pat until work from pick up row measures approx 18" [45.5 cm], ending with 19th row of Side Border Pat. 73 sts. Beg with WS row, knit 3 rows.

Hanging loops:

1st row: (RS). K9. *Cast off 7 sts. K9 (including st on needle after cast off). Rep from * 3 times more.

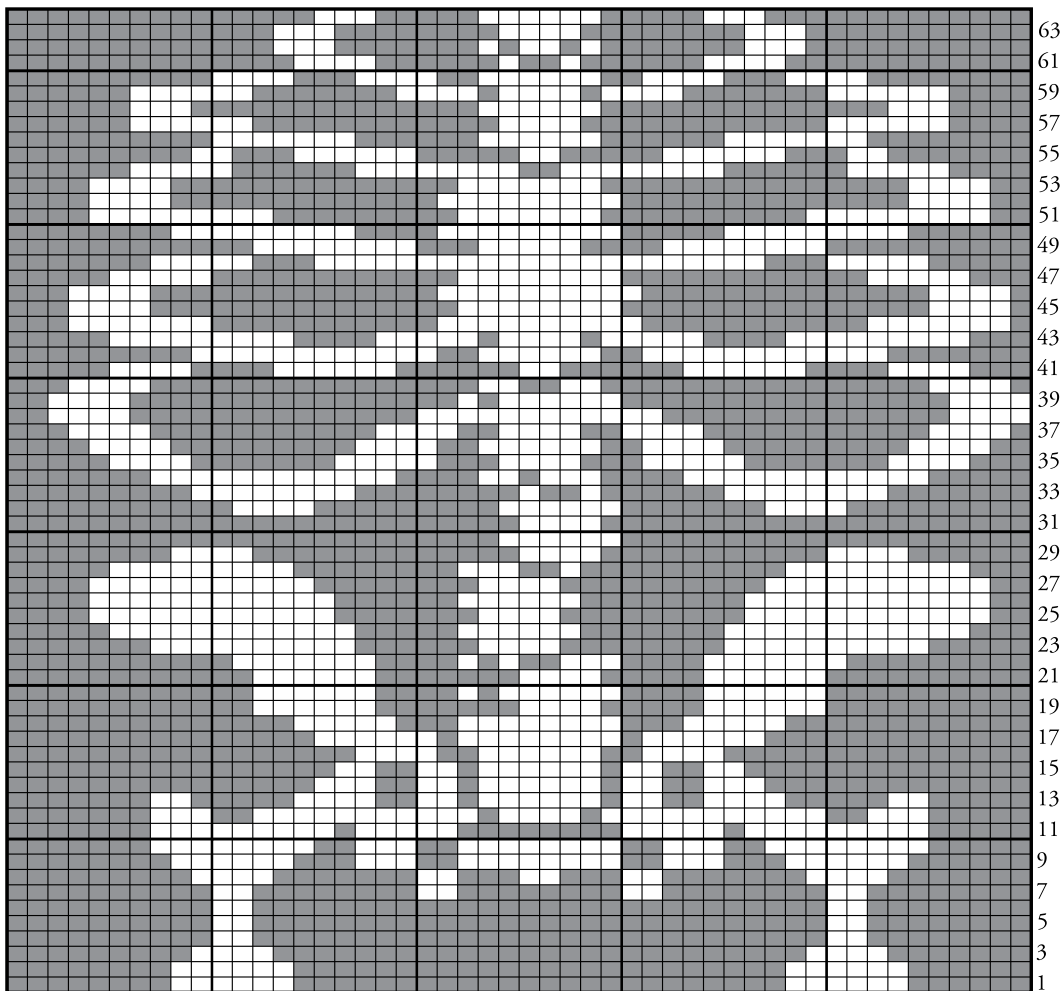
Working on last 9 sts for first loop, proceed in garter st (knit every row) until loop measures 7" [18 cm], ending with a RS row. Cast off.

(Rejoin A to next 9 sts. Rep as for first loop) 4 times.

Fold cast off edges to WS and sew in position.

Insert dowel through hanging loops and attach string to hang banner as shown in photo.

CHART



START HERE

KEY

- = Contrast A
- = Contrast B



P.O. Box 40 Listowel ON N4W 3H3