



## PATONS® LACE SEQUIN SHAWL

### MEASUREMENTS

Approx 14½ in [37 cm] wide x 55 in [139.5 cm] long.

### MATERIALS

Patons® Lace Sequin (70 g/2.5 oz; 314 m/344 yds)  
37005 (Crystal) **3 balls**

Size 4 mm (U.S. 6) knitting needles **or size needed to obtain tension.**

### TENSION

24 sts and 30 rows = 4 ins [10 cm] in stocking st.

## INSTRUCTIONS

Cast on 87 sts.

Work 5 rows in garter st (knit every row), noting 1st row is WS and inc 17 sts evenly across last row. 104 sts.

**1st row:** (RS). K4. C4F. \*(P2. yo. ssk) twice. P2. C8B. C8F. Rep from \* twice more. (P2. yo. ssk) twice. P2. C4F. K4.

**2nd and alt rows:** K4. P4. \*(K2. P2) twice. K2. P16. Rep from \* twice more. (K2. P2) twice. K2. P4. K4.

**3rd row:** K8. \*(P2. K2tog. yo) twice. P2. K16. Rep from \* twice more. (P2. K2tog. yo) twice. P2. K8.

**5th row:** K8. \*(P2. yo. ssk) twice. P2. K16. Rep from \* twice more. (P2. yo. ssk) twice. P2. K8.

**7th row:** K8. \*(P2. K2tog. yo) twice. P2. K16. Rep from \* twice more. (P2. K2tog. yo) twice. P2. K8.

**8th row:** As 2nd row.

Rep last 8 rows for pat until Shawl measures 54½ in [138.5 cm], ending on a 5th row.

**Next row:** (WS). Knit, dec 17 sts evenly across. 87 sts.

Knit 3 rows. Cast off knitwise (WS).

### KEY

☐ = Knit on RS rows. Purl on WS rows.

⊙ = yo

☐ = Purl on RS rows. Knit on WS rows.

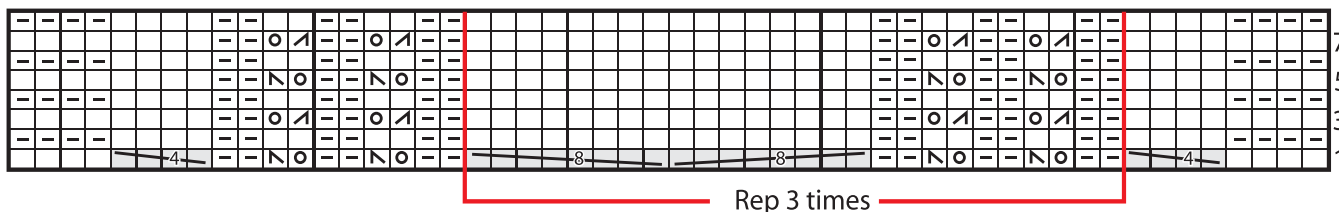
☐☐☐☐ = C4F

☐☐ = K2tog

☐☐☐☐☐☐☐☐ = C8F

☐ = ssk

☐☐☐☐☐☐☐☐ = C8B



### STITCH GLOSSARY

**Approx** = Approximately.

**Beg** = Beginning.

**C4F** = Slip next 2 sts onto a cable needle and leave at front of work. K2, then K2 from cable needle.

**C8B** = Slip next 4 sts onto a cable needle and leave at back of work. K4, then K4 from cable needle.

**C8F** = Slip next 4 sts onto a cable needle and leave at front of work. K4, then K4 from cable needle.

**Dec** = Decrease(ing).

**Inc** = Increase(ing).

**K** = Knit.

**K2tog** = Knit next 2 stitches together.

**P** = Purl.

Pat = Pattern

**Rep** = Repeat.

**RS** = Right side.

**Ssk** = Slip next 2 stitches knitwise one at a time. Pass them back onto left-hand needle, then knit through back loops together.

**Sts** = Stitch(es).

**Tog** = Together.

**WS** = Wrong side.

**Yo** = Yarn over.



**Patons®**  
Lace Sequin

... a part of your life.  
P.O. Box 40, Listowel ON N4W 3H3