

## BERNAT® LEAF AND LACE SET | KNIT



### MATERIALS

**Bernat® Softee Baby™** (5 oz/140 g; 362 yds/331 m)

<b>Jacket</b>	<b>0/3</b>	<b>6/12</b>	<b>mos</b>
Soft Fern (30221)	<b>1</b>	<b>2</b>	<b>balls</b>
<b>Hat &amp; Booties</b>			
Soft Fern (30221)	<b>1</b>	<b>1</b>	<b>ball</b>
<b>Set</b>			
Soft Fern (30221)	<b>2</b>	<b>2</b>	<b>balls</b>

Sizes U.S. 4 (3.5 mm) and U.S. 5 (3.75 mm) knitting needles **or size needed to obtain gauge**. 4 stitch holders. 12 stitch markers. Size U.S. F/5 (3.75 mm) crochet hook. 2 buttons. 1½ yds [1.4 m] of ¾" [1 cm] wide ribbon for Bonnet.

### ABBREVIATIONS:

**Beg** = Beginning  
**Inc1** = Increase 1 stitch by knitting into front and back of next stitch  
**K** = Knit  
**K2tog** = Knit next 2 stitches together  
**Kfb** = Knit into front and back of next stitch  
**P** = Purl  
**P2tog** = Purl next 2

stitches together  
**Pat** = Pattern  
**PM** = Place marker  
**Pssso** = Pass slipped stitch over  
**Rem** = Remaining  
**Rep** = Repeat  
**RS** = Right side  
**Sc** = Single crochet  
**S11** = Slip next stitch knitwise

**Ssk** = Slip next 2 stitches knitwise one at a time. Pass them back onto left-hand needle, then knit through back loops together  
**St(s)** = Stitch(es)  
**Tog** = Together  
**WS** = Wrong side  
**Yo** = Yarn over

 KNIT | SKILL LEVEL: INTERMEDIATE

### SIZES

To fit baby **0/3** (6/12) mos.

### GAUGE

24 sts and 32 rows = 4" [10 cm] with larger needles in stocking st.

### INSTRUCTIONS

*The instructions are written for smaller size. If changes are necessary for larger size the instructions will be written thus (.). Numbers for each size are shown in the same color throughout the pattern. When only one number is given in black, it applies to both sizes.*

### LACE PAT

**1st row:** K1. \*P1. yo. ssk. Rep from \* to last 2 sts. P1. K1.

**2nd row:** K2. \*P2. K1. Rep from \* to last st. K1.

**3rd row:** K1. P1. \*K2tog. yo. P1. Rep from \* to last st. K1.

**4th row:** As 2nd row.

These 4 rows form Lace Pat.

### JACKET

**Note:** Jacket is worked in one piece from neck edge down.

Beg at neck, with smaller needles, cast on 70 sts.

Knit 5 rows (garter st), noting first row is WS.

Proceed as follows:

**1st row:** (RS). K5. P1. K3. \*Kfb. K4. Rep from \* to last 6 sts. P1. K1. Cast off 2 sts (buttonhole). K2. 81 sts.

**2nd row:** K2. Cast on 2 sts. K2. \*P9. K1. Rep from \* to last 5 sts. K5.

Proceed in Leaf pat as follows:

**1st row:** K5. \*P1. K4. yo. K1. yo. K4. Rep from \* to last 6 sts. P1. K5. 95 sts.

**2nd row:** K6. \*P11. K1. Rep from \* to last 5 sts. K5.

**3rd row:** K5. \*P1. K5. yo. K1. yo. K5. Rep from \* to last 6 sts. P1. K5. 109 sts.

**4th row:** K6. \*P13. K1. Rep from \* to last 5 sts. K5.

**5th row:** K5. \*P1. Pm on last st. K6. yo. K1. yo. K6. Rep from \* to last 6 sts. P1. Pm on last st. K5. 123 sts.

**6th row:** K5. K1 (marked st). \*Purl to next marked st. K1 (marked st). Rep from \* to last 5 sts. K5.

**Size 6/12 mos only: 7th row:** K5. \*P1 (marked st). PM on last st. K7. yo. K1. yo. K7. Rep from \* to last 6 sts. P1 (marked st). K5. 137 sts.

**8th row:** K5. K1 (marked st). \*Purl to next marked st. K1 (marked st). Rep from \* to last 5 sts. K5.

**Both Sizes:** Refer to Chart I (II), noting **16-st (18-st)** rep will be worked 6 times across row. (Charts are shown on page 4).

Lower half of 7 leaves are beg to form and are separated by garter st.

**1st row:** K5. P1 (marked st). yo. ssk. Knit to 2 sts before next marked st. K2tog. yo. \*K1 (marked st). yo. ssk. Knit to 2 sts before next marked st. K2tog. yo. Rep from \* to last 6 sts. P1 (marked st). K5.

**2nd row:** K6. \*K1. Purl to 1 st before next marked st. K1. Knit marked st. Rep from \* to last 5 sts. K5.

**3rd row:** K5. P1 (marked st). K1. yo. ssk. Knit to 3 sts before next marked st. K2tog. yo. K1. \*Knit marked st. K1. yo. ssk. Knit to 3 sts before next marked st. K2tog. yo. K1. Rep from \* to last 6 sts. P1. K5.

**4th row:** K6. \*K2. Purl to 2 sts before next marked st. K2. Knit marked st. Rep from \* to last 5 sts. K5.

**5th row:** K5. P1 (marked st). K2. yo. ssk. Knit to 4 sts before next marked st. K2tog. yo. K2. \*Knit marked st. K2. yo. ssk. Knit to

4 sts before next marked st. K2tog. yo. K2. Rep from \* to last 6 sts. P1 (marked st). K5.

**6th row:** K6. \*K3. Purl to 3 sts before next marked st. K3. Knit marked st. Rep from \* to last 5 sts. K5.

**7th row:** K5. P1 (marked st). K3. yo. ssk. Knit to 5 sts before next marked st. K2tog. yo. K3. \*Knit marked st. K3. yo. ssk. Knit to

5 sts before next marked st. K2tog. yo. K3. Rep from \* to last 6 sts. P1 (marked st). K5.

**8th row:** K6. \*K4. Purl to 4 sts before next marked st. K4. Knit marked st. Rep from \* to last 5 sts. K5.

**9th row:** K5. P1 (marked st). K4. yo. ssk. Knit to 6 sts before next marked st. K2tog. yo. K4. \*Knit marked st. K4. yo. ssk. Knit to

6 sts before next marked st. K2tog. yo. K4. Rep from \* to last 6 sts. P1 (marked st). K5.

**10th row:** K6. \*K5. Purl to 5 sts before next marked st. K5. Knit marked st. Rep from \* to last 5 sts. K5.

**11th row:** K5. P1 (marked st). K5. yo. ssk. Knit to 7 sts before next marked st. K2tog. yo. K5. \*Knit marked st. K5. yo. ssk. Knit to

7 sts before next marked st. K2tog. yo. K5. Rep from \* to last 6 sts. P1 (marked st). K5.

**12th row:** K6. \*K6. Purl to 6 sts before next marked st. K6. Knit marked st. Rep from \* to last 5 sts. K5.

**Size 6/12 mos only: 13th row:** K5. P1 (marked st). K6. yo. ssk. Knit to 8 sts before next marked st. K2tog. yo. K6. \*Knit

marked st. K6. yo. ssk. Knit to 8 sts before next marked st. K2tog. yo. K6. Rep from \* to last 6 sts. P1 (marked st). K5.

**14th row:** K5. Knit marked st. \*K7. Purl to 7 sts before next marked st. K7. Knit marked st. Rep from \* to last 5 sts. K5.

**Both sizes: Next row:** (RS). K5. P1 (marked st). \*K6 (7). yo. Sl1. K2tog. pssso. yo. K6 (7). Knit marked st. Rep from \* to last 5 sts. K5. Remove markers.

**Next row:** K13 (14). P1. \* K15 (17). P1. Rep from \* to last 13 (14) sts. K13 (14).

**Next row:** K5. P1. Knit to last 6 sts. P1. K5.

**Next row:** (Inc row). K5. P1. K1. \*Inc1. Rep from \* to last 8 (9) sts. K2 (3). P1. K1. Cast off 2 sts. K2. 231 (258) sts.

**Next row:** K2. Cast on 2 sts. Knit to end of row.

Change to larger needles and work **10 (14)** rows in Lace Pat, ending with WS row.

With RS facing, slip first **33 (40)** sts for Left Front onto a st holder. Slip next **48 (51)** sts for Left Sleeve onto a spare needle and place markers on sts at each end of needle. Slip next **69 (76)** sts for Back onto a st holder. Slip next **48 (51)** sts for Right Sleeve onto a st holder and place markers on sts at each end of st holder.

Slip rem **33 (40)** sts for Right Front onto st holder.

### Sleeves

With larger needles and RS facing, join yarn to **48 (51)** sts of Left Sleeve on spare needle.

Work in Lace Pat until Sleeve measures **4 (5)" [10 (12.5) cm]** from marked row, ending with a WS row.

Change to smaller needles and proceed as follows:

**1st row:** (RS). K2tog. \*P2tog. K1. Rep from \* to last 4 sts. P2tog. K2tog. **31 (33)** sts.

**2nd row:** \*P1. K1. Rep from \* to last st. P1.

**3rd row:** \*K1. P1. Rep from \* to last st. K1. Rep last 2 rows 3 times more, then 2nd row once.

Cast off loosely in rib.

Work Right Sleeve as given for Left Sleeve.

### Body

Slip rem **33 (40)** sts for Left Front, **69 (76)** sts for Back and **33 (40)** sts for Right Front onto larger needle. **135 (156)** sts.

With RS facing, join yarn to Left Front. With larger needles, proceed in Lace Pat until work from marked row measures **5½ (6½)" [14 (16.5) cm]**, ending with a WS row. Cast off.

### FINISHING

Sew sleeve seams.

With RS facing and crochet hook, work 1 row sc around entire Jacket, easing neck edge in slightly if necessary.

Sew buttons to correspond to buttonholes.

### BONNET

With larger needles, cast on 27 sts.

**1st row:** K1. \*P1. K2. yo. K1. yo. K2. Rep from \* to last 2 sts. P1. K1. 35 sts.

**2nd row:** K2. \*P7. K1. Rep from \* to last st. K1.

**3rd row:** K1. \*P1. K3. yo. K1. yo. K3. Rep from \* to last 2 sts. P1. K1. 43 sts.

**4th row:** K2. \*P9. K1. Rep from \* to last st. K1.

Proceed in Leaf Pat as follows:

**1st row:** K1. \*P1. K4. yo. K1. yo. K4. Rep from \* to last 2 sts. P1. K1. 51 sts.

**2nd row:** K2. \*P11. K1. Rep from \* to last st. K1.

**3rd row:** K1. \*P1. K5. yo. K1. yo. K5. Rep from \* to last 2 sts. P1. K1. 59 sts.

**4th row:** K2. \*P13. K1. Rep from \* to last st. K1.

**5th row:** K1. \*P1. Pm on last st. K6. yo. K1. yo. K6. Rep from \* to last 2 sts. P1. Pm on last st. K1. 67 sts.

**6th row:** K1. K1 (marked st). \*Purl to next marked st. K1 (marked st). Rep from \* to last st. K1.

**Size 6/12 mos only: 7th row:** K1. \*P1 (marked st). K7. yo. K1. yo. K7. Rep from \* to last 2 sts. P1 (marked st). K1. 75 sts.

**8th row:** K1. K1 (marked st). \*Purl to next marked st. K1 (marked st). Rep from \* to last st. K1.

**Both Sizes:** Refer to Chart I (II), noting **16-st (18-st)** rep will be worked 3 times across row.

Lower half of 4 leaves are beg to form and are separated by garter st.

**1st row:** K1. P1 (marked st). yo. ssk. Knit to 2 sts before next marked st. K2tog. yo. \*K1 (marked st). yo. ssk. Knit to 2 sts before next marked st. K2tog. yo. Rep from \* to last 2 sts. P1 (marked st). K1.

**2nd row:** K2. \*K1. Purl to 1 st before next marked st. K1. Knit marked st. Rep from \* to last st. K1.

**3rd row:** K1. P1 (marked st). K1. yo. ssk. Knit to 3 sts before next marked st. K2tog. yo. K1. \*Knit marked st. K1. yo. ssk. Knit to 3 sts before next marked st. K2tog. yo. K1. Rep from \* to last 2 sts. P1 (marked st). K1.

**4th row:** K2. \*K2. Purl to 2 sts before next marked st. K2. Knit marked st. Rep from \* to last st. K1.

**5th row:** K1. P1 (marked st). K2. yo. ssk. Knit to 4 sts before next marked st. K2tog. yo. K2. \*Knit marked st. K2. yo. ssk. Knit to 4 sts before next marked st. K2tog. yo. K2. Rep from \* to last 2 sts. P1 (marked st). K1.

**6th row:** K2. \*K3. Purl to 3 sts before next marked st. K3. Knit marked st. Rep from \* to last st. K1.

**7th row:** K1. P1 (marked st). K3. yo. ssk. Knit to 5 sts before next marked st. K2tog. yo. K3. \*Knit marked st. K3. yo. ssk. Knit to 5 sts before next marked st. K2tog. yo. K3. Rep from \* to last 2 sts. P1 (marked st). K1.

**8th row:** K2. \*K4. Purl to 4 sts before next marked st. K4. Knit marked st. Rep from \* to last st. K1.

**9th row:** K1. P1 (marked st). K4. yo. ssk. Knit to 6 sts before next marked st. K2tog. yo. K4. \*Knit marked st. K4. yo. ssk. Knit to 6 sts before next marked st. K2tog. yo. K4. Rep from \* to last 2 sts. P1 (marked st). K1.

**10th row:** K2. \*K5. Purl to 5 sts before next marked st. K5. Knit marked st. Rep from \* to last st. K1.

**11th row:** K1. P1 (marked st). K5. yo. ssk. Knit to 7 sts before next marked st. K2tog. yo. K5. \*Knit marked st. K5. yo. ssk. Knit to 7 sts before next marked st. K2tog. yo. K5. Rep from \* to last 2 sts. P1 (marked st). K1.

**12th row:** K2. (Work 12th row of chart) 3 times. K1.

**Size 6/12 mos only: 13th row:** K1. P1 (marked st). K6. yo. ssk. Knit to 8 sts before next marked st. K2tog. yo. K6. \*Knit marked st. K6. yo. ssk. Knit to 8 sts before next marked st. K2tog. yo. K6. Rep from \* to last 2 sts. P1 (marked st). K1.

**14th row:** K1. Knit marked st. \*K7. Purl to 7 sts before next marked st. K7. Knit marked st. Rep from \* to last st. K1.

**Both sizes: Next row:** (RS). K1. P1 (marked st). \*K6 (7). yo. Sl1. K2tog. pssso. yo. K6 (7). Knit marked st. Rep from \* to last st. K1. Remove markers.

**Next row:** K9 (10). P1. \*K15 (17). P1. Rep from \* to last 10 (11) sts. K10 (11).

Cont even in garter st until work from beg measures 4 (5)" [10 (12.5) cm], ending with WS row.

Proceed as follows:

**Next row:** K2. \*K2tog. K3. Rep from \* to last 5 (3) sts. K2tog. K3 (1). 54 (60) sts.

**Next row (eyelet row):** K2. \*yo. K2tog. K1. Rep from \* to last st. K1.

Knit 7 rows (garter st). Cast off.

Draw yarn through cast on edge and gather into circle. Sew back seam from top of crown for 3" [7.5 cm].

Thread ribbon through eyelets at face edge. Tie 8" [20.5 cm] lengths of ribbon into bows and sew to Bonnet as shown in picture.

### BOOTIES

With smaller needles, cast on 24 (30) sts. Work 2½ (3½)" [6 (9) cm] even in Lace Pat, ending with a WS row.

## BERNAT® LEAF AND LACE SET | KNIT

**Shape foot: 1st row: K16 (20). Turn. K8 (10). Turn.**

Work 15 (17) rows garter st across center 8 (10) sts.

**Next row:** Pick up and knit 8 (10) sts along side of toe flap. Knit rem 8 (10) sts.

**Next row:** K24 (30). Pick up and knit 8 (10) sts along other side of toe flap. Knit rem 8 (10) sts. 40 (50) sts.

Work 10 (12) rows even in garter st.

**Next row:** K1. K2tog. Knit to center 4 (6) sts. (K2tog) 2 (3) times. Knit to last 3 sts. K2tog. K1.

**Next row:** Knit.

Rep last 2 rows twice more. Cast off loosely. Sew back and sole seam.

**Twisted Cord (make 2):** Cut 3 strands of yarn 28" [71 cm] long. With both strands tog, hold one end and with someone holding the other end, twist strands to the right until they begin to curl. Fold the 2 ends tog and tie in a knot so they will not unravel. The strands will now twist themselves tog. Adjust length if desired. Thread through eyelet row at ankle.

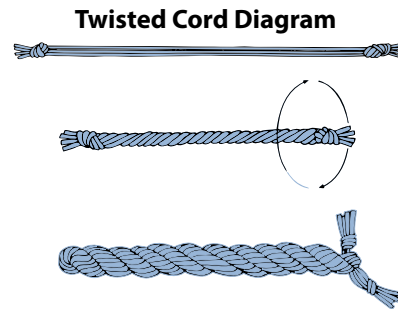


Chart II (Size 6/12 mos)

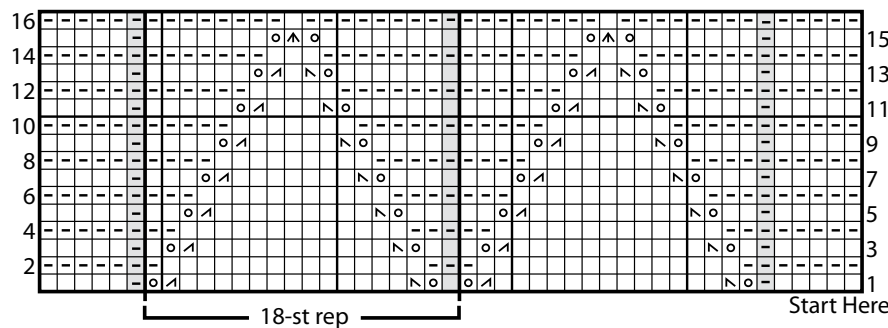
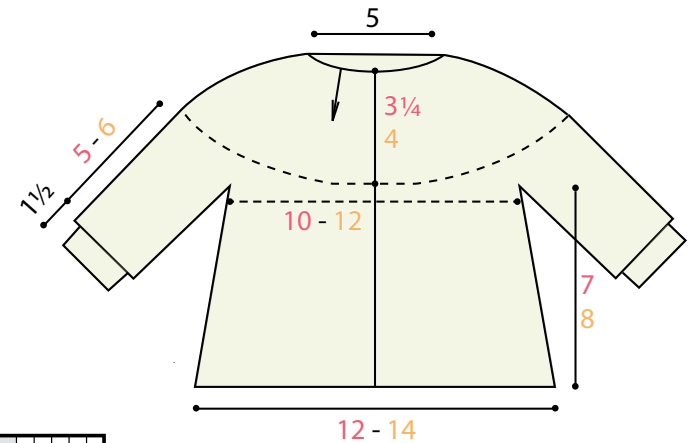
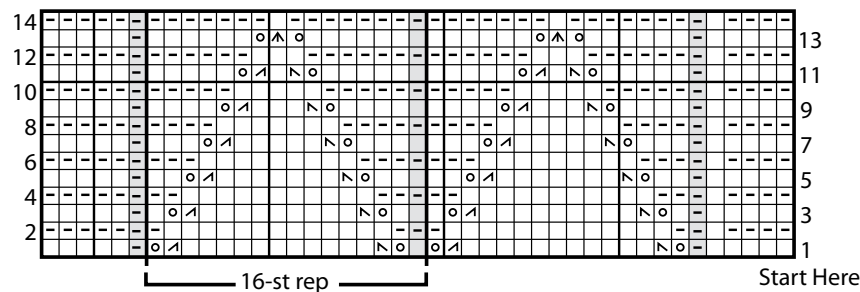


Chart I (Size 0/3 mos)



### Key

☐ = Knit on RS rows. Purl on WS rows.

☐ = Purl on RS rows. Knit on WS rows.

☐ or ☐ = Marked stitch

☐ = S11. K2tog. pssso

☐ = ssk

☐ = K2tog

☐ = yo