



Patons®
Canadiana

Patons
DECOR

BUTTERFLY BLANKET

MEASUREMENTS

Approx 47 x 55 ins [119.5 x 139.5 cm]

MATERIALS

Patons Canadiana (100 g/3.5 oz)
or **Patons Décor** (100 g/3.5 oz)

Main Color (MC) (White)	8	balls
Contrast A (Mauve)	2	balls
Contrast B (Med Blue)	2	balls
Contrast C (Dk Blue)	3	balls
Contrast D (Aqua)	2	balls
Contrast E (Fuchsia)	1	ball
Contrast F (Yellow)	1	ball
Contrast G (Lt Blue)	1	ball

Size 4.5 mm (U.S. 7) circular knitting needle and pair of size 4.5 mm (U.S. 7) knitting needles **or size needed to obtain tension.**

TENSION

20 sts and 26 rows = 4 ins [10 cm] in stocking st.

INSTRUCTIONS

Note: When working in Color Block technique, wind small balls of the colors to be used, one for each separate area of color in the design. Start new colors at appropriate points. To change colors, twist the two colors around each other where they meet, on WS, to avoid a hole. When working in Fair Isle technique, carry yarn not in use loosely across WS of work, but never over more than 5 sts. When it must pass over more than 5 sts, weave it over and under color in use on next st or at center of sts it passes over.

With circular needle and C, cast on 161 sts. **Do not** join. Working back and forth across needle, proceed as follows: Work 3 rows garter st (knit every row), noting 1st row is WS.

Next row: With MC, knit, inc 8 sts evenly across. 169 sts.

Work a further 19 rows in stocking st.

Proceed as follows:

1st row: (RS). With MC, K11. Work 1st row of Chart I, reading row from right to left. With MC, K73. Work 1st row of Chart II, reading row from **right** to left. With MC, K11.

2nd row: With MC, P11. Work 2nd row of Chart II, reading row from left to right. With MC, P73. Work 2nd row of Chart I, reading row from **left** to right. With MC, P11.

Charts I and II are now in position. Cont working Chart I and Chart II to end of charts.

Next row: (RS). With MC, K10. Work 1st row of Chart III for right side, reading row from **right** to left. Work 1st row of Chart III for left side, reading row from **left** to right, noting center st is worked only once. With MC, K10.

Next row: With MC, P10. Work 2nd row of Chart III for left side, reading row from **right** to left. Work 2nd row of Chart III for right side, reading row from **left** to right. With MC, P10.

Chart III is now in position. Cont working Chart III to end of chart.



ABBREVIATIONS: www.patonsyarns.com/glossary

With MC, beg with a purl row, cont in stocking st for 21 rows.

Next row: (RS). With C, knit, dec 8 sts evenly across. 161 sts.

With C, work 2 rows in garter st. Cast off knitwise (WS).

Garter St Side Edging: With RS of work facing, circular needle and C, pick up and knit 192 sts along side of Blanket. Work 2 rows garter st. Cast off knitwise (WS).

Rep for other side.

Side Borders (make 2)

With MC, cast on 31 sts.

Work 10 rows in stocking st.

****Next row:** (RS). With MC, K4. Work 1st row of Chart IV, reading row from **right** to left. With MC, K4.

Next row: With MC, P4. Work 2nd row of Chart IV, reading row from **left** to right. With MC, P4.

Chart IV is now in position.

Work Chart IV to end of chart.

With MC, beg with a knit row, work 30 rows in stocking st.

Next row: (RS). With MC, K5. Work 1st row of Chart V, reading row from **right** to left. With MC, K4.

Next row: With MC, P4. Work 2nd row of Chart V, reading row from **left** to right. With MC, P5.

Chart V is now in position.

Work Chart V to end of chart.

With MC, beg with a knit row, work 30 rows in stocking st.**

Rep from ** to ** once more.

Next row: (RS). With MC, K4. Work 1st row of Chart IV. With MC, K4.

Next row: With MC, P4. Work 2nd row of Chart IV. With MC, P4.

Chart IV is now in position.

Work Chart IV to end of chart.

With MC, beg with a knit row, work 10 rows in stocking st. Cast off.

Top and Bottom Border (make 2)

With MC, cast on 31 sts.

Work 20 rows in stocking st.

****Next row:** (RS). With MC, K5. Work 1st row of Chart V. With MC, K4.

Next row: With MC, P4. Work 2nd row of Chart V. With MC, P5.

Chart V is now in position.

Work Chart V to end of chart.

With MC, beg with a knit row, work 30 rows in stocking st.

Next row: (RS). With MC, K4. Work 1st row of Chart IV. With MC, K4.

Next row: With MC, P4. Work 2nd row of Chart IV. With MC, P4.

Chart IV is now in position.

Work Chart IV to end of chart.

With MC, beg with a knit row, work 30 rows in stocking st.**

Rep from ** to ** once more.

Next row: (RS). With MC, K5. Work 1st row of Chart V. With MC, K4.

Next row: With MC, P4. Work 2nd row of Chart V. With MC, P5.

Chart V is now in position.

Work Chart V to end of chart.

With MC, beg with a knit row, work 20 rows in stocking st. Cast off.

Outer Top and Bottom Edging: With RS of work facing, circular needle and C, pick up and knit 223 sts across top of Blanket. Work 4 rows garter st. Cast off knitwise (WS).

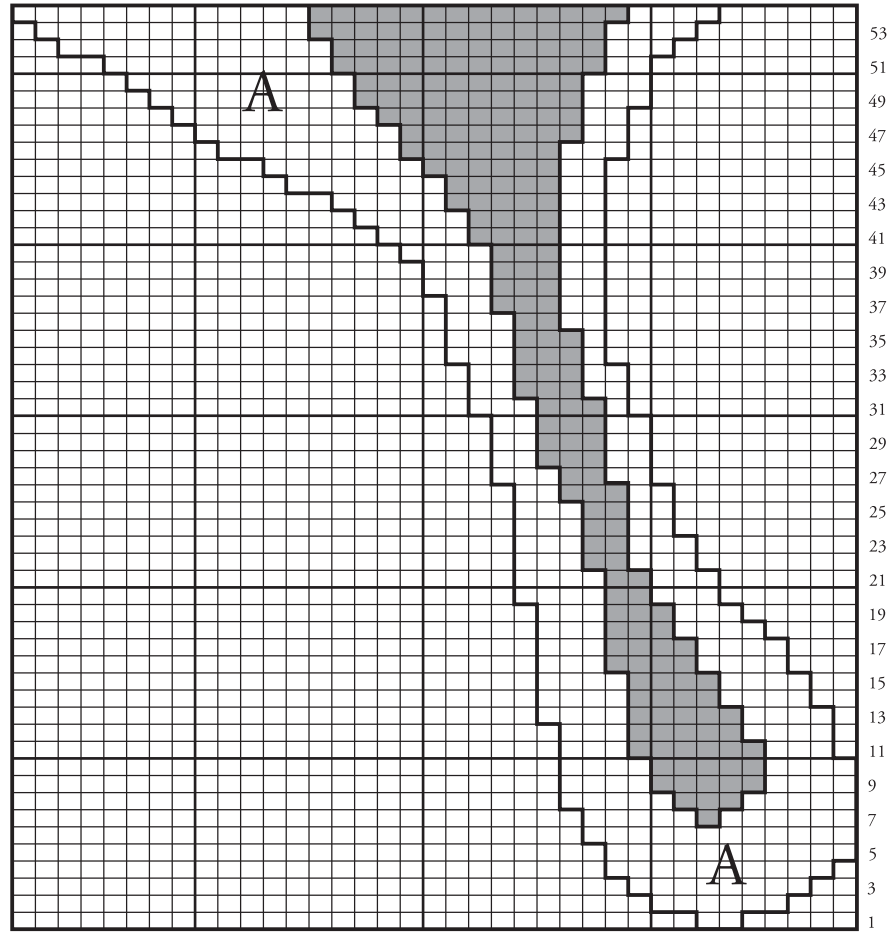
Rep for bottom.

Outer Side Edging: With RS of work facing, circular needle and C, pick up and knit 254 sts along side of Throw. Work 4 rows garter st. Cast off knitwise (WS).

Rep for other side.

With A, embroider antennae using outline st as illustrated.

CHART I

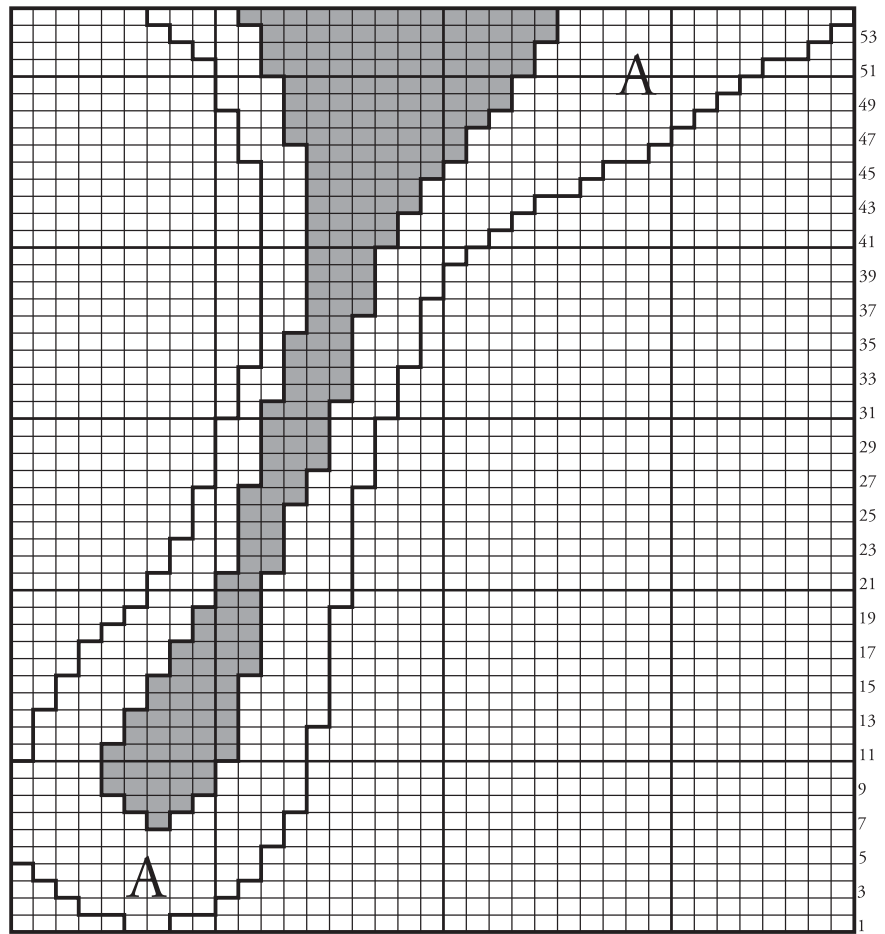


Start Here

Key

- = MC (White)
- A = Contrast A (Mauve)
- = Contrast C (Blue)

CHART II



Key

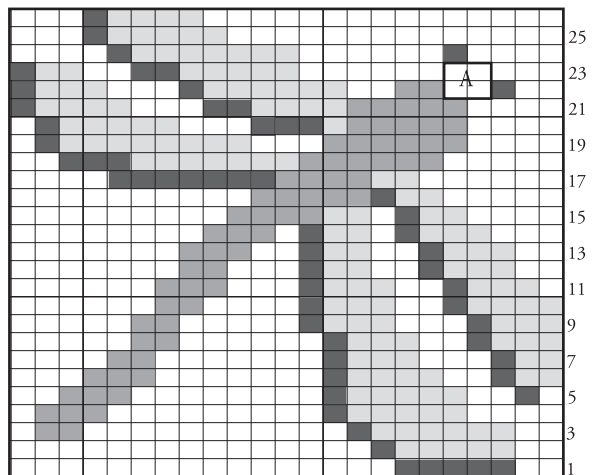
□ = MC (White)

Ⓐ = Contrast A (Maive)

■ = Contrast C (Blue)

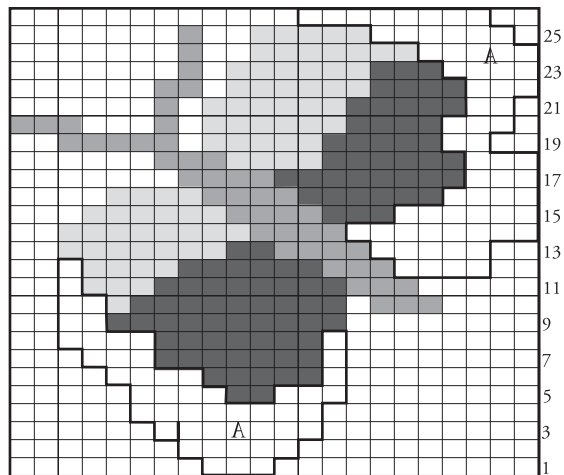
Start Here

CHART IV



Start Here

CHART V



Start Here

Key










-  = MC (White)
-  = Contrast A (Maive)
-  = Contrast B (Med. Blue)
-  = Contrast C (Blue)
-  = Contrast D (Aqua)
-  = Contrast E (Fuchsia)
-  = Contrast F (Yellow)
-  = Contrast G (Lt. blue)
-  = Stem stitch with A

CHART III

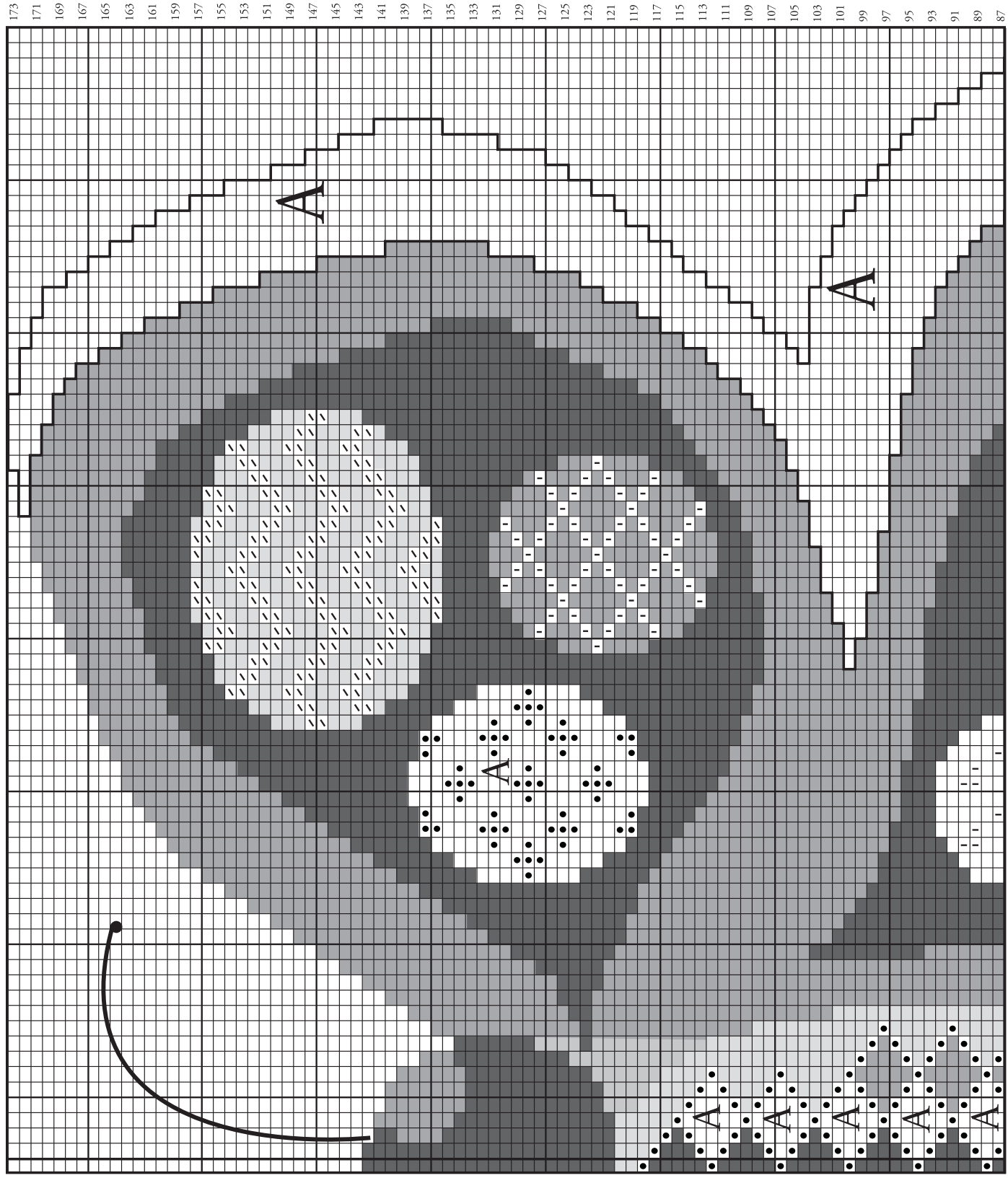
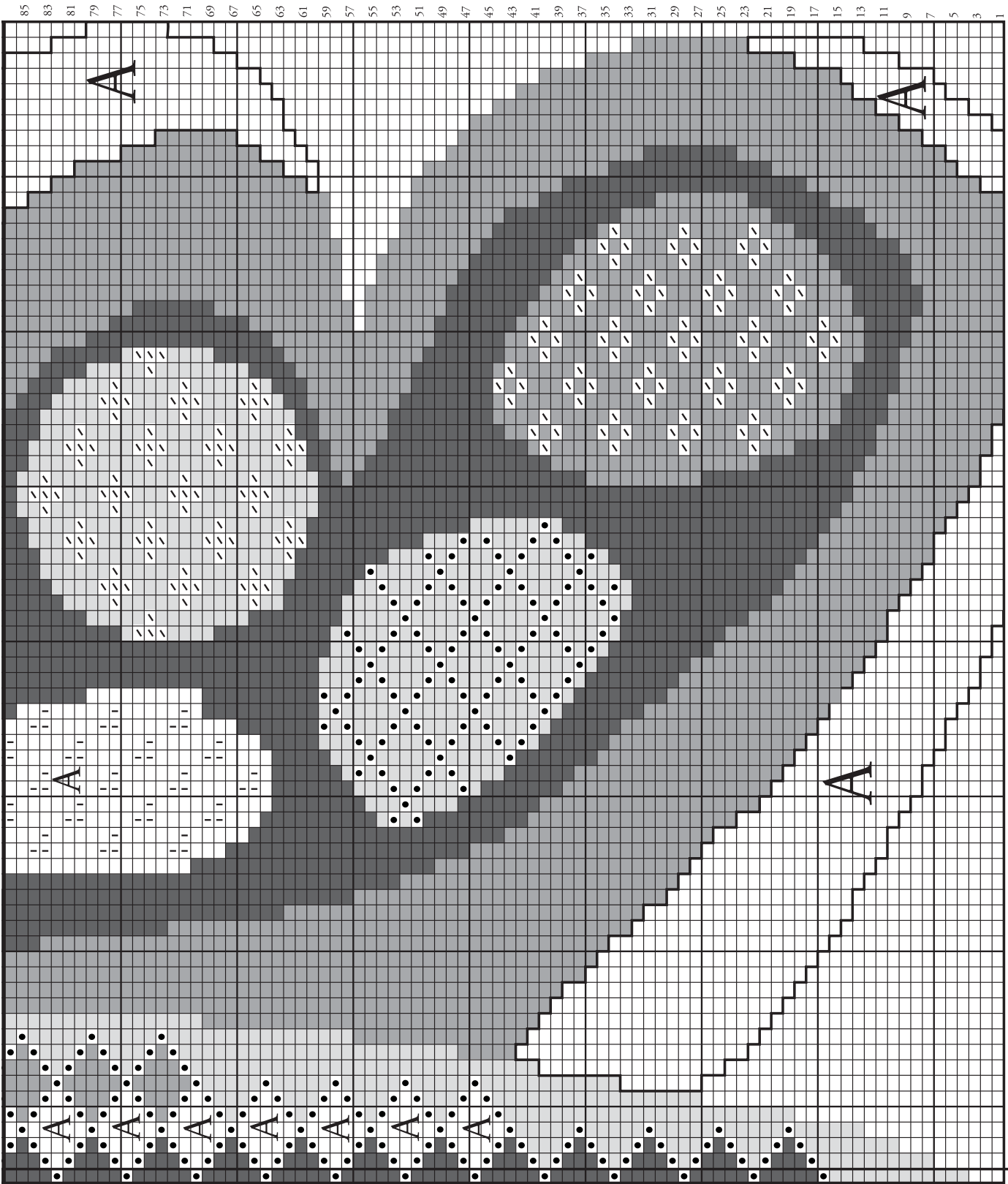


Chart III begins on next page



Right Side
Start Here

Left Side
Start Here

 Patons

... a part of your life.

P.O. Box 40, Listowel ON N4W 3H3