



KNIT  
SKILL LEVEL  
INTERMEDIATE

Designed by Diane Moyer



## What you will need:

**Poncho:** RED HEART® With Love®: 2 (2, 2) skeins 1914 Berry Red **A**, 1 (1, 1) skein 1401 Pewter **B**.

**Arm Warmers:** RED HEART® With Love®: 1 (1, 1, 1) skein 1914 Berry Red **A**, 1 (1, 1, 1) skein 1401 Pewter **B**.

**Susan Bates® Knitting Needles:**  
**Poncho:** 5.5mm [US 9] 32" (80 cm) or longer circular needle, 5mm [US 8] 24" (60 cm) or longer circular needle (for ribbing only)  
**Arm Warmers:** 4.5mm [US 7] 40" (100 cm) or longer circular needle OR two circular needles OR set of double pointed needles.

Yarn needle, stitch marker.

**GAUGE:** 16 sts = 4" (10cm); 20 rows = 4" (10cm) in Stockinette st (k on right side, p on wrong side) using largest needle (for poncho). 18 sts = 4" (10 cm); 24 rows = 4" (10 cm) in Stockinette st using smallest needle (for arm warmers). **CHECK YOUR GAUGE. Use any size needles to obtain the gauge.**



**RED HEART® With Love®**, Art. E400 available in solid color 7oz (198 g), 370 yd (338 m) and multicolor 5oz (141 g), 230 yd (211 m) skeins

SHOP KIT

# Fair Isle Poncho & Arm Warmers

*The Fair Isle knitting technique may have been originated in the Scottish isles, but it is enjoying fashion news here in the States. This matching poncho and arm warmers can be worn together or separately and is a great way to add pattern to your knitting.*

## Note

To make both a Poncho and a set of arm warmers you will need a total of 2 skeins of **A** for all sizes, and 1 (2, 2, 2) skeins of **B** (dependent on the size arm warmers you wish to make).

**Poncho directions are for size Small/Medium. Changes for sizes Large/X-Large, and XX-Large/XXX-Large are in parentheses.**

**Arm warmer directions are for size Small. Changes for sizes Medium, Large, and X-Large are in parentheses.**

## Poncho:

**Finished Neck Circumference:** 27 (28, 29)" (68.5 (71, 73.5) cm)

**Finished Lower Edge Circumference:** 48 (52½, 55½)" (122 (133.5, 141) cm)

**Finished Length:** 14 (15, 16)" (35.5 (38, 40.5) cm)

## Arm Warmers:

**Finished Wrist Circumference:** 6 (7, 8, 9)" (15 (18, 20.5, 23) cm)

## Finished Upper Arm Circumference:

9 (10, 10½, 11½)" (23 (25.5, 26.5, 29) cm)

**Finished Length:** 14½ (15½, 16½, 18)" (37 (39.5, 42, 45.5) cm)

## Special Stitches

**M1** = Make 1 (Increase) – Lift strand between needles to left-hand needle and knit strand through the back loop, twisting it to prevent a hole.

**ssk** = Slip next 2 stitches, one at a time as if to knit, to right-hand needle, insert point of left-hand needle through front of sts, knit these sts together through back loop.

## Special Technique

**I-cord Bind Off:** With right side facing, cast on 3 sts to the left-hand needle, \*k2, k2tog through the back loops, slip these 3 stitches back to the left-hand needle as if to purl; repeat from \* until only 3 stitches remain. Bind off the remaining 3 stitches in the normal way.

## Pattern Stitch

### 2x2 Rib (multiple of 4 sts)

**Round 1:** \*K2, p2; repeat from \* to end of round.

Repeat Round 1 for 2x2 Rib.

## Notes

1. Poncho is worked in rounds beginning at neck.
2. The body of Poncho is worked in Stockinette stitch (knit every round). The yarn color is changed to work three different Fair Isle patterns. Join the 2nd color in first round of each Fair Isle pattern, leaving a long beginning tail to weave in later.
3. Arm Warmers are worked in rounds beginning at the upper arm. A single circular needle and the magic loop technique was used to make the arm warmers in the photograph(s). If desired, a set of double pointed needles or two circular needles can be used instead.

Continued...



2015  
WOMEN'S CHOICE AWARD®  
AMERICA'S MOST RECOMMENDED  
YARN BRAND



- When working Fair Isle patterns, carry color not in use loosely across wrong side of piece.
- Color charts of the Fair Isle patterns are provided. Read all rows of charts from right to left.

## PONCHO

With 5mm [US 8] needle and **A**, cast on 108 (112, 116) sts. Place a marker for beginning of round. Prepare to work in rounds.

### Neck Ribbing

Work in 2x2 Rib until piece measures about 2½" (6.5 cm) from beginning.

Change to 5.5mm [US 9] needle.

**Round 1 (increase):** [K5 (4, 3), M1] 12 (14, 28) times, [K6 (4, 4), M1] 8 (14, 8) times—128 (140, 152) sts.

**Rounds 2-4:** Knit.

### Checkerboard Fair Isle Pattern

**Rounds 1 and 2:** \*With **A**, k2; with **B**, k2; repeat from \* to end of round.

**Rounds 3 and 4:** \*With **B**, k2; with **A**, k2; repeat from \* to end of round.

Cut **B**, leaving a long tail to weave in later.

**Next 5 Rounds:** With **A**, knit.

**Next Round (increase):** [K3 (4, 3), M1] 8 (30, 8) times, [k4 (5, 4), M1] 26 (4, 32) times—162 (174, 192) sts.

### Circles Fair Isle Pattern

**Round 1:** With **A**, k2, \*with **B**, k3; with **A**, k3; repeat from \* to last 4 sts, with **B**, k3; with **A**, k1.

**Round 2:** \*With **A**, k1; with **B**, k2; repeat from \* to end of round.

**Round 3:** \*With **A**, k1; with **B**, k1; with **A**, k3; with **B**, k1; repeat from \* to end of round.

**Round 4:** Repeat Round 2.

**Round 5:** Repeat Round 1.

Cut **B**, leaving a long tail to weave in later.

**Next 7 Rounds:** With **A**, knit.

**Next Round (increase):** [K5 (4, 6), M1] 18 (6, 18), [k6 (5, 7), M1] 12 (30, 12)—192 (210, 222) sts.

### Zigzag Fair Isle Pattern

**Round 1:** \*With **A**, k2; with **B**, k1; with **A**, k3; repeat from \* to end of round.

**Round 2:** \*With **A**, k1; with **B**, k3; with **A**, k2; repeat from \* to end of round.

**Round 3:** \*With **B**, k5; with **A**, k1; repeat from \* to end of round.

**Round 4:** \*With **A**, k1; with **B**, k1; with **A**, k1; with **B**, k3; repeat from \* to end of round.

**Round 5:** \*[With **B**, k1; with **A**, k1] twice; with **B**, k2; repeat from \* to end of round.

**Round 6:** \*With **A**, k1; with **B**, k3; with **A**, k1; with **B**, k1; repeat from \* to end of round.

**Round 7:** \*With **B**, k3; with **A**, k1; with **B**, k1; with **A**, k1; repeat from \* to end of round.

**Round 8:** \*With **B**, k2; with **A**, k1; with **B**, k3; repeat from \* to end of round.

**Round 9:** \*With **B**, k1; with **A**, k3; with **B**, k2; repeat from \* to end of round.

**Round 10:** \*With **A**, k5; with **B**, k1; repeat from \* to end of round.

Cut **B**, leaving a long tail to weave in later.

**Next Round:** With **A**, knit.

Repeat last round until piece measures about 13½ (14½, 15½)" (34.5 (37, 39.5) cm) from beginning or ½" (1.5 cm) less than desired length.

Bind off using I-cord bind off.

Cut yarn, leaving a long tail for sewing.

## ARM WARMERS (make 2)

With 4.5mm [US 7] needle(s) and **B**, cast on 40 (44, 48, 52) sts.

Place a marker for beginning of round.

Prepare to work in rounds.

### Top Ribbing

Work in 2x2 Rib until piece measures about 2½" (6.5 cm) from beginning.

**Next 8 (9, 10, 11) Rounds:** Knit.

**Next Round (decrease):** K1, ssk, k to last 3 sts, k2tog, k1—38 (42, 46, 50) sts.

Repeat the last 9 (10, 11, 12) rounds 5 more times—28 (32, 36, 40) sts.

**Next Round:** Knit.

Repeat last round until piece measures about 12 (13, 14, 15½)" (30.5 (33, 35.5, 39.5) cm) from beginning.

### Thumb Opening

**Round 1:** K4, bind off 8 sts, knit to end of round—20 (24, 28, 32) sts.

**Round 2:** K4, cast on 8 sts using backward loop method, knit to end of round—28 (32, 36, 40) sts.

**Next 4 Rounds:** Knit.

### Checkerboard Fair Isle Pattern

**Rounds 1 and 2:** \*With **A**, k2; with **B**, k2; repeat from \* to end of round.

**Rounds 3 and 4:** \*With **B**, k2; with **A**, k2; repeat from \* to end of round.

Cut **A**, leaving a long tail to weave in later.

**Next Round:** With **B**, knit.

Repeat last round until piece measures about 2" (5 cm) from cast-on round of thumb opening.

Bind off using I-cord bind off.

Cut yarn, leaving a long tail for sewing.

## FINISHING

**Poncho:** Sew I-cord ends together neatly. Weave in ends and wet block to finished measurements.

**Arm Warmers:** Sew I-cord ends together neatly. Weave in ends.

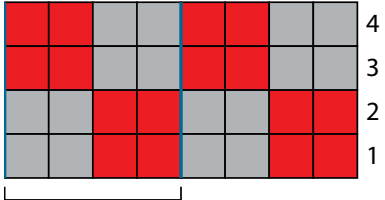
## ABBREVIATIONS

**A** and **B** = Color A and Color B; **k** = knit; **k2tog** = knit next 2 stitches together; **p** = purl; **st(s)** = stitch(es); [ ] = work directions in brackets the number of times specified; \* = repeat whatever follows the \* as indicated.

*See next page for chart and alternate photo*



Checkerboard Fair Isle Pattern

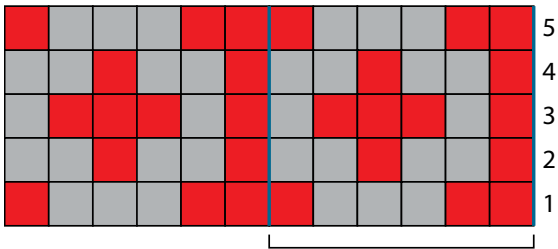


4-st repeat

Key

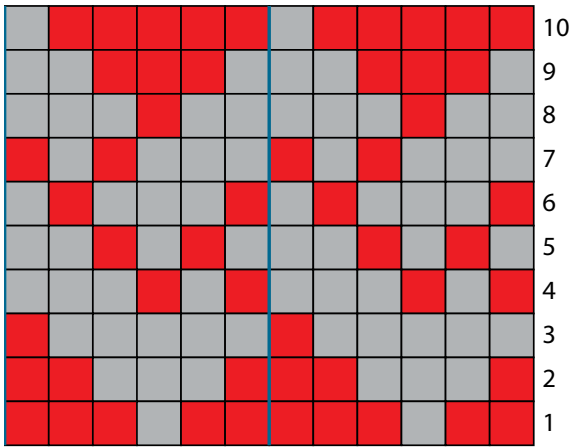
- 1914 Berry Red (A)
- 1401 Pewter (B)

Circles Fair Isle Pattern



6-st repeat

Zigzag Fair Isle Pattern



6-st repeat

