

Patons® Canadiana

Patons
DECOR



VEGGIES AND STRIPES BLANKET

SIZES

Approx 43 ins x 55 ins [109 x 139.5 cm]

TENSION

20 sts and 26 rows = 4 ins [10 cm]
in stocking st.

MATERIALS

Patons Canadiana (100 g/3.5 oz)
or Patons Décor (100 g/3.5 oz)

Main color (MC) (Teal) 3 balls
Contrast A (Red) 2 balls
Contrast B (Green) 2 balls
Contrast C (Orange) 3 balls
Contrast D (Yellow) 3 balls
Contrast E (Purple) 3 balls

Size 4.5 mm (U.S. 7) knitting needles.
Size 4.5 mm (U.S. 7) circular knitting
needle 36 ins [90 cm] long **or size
needed to obtain tension.**

ABBREVIATION

MB = [(K1. P1) 3 times. K1] all in
next st. 7 sts. Slip 6th, 5th, 4th,
3rd, 2nd and first sts separately
over 7th st. One st rem. Bobble
complete. Always push bobble to
RS of work.

INSTRUCTIONS

Note: When working from charts,
wind small balls of the colors to be
used, one for each separate area
of color in the design. Start new
colors at appropriate points. To
change colors, twist the two
colors around each other where
they meet, on WS, to avoid a hole.

BLOCK A

With E, work 4 rows stocking st.
With MC, work 2 rows stocking st.
With D, work 2 rows stocking st.
With A, work 2 rows stocking st.
With C, work 4 rows stocking st.
With E, work 2 rows stocking st.
With B, work 2 rows stocking st.
With D, work 2 rows stocking st.
With A, work 4 rows stocking st.
With MC, work 2 rows stocking st.
With C, work 2 rows stocking st.
With E, work 2 rows stocking st.
With D, work 4 rows stocking st.
These 34 rows complete Block A.

BLOCK B

With D, work 4 rows stocking st.
With MC, work 2 rows stocking st.
Rep last 6 rows 4 times more.
With D, work 4 rows stocking st.
These 34 rows complete Block B.

BLOCK C

With E, work 2 rows stocking st.
With A, work 2 rows stocking st.
Rep last 4 rows 7 times more.
With E, work 2 rows stocking st.
These 34 rows complete Block C.

STRIP ONE (make 2)

With E cast on 28 sts.

*Work Block A.

Work Chart I in stocking st to end
of chart reading **knit** rows from
right to left and **purl** rows from
left to right.

Work Block B.*



ABBREVIATIONS: www.patonsyarns.com/glossary

Work Chart II in stocking st to end of chart reading **knit** rows from **right** to left and **purl** rows from **left** to right.

Work Block C.

Work Chart III in stocking st to end of chart reading **knit** rows from **right** to left and **purl** rows from **left** to right.

Rep from * to * once more.

With D, cast off.

STRIP TWO

With C cast on 28 sts.

*Work Chart I in stocking st to end of chart reading **knit** rows from **right** to left and **purl** rows from **left** to right.

Work Block B.

Work Chart II in stocking st to end of chart reading **knit** rows from **right** to left and **purl** rows from **left** to right.*

Work Block C.

Work Chart III in stocking st to end of chart reading **knit** rows from **right** to left and **purl** rows from **left** to right.

Work Block A.

Rep from * to * once more.

With E, cast off.

STRIP THREE

With D cast on 28 sts.

*Work Block B.

Work Chart II in stocking st to end of chart reading **knit** rows from **right** to left and **purl** rows from **left** to right.

Work Block C.*

Work Chart III in stocking st to end of chart reading **knit** rows from **right** to left and **purl** rows from **left** to right.

Work Block A.

Work Chart I in stocking st to end of chart reading **knit** rows from **right** to left and **purl** rows from **left** to right.

Rep from * to * once more.

With E, cast off.

STRIP FOUR

With E cast on 28 sts.

*Work Chart II in stocking st to end of chart reading **knit** rows from **right** to left and **purl** rows from **left** to right.

Work Block C.

Work Chart III in stocking st to end of chart reading **knit** rows from **right** to left and **purl** rows from **left** to right.*

Work Block A.

Work Chart I in stocking st to end of chart reading **knit** rows from **right** to left and **purl** rows from **left** to right.

Work Block B.

Rep from * to * once more.

With D, cast off.

STRIP FIVE

With E cast on 28 sts.

*Work Block C.

Work Chart IIII in stocking st to end of chart reading **knit** rows from **right** to left and **purl** rows from **left** to right.

Work Block A.*

Work Chart I in stocking st to end of chart reading **knit** rows from **right** to left and **purl** rows from **left** to right.

Work Block B.

Work Chart II in stocking st to end of chart reading **knit** rows from **right** to left and **purl** rows from **left** to right.

Rep from * to * once more.

With D, cast off.

STRIP SIX

With D cast on 28 sts.

*Work Chart III in stocking st to end of chart reading **knit** rows from **right** to left and **purl** rows from **left** to right.

Work Block A.

Work Chart I in stocking st to end of chart reading **knit** rows from **right** to left and **purl** rows from **left** to right.*

Work Block B.

Work Chart II in stocking st to end of chart reading **knit** rows from **right** to left and **purl** rows from **left** to right.

Work Block C.

Rep from * to * once more.

With C, cast off.

Sew Strips tog in the following order: 1, 2, 3, 4, 5, 6, 1.

SIDE BORDERS

With RS facing and circular needle, pick up and knit 235 sts along each side edge.

1st row: (WS). *K1. P1. Rep from * to last st. K1.

This row forms seed st pat.

Rep last row until Border measures 2 ins [5 cm] ending with RS facing for next row. Cast off in pat.

TOP AND BOTTOM BORDERS

With RS facing and circular needle, pick up and knit 201 sts across top or bottom edge.

Proceed in seed st pat as given for Side Borders until Border measures 2 ins [5 cm] ending with RS facing for next row. Cast off in pat.

CHART I

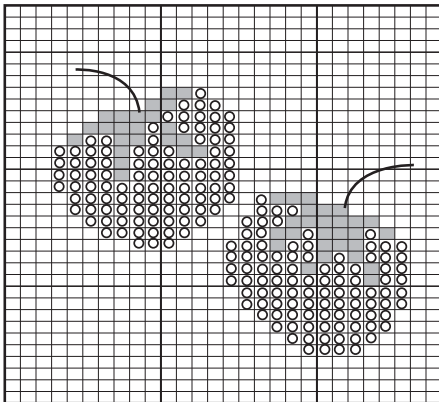


CHART II

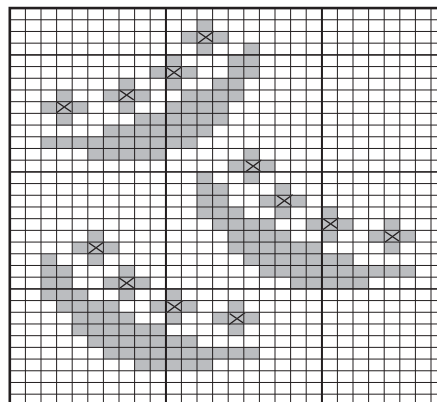
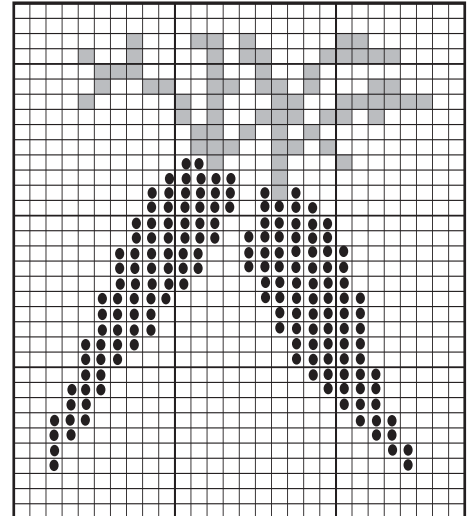


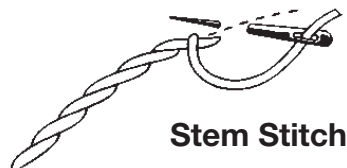
CHART III



- Key
- = Contrast C
 - = Contrast B
 - = Contrast A
 - = Contrast B, stem st

- Key
- = Contrast E
 - = Contrast B
 - = Contrast B, MB (RS or WS, push bobble to RS)

- Key
- = Contrast D
 - = Contrast B
 - = Contrast C



Stem Stitch

Patons

... a part of your life.

P.O. Box 40, Listowel ON N4W 3H3