



**PATONS® GRACE™  
CHEVRON LEAF SHAWL  
OR SCARF(TO KNIT)**

**MEASUREMENTS**

**Shawl:** Approx 54" [137 cm] wide x 24" [61 cm] deep at center back.

**Scarf:** Approx 38" [96.5 cm] wide x 14" [35.5 cm] deep at center back.

**MATERIALS**

**Patons® Grace™**  
(50 g/1.75 oz; 125 m/136 yds)

**Shawl:** 62104 (Azure) **5 balls**

**Scarf:** 62440 (Lotus) **3 balls**

Size 3.75 mm (U.S. 5) circular knitting needle 24" [61 cm] long **or size needed to obtain tension.**

**TENSION**

22 sts and 30 rows = 4" [10 cm] in stocking st.

**INSTRUCTIONS**

**SHAWL**

**\*\*Beg** at center back, cast on 2 sts. Working back and forth across needle in rows, proceed as follows:

**1st row:** (WS). Inc 1 st in first st. K1. 3 sts.

**2nd row:** (K1. yo) twice. K1. 5 sts.

**3rd row:** K1. yo. K3. yo. K1. 7 sts.

Work Chart I to end of chart as follows:

**1st row:** (RS). K2. yo. K1. yo. K1 (mark as center st). yo. K1. yo. K2. 11 sts.

**2nd and alt rows:** K2. Purl to last 2 sts. K2.

**3rd row:** K2. yo. K3. yo. K1 (center st). yo. K3. yo. K2. 15 sts.

**5th row:** K2. \*yo. K2tog. yo. K1. yo. ssk. yo.\* K1 (center st). Rep from \* to \* once. K2. 19 sts.

**7th row:** K2. \*yo. K2tog. (K1. yo) twice. K1. ssk. yo.\* K1 (center st). Rep from \* to \* once. K2. 23 sts.

**9th row:** K2. yo. K9. yo. K1 (center st). yo. K9. yo. K2. 27 sts.

**11th row:** K2. \*yo. K1. yo. K3. S11. K2tog. pssso. K3. yo. K1. yo.\* K1 (center st). Rep from \* to \* once. K2. 31 sts.

**13th row:** K2. \*yo. K2. yo. K3. S11. K2tog. pssso. K3. yo. K2. yo.\* K1 (center st). Rep from \* to \* once. K2. 35 sts.

**15th row:** K2. \*(yo. K3) twice. S11. K2tog. pssso. (K3. yo) twice.\* K1 (center st). Rep from \* to \* once. K2. 39 sts.

**17th row:** K2. \*yo. K4. yo. K3. S11. K2tog. pssso. K3. yo. K4. yo.\* K1 (center st). Rep from \* to \* once. K2. 43 sts.

**19th row:** K2. \*yo. K5. yo. K3. S11. K2tog. pssso. K3. yo. K5. yo.\* K1 (center st). Rep from \* to \* once. K2. 47 sts.

**20th row:** As 2nd row.

Work Chart II to end of chart as follows:

**1st row:** (RS). K2. yo. K1. \*ssk. K2. yo. K1. yo. K2. K2tog. K1.\* Rep from \* to \* once more. yo. K1 (center st). yo. K1. Rep from \* to \* twice more. yo. K2. 51 sts.

**STITCH GLOSSARY**

[www.patonsyarns.com/abbreviations](http://www.patonsyarns.com/abbreviations)

**Alt** = Alternate(ing).

**Approx** =

Approximately.

**Beg** = Beginning.

**Inc** = Increase 1 stitch by knitting into front and back of next stitch.

**K** = Knit.

**K2tog** = Knit next 2 stitches together.

**Pssso** = Pass slipped stitch over.

**Rep(s)** = Repeat(s).

**RS** = Right side.

**Rnd(s)** = Round(s).

**S11** = Slip next stitch knitwise.

**Ssk** = Slip next 2 stitches knitwise one at a time. Pass them back onto left-hand needle, then knit through back loops together.

**St(s)** = Stitch(es).

**WS** = Wrong side.

**Yo** = Yarn over.

**Patons®**  
*Grace™*  
...a part of your life.

P.O. Box 40, Listowel ON N4W 3H3

[www.patonsyarns.com](http://www.patonsyarns.com)



CHEVRON LEAF SHAWL OR SCARF

**2nd and alt rows:** K2. Purl to last 2 sts. K2.

**3rd row:** K2. yo. K2. \*ssk. K2. yo. K1. yo. K2. K2tog. K1.\* Rep from \* to \* once more. K1. yo. K1 (center st). yo. K2. Rep from \* to \* twice more. K1. yo. K2. 55 sts.

**5th row:** K2. yo. K3. \*ssk. K2. yo. K1. yo. K2. K2tog. K1.\* Rep from \* to \* once more. K2. yo. K1 (center st). yo. K3. Rep from \* to \* twice more. K2. yo. K2. 59 sts.

**7th row:** K2. yo. K4. \*ssk. K2. yo. K1. yo. K2. K2tog. K1.\* Rep from \* to \* once more. K3. yo. K1 (center st). yo. K4. Rep from \* to \* twice more. K3. yo. K2. 63 sts.

**9th row:** K2. yo. K5. \*ssk. K2. yo. K1. yo. K2. K2tog. K1.\* Rep from \* to \* once more. K4. yo. K1 (center st). yo. K5. Rep from \* to \* twice more. K4. yo. K2. 67 sts.

**11th row:** K2. yo. K3. K2tog. yo. K1. \*yo. ssk. K5. K2tog. yo. K1.\* Rep from \* to \* once more. yo. ssk. K3. yo. K1 (center st). yo. K3. K2tog. yo. K1. Rep from \* to \* twice more. yo. ssk. K3. yo. K2. 71 sts.

**13th row:** K2. yo. K3. K2tog. yo. K2. \*K1. yo. ssk. K3. K2tog. yo. K2.\* Rep from \* to \* once more. K1. yo. ssk. K3. yo. K1 (center st). yo.

K3. K2tog. yo. K2. Rep from \* to \* twice more. K1. yo. ssk. K3. yo. K2. 75 sts.

**15th row:** K2. yo. K3. K2tog. yo. K3. \*K2. yo. ssk. K1. K2tog. yo. K3.\* Rep from \* to \* once more. K2. yo. ssk. K3. yo. K1 (center st). yo. K3. K2tog. yo. K3. Rep from \* to \* twice more. K2. yo. ssk. K3. yo. K2. 79 sts.

**17th row:** K2. yo. K3. K2tog. yo. K4. \*K3. yo. Sl1. K2tog. pssso. yo. K4.\* Rep from \* to \* once more. K3. yo. ssk. K3. yo. K1 (center st). yo. K3. K2tog. yo. K4. Rep from \* to \* twice more. K3. yo. ssk. K3. yo. K2. 83 sts.

**19th row:** K2. yo. K39. yo. K1 (center st). yo. K39. yo. K2. 87 sts.

**20th row:** As 2nd row.\*\*  
Rep 1st to 20th rows of Chart II 6 times more (noting reps between \* to \* will increase 2 reps on each side of center st every 20 rows). 327 sts.

**Edging: 1st row:** (RS). K3. \*yo. ssk. Rep from \* to center st. yo. K1 (center st). yo. \*\*K2tog. yo. Rep from \*\* to last 3 sts. K3. 329 sts.

**2nd and alt rows:** K2. Purl to last 2 sts. K2.

**3rd row:** K3. \*K2tog. yo. Rep from \* to center 3 sts. K1. yo. K1 (center st). yo. K1. \*\*yo. ssk. Rep from \*\* to last 3 sts. K3. 331 sts.

**5th row:** As 1st row. 333 sts.

**7th row:** As 3rd row. 335 sts.  
Cast off knitwise (WS).

### SCARF

Work from \*\* to \*\* as given for Shawl.  
Rep 1st to 20th rows of Chart II 3 times more (noting reps between \* to \* will increase 2 reps on each side of center st every 20 rows). 207 sts.

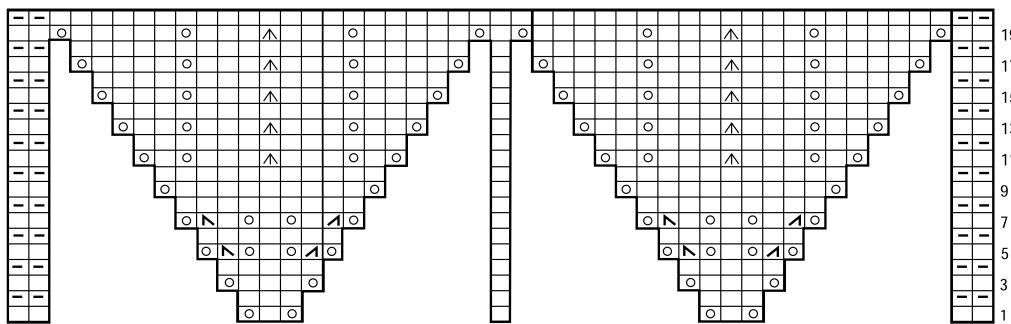
**Edging: 1st row:** (RS). K3. \*yo. ssk. Rep from \* to center st. yo. K1 (center st). yo. \*\*K2tog. yo. Rep from \*\* to last 3 sts. K3. 209 sts.

**2nd and alt rows:** K2. Purl to last 2 sts. K2.  
**3rd row:** K3. \*K2tog. yo. Rep from \* to center 3 sts. K1. yo. K1 (center st). yo. K1. \*\*yo. ssk. Rep from \*\* to last 3 sts. K3. 211 sts.

**5th row:** As 1st row. 213 sts.

**7th row:** As 3rd row. 215 sts.  
Cast off knitwise (WS).

CHART I



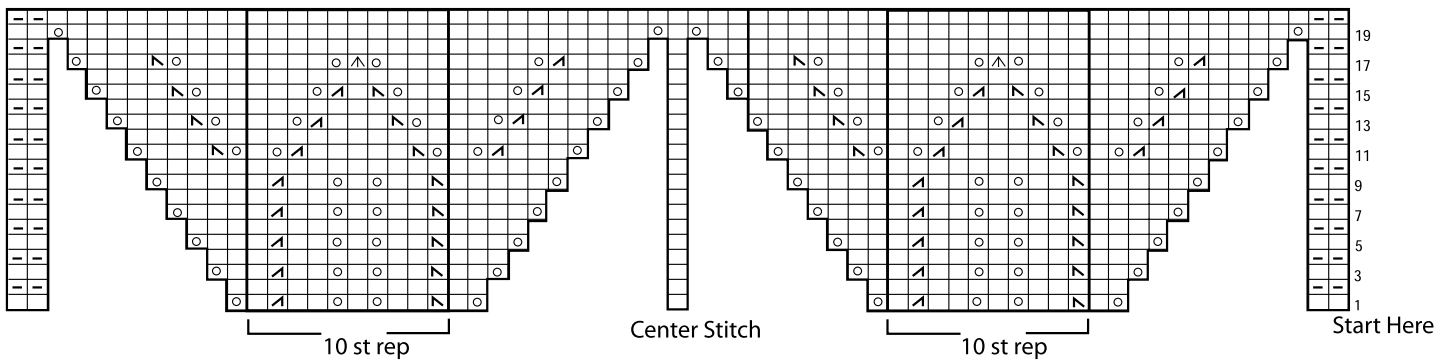
Center Stitch

Start Here

### KEY

- = Knit on RS rows. Purl on WS rows.
- = Purl on RS rows. Knit on WS rows.
- = K2tog
- = ssk
- = yo
- = Sl1. K2tog. pssso.

CHART II



10 st rep

Center Stitch

10 st rep

Start Here

**Patons**  
*Grace*  
...a part of your life.

P.O. Box 40, Listowel ON N4W 3H3

www.patonsyarns.com



CHEVRON LEAF SHAWL OR SCARF