



CROCHET
SKILL LEVEL
INTERMEDIATE

Designed by Alessandra Hayden



What you will need:

RED HEART® Soft®: 1 ball each of 9925 Really Red **A**, 4601 Off White **B**

Susan Bates® Crochet Hook: 4 mm [US G-6]

Stitch marker, yarn needle

GAUGE: 16 sts = 4" (10 cm); 14 rounds = 4" (10 cm) in single crochet worked in back loops only and carrying another strand under the stitches. **CHECK YOUR GAUGE.** Use any size hook to obtain the gauge.



RED HEART® Soft®, Art. E728 available in solid color 5 oz (141 g), 256 yd (234 m), print 4 oz (113 g), 204 yd (187 m), and heather 4oz (113g), 212 yd (194m) balls

Hearts Around Cowl

When love is in the air, it's time to do a little heart-inspired crochet! This two-color pattern is worked in the round. If you wish, change up the colors for your own unique look.

Cowl measures 30" (76 cm) circumference and 6" (15 cm) high.

Notes

1. Cowl is worked in continuous rounds (spiral) of single crochet worked in the back loops only.
2. The heart pattern is created by changing color. Two strands of yarn are used at all times. One of the strands is "carried" under the stitches crocheted with the other strand.
3. When working a solid round of **B**, carry another strand of **B** under the working strand. Roll **B** into two separate balls before beginning.
4. To change color, work last stitch of old color to last yarn over. Yarn over with new color and draw through all loops on hook to complete stitch. Do not cut old color. Work the stitches of the new color over the old color to carry the old color along until next needed.
5. Cowl can be worked by following written instructions or reading the color chart. Each square on the chart represents one single crochet worked with the indicated color. Read rows of chart beginning at lower edge of chart. Read all rows of the chart from the right to left.

COWL

With **B**, ch 120; taking care not to twist ch, join with slip st in first ch to form a ring.

Round 1: Carry another strand of **B** under the working strand, working in back bumps of beginning ch, sc in same ch as joining slip st and in each ch around; do not join, work in continuous rounds (spiral)—120 sc. Place a marker in last sc made. Move marker up as each round is completed.

Drop the carried strand of **B** and begin carrying a strand of **A**.

Note: In all following rounds, work sc stitches in the back loops only.

Round 2: *With **B**, sc in next st; with **A**, sc in next st; with **B**, sc in next st; with **A**, sc in next 7 sts; repeat from * around—12 pattern repeats.

Drop the strand of **A** and begin carrying a second strand of **B**.

Round 3: With **B**, sc in each st around. Drop the carried strand of **B** and begin carrying a strand of **A**.

Round 4: Repeat Round 2.

Round 5: *With **B**, sc in next st; with **A**, sc in next st; with **B**, sc in next st; with **A**, sc in next 3 sts; with **B**, sc in next st; with **A**, sc in next 3 sts; repeat from * around.

Round 6: *With **B**, sc in next st; with **A**, sc in next st; with **B**, sc in next st; with **A**, sc in next 2 sts; with **B**, sc in next 3 sts; with **A**, sc in next 2 sts; repeat from * around.

Round 7: *[With **B**, sc in next st; with **A**, sc in next st] twice; with **B**, sc in next 5 sts; with **A**, sc in next st; repeat from * around.

Round 8: *With **B**, sc in next st; with **A**, sc in next st; with **B**, sc in next st; with **A**, sc in next 2 sts; with **B**, sc in next st; with **A**, sc in next st; with **B**, sc in next st; with **A**, sc in next 2 sts; repeat from * around.

Rounds 9 and 10: Repeat Rounds 2 and 3.

Rounds 11-21: Repeat Rounds 2-10.

Fasten off, leaving a long tail.

Continued...



2015
WOMEN'S CHOICE AWARD™
AMERICA'S MOST RECOMMENDED
YARN BRAND

SHOP KIT

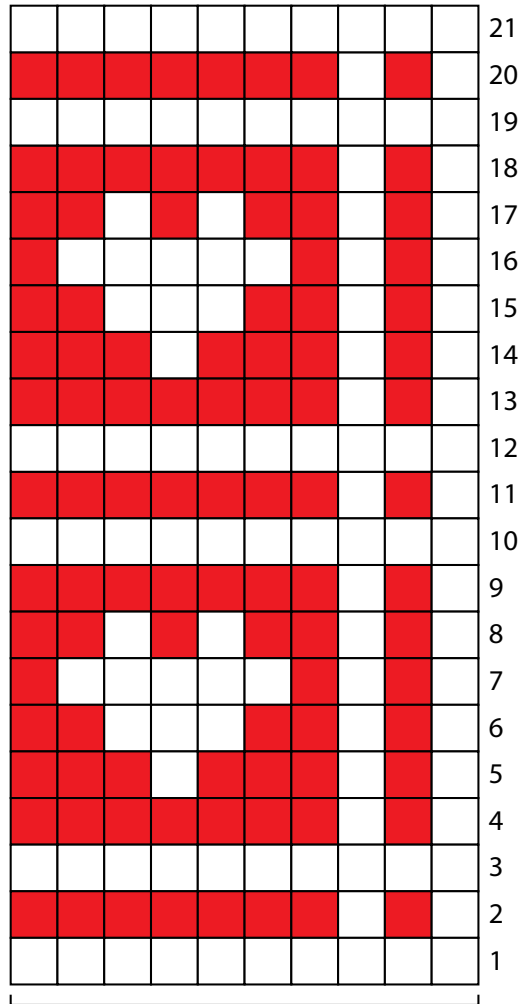


FINISHING

Weave in ends.

ABBREVIATIONS

ch = chain; **sc** = single crochet; **st(s)** = stitch(es); **[]** = work directions in brackets the number of times specified; * = repeat whatever follows the * as indicated.



10-stitch repeat
(repeat for a total of 12 times)

- 9925 Really Red (A)
- 4601 Off White (B)

Note: One square on chart represents one single crochet (sc).