



MATERIALS

Bernat® Softee® Chunky™ (3.5 oz/100 g; 108 yds/99 m)
Taupe Gray (28048) **2 balls**

Set of 4 sizes U.S. 10½ (6.5 mm) and U.S. 11 (8 mm) double-pointed knitting needles **or size needed to obtain gauge.** Cable needle. Stitch marker.

 **KNIT | SKILL LEVEL: INTERMEDIATE**

ABBREVIATIONS

Approx = Approximately

Beg = Beginning

C3B = Slip next stitch onto cable needle and leave at back of work. K2, then K1 from cable needle.

C3F = Slip next 2 stitches onto cable needle and leave at front of work. K1, then K2 from cable needle.

C4B = Slip next 2 stitches onto cable needle and leave at back of work. K2, then K2 from cable needle.

C4F = Slip next 2 stitches onto cable needle and leave at front of work. K2, then K2 from cable needle.

Cont = Continue

K = Knit

K2tog = Knit next 2 stitches together

Kfb = Increase 1 stitch by knitting into front and back of next stitch

Pat = Pattern

P = Purl

P2tog = Purl next 2 stitches together

Rem = Remaining

Rep = Repeat

Rnd(s) = Round(s)

Ssk = Slip next 2 stitches knitwise one at a time. Pass them back onto left-hand needle, then knit through back loops together

St(s) = Stitch(es)

Tog = Together

SIZE

One size to fit average Adult.

GAUGE

11 sts and 14 rows = 4" [10 cm] in stocking st with larger needles.

INSTRUCTIONS

With smaller set of needles, cast on 60 sts. Divide sts on 3 needles and join in rnd, placing a marker on first st.

1st rnd: *K2. P2. Rep from * around.

Rep last rnd (K2. P2) ribbing for 4" [10 cm].

BERNAT® COZY CABLE KNIT HAT | KNIT

Change to larger set of needles and proceed as follows:

Next rnd: *K4. Kfb. Rep from * around. 72 sts.

Proceed in Cable Pat (see chart) as follows:

1st and 2nd rnds: *K8. P4. Rep from * around.

3rd rnd: *C4B. C4F. P4. Rep from * around.

4th rnd: As 1st rnd.

These 4 rnds form Cable Pat.

Cont in Cable Pat until work from beg measures approx 10" [25.5 cm], ending on a 4th rnd.

Shape crown: 1st rnd: *ssk. K4. K2tog. P4. Rep from * around. 60 sts.

2nd rnd: *K6. P4. Rep from * around.

3rd rnd: *C3B. C3F. (P2tog) twice. Rep from * around. 48 sts

4th rnd: *K6. P2. Rep from * around.

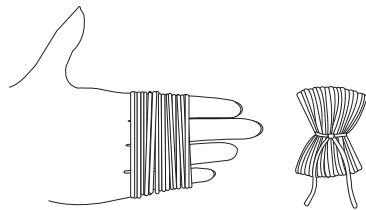
5th rnd: *ssk. K2. K2tog. P2. Rep from * around. 36 sts.

6th rnd: *K4. P2. Rep from * around.

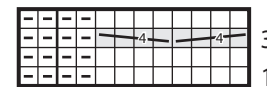
7th rnd: *ssk. K2tog. P2tog. Rep from * around. 18 sts.

Break yarn, leaving a long end. Draw end tightly through rem sts and fasten securely.

Pompom: Wind yarn around 4 fingers approx 80 times. Remove from fingers and tie tightly in center. Cut through each side of loops. Trim to a smooth round shape, approx 4" [10 cm] in diameter. Sew to top of Hat.







Cable Chart



Start here

Key

-  = Knit
-  = Purl
-  = C4B
-  = C4F

