



MATERIALS

Bernat® Blanket™ (10.5 oz/300 g; 220 yds/201 m)

Contrast A Coal (10040)

3 balls or 660 yds/603 m

Contrast B Vintage White (10006)

2 balls or 336 yds/307 m

Sizes U.S. 11 (8 mm) and U.S. 13 (9 mm) circular knitting needles 40" [101.5 cm] long **or size needed to obtain gauge.**



KNIT | SKILL LEVEL: **INTERMEDIATE**

ABBREVIATIONS

Approx = Approximate(ly)

Dec = Decrease(ing)

K = Knit Inc = Increase(ing)

Inc = Increase(ing)

Pat = Pattern

Rep = Repeat

RS = Right side

Sl1Pwyib = Slip next stitch purl-wise with yarn in back

Sl1Pwyif = Slip next stitch purl-wise with yarn in front

St(s) = Stitch(es)

WS = Wrong side

MEASUREMENTS

Approx 48 x 55" [134 x 165 cm].

GAUGES

8 sts and 20 rows = 4" [10 cm] with larger needles in Herringbone Pat.

7 sts and 16 rows = 4" [10 cm] with smaller needles in garter stitch.

INSTRUCTIONS

Note: Carry color not in use loosely up right side of work.

With A and smaller needles, cast on 85 sts. **Do not** join, working back and forth across needle in rows, knit 14 rows (garter stitch), noting first row is WS.

Next row: (WS). K1. *M1. K14. Rep from * to end of row. 91 sts (multiple of 8 sts + 3).

Change to larger needle and proceed in Herringbone Pat as follows:

1st row: (RS). With A, K1. *With A, K2. Sl1Pwyib. K3. (Sl1wyib) twice. Rep from * to last 2 sts. With A, K2.

2nd row: With A, K2. *(Sl1Pwyif) twice. K3. Sl1Pwyif. K2. Rep from * to last st. K1.

3rd row: With B, K1. *(K1. Sl1Pwyib) 3 times. K2. Rep from * to last 2 sts. K2.

4th row: With B, K2. *K2. (Sl1Pwyif. K1) 3 times. Rep from * to last st. K1.

5th row: With A, K1. *Sl1Pwyib. K3. Sl1Pwyib. K2. Sl1Pwyib. Rep from * to last 2 sts. Sl1Pwyib. K1.

BERNAT® MOSAIC HERRINGBONE KNIT THROW | KNIT

6th row: With A, K1. Sl1Pwyif. *Sl1Pwyif. K2. Sl1Pwyif. K3. Sl1wyif. Rep from * to last st. K1.

7th row: With B, K1. *K2. Sl1Pwyib. K3. Sl1Pwyib. K1. Rep from * to last 2 sts. K2.

8th row: With B, K2. *K1. Sl1Pwyif. K3. Sl1Pwyif. K2. Rep from * to last st. K1.

9th row: With A, K1. *Sl1Pwyib. K2. (Sl1Pwyib) twice. K3. Rep from * to last 2 sts. Sl1Pwyib. K1.

10th row: With A, K1. Sl1Pwyif. *K3. (Sl1Pwyif) twice. K2. Sl1Pwyif. Rep from * to last st. K1.

11th row: With B, K1. *K1. Sl1Pwyib. K3. Sl1Pwyib. K1. Sl1Pwyib. Rep from * to last 2 sts. K2.

12th row: With B, K2. *Sl1Pwyif. K1. Sl1Pwyif. K3. Sl1Pwyif. K1. Rep from * to last st. K1.

13th row: With A, K1. *K2. (Sl1Pwyib) twice. K2. Sl1Pwyib. K1. Rep from * to last 2 sts. K2.

14th row: With A, K2. *K1. Sl1Pwyif. K2. (Sl1Pwyif) twice. K2. Rep from * to last st. K1.

15th row: With B, K1. *(Sl1Pwyib. K3) twice. Rep from * to last 2 sts. Sl1Pwyib. K1.

16th row: With B, K1. Sl1Pwyif. *(K3. Sl1Pwyif) twice. Rep from * to last st. K1.

Rep 1st to 16th rows 17 times more. Break B.

Change to smaller needle.

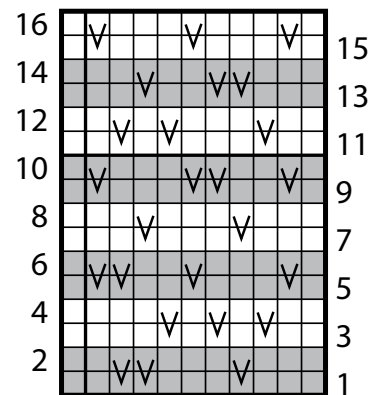
Next row: With A, K1. *K2tog. K13. Rep from * to end of row. 85 sts.

Knit 14 rows (garter st).
Cast off knitwise (WS).

Side borders: (RS). With smaller needle and A, pick up and knit 130 sts evenly up right edge of Blanket.

Knit 14 rows (garter st). Cast off knitwise (WS).

Rep for left edge of Blanket.



Start Here

Key

■ = With A, knit.

∇ = With A, Sl1Pwyib on RS rows, Sl1Pwyif on WS rows.

□ = With B, knit.

∇ = With B, Sl1Pwyib on RS rows, Sl1Pwyif on WS rows.