



SUPER FINE
1
KNIT
SKILL LEVEL: INTERMEDIATE



Katherine Poole-Fournier
Designer

ABBREVIATIONS

Alt = Alternat(e)(ing)
Approx =
Approximately
K = Knit
K2tog = Knit next
2 stitches together

P = Purl
Pat = Pattern
PM = Place marker
Rep = Repeat
RS = Right side
SM = Slip marker

St(s) = Stitch(es)
WS = Wrong side
Yo = Yarn over

MEASUREMENTS

Approx 30" deep x 60" wide
[76 x 152.5 cm].

GAUGE

24 sts and 44 rows = 4" [10 cm] in
garter st.

INSTRUCTIONS

Notes:

- Shawl is worked from center back neck edge down.
- A small Tab piece is knit first with sts picked up around around sides of Tab to create a base for remainder of Shawl.
- Move marker beside center st up every row as work progresses.

Tab: With A, cast on 3 sts.
Knit 5 rows.

Next row: Knit to end of row. Turn work 90 degrees. Pick up and knit 3 sts along garter tab edge (1 st picked up per garter ridge). Pick up and knit 3 sts across tab cast on edge. 9 sts.

1st row: (RS) K3. yo. K1. yo. PM. K1. yo. K1. yo. K3. 13 sts.

2nd row: Knit.

3rd row: K3. yo. Knit to marker. yo. SM. K1. yo. Knit to last 3 sts. yo. K3. 17 sts.

4th row: Knit.

Rep 3rd and 4th rows until you have 117 sts, ending on a WS row. Break A. Join B.

MATERIALS

Patons® Kroy FX™ (1.75 oz/50 g; 166 yds/152 m)

Contrast A Mossy Colors (57705) **3 balls**

Contrast B Seashell Colors (57703) **3 balls**

Size U.S. 5 (3.75 mm) circular knitting needle 29" [73.5 cm] long or size needed to obtain gauge. Stitch marker. Yarn needle.

Proceed in Old Shale Pat as follows (see Chart on page 3):

1st row: (RS). With B, K3. yo. *(K2tog) 3 times. (K1. yo) 6 times. (K2tog) 3 times. Rep from * to 1 st before marker. K1. yo. SM. K1. yo. K1. **(K2tog) 3 times. (yo. K1) 6 times. (K2tog) 3 times. Rep from ** to last 3 sts. yo. K3. 121 sts.

2nd and alt rows (unless otherwise indicated): K3. Purl to last 3 sts. K3.

3rd row: K3. yo. Knit to 1 st before marker. yo. SM. K1. yo. Knit to last 3 sts. yo. K3. 125 sts.

5th row: K3. yo. K2. *(K2tog) 3 times. (K1. yo) 6 times. (K2tog) 3 times. Rep from * to 3 sts before marker. K3. yo. SM. K1. yo. K3. **(K2tog) 3 times. (yo. K1) 6 times. (K2tog) 3 times. Rep from ** to last 5 sts. K2. yo. K3. 129 sts.

7th row: As 3rd row. 133 sts.

9th row: K3. yo. K4. *(K2tog) 3 times. (K1. yo) 6 times. (K2tog) 3 times. Rep from * to 5 sts before marker. K5. yo. SM. K1. yo. K5. **(K2tog) 3 times. (yo. K1) 6 times. (K2tog) 3 times. Rep from ** to last 7 sts. K4. yo. K3. 137 sts.

10th row: As 2nd row. Break B. Join A.

11th row: With A, as 3rd row. 141 sts.

12th row: Knit.

13th to 16th rows: Rep 11th and 12th rows twice more. 149 sts.

17th row: As 11th row. 153 sts.

18th and alt rows: As 2nd row. Break A. Join B.

19th row: With B, K3. yo. (K1. yo) 3 times. (K2tog) 6 times. *(K1. yo) 6 times. (K2tog) 6 times. Rep from * to 4 sts before marker. (K1. yo) 4 times. SM. K1. (yo. K1) 4 times. (K2tog) 6 times. **(yo. K1) 6 times. (K2tog) 6 times. Rep from * to last 6 sts. (yo. K1) 4 times. K2. 157 sts.

21st row: As 3rd row. 161 sts.

23rd row: K3. yo. K3. (yo. K1) twice. yo. (K2tog) 6 times. *(K1. yo) 6 times. (K2tog) 6 times. Rep from * to 6 sts before marker. (K1. yo) 3 times. K3. yo. SM. K1. yo. K3. (yo. K1) 3 times. (K2tog) 6 times. **(yo. K1) 6 times. (K2tog) 6 times. Rep from ** to last 8 sts. (yo. K1) 3 times. K2. yo. K3. 165 sts.

25th row: As 3rd row. 169 sts.

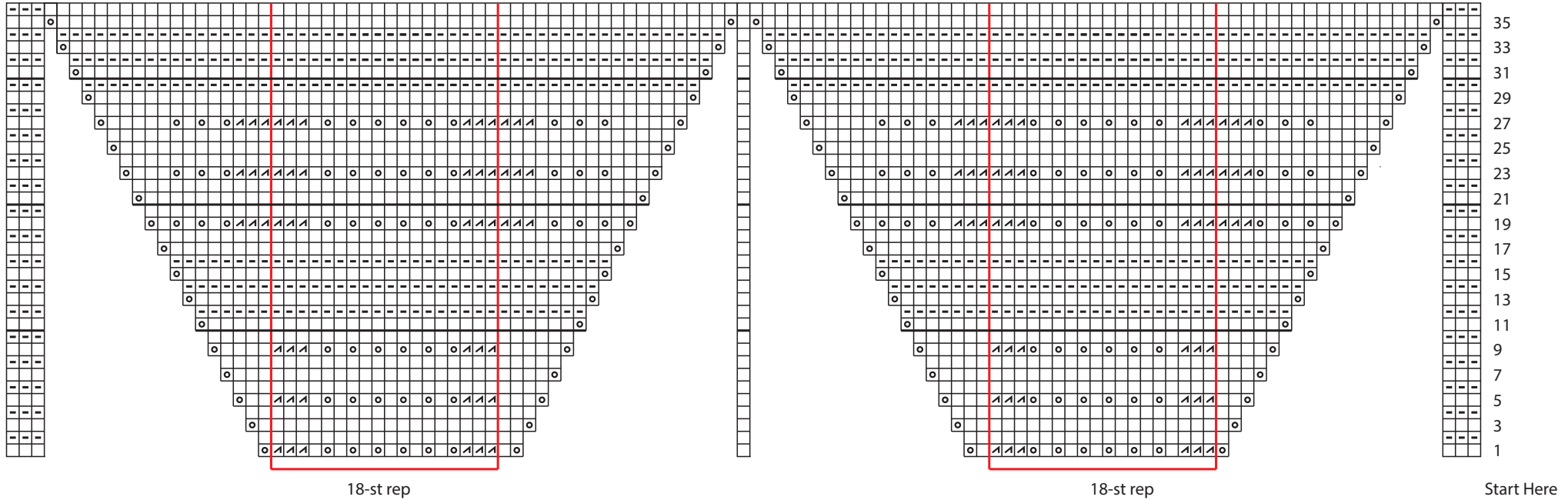
27th row: K3. yo. K5. (yo. K1) twice. yo. (K2tog) 6 times. *(K1. yo) 6 times. (K2tog) 6 times. Rep from * to 8 sts before marker. (K1. yo) 3 times. K5. yo. SM. K1. yo. K5. (yo. K1) 3 times. (K2tog) 6 times. **(yo. K1) 6 times. (K2tog) 6 times. Rep from ** to last 10 sts. (yo. K1) 3 times. K4. yo. K3. 173 sts. Break B. Join A.

29th to 36th rows: Work as 11th to 18th rows. 189 sts. These 36 rows form Old Shale Pat.

Rep Old Shale Pat 3 times more. 405 sts. Cast off loosely knitwise with B.



CHART



Key

- = Knit on RS rows. Purl on WS rows.
- ◻ = Knit on WS rows. Purl on RS rows.
- ⊙ = yo
- ▣ = K2tog