



Katherine Poole-Fournier
Designer



KNIT | SKILL LEVEL: INTERMEDIATE

ABBREVIATIONS

Beg = Beginning

Cont = Continue(ity)

K = Knit

Inc = Increase

K2tog = Knit next 2 stitches together

M1 = Make 1 stitch by picking up horizontal loop lying before next stitch and knitting into back of loop

PM = Place marker

P = Purl

Rep = Repeat

Rnd(s) = Round(s)

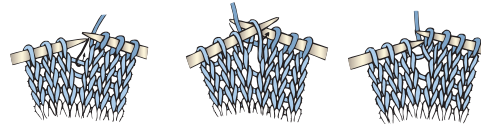
Ssk = Slip next 2 stitches one at a time. Pass them back onto left-hand needle, then knit through the back loops together.

St(s) = Stitch(es)

Tog = Together

W&T = Bring yarn to front of work. Slip next stitch purlwise. Bring yarn to back of work. Slip stitch back onto left-hand needle. Turn.

WS = Wrong side



Pat = Pattern

MATERIALS

Patons® Classic Wool Worsted™ (3.5 oz/100 g; 194 yds/177 m)

Sizes	XS/S/M	L/XL/2XL	3/4/5XL	
Main Color (MC) Heath Heather (77215)	5	7	9	balls
Contrast A Navy Blue (77773)	1	1	1	ball
Contrast B Scarlet (77746)	1	1	1	ball
Contrast C Aran (000202)	1	1	1	ball
Contrast D Brown Mustard (77757)	1	1	1	ball
Contrast E Desert (77752)	1	1	1	ball

Sizes U.S. 6 (4 mm) and U.S. 7 (4.5 mm) circular knitting needles 16" [40.5 cm] and 36" [91.5 cm] long. Set of 4 sizes U.S. 6 (4 mm) and U.S. 7 (4.5 mm) double-pointed knitting needles **or size needed to obtain gauge**. 4 stitch holders. 2 stitch markers. Scrap yarn for cast on.

SIZES

To fit bust measurement

XS/S/M 28-38" [71-96.5 cm]

L/XL/2XL 40-48" [101.5-122 cm]

3/4/5XL 54-62" [137-157.5 cm]

Finished bust measurement

XS/S/M 53" [134.5 cm]

L/XL/2XL 59" [150 cm]

3/4/5XL 64" [162.5 cm]

GAUGE

20 sts and 26 rows = 4" [10 cm] in stocking st with larger needles.

INSTRUCTIONS

The instructions are written for smallest size. If changes are necessary for larger size(s) the instructions will be written thus (). Numbers for each size are shown in the same color throughout the pattern. When only one number is given in black, it applies to all sizes.

Note: When working from charts, carry yarn not in use loosely across WS of work but never over more than 5 sts. When it must pass over more than 5 sts, weave it over and under color in use on next st or at center point of sts it

passes over. The colors are never twisted around one another.

Collar

Using a provisional cast on and scrap yarn, with smaller 16" [40.5 cm] long circular needle cast on **96** (100-104) sts, PM on first st.

With MC, proceed as follows:

1st rnd: *K2. P2. Rep from * around.

Rep 1st rnd for 2½" [6.5 cm].

Fold Collar inwards and line up provisional cast on edge sts with live sts on needles.

Next rnd: Remove waste yarn from provisional cast on to expose 1 live st. Knit this st tog with first st on left needle. *Remove waste yarn from provisional cast on to expose 1 live st. Knit this st tog with next st on left needle. Rep from * around.

Next rnd: Knit.

Short-row neckline shaping:

Note: When working wrapped sts, pick up 'wrap', place it onto left-hand needle and work next st tog with 'wrap' for each wrapped st – this will prevent holes or gaps in your work.

1st row: K6. W&T.

2nd row: P12. W&T.

3rd row: K18. W&T.

4th row: P24. W&T.

5th row: K30. W&T.

6th row: P36. W&T.

7th row: K42. W&T.

8th row: P48. W&T.

9th row: K54. W&T.

10th row: P60. W&T.

Next row: K30.

Change to larger 16" [40.5 cm] circular needle.

Note: Change to longer needle when necessary during shaping.

Inc rnd: *K2. M1. Rep from * around. **144** (150-156) sts.

Begin colorwork:

Work Chart I to end of chart reading rows from **right** to left and noting 6-st rep will be worked **24** (25-26) times. Charts are shown on page 4.

Next rnd: With MC, knit.

Inc rnd: *M1. K6. Rep from * around. **168** (175-182) sts.

Next rnd: Knit.

Work Chart II to end of chart reading rows from **right** to left, noting chart will be repeated **24** (25-26) times. **192** (200-208) sts.

Work Chart III to end of chart reading rows from **right** to left, noting chart will be repeated **24** (25-26) times. **240** (250-260) sts.

Next rnd: With MC, knit.

Inc rnd: *K5. M1. Rep from * around. **288** (300-312) sts.

Next rnd: Knit.

Work Chart IV to end of chart reading rows from **right** to left, noting 6-st rep will be worked **48** (50-52) times.

With MC, knit 3 rnds even.

Work Chart V to end of chart reading rows from **right** to left, noting 12-st rep will be worked **24** (25-26) times.

Size XS/S/M only: Next rnd: With MC, knit.

Inc rnd: *K6. M1. Rep from * around. **336** sts.

Next rnd: Knit.

Size L/XL/2XL only: Next rnd: With MC, knit.
Inc rnd: *K5. M1. Rep from * around. **360** sts.
Next rnd: Knit.

Size 3/4/5XL only: Inc rnd: With MC, *K39. M1. Rep from * around. **320** sts.
Inc rnd: *K5. M1. Rep from * around. **384** sts.
Next rnd: Knit.

All sizes: Work Chart I to end of chart reading rows from **right** to left, noting 6-st rep will be worked **56 (60-64)** times.

Size XS/S/M only: With MC, knit 3 rnds even.

Size L/XL/2XL only: Next rnd: With MC, knit.
Inc rnd: (K90. M1) 4 times. **364** sts.
Next rnd: Knit.

Size 3/4/5XL only: Next rnd: With MC, knit.
Inc rnd: *K48. M1. Rep from * around. **392** sts.
Next rnd: Knit.

All sizes: Work Chart VI to end of chart reading rows from **right** to left, noting 14-st rep will be worked **24 (26-28)** times.

Size XS/S/M only: With MC, knit 3 rnds even.

Size L/XL/2XL only: Next rnd: With MC, knit.
Inc rnd: (K182. M1) twice. **366** sts.
Next rnd: Knit.

Size 3/4/5XL only: Next rnd: With MC, knit.
Inc rnd: (K98. M1) 4 times. **396** sts.
Next rnd: Knit.

All sizes: Work Chart VII to end of chart reading rows from **right** to left, noting 6-st rep will be worked **56 (61-66)** times.

With MC, knit even in rnds until work from folded edge of Collar measures **16 (18-20)" [40.5 (45.5-51) cm]**.

Divide for sleeves: 1st rnd: K**62 (68-72)**. Place next **44 (48-54)** sts onto st holder. Cast on **8 (12-16)** sts. K**124 (135-144)**. Place next **44**

(48-54) sts onto st holder. Cast on **8 (12-16)** sts. Knit to end of rnd. **264 (294-320)** Body sts.

Knit even in rnds until work from divide measures **7 (8-9)" [18 (20.5-23) cm]**.

Size L/XL/2XL only: Next rnd: (K145. K2tog) twice. **292** sts.

All sizes: Change to smaller 36" [91.5 cm] circular needle.

Next rnd: *K2. P2. Rep from * around.
 Rep last rnd of (K2. P2) ribbing until Body from divide measures **8½ (9½-10½)" [21.5 (24-26.5) cm]**.
 Cast off in ribbing.

SLEEVES

With set of 4 larger double-pointed needles, beg at center of underarm, pick up and knit **4 (6-8)** sts. K**44 (48-54)** from st holder. Pick up and knit **4 (6-8)** sts across rem of underarm cast on edge. **52 (60-70)** sts. Divide sts onto 3 needles. Join in rnd. PM on first st.

Knit in rnds until Sleeve measures **5 (3-2)" [12.5 (7.5-5) cm]**.

Sleeve decreases:

1st rnd: K1. K2tog. Knit to last 3 sts. ssk, K1. **50 (58-68)** sts.
2nd to 4th rnds: Knit.
 Rep last 4 rnds **1 (3-6)** time(s) more. **48 (52-56)** sts.

Knit even in rnds until Sleeve measures **7 (6½-6)" [18 (16.5-15) cm]**.

Change to set of smaller double-pointed needles and proceed as follows:

1st rnd: *K2. P2. Rep from * around.
 Rep last rnd of (K2. P2) ribbing until Sleeve measures **9 (8½-8)" [23 (21.5-20.5) cm]**. Cast off in ribbing.



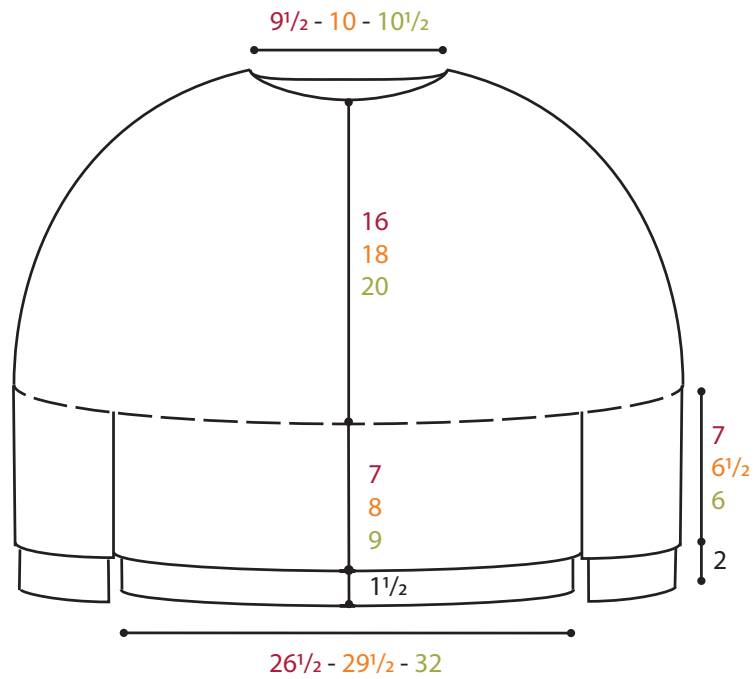


Chart I

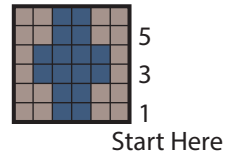


Chart II

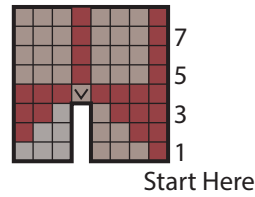


Chart III

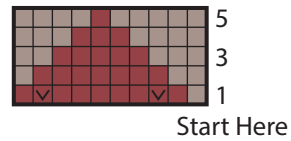


Chart IV

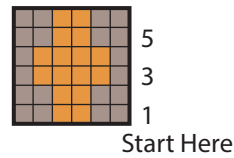


Chart V

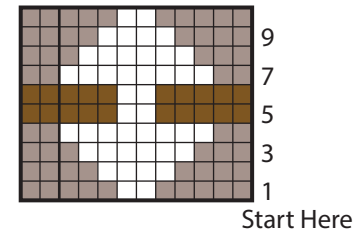


Chart VI

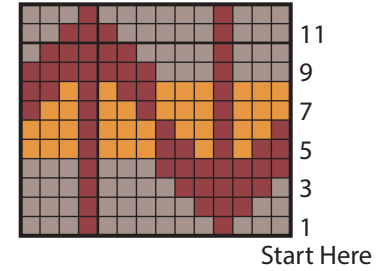
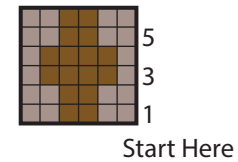


Chart VII



Key

- = M1
- = MC
- = A
- = B
- = C
- = D
- = E