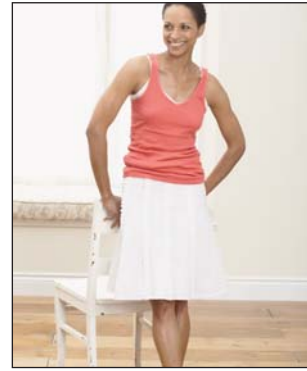


Patons® Grace



VERTICAL EDGING FOR SKIRT (TO CROCHET)

MATERIALS

Patons® Grace (50 g / 1.75 oz)
Vertical Saw Tooth Edging
61005 (Snow) **1 ball** makes
approx 120 ins [3 m].

Size 3.75 mm (U.S. F or 5) crochet
hook **or size needed to obtain
tension.**

TENSION

24 sc and 26 rows = 4 ins [10 cm].

STITCH GLOSSARY

Beg = Beginning.

Ch = Chain.

Dc = Double crochet.

Hdc = Half-double crochet.

Rep = Repeat.

RS = Right side.

Sc = Single crochet.

Sl st = Slip stitch.

Sp(s) = Space(s).

INSTRUCTIONS

Note: Edging is reversible.

Ch 7.

Foundation row: 1 sc in 2nd ch
from hook. 1 hdc in next ch. 1 dc
in next ch. Ch 1. Miss next ch.
1 dc in each of last 2 ch. Turn.

1st row: Ch 1. 1 sc in each of
next 2 dc. 1 sc in next ch-1 sp.
Ch 4. Turn.

2nd row: 1 sc in 2nd ch from
hook. 1 hdc in next ch. 1 dc in
next ch. Ch 1. Miss next sc. 1 dc in
each of next 2 sc. Turn.

Rep last 2 rows until work from
beg measures length required to fit
up length of skirt as shown in
picture. Fasten off. Make more
lengths as desired in the same
manner.

Sew edging lengths to skirt.

Note: Our sample shows 5 lengths
of edging down front seams of
Skirt.



ABBREVIATIONS: www.patonsyarns.com/glossary

Patons®

... a part of your life.

P.O. Box 40 Listowel ON N4W 3H3