



KNIT | SKILL LEVEL: INTERMEDIATE

## ABBREVIATIONS

**Approx** = Approximately

**Beg** = Begin(ning)

**Cont** = Continue(ity)

**Dec** = Decrease(ing)

**Inc** = Increase(ing)

**K** = Knit

**K2tog** = Knit next 2 stitches together

**P** = Purl

**P2tog** = Purl next 2 stitches together

**P2togtbl** = Purl next 2 stitches together through back loops

**Rem** = Remain(ing)

**Rep** = Repeat

**RS** = Right side

**Ssk** = Slip next 2 stitches knitwise one at a time. Pass them back onto left-hand needle, then knit through back loops together

**St(s)** = Stitch(es)

**WS** = Wrong side

## SIZES

To fit bust measurement

**XS/S** 28-34" [71-86.5 cm]

**M** 36-38" [91.5-96.5 cm]

**L** 40-42" [101.5-106.5 cm]

**XL** 44-46" [112-117 cm]

**2/3XL** 48-54" [122-137 cm]

**4/5XL** 56-62" [142-157.5 cm]

## GAUGE

17 sts and 24 rows = 4" [10 cm] with larger needles in stocking st.

## INSTRUCTIONS

The instructions are written for smallest size. If changes are necessary for larger sizes the instructions will be written thus(). When only one number is given, it applies to all sizes. For ease in working, circle all numbers pertaining to your size.

**Note:** When working from chart, wind small balls of colors to be used, one for each separate area

## MATERIALS

**Bernat® Super Value™** (7 oz/197 g; 426 yds/389 m)

**Sizes** XS/S M L XL 2/3XL 4/5XL

**Main Color (MC)**

Dark Gray (53042) 2 2 2 3 3 3 balls

**Contrast A** Baby Pink (07438) 1 1 1 1 1 1 ball

**Contrast B** White (07391) 1 1 1 1 1 1 ball

Sizes U.S. 8 (5 mm) and U.S. 9 (5.5 mm) knitting needles or size needed to obtain gauge. 4 st holders.

## Finished bust

**XS/S** 37" [94 cm]

**M** 41" [104 cm]

**L** 44½" [113 cm]

**XL** 49½" [125.5 cm]

**2/3XL** 58" [147.5 cm]

**4/5XL** 66" [167.5 cm]

of color in the design. Start new colors at appropriate points. To change colors, twist the two colors around each other where they meet on WS to avoid a hole.

### BACK

\*\*With smaller needles and B, cast on **73** (83-88-103-118-138) sts.

Break B.

**1st row:** (RS). With MC, K3. \*P2. K3. Rep from \* to end of row.

**2nd row:** P3. \*K2. P3. Rep from \* to end of row.

Rep last 2 rows of (K3. P2) ribbing for 5" [12.5 cm], ending with a 2nd row and **0** (dec 2-inc 1-dec 2-inc 1-dec 1) st(s) across last row. **73** (81-89-101-119-137) sts.

Change to larger needles and proceed in stocking st, inc 1 st each end of needle on next and every following 10th row **2** (2-2-1-1-1) time(s) more. **79** (87-95-105-123-141) sts.

Cont even until work from beg measures **11½** (11½-12½-14½-16½-18)" [**29** (29-32-37-42-45.5) cm] ending on a purl row.

**Shape raglans:** Cast off **6** (8-9-11-16-18) sts beg of next 2 rows. **67** (71-77-83-91-105) sts.

Work 2 rows even.

**Next row:** (RS). K2. K2tog. Knit to last 4 sts. ssk. K2.

Work 3 rows even.

Rep last 4 rows **3** (3-2-3-2-0) times more. **59** (63-71-75-85-103) sts.

**Next row:** (RS). K2. K2tog. Knit to last 4 sts. ssk. K2.

**Next row:** Purl.

Rep last 2 rows **13** (15-18-18-23-30) times more. **31** (31-33-37-37-41) sts.

Leave rem sts on a st holder.

### FRONT

Work from \*\* to \*\* as given for Back.

Cont even until work from beg measures 2 rows less than Back before raglan shaping, ending on a purl row.

**Chart placement: Next row:** (RS). K**19** (23-27-32-41-50). Knit 1st row of Chart, *reading row from right to left*. K**19** (23-27-32-41-50).

**Next row:** P**19** (23-27-32-41-50). Purl 2nd row of Chart, *reading row from left to right*. P**19** (23-27-32-41-50).

See chart on page 4.

Cont in Chart to end of chart as follows:

**Shape raglans:** Cast off **6** (8-9-11-16-18) sts beg of next 2 rows. **67** (71-77-83-91-105) sts.

Pat 2 rows even.

**Next row:** (RS). K2. K2tog. Pat to last 4 sts. ssk. K2.

Pat 3 rows even.

Rep last 4 rows **3** (3-2-3-2-0) times more. **59** (63-71-75-85-103) sts.

**Next row:** (RS). K2. K2tog. Pat to last 4 sts. ssk. K2.

**Next row:** Purl.

Rep last 2 rows **3** (5-8-7-12-17) times more. **51** (51-33-59-59-67) sts.

**Shape neck: 1st row:** With MC, K2. K2tog. K**16** (16-16-17-17-17).

**Turn.** Leave rem sts on a spare needle.

**2nd row:** P2tog. Purl to end of row.

**3rd row:** K2. K2tog. Knit to last 2 sts. K2tog.

**4th row:** As 2nd row.

**5th row:** As 3rd row.

**6th row:** Purl.

Rep last 2 rows 4 times more. **5** (5-5-6-6-6) sts.

Dec 1 st at raglan edge only on next and every following alt row to 2 sts.

**Next row:** P2tog. Fasten off.

With RS of work facing, slip next **11** (11-13-17-17-25) sts onto a st holder. Join MC to rem sts and knit to last 4 sts. ssk. K2.

**2nd row:** Purl to last 2 sts. P2togtbl.

**3rd row:** ssk. Knit to last 4 sts. ssk. K2.

**4th row:** As 2nd row.

**5th row:** As 3rd row.

**6th row:** Purl.

Rep last 2 rows 4 times more. **5** (5-5-6-6-6) sts.

Dec 1 st at raglan edge only on next and every following alt row to 2 sts.

**Next row:** P2togtbl. Fasten off.

### SLEEVES

With smaller needles and B, cast on **43** (43-43-48-48-53) sts. Break B.

**1st row:** (RS). With MC, K3. \*P2. K3. Rep from \* to end of row.

**2nd row:** P3. \*K2. P3. Rep from \* to end of row.

Rep last 2 rows of (K3. P2) ribbing for 7" [18 cm], ending on a 2nd row and inc **2** (**2-2-3-3-2**) sts evenly across last row. **45** (**45-45-51-51-55**) sts.

Change to larger needles and proceed in stocking st, inc 1 st each end of needle on next and every following **10th** (**6th-6th-6th-4th-2nd**) row to **53** (**57-65-71-81-61**) sts, then every following **12th** (**10th-6th-0-0-4th**) row to **57** (**63-67-71-81-87**) sts.

Cont even until work from beg measures **17½** (**18-18-17½-17-16½**)" [**44.5** (**45.5-45.5-44.5-43-42**) cm], ending on a purl row.

**Shape raglans:** Cast off **6** (**8-9-11-16-18**) sts beg of next 2 rows. **45** (**47-49-49-49-51**) sts.

Work 2 rows even.

**Next row:** (RS). K2. K2tog. Knit to last 4 sts. ssk. K2.

Work 3 rows even.

Rep last 4 rows **3** (**4-4-7-10-12**) times more **37** (**37-39-33-27-25**) sts.

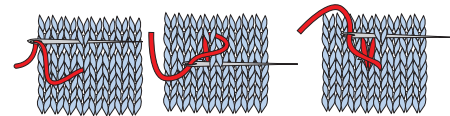
**Next row:** (RS). K2. K2tog. Knit to last 4 sts. ssk. K2.

**Next row:** Purl.

Rep last 2 rows **14** (**14-15-11-8-7**) times more. **7** (**7-7-9-9-9**) sts. Leave rem sts on a st holder.

### FINISHING

Pin garment pieces to measurements. Cover with a damp cloth, leaving cloth to dry. Duplicate st on Front as shown on Chart.



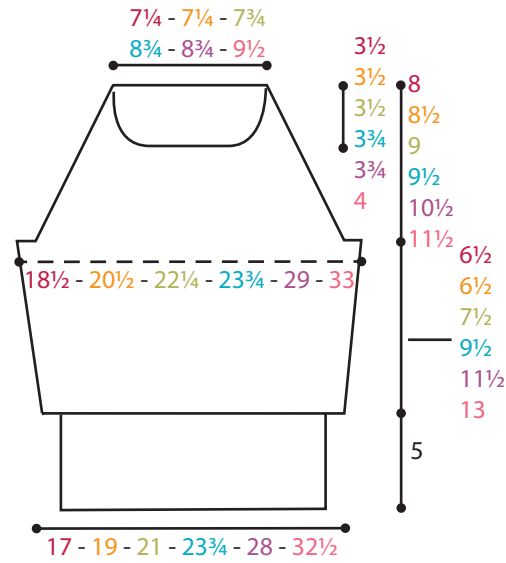
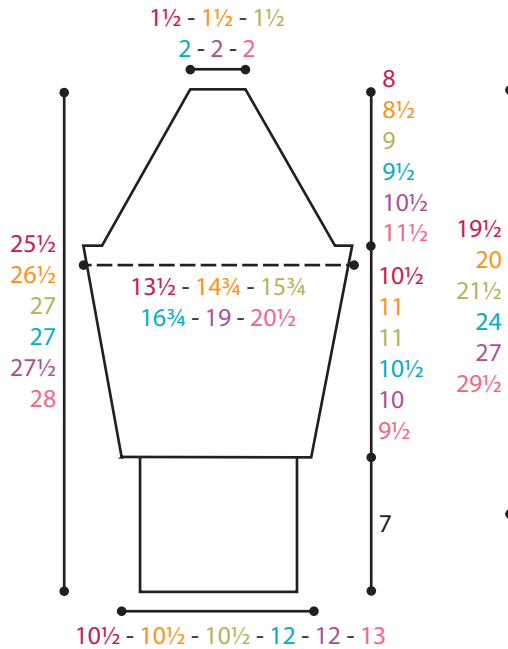
**Collar:** Sew raglan seams, leaving back left raglan open.

With RS of work facing, smaller needles and MC, K7 (**7-7-9-9-9**) from left sleeve st holder. Pick up and knit **15** (**15-15-15-17-19**) sts down left front neck edge. K11 (**11-13-17-17-25**) from front st holder, inc **1** (**1-1-1-1-0**) st(s) at center. Pick up and knit **15** (**15-15-15-17-19**) sts up right front neck edge. K7 (**7-7-9-9-9**) from right sleeve st holder. K31 (**31-33-37-37-41**) from back st holder, inc **1** (**1-2-0-1-1**) st(s) evenly across. **88** (**88-93-103-108-123**) sts.

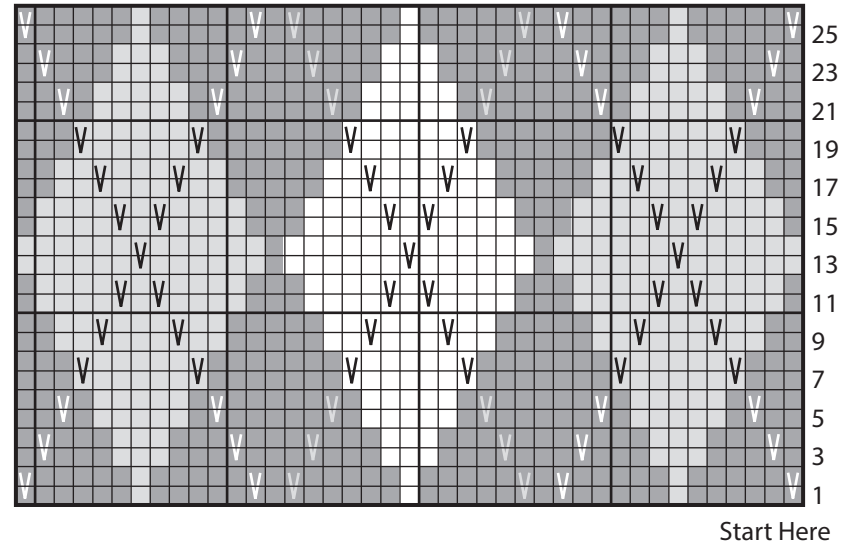
Beg with a 2nd row, work in (K3. P2) ribbing as given for Back for 3" [7.5 cm]. With B, work 1 row. Cast off in ribbing.

Sew left back raglan and collar seam. Sew side and sleeve seams.

## BERNAT® ARGYLE SWEATER | KNIT



Chart



### Key

- = MC
- = Contrast A
- = Contrast B
- ▤ = Duplicate st with MC
- ▥ = Duplicate st with A
- ▦ = Duplicate st with B